



MINNESOTA
TOWARD **ZERO** DEATHS

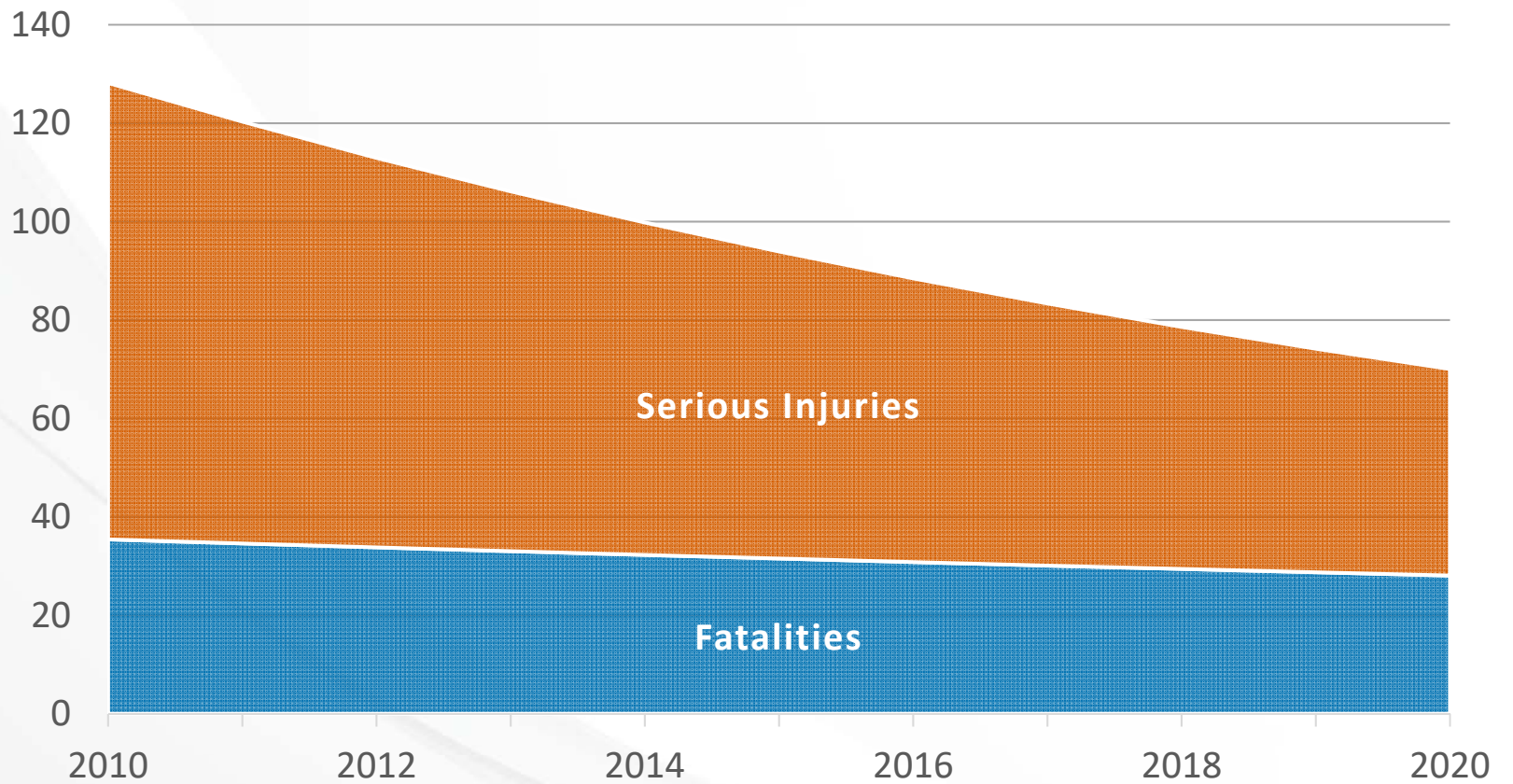
Southwest Minnesota Regional Crash Data

*Sgt. Troy Christianson,
Minnesota State Patrol*

April 21, 2017

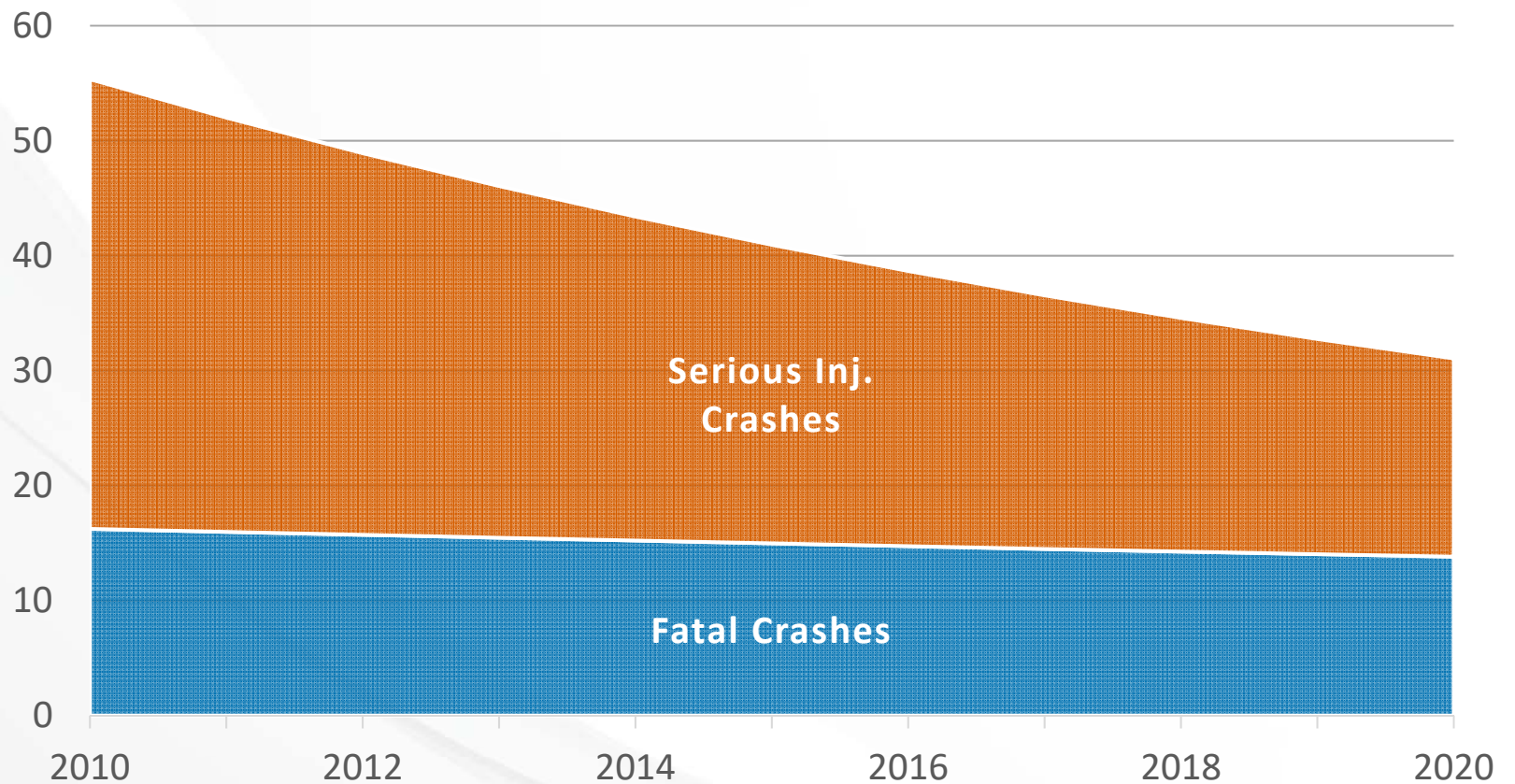
Safety Trends

Southwest Region, 2010-2016



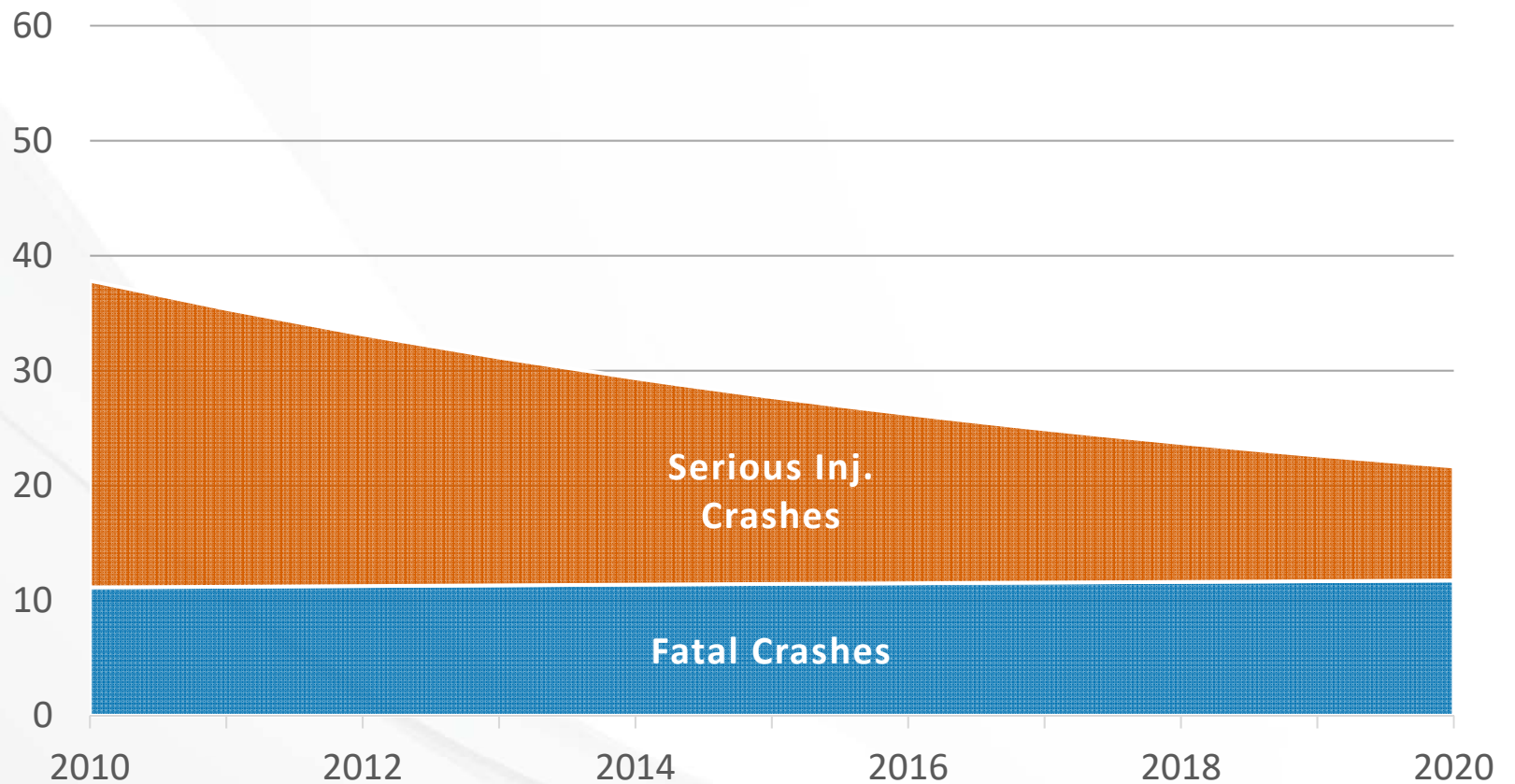
Lane Departure Crash Trends

Southwest Region, 2010-2016



Intersection Crash Trends

Southwest Region, 2010-2016

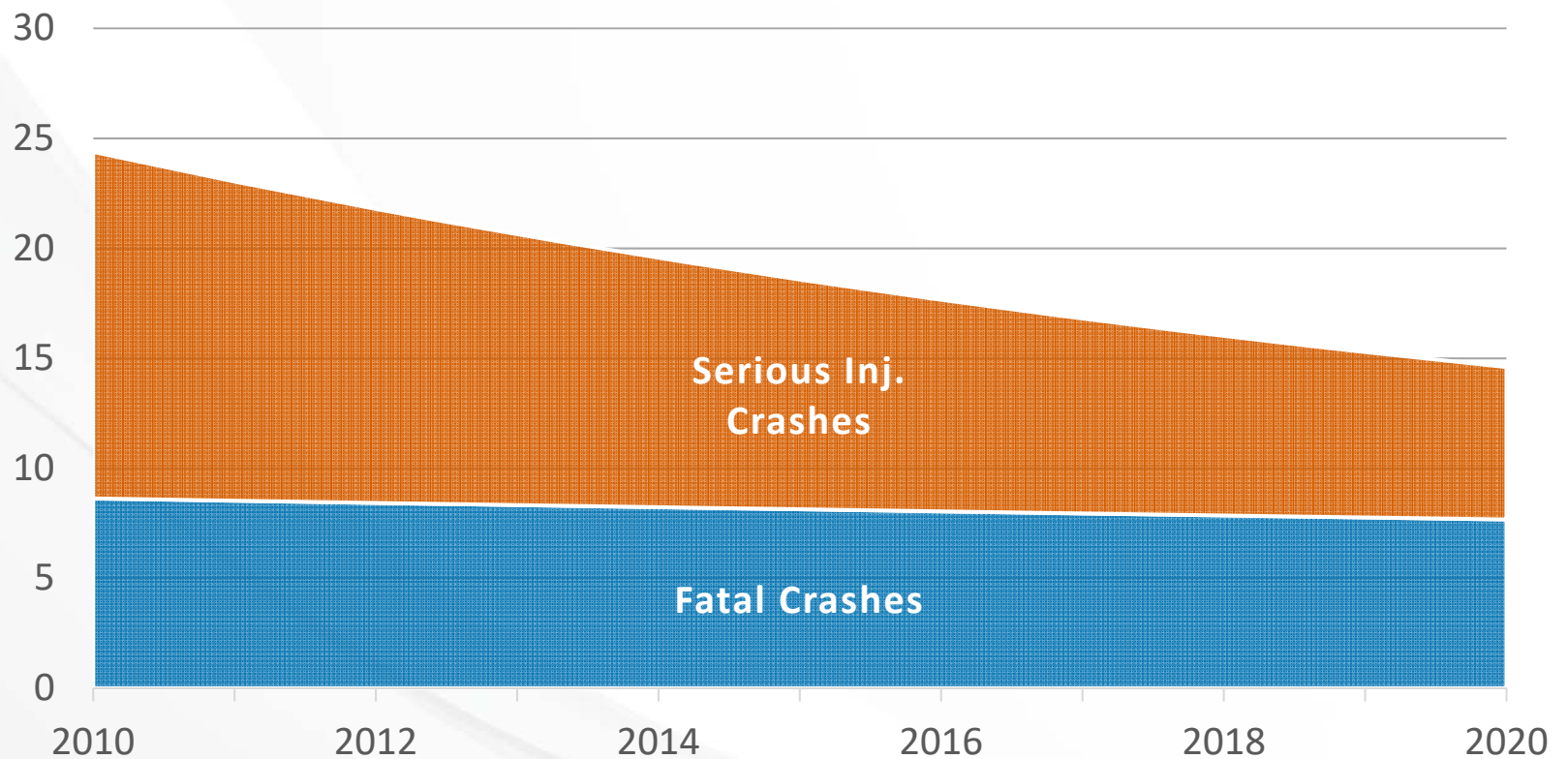






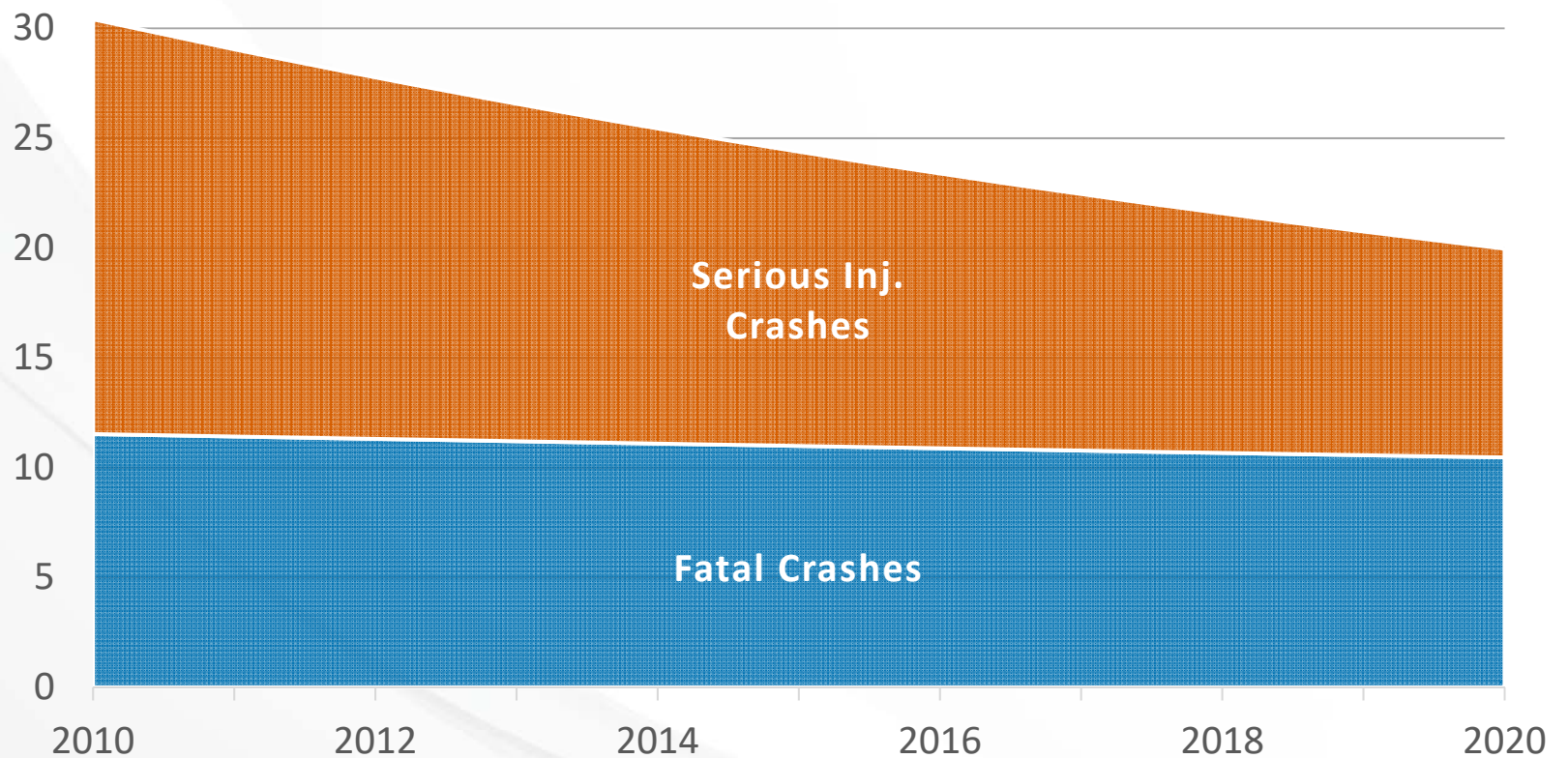
Alcohol-Related Crash Trends

Southwest Region, 2010-2016



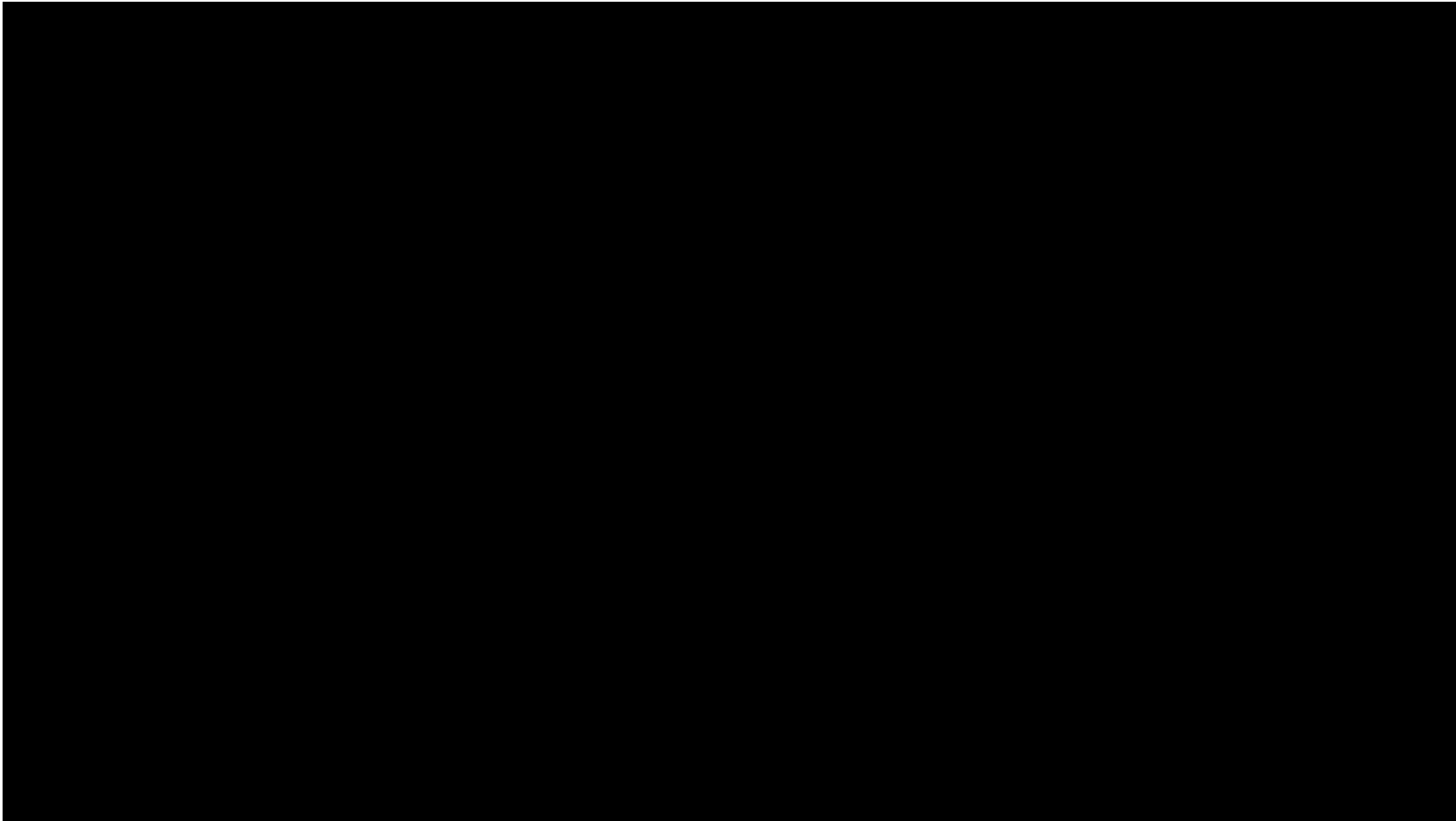
Unbelted Crash Trends

Southwest Region, 2010-2016



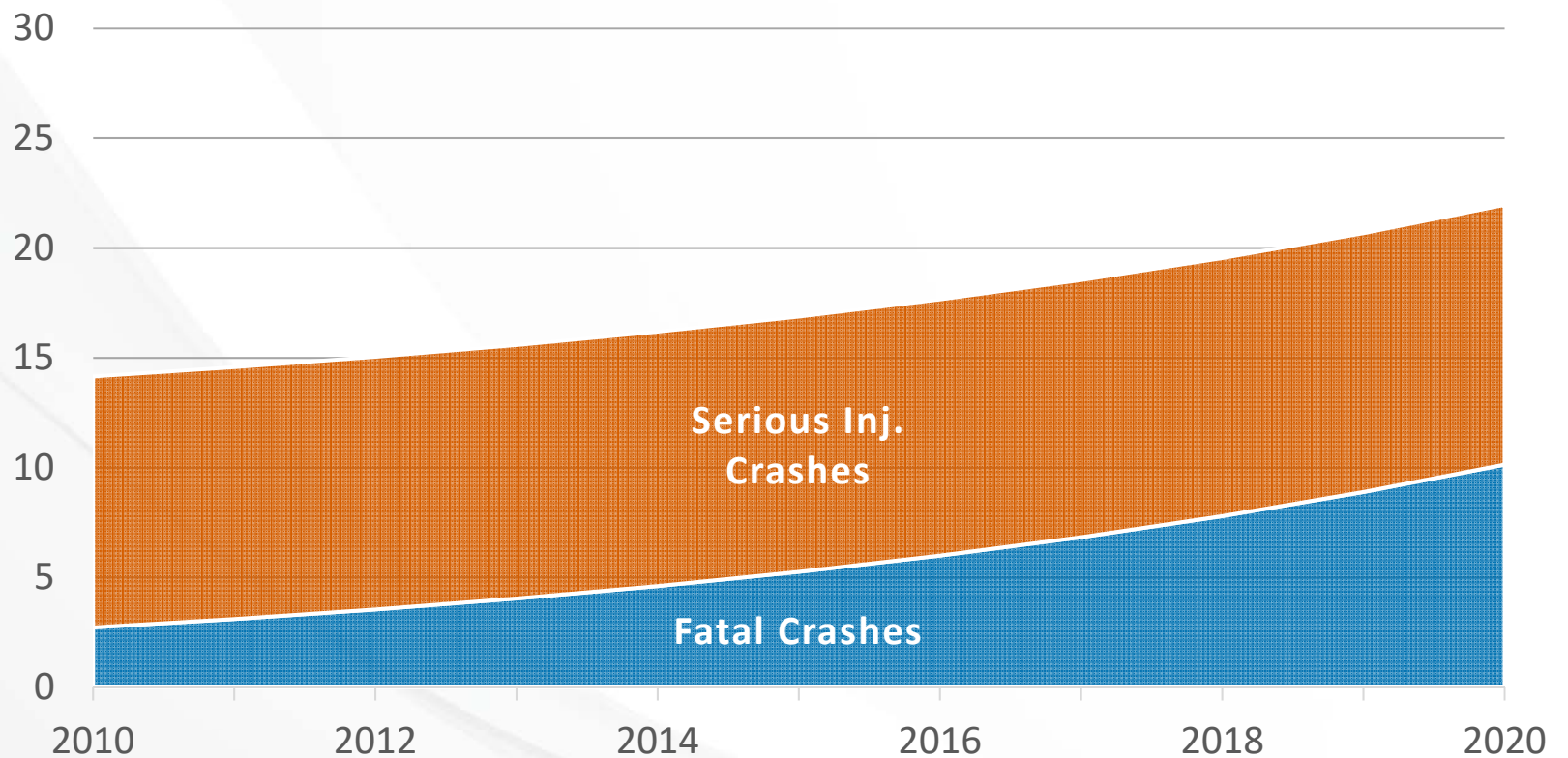
August 3, 2015
10:30 p.m.





Speed-Related Crash Trends

Southwest Region, 2010-2016

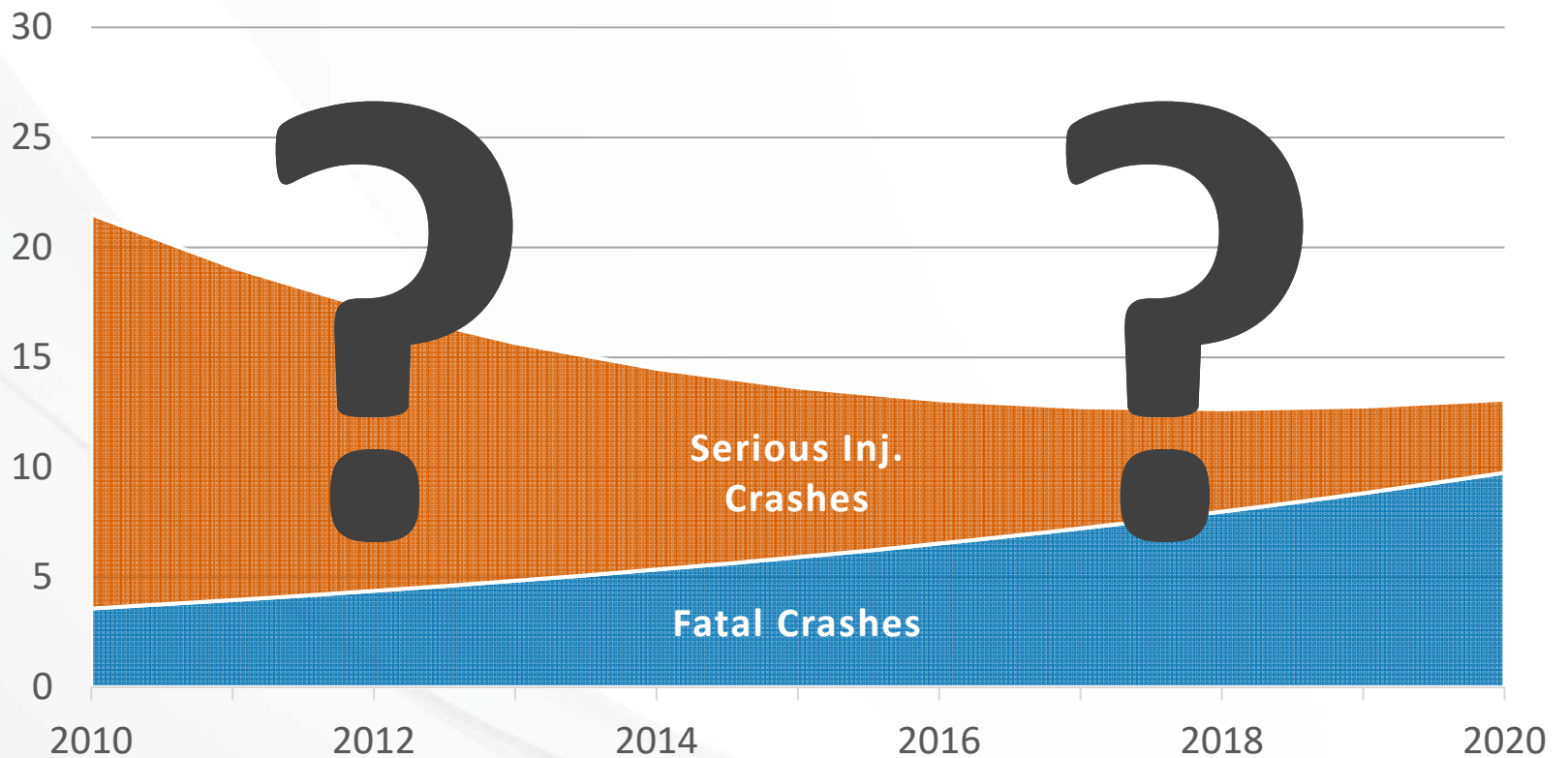






Distraction-Related Crash Trends

Southwest Region, 2010-2016

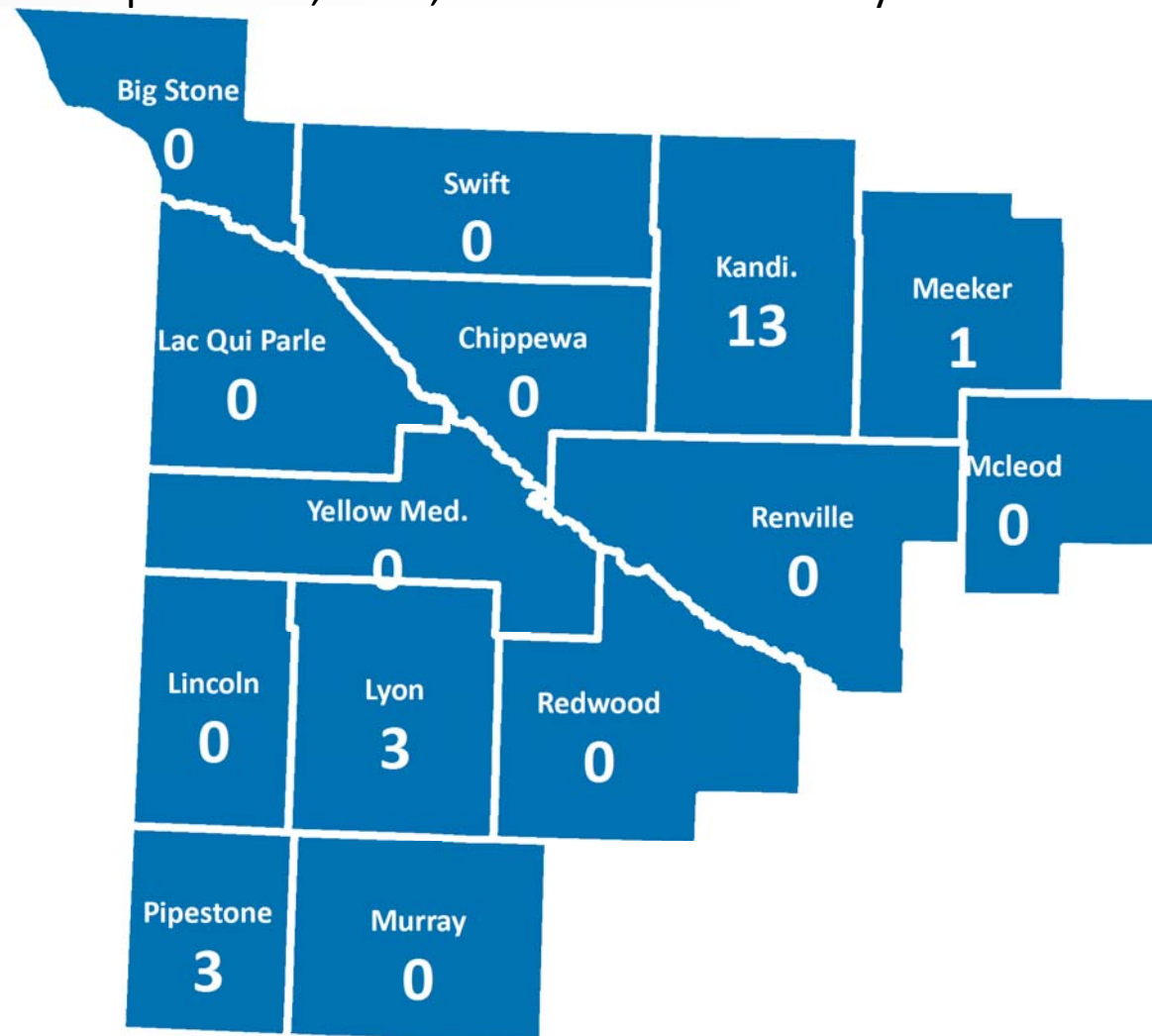






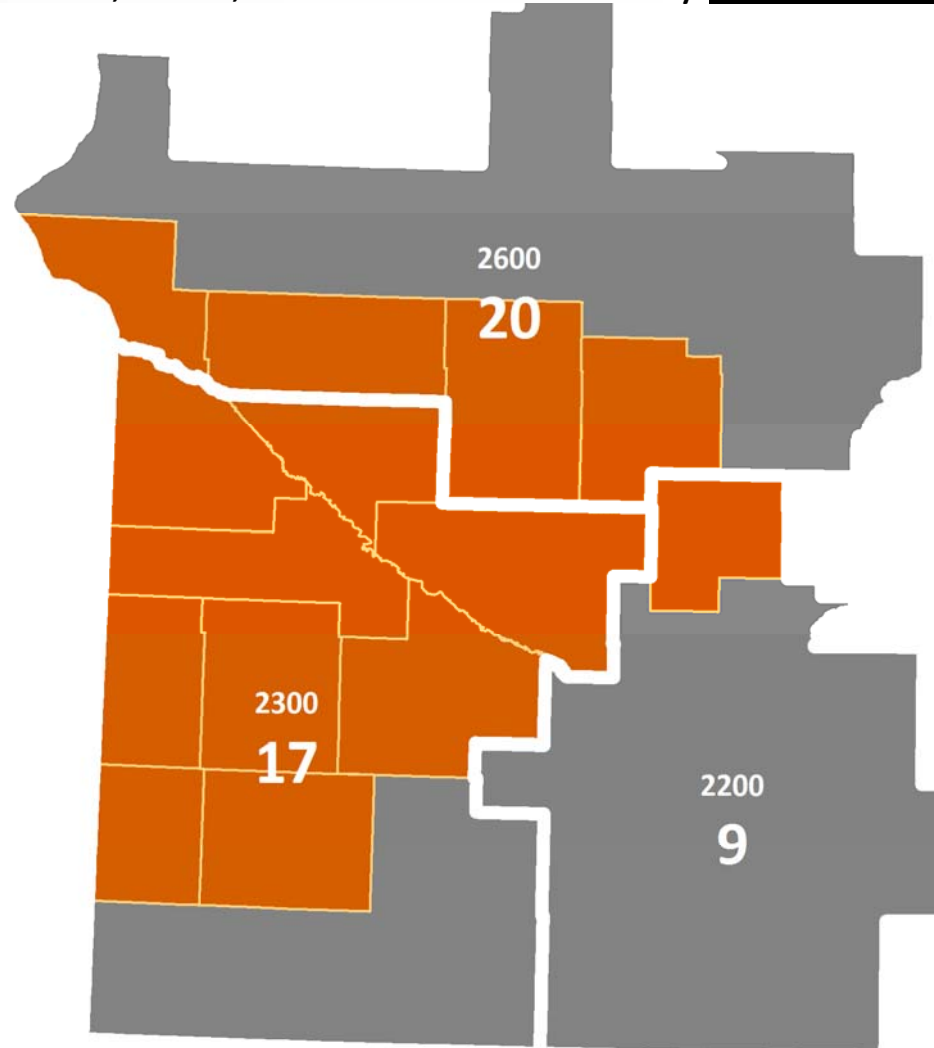
Texting Citations

April 11-17, 2016, Grant Funded On-Duty Citations



Texting Citations

April 11-17, 2016, Grant Funded On-Duty State Patrol Citations



Southwest Summary

- **The “Big Four” remain a challenge**
 - Impairment
 - Distraction
 - Seat Belt Use
 - Speed
- **Fatalities have leveled off after years of steady decline**
 - How can the Four Es work together to decrease fatalities and serious injuries?

Resources

- **Minnesota Toward Zero Deaths**
 - www.MinnesotaTZD.org
- **Strategic Highway Safety Plan**
 - www.mndot.gov/TrafficEng/Safety/SHSP
- **Minnesota Crash Facts**
 - <https://dps.mn.gov/Divisions/OTS>