




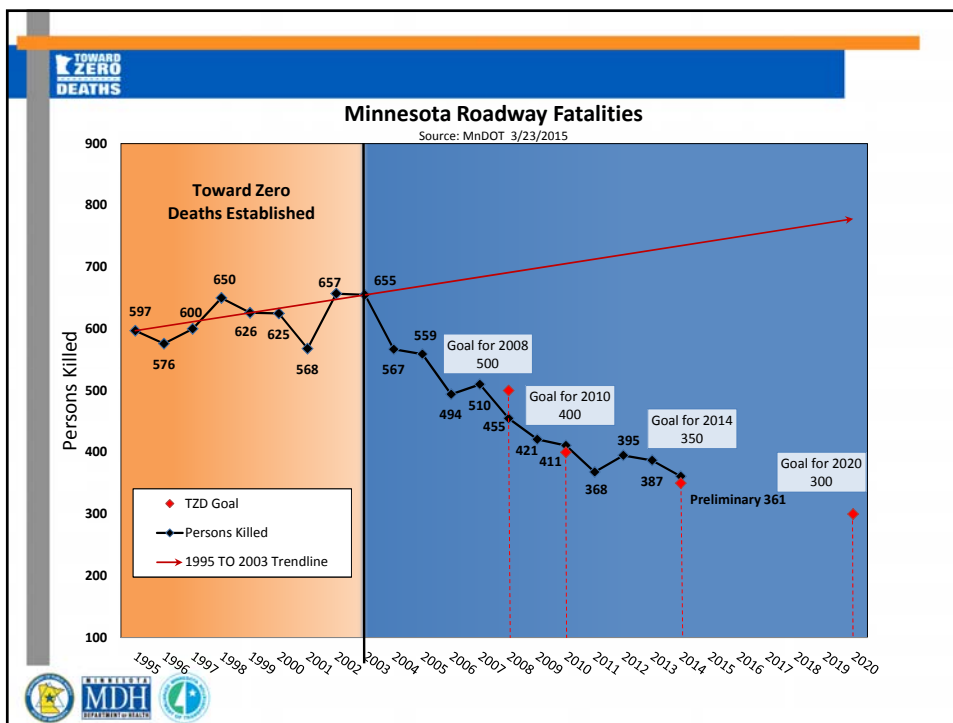
# TOWARD ZERO DEATHS

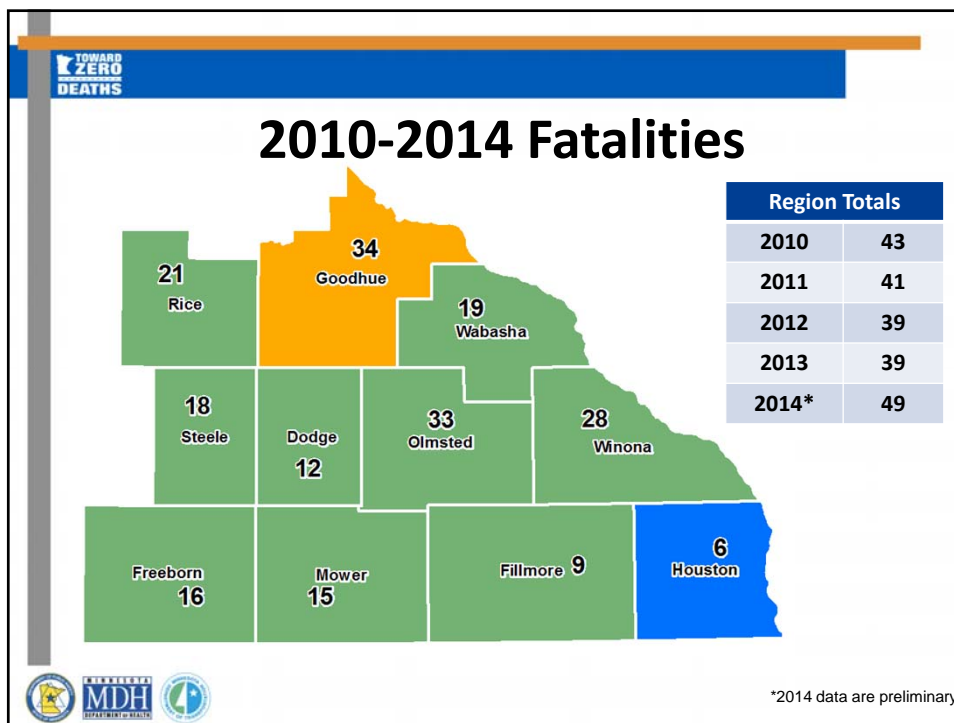
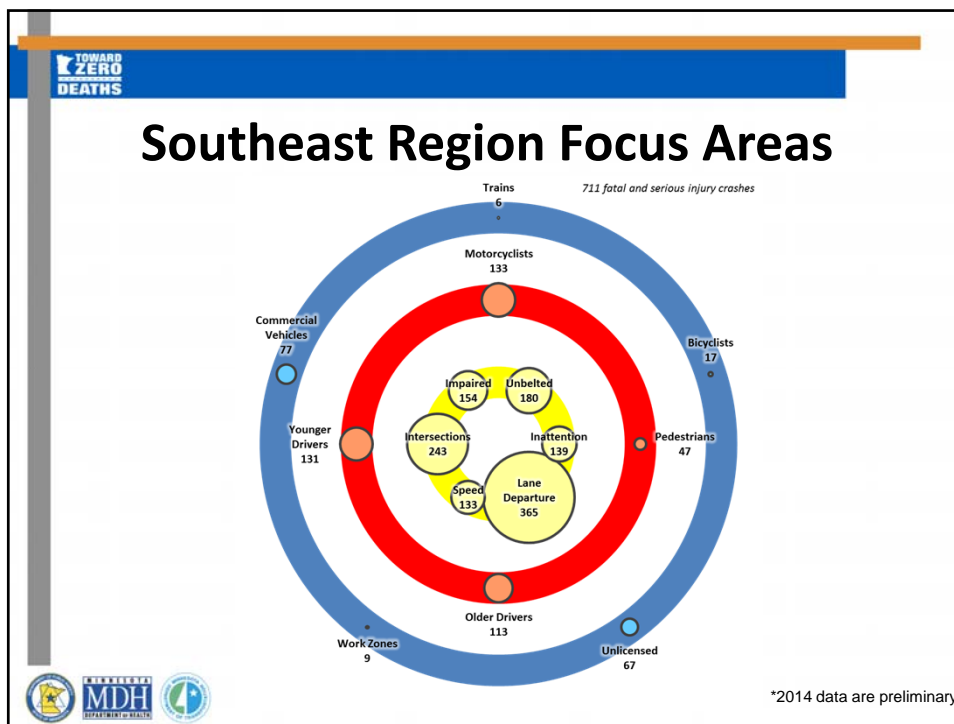
Because your life counts

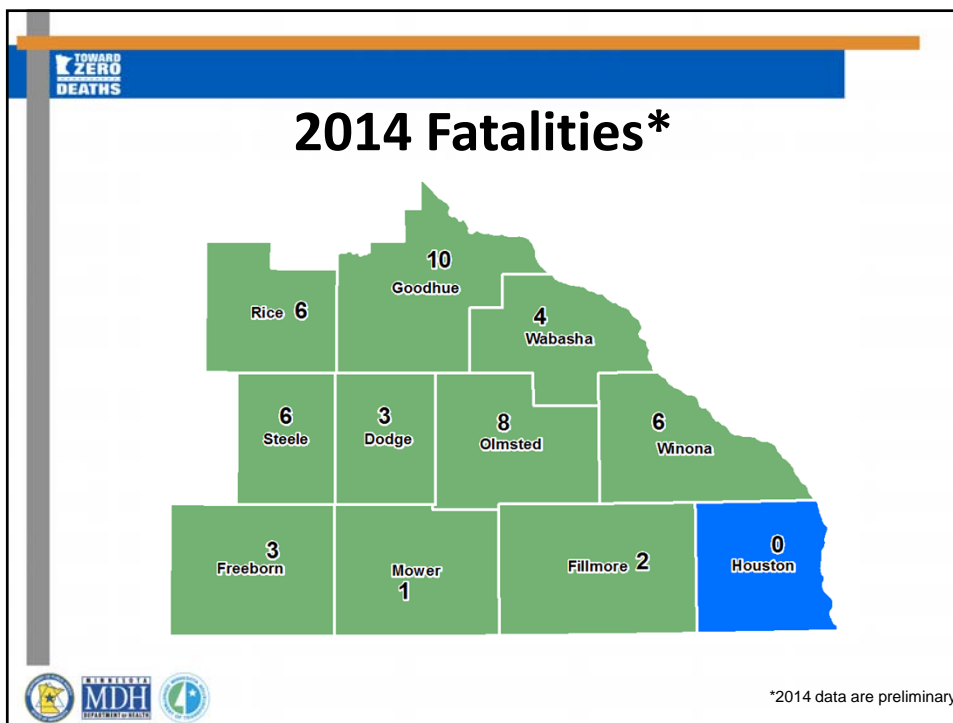
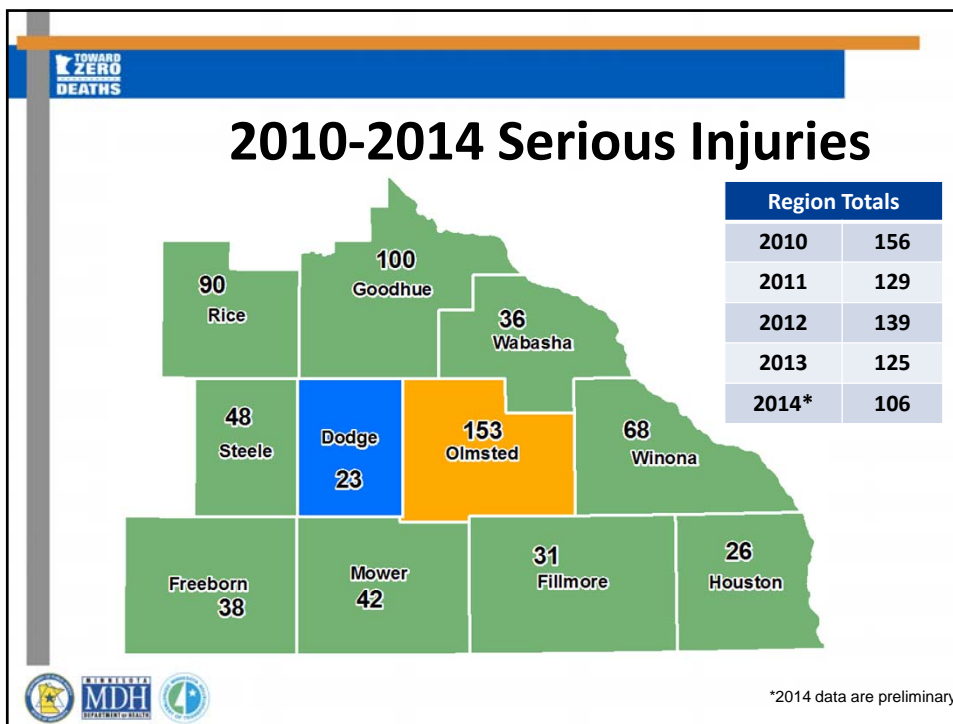
## Southeast Minnesota Regional Crash Data

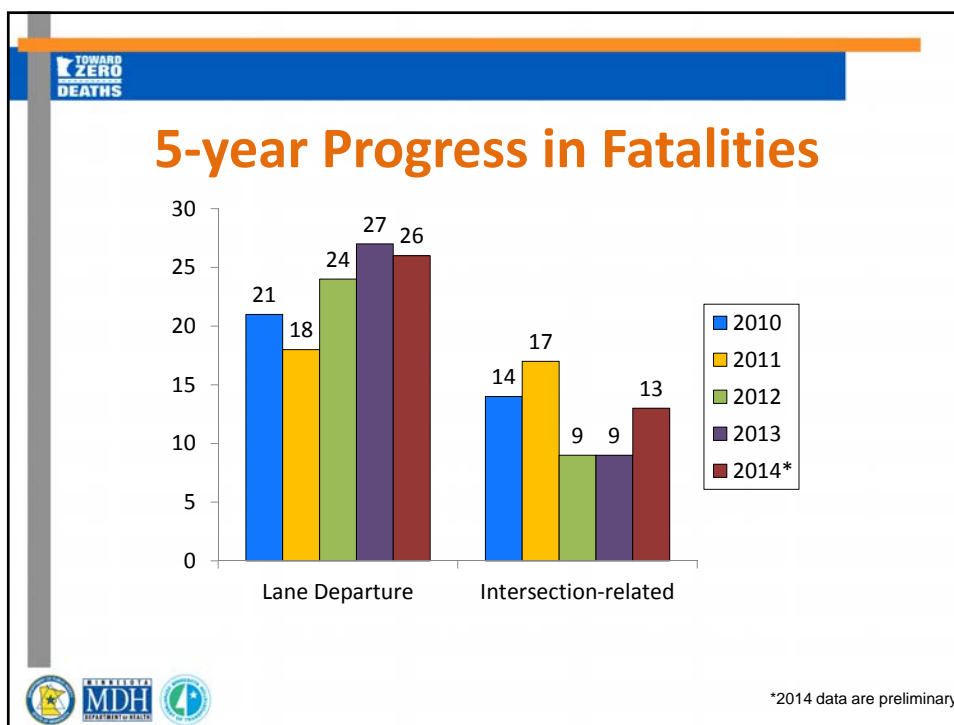
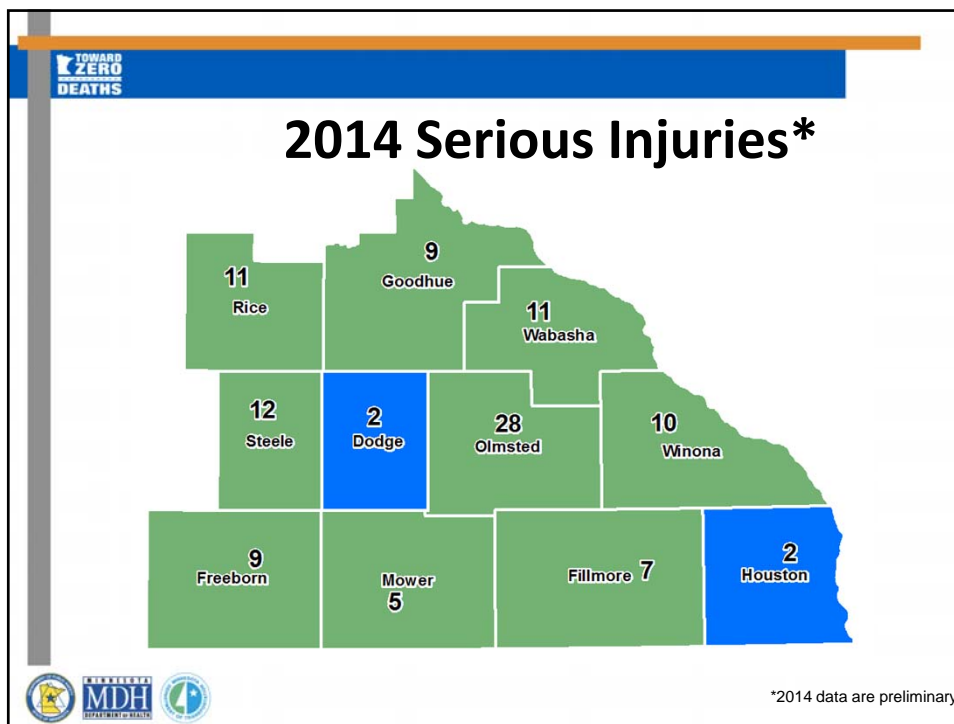
May 7, 2015

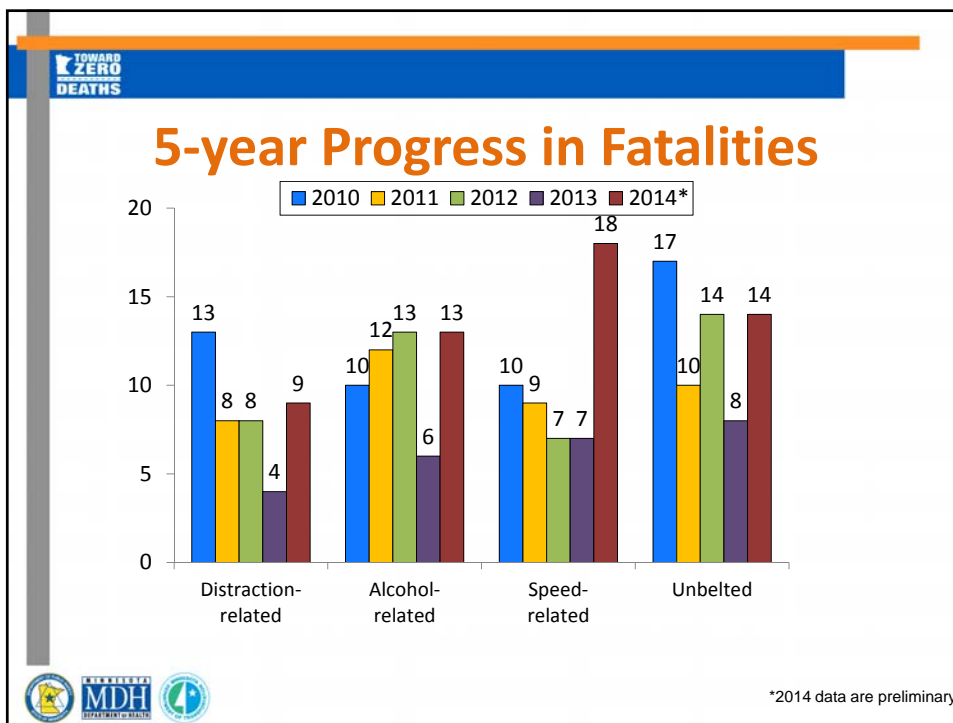
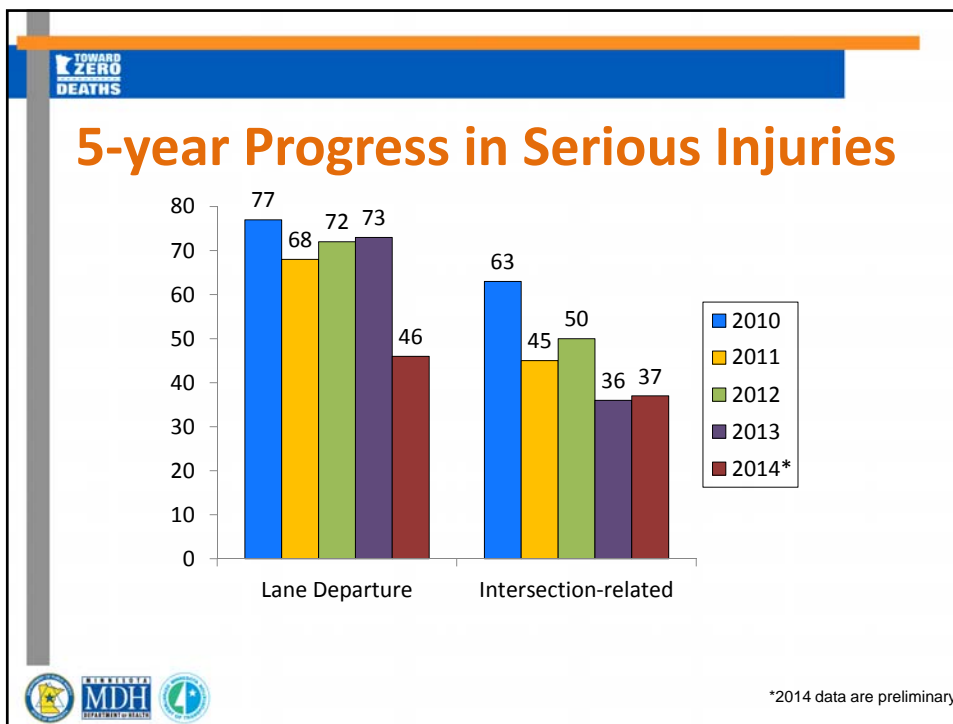




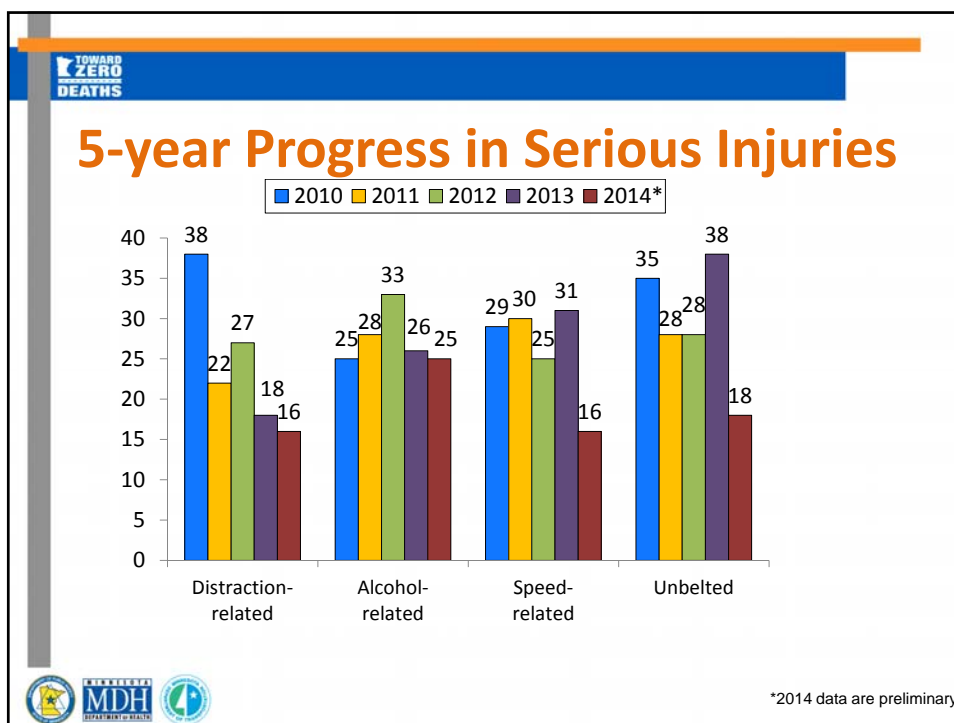












**TOWARD ZERO DEATHS**

## Key Findings for 2014\*

### Southeast Region

- Males ages 16-25 are overrepresented in serious injury and fatal crashes.
- 4.1 fatalities per month
- 8.8 serious injuries per month
- Unbelted and distracted-related crashes are decreasing




**MDH** DEPARTMENT OF HEALTH

\*2014 data are preliminary



## Key Findings for 2014\*

- Successes!
  - One County with ZERO fatalities
  - Two Counties with only TWO serious injuries
- Challenges
  - Speed and alcohol remain a challenge



\*2014 data are preliminary



## Resources

- **Minnesota Toward Zero Deaths**
  - <http://www.MinnesotaTZD.org>
- **Strategic Highway Safety Plan**
  - <http://www.dot.state.mn.us/TrafficEng/Safety/SHSP>
- **Minnesota Crash Facts**
  - <https://dps.mn.gov/Divisions/OTS>

