



TOWARD ZERO DEATHS

Because your life counts

Welcome

**Southeastern Minnesota
Toward Zero Deaths
(TZD) Workshop**
Thursday, May 17, 2012

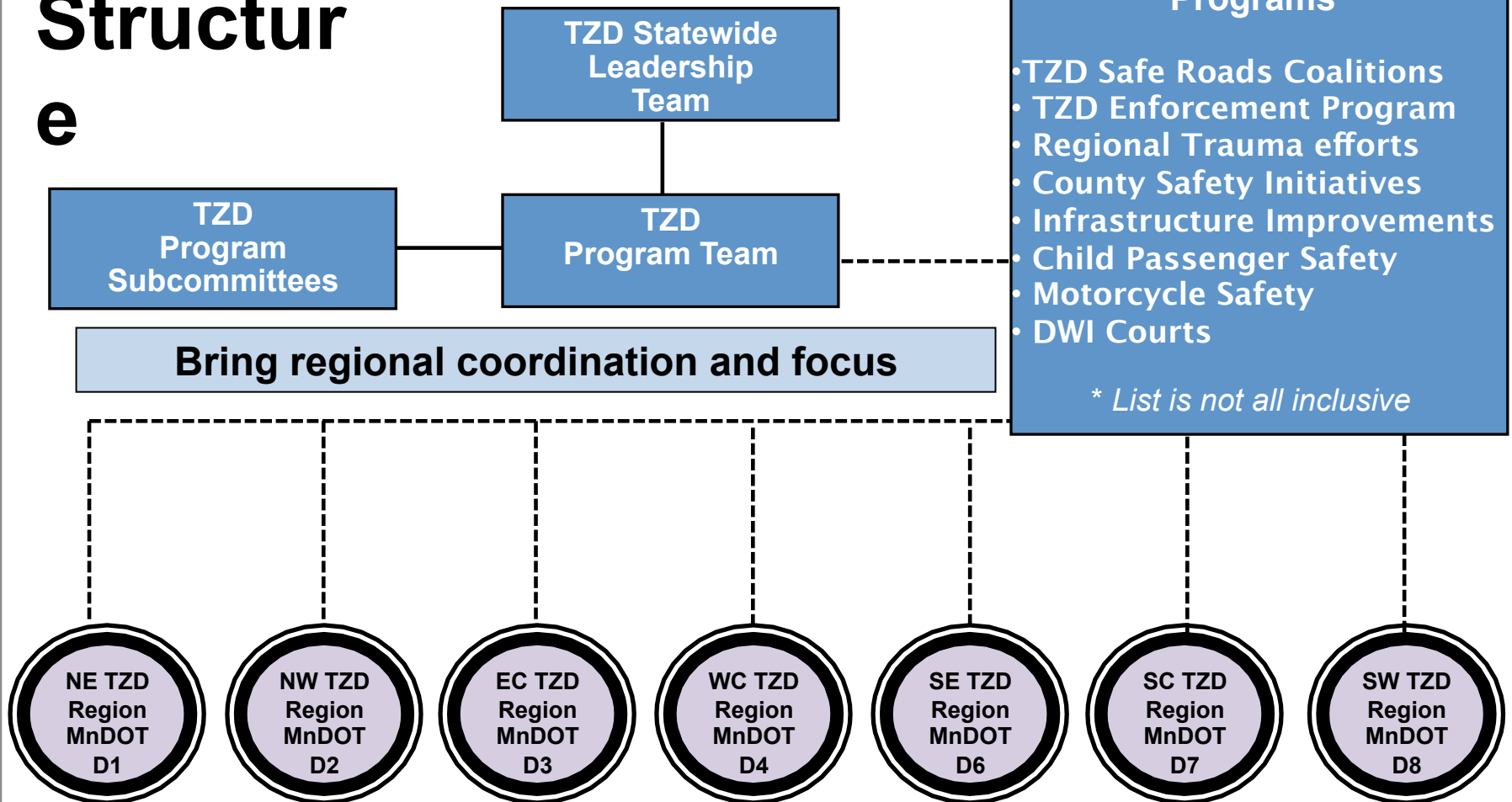
Mission

To move southeastern Minnesota toward zero deaths on our roads using education, enforcement, engineering and emergency medical & trauma services.

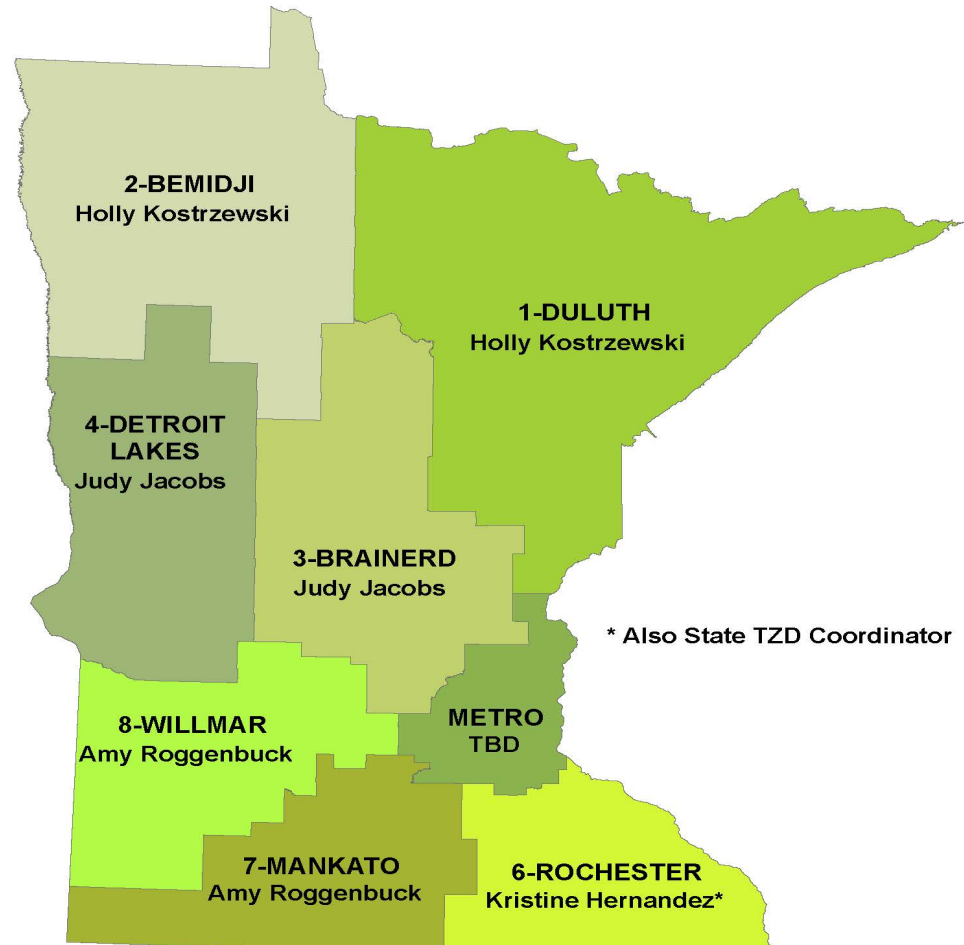


Program Structure

e



TZD Regions



2011-12 Southeastern Minnesota TZD Safe Roads coalitions

- n Dodge
- n Fillmore
- n Goodhue
- n Houston
- n Mower
- n Olmsted
- n Rice
- n Steele
- n Wabasha
- n Winona



Focus Areas

- § Speed and Aggressive Driving
- § Lack of Seat Belt Use
- § Run off Road
- § Alcohol



Albert Lea Tribune

Thursday, April 26, 2012 50¢

Woman sentenced for texting fatality

23-year-old will serve 60 days in jail for texting while driving

By Sarah Stultz
sarah.stultz@albertleatribune.com

WASECA — A 23-year-old New Richland woman was sentenced last week to 120 days in jail for texting while driving — and ultimately causing a crash that killed a man.

According to court

records, Erica Ann Nelson will complete 60 of those days in the Waseca County Jail, starting May 6. The remainder will be spent in Sentence to Service.

Nelson pleaded guilty in February in Waseca County District Court to one count of criminal

vehicular homicide in connection with the death of Ronald Berschman of Buffalo Center, Iowa, on Aug. 29, 2010.

According to court documents, Nelson was driving eastbound on Highway 90 east of New Richland, when she reportedly crossed over

the center line and hit westbound Berschman, who was riding a 2010 Harley-Davidson.

Berschman later died from injuries he sustained in the crash.

The roadway is a two-lane undivided highway with a posted speed limit of 55 mph. Nelson was found to have been traveling 73 mph, according

to the Waseca County News.

The newspaper reported Nelson made a text message at 2:02 p.m. that day that lasted for one minute. This coincided with the radio log for Waseca County Dispatch that stated the first entry for the crash was made at 2:03 p.m.

In addition to the jail

time and community service, Nelson will be on supervised probation for 10 years.

Nelson's probationary conditions include not using or possessing alcohol or drugs, obtaining permission before leaving the state, submitting a DNA sample and not

» Sentence, Page 8

Sentence: Woman faces 60 days in jail

Continued from Front Page
entering bars or liquor stores — except while working — among others.

She must attend a Mothers Against Drunk Driving impact panel every August and not text or talk on a cell phone

while driving.

If Nelson violates her probation, she faces a 41-month term in prison.

WINONA Daily News

WINONADAILYNEWS.COM

MONDAY, MARCH 19, 2012

Motorcycle-car collision injures 2

By MARY JUHL
mary.juhl@winonadailynews.com

A 56-year-old Minnesota City man was critically injured in a vehicle-motorcycle accident at the intersection of Hwy. 61 and Frank Street in Goodview on Sunday afternoon.

According to the Minnesota State Patrol, the man was attempting to cross the highway at about 4:20 p.m. when a black 2008 Subaru Forester collided with his Harley Davidson motorcycle.

Ronald Brantner, 50, of Wabasha, Minn., was driving the Subaru and sustained non-life-threatening injuries. The

According to the State Patrol, the motorcyclist was attempting to cross the highway when a Subaru Forester collided with his Harley Davidson motorcycle.

car's three passengers, including two young children, were unharmed.

First responders closed a section of the highway shortly after the crash, and a Medlink helicopter was called to the scene. Several agencies responded, including the Minnesota State Patrol, Winona County Sheriff's

Department, Goodview First Responders, Goodview Fire, Winona Ambulance and Medlink.

A teal and blue helicopter touched down in a soccer field at the nearby Michael LaCarme Memorial Park in Goodview about 30 minutes after the collision, and six first responders transported the motorcycle's driver from an ambulance to the helicopter by stretcher. He was flown to Gunderson Lutheran hospital in La Crosse for treatment.

Goodview Police Chief Todd Ives said officers were trying to contact the injured parties' families about an hour after the crash.



ANDREW LINK/WINONA DAILY NEWS

Emergency responders tend to the driver of a motorcycle that collided with a Subaru Forester on U.S. Hwy. 61 at 68th Avenue on Sunday afternoon in Goodview. The motorcyclist was airlifted from nearby Michael LaCarme Memorial Park to an area hospital.

Southeast MN

INTERSTATE 90



Scott Jacobson / scjacobson@postbulletin.com

Moody's Towing of Rochester and Bill's Towing of St. Charles work to right a semi-trailer that crashed into the embankment of the U.S. 63 overpass while heading west on Interstate 90, south of Rochester. Minnesota State Patrol troopers, Rochester and Stewartville firefighters, and Gold Cross Ambulance responded to the crash.

Semi crashes into bridge approach

By Ken Hanson
kenhanson@postbulletin.com • (507) 285-7700

STEWARTVILLE — A semi-trailer rolled along Interstate 90 at U.S. 63, south of Rochester, on Saturday.

The driver, Lowell Wooner, 62, of Chadfield, wasn't seriously injured, but an estimated 100 gallons of diesel fuel spilled.

Wooner was westbound on I-90 when the semi, owned by Chadfield Trucking, veered off the highway into the north ditch, crashing into the approach for the

U.S. 63 bridge over I-90, according to the Minnesota State Patrol.

The report says that Wooner had his seat belt fastened.

The semi and trailer are total losses, according to the Rochester Fire Department.

Westbound I-90 was closed entirely for about 20 minutes, and one lane was closed for about four hours while the spill was cleaned up.

The Stewartville Fire Department was sent to the scene about 1:40 p.m., and

the Rochester Fire Department went at about 2:10 p.m. to help with the cleanup of hazardous materials.

Firefighters used absorbent booms and pads to clean up the diesel fuel. The trucking company retained the services of Environmental Restoration, of Roseville, to evaluate the environmental damage, according to the Rochester Fire Department.

A version of this story appears in the Austin Post-Bulletin.

Monday
APRIL 2, 2012

StarTribune

startribune.com

FIVE FROM MINNESOTA KILLED IN KANSAS CRASH



Investigators worked at the horrific scene in a ravine where a Minnesota-bound motor home crashed on Sunday. The vehicle had been traveling northbound on Interstate 95 in northeast Kansas. Officials said the vehicle was carrying 18 people and pulling a trailer. **EMILY COV - Associated Press**

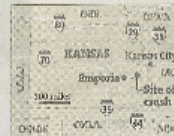
• All the dead were members of one family that was returning from a vacation in Texas.

By **HERÓN MÁRQUEZ SUKALA** and **JIM ADAMS**
Star Tribune staff writers

Five members of a motorcycle-racing family from Jordan, Minn., were killed Sunday while returning from a Texas vacation when the motorhome they were riding

Another 13 people, including several other members of the Kerber family, were critically injured in the crash just outside of Williamsburg, Kan., according to authorities and friends of the family.

"All day long, we've been hoping and saying a prayer or two," said John Marks, a close family friend of the Kerbers,



Source: **REUTERS/AP/WIDE WORLD**

the Scott County community southwest of the Twin Cities metro area.

The family, including mother Pauline Kerber, 46

children, was returning from a week in Texas, where they had vacationed and participated in motorcycle races.

Investigators in Kansas said the motor home was a Freightliner box truck set up with living quarters inside. Authorities have not released the names of the deceased, but friends have identified the dead as members of the extended Kerber family.

Marks, who described him-

WINONA Daily News

WINONADAILYNEWS.COM

WEDNESDAY, APRIL 25, 2012

DUST STARTS TO FLY



ANDREW LIKINS/WEDNESDAY NEWS

Construction has begun on a \$3.4 million roundabout at the intersection of Homer Road and County Road 17 in Winona. Homer Road will remain open throughout construction, with some single lane closures, and Pleasant Valley Road will be blocked off for up to 40 working days.

Work begins on \$3.4M roundabout

By MARY JUHL
maryjuhl@winonadailynews.com

The roundabout project at the intersection of Homer Road and County Road 17 is under way.

Homer Road will remain open with occasional single-lane closures, while Pleasant Valley Road will be blocked off for up to 40 working days, Winona County has designated an official detour running west on County Road 17 to

QUESTION? COMPLAINT?

Take it to Jay Baures with the Winona County Highway Department at 507-457-8848 or jbaures@co.winona.mn.us.

expects to see more traffic and higher dust levels.

"We won't have a clean car all summer," McMiller said. "It's not a big deal, but I like a

PROJECT UPDATES ONLINE

Text "follow countyrd17" to 40404 to receive periodic updates. You can also follow the project on Twitter (@CountyRd17) or at facebook.com/CountyRd17.

pleted, I think we'll really appreciate the traffic moving more smoothly."

with them," she said.

Sarah Langowski of Winona, Minn., uses Homer Road to get to class at Southeast Technical College.

She doesn't anticipate construction interfering too much with her daily commute, but she said she's not sure the project is necessary.

"It's kind of a pain," she said. "I don't think we really need to have a roundabout; there's yield signs already."

The \$3.4 million project will

Monday
MAY 7, 2012

StarTribune

startribune.com

Feds squeeze drug shipments

• Two dozen packages of synthetic drugs from out-of-state seized.

BY DAN BROWNING
dbrowning@startribune.com

Federal investigators have ramped up their attack on synthetic drugs entering Minnesota and western Wisconsin, seizing more than two dozen shipments from South Carolina, Texas and Nevada, as well as several intrastate shipments, the Star Tribune has found.

The U.S. Postal Inspection Service,

which conducted the seizures, isn't talking about its investigations, most of which remain active. Jeff Long, a spokesman, said only that it's the mission of the service to keep the mail safe.

Postal inspectors in St. Paul have jurisdiction in Minnesota and western Wisconsin, and their seizures follow laws passed last year in both states that ban certain chemicals commonly found in synthetic marijuana and stimulants

sold as "bath salts" or "plant food."

Synthetic marijuana and chemical analogs for such stimulants as methamphetamine, cocaine and MDMA (Ecstasy) have led to a rash of overdoses in recent years. Minnesota banned the sale of these drug analogs as of last July 1. The Legislature is working on a bill now that would make prosecution easier. Wisconsin passed a similar ban that took effect July 11. In addition, the U.S. Drug En-

Synthetics continues on A7 ▶

MONDAY, MAY 7, 2012 • STAR TRIBUNE • A7

Feds put squeeze on drug shipments

◀ SYNTHETICS FROM A1

forcement Administration has classified several chemicals commonly used to mimic psychoactive drugs as controlled substances.

Hoffman man charged

Richard Jacobs, 37, of Hoffman, Minn., appears to be an early target of the new law. According to a federal search warrant filed July 18, Jacobs previously had purchased several packages of synthetic drugs from Southern Burn, a South Carolina firm. He also bought synthetics from a Texas firm, WTF Herbsals, also known as We're the Future Herbsals.

Jacobs nearly overdosed after snorting bath salts for three days with his girlfriend. That led to criminal drug possession charges in Grant County District Court. He pleaded guilty last week to a gross misdemeanor and was sentenced to a year in jail.

Kent Marshall, his attorney, said Thursday that his client was already in prison on another charge or he would have

READ OUR SERIES



about the new wave of designer drugs and the nation's efforts to combat the growing menace at startribune.com/lethaldoss.

from Greenville, S.C., and at least nine shipments that listed return addresses in Houston.

Ravi Patel, 26, of Greenville, is the registered agent for Southern Burn and another South Carolina company called Revolution Distribution. Both entities listed the same UPS Store as a return address on shipments containing synthetic drugs. The packages were sent to various addresses in the Twin Cities and Rochester, as well as in Tomah and Black River Falls, Wis.

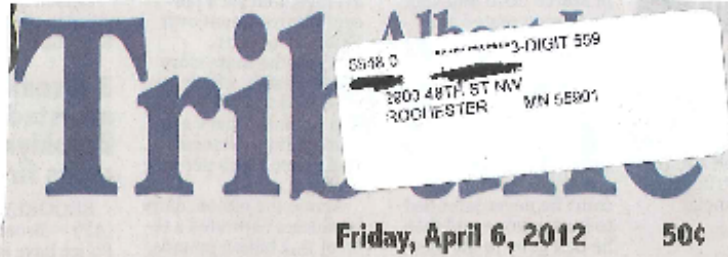
Trail to Texas and Nevada

Patel did not respond to messages seeking comment. Calls to Southern Burn's phone number are picked up by an answering service. The service answers "The Aroma Shop" and "Amsterdam High," which

and does business through wtherbals.com. Patterson, 30, said Sunday that he believed his products were legal in every state. He said he's recalling all shipments to Minnesota and will make no further sales in the state until the issue is straightened out.

Investigators said in court filings that they traced nearly two dozen shipments from another Texas company, JMR Enterprises Unlimited, to at least 10 names and addresses in Roseau and Warroad. The packages appear to have been purchased through an online "head shop" called the Supply Boys, court documents say.

Nine packages listed return addresses in Houston, but they appear to have actually been shipped from Henderson, Nev. The other package listed a re-



5 teens injured in rollover

Front occupants had to be extricated from 2007 Chevy pickup

By Kelli Lageson
kellilageson@albertleatribune.com

CLARKS GROVE — Five teens were injured around 2:30 p.m. Thursday in a rollover about two miles southwest of Clarks Grove.

A 2007 Chevy pickup driven by 18-year-old Andrew Peter Borland of Albert Lea rolled several

times upon entering a ditch off 270th Street. Borland was airlifted from the scene by a Mayo Clinic helicopter, but his injuries were not life-threatening, according to the Freeborn County Sheriff's Office.

The four other passengers injured were Lewis Warren Kelly, 16, Isaac Charles Olson, 15, Domi-

nic Francis Sargent, 17, and Levi Colton West, 17, all of Albert Lea, according to the Freeborn County Sheriff's Office. They were all transferred by ambulance to Mayo Clinic Health System in Albert Lea, and their injuries are not life-threatening. As of this morning

► Rollover, Page 10



A Mayo Clinic helicopter, the Freeborn County Sheriff's Office, Clarks Grove Fire Department, Mayo Clinic Health System in Albert Lea and Albert Lea Fire Department all responded to a rollover southwest of Clarks Grove.

Kelli Lageson/
Albert Lea Tribune

Page 10 • Albert Lea Tribune • Friday, April 6, 2012

Rollover: Crash happened Thursday

Continued from Front Page
Borland is in fair condition and Olson is in serious condition at St. Marys Hospital in Rochester.

The rollover happened near the intersection of two gravel roads: 270th Street and 750th Avenue. The vehicle had been traveling east when it left the roadway and went into the south ditch. Preliminary

investigation shows the vehicle was traveling at excessive speeds when it left the road, according to a press release from the Freeborn County Sheriff's Office.

No occupants of the truck were ejected, and authorities believe they were all wearing their seat belts. There was no indication that alcohol was involved in the crash.

The driver and front

seat passenger were extricated from the vehicle by the Albert Lea Fire Department, while the three in the back seat could climb out the window of the pickup's cab.

Responding to the crash were Clarks Grove Fire Department, Albert Lea Fire Department, Freeborn County Sheriff's Office and two ambulance crews from the Albert Lea hospital.

RED WING REPUBLICAN
EAGLE
RED WING, MINNESOTA

Weekend

March 24 & 25, 2012

Woman dies after Bench Street crash

Both drivers said they had a green light

By Sarah Gorvin

sgorvin@republican-eagle.com

Police say there hasn't been a fatal crash inside Red Wing City limits in years.

"I can't remember when the last one was," Police Chief Tim Sletten said.

But an 89-year-old woman died Wednesday in a car crash on Bench Street near Tyler Road South, the Red Wing Police Department reported.

Ardith Latcham, 89, 424 W. Fourth Street, was a passenger in a 2003 Buick being driven by her husband, Charles Latcham, 86.

At around 2 p.m., their vehicle was southbound on Bench Street and began making a left turn onto Pflugger Court. As they turned, the vehicle was struck in the passenger side door by a northbound 2007 Mercury driven by Bruce Lund



Lund had possible injuries, though he was not transported by ambulance.

Under investigation

Police are investigating the cause of the crash. Charles Latcham told police he had a green arrow signal, while Lund also said he had a green light. Chief Tim Sletten there didn't appear to be any problems affecting the traffic lights at the time of the crash.

"We looked at the lights and they were functioning fine," he said.

Sletten added that any witnesses to the crash should contact Red Wing

Ambulance to Fairview Red Wing Medical Center, where Ardith later died.

Wednesday, May 9, 2012

Albert Lea Tribune

Woman injured when semi runs red light

By Sarah Stultz
sarah.stultz@tribuneonline.com

An Albert Lea woman was injured Tuesday afternoon after a semi reportedly ran a red light and crashed into her car at the intersection of Minnesota Highway 13 and West Main Street.

Debbie Lee Brandt of Albert Lea was extricated from a black Volkswagen Beetle

and transported by ambulance to Mayo Clinic Health System in Albert Lea.

Hospital spokeswoman Jennifer Levison said Brandt was treated and released to another hospital.

Her condition Wednesday morning was unknown, Albert Lea Police Lt. J.D. Carlson said Brandt was

▶ Crash, Page 3



Emergency crews from Mayo Clinic Health System in Albert Lea transport a woman on a stretcher to an ambulance after a crash Tuesday at Minnesota Highway 13 and West Main Street near Graceland Cemetery.

Sarah Stultz/
Albert Lea Tribune



Sarah Stultz/Albert Lea Tribune

Emergency crews respond to a semi versus Volkswagen Beetle crash Tuesday afternoon. A woman had to be extricated from the Volkswagen.

Crash: Woman had to be extricated

Continued from Front Page
conscious when emergency personnel arrived at the scene; however, she reportedly suffered from a head injury.

According to police, the semi, driven by Gary Leroy Sordahl, 42, was traveling southbound on Minnesota Highway 13 just before 1:30 p.m. when it collided with the Volkswagen. It is unclear which direction the Volkswagen was traveling.

The semi driver pulled off to the side of U.S. Highway 69 near the United Methodist Church after the crash and could



An Albert Lea police officer talks with the driver of a semi involved in a crash Tuesday afternoon at the intersection of Minnesota Highway 13 and West Main Street.

be seen talking to an officer as emergency responders treated Brandt.

A report later in the day stated Sordahl was not feeling well.



THURSDAY
April 5, 2012



Rollover shuts down 52

A southbound Kwik Trip semi tanker-truck loaded with about 8,500 gallons of fuel went off of Highway 52 and into the median north of Hinder at about 1:30 a.m. on Thursday, March 29. The driver, Thomas Drievold, 46, Holmen, WI, was ejected according to the State Patrol. Drievold was flown to St. Mary's emergency room in Rochester with what the State Patrol called apparently non-life threatening injuries. Traffic was shut down on Hwy. 52 between County Roads 9 and 8 and detoured on side roads until about 10 a.m. while a minor fuel leak was cleaned up and the truck could be removed. - Ken Higgerty photo

Southeast MN

INTERSTATE 90



Scott Jacobson / sjacobson@postbulletin.com

Moody's Towing of Rochester and Bill's Towing of St. Charles work to right a semi-trailer that crashed into the embankment of the U.S. 63 overpass while heading west on Interstate 90, south of Rochester. Minnesota State Patrol troopers, Rochester and Stewartville firefighters, and Gold Cross Ambulance responded to the crash.

Semi crashes into bridge approach

By Ken Hanson
khanson@postbulletin.com • (537) 285-7700

STEWARTVILLE — A semi-trailer rolled along Interstate 90 at U.S. 63, south of Rochester, on Saturday.

The driver, Lowell Wooner, 62, of Chalfield, wasn't seriously injured, but an estimated 100 gallons of diesel fuel spilled.

Wooner was westbound on I-90 when the semi, owned by Chadfield Trucking, veered off the highway into the north ditch, crashing into the approach for the

U.S. 63 bridge over I-90, according to the Minnesota State Patrol.

The report says that Wooner had his seat belt fastened.

The semi and trailer are total losses, according to the Rochester Fire Department.

Westbound I-90 was closed entirely for about 20 minutes, and one lane was closed for about four hours while the spill was cleaned up.

The Stewartville Fire Department was sent to the scene about 1:40 p.m., and

the Rochester Fire Department went at about 2:10 p.m. to help with the cleanup of hazardous materials.

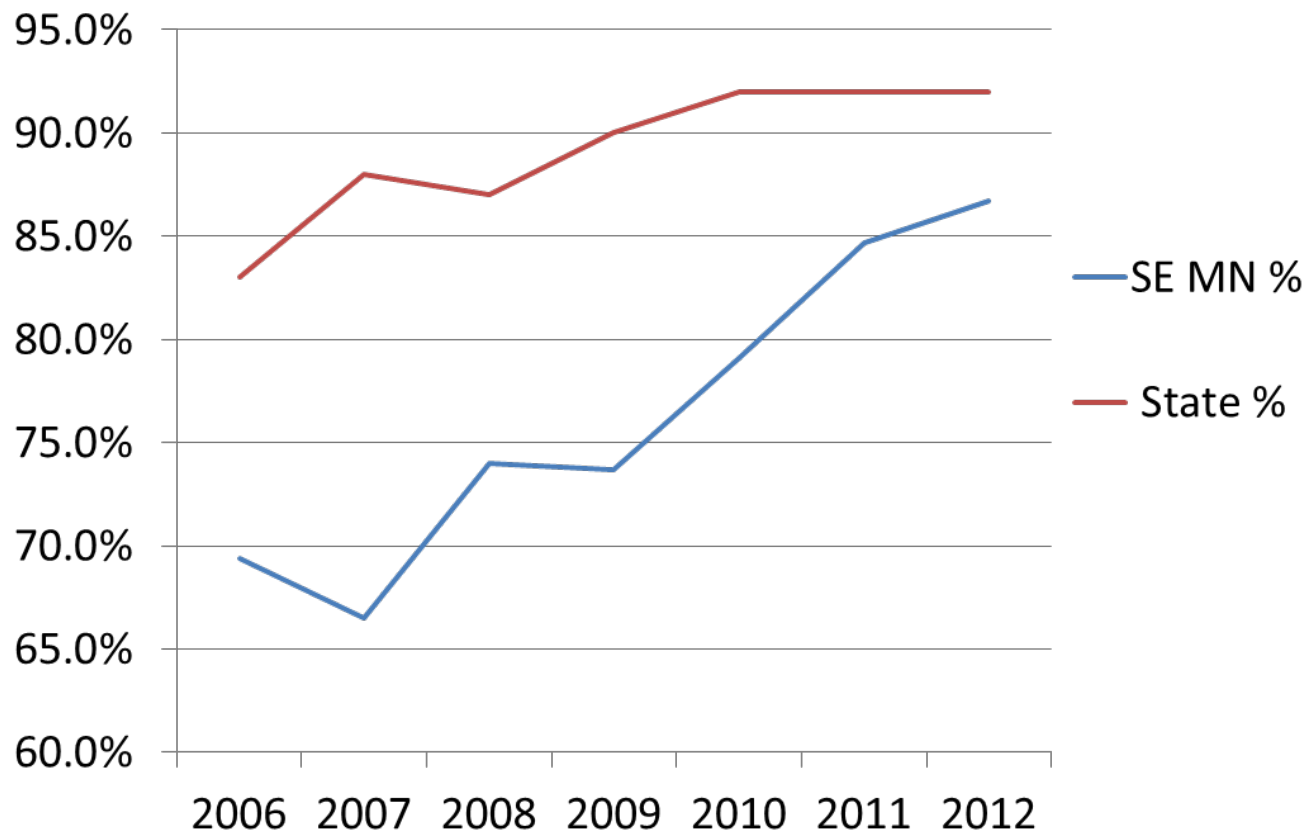
Firefighters used absorbent booms and pads to clean up the diesel fuel. The trucking company retained the services of Environmental Restoration, of Roseville, to evaluate the environmental damage, according to the Rochester Fire Department.

A version of this story appears in the Austin Post Bulletin.

Lt. Brian Buck, Minnesota
State Patrol and
Southeastern Minnesota
TZD Co-chair



In 2012, the regional seat belt compliance rate reached **87 percent!**



Seat Belt Card (Regional Pilot Program)

SEAT BELTS SAVE LIVES...

**BUT ONLY IF YOU
USE THEM**

Seat belts are the simplest and most effective way to prevent death or injury in a crash — especially on roads plagued with speeding, distracted and impaired drivers.



Drivers and all passengers must be buckled up. Law enforcement will ticket unbelted drivers and passengers. A seat belt fine can cost more than \$100.

BUCKLE UP. EVERY SEAT. EVERY TIME.



Goodhue family survives horrific car crash in 2010.

Rachel was driving her three brothers to school. At a county road intersection near Goodhue, her car collided with a car driven by Janice, who was taking her grandson Dante to school. Dante spent 40 days in the hospital due to injuries. All involved in the crash survived. Deputy Jeff Sjoblom, who assisted at the scene, said, "Definitely in this crash, there's no doubt about it, the belt saved their lives."



Crash survivors Rachel, Ross, Ray, Ryan, and Dante display their "Saved by the Belt" awards for wearing their seat belts.

How important is a seat belt?



Kristine Hernandez, Statewide & Southeastern Minnesota Toward Zero Deaths Coordinator



Toward Zero Deaths Program Update



Sue Groth
State Traffic
Engineer
Minnesota
Department of
Transportation
& TZD Leadership
Co-chair

Southeastern Minnesota Crash Facts

Susie Palmer
Traffic Safety Program Manager
Office of Traffic Safety
Minnesota Department of Public Safety



National TZD Update

Bernie Arseneau
Deputy
Commissioner
Minnesota
Department of
Transportation



Break



Current Trends in Drug Abuse: Prescription and Synthetic Drugs

Carol Falkowski
Drug Abuse Strategy Officer
Minnesota Department of
Human Services



What to expect when you stop a drugged driver

Major Mike Asleson
Minnesota State Patrol



Lunch & Exhibits



Personal Impact Statement

- § Lt. Scott Sherden, Rochester Police Dept.
- § Sandy Melville, mother of victim
- § Eric Woodford
Criminal Division Lead Attorney
Olmsted County Attorney's Office



Breakout Sessions



Break



Drug Courts: Justice that Heals

Wabasha County DWI / Drug Court

Judge Terrence Walters
Wabasha County DWI / Drug
Court

Wrap Up

Nelrae Succio

MnDOT District Engineer

District 6



How can you be involved in TZD?

- § Quarterly stakeholder breakfasts in person or online
- § Annual statewide conference and/or regional workshops
- § Regional TZD Steering Committee meetings and news conference & special events
- § TZD mailing list(s)



TZD Success Factors



- § Commitment to change American culture regarding traffic safety
- § Collaboration with other traffic-safety advocates
- § Promote best practices and lessons learned

Goal: Zero Deaths



Door Prizes!



Goal 2

Decrease the number of people severely injured or killed in crashes where **Speeding** has been identified as a contributing factor, from the past

3-year average (2004–06) of 78, down to 60 people.

As of 2009, our 3-year average (2006–08) was 71.



Overall Regional Goal – Update:

In 2011, the 3-year average (2008-10) for traffic-related fatality numbers show the region's total to be **56** – only one fatality away from reaching the overall regional goal established in 2006.

Southeastern Minnesota Toward Zero Deaths

Overall Regional Goal:

To reduce traffic fatalities in southeastern Minnesota from the past 3-year average (using 2004–06 data) of **67**, down to **55** fatalities by 2012.

Goal 1

Increase **seat belt** usage in southeastern Minnesota, from 69 percent (2006) to the statewide average of 83 percent (2006).

As of 2010, the regional seatbelt compliance rate was 79 percent, compared to the statewide average of 92 percent.



Goal 3

- Decrease the number of people severely injured or killed in **Run-off-Road** crashes from the 3-year average (2004-06) of 105 down to 85 people.



*As of 2009, the 3-year
average (2006-08)*

Goal 2: Speed Update

In 2010, the 3-year average (2007-09) was
60!



Southeastern Minnesota TZD Steering Committee, con't.

- Curt Bolles, Olmsted County Public Works
- Don Buck, Goodhue County Driver Education
- Gary Shannon, Rochester Public Works
- Grant Kemp, Traffic Safety Volunteer
- Guy Kohlhofer, Dodge County Public Works
- John Grindeland, Fillmore County Public Works
- Karen Schaar, Olmsted County Public Health
- Kari Etrheim, Olmsted County Public Health

Southeastern Minnesota TZD Steering Committee, con't.

- Michael Sheehan, Olmsted County Public Works
- Nancy Klema, Mn/DOT Traffic
- Nelrae Succio, Mn/DOT District Engineer
- Sgt. Scott Tulus, Rochester Police Department
- Sgt. Mal McCarthy, Minnesota State Patrol
- Sgt. Vince Scheckel, Olmsted County Sheriff's Office
- Bruce Odenbach, Driver Improvement Associates
- Autumn Wright, Mn/DOT

Southeastern Minnesota TZD Steering Committee

- Adam Newbloom, Enhanced Driving Institute
- Al Smeby, Driver Improvement Associates
- Andrea Gierok, Winona County Safe Communities
- Ashlyn Christianson, Goodhue County Safe Communities
- Brad Kollman, DPS OTS Law Enforcement Liaison
- Capt. Nancy Silkey, State Patrol

Southeastern Minnesota TZD Steering Committee, con't.

- Kathy Cooper, Rice County Safe Communities
- Kristine Hernandez, Statewide & Southeast Minnesota TZD coordinator
- Laura Turek, DPS Office of Traffic Safety
- Lee Glamm, AAA
- Sheriff Lon Thiele, Steele County
- Lt. Darren Juntunen, Minnesota State Patrol
- Lt. Randy Slinger, Minnesota State Patrol



Worksite Education & Policies



Goal 3: Run-Off-Road Update

In 2010, the 3-year average (2007-09) was **90.**



Year-to-Date Fatality Rate

- As of yesterday, there were 90 traffic-related fatalities statewide versus 127 at this time last year.

County Highway Safety Plans





For additional TZD information, log on to:
<http://www.minnesotatzd.org/>

Teen Driving/Parent Component

