

# Traffic Crashes in Southeast Minnesota

## Toward Zero Deaths Workshop

Office of Traffic Safety  
Department of Public Safety

May 20, 2010



# Motor Vehicle Crashes = Leading Cause of Death (Ages 1-34)

- 93% of deaths are a result of driver behavior
- 34% are due to road factors
- 12% are a result of the driver's vehicle
- Combination of these factors contribute to crashes.





# **TZD Key Principles**

Use the data as your foundation  
to guide initiatives

Avoid pre-determined solutions  
in search of a problem



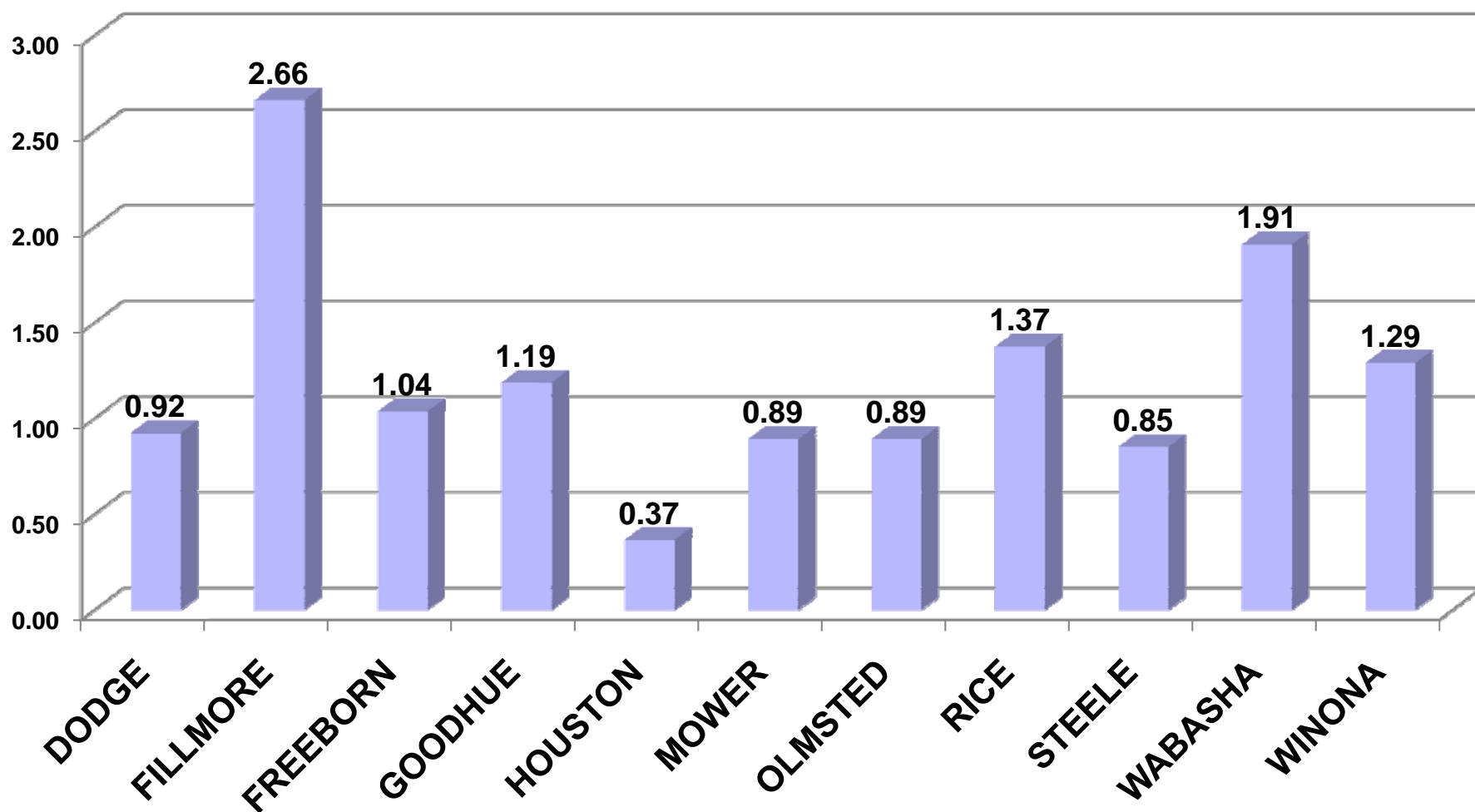
# SE 2006-2009 Crash Data Summary

Year	Total Crashes	PDO Crashes	Injury Crashes	Severe Injuries	Fatals
2006	7,121	4,809	2,247	229	69
2007	7,066	4,878	2,140	223	53
2008	7,549	5,233	2,252	222	68
*2009	6,624	4,595	1,985	163	57

\*all 2009 data throughout presentation are preliminary

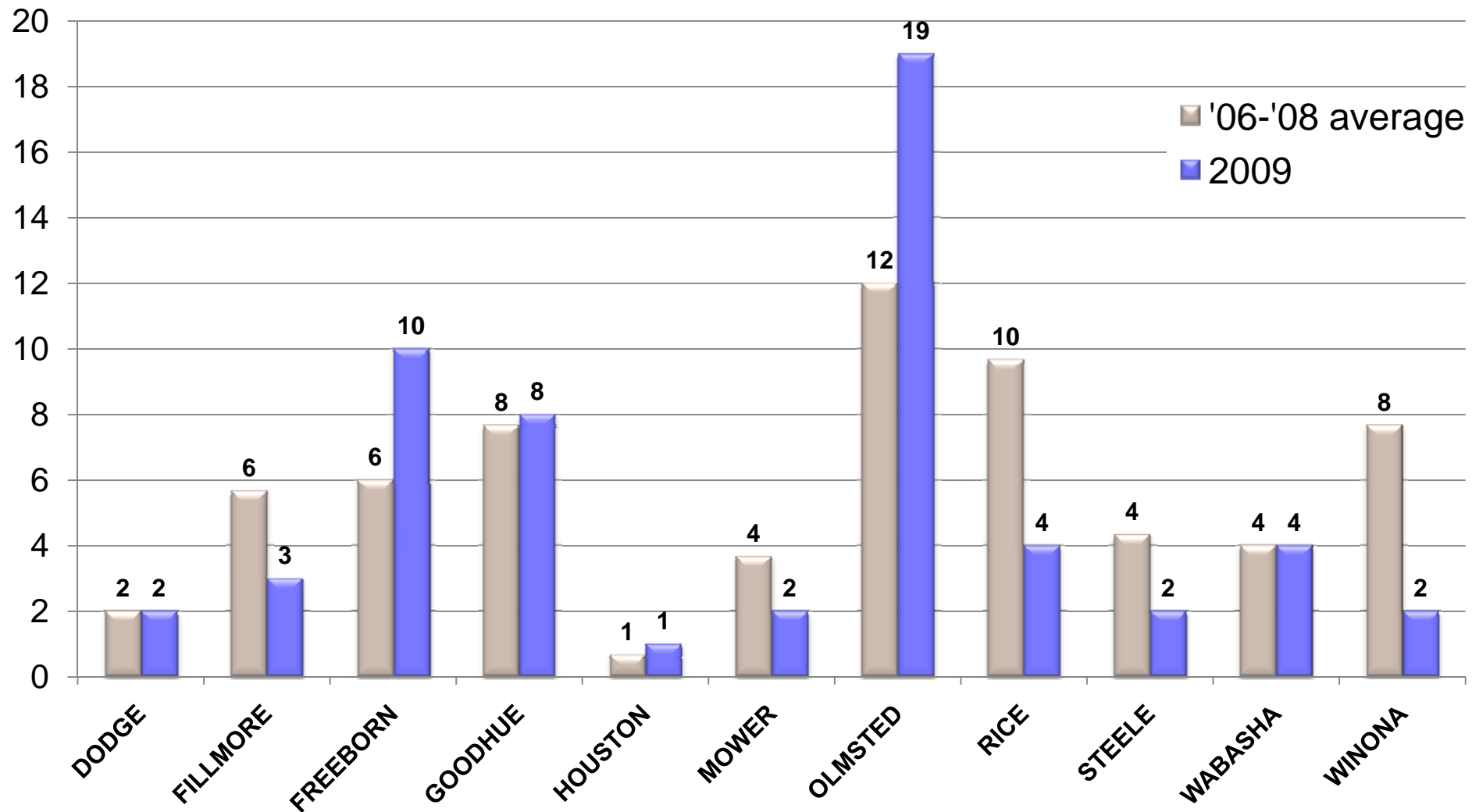
SE 2006-2008

# Region Fatality Rates per 100M Vehicle Miles Traveled by County



# SE 2006 - 2009

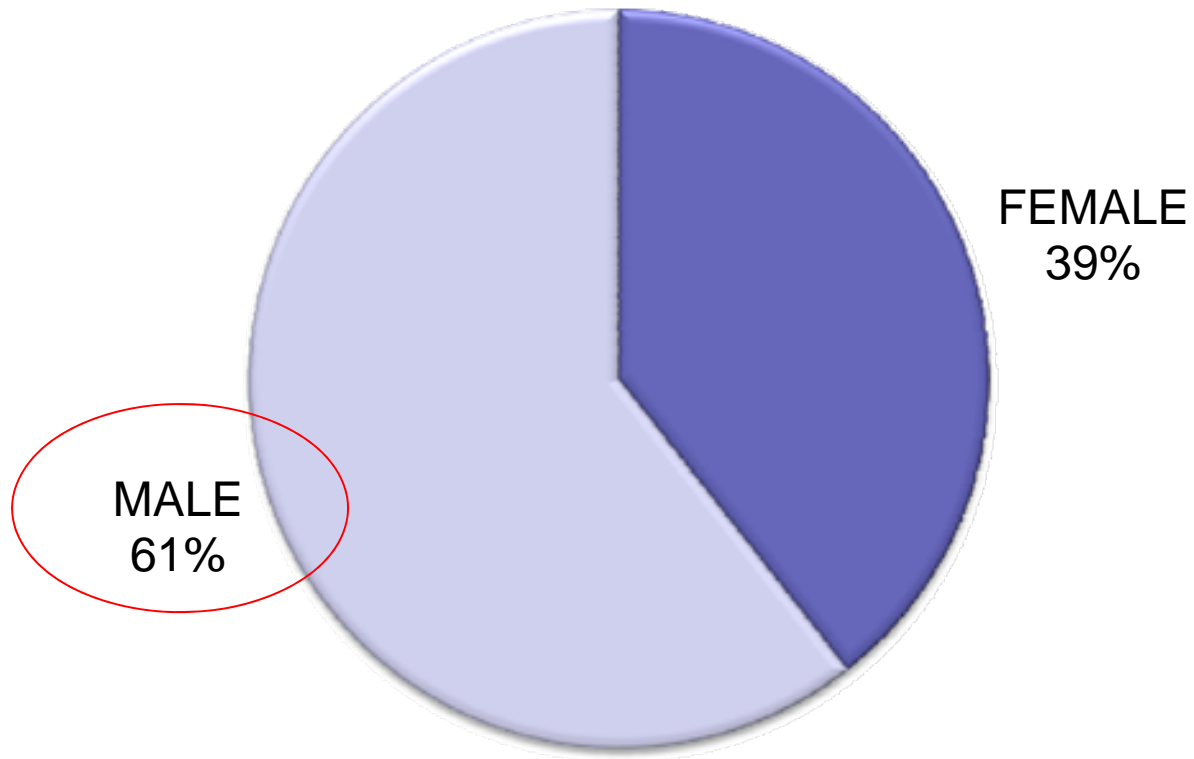
## Region Fatalities By County



# Who is being severely injured or killed?

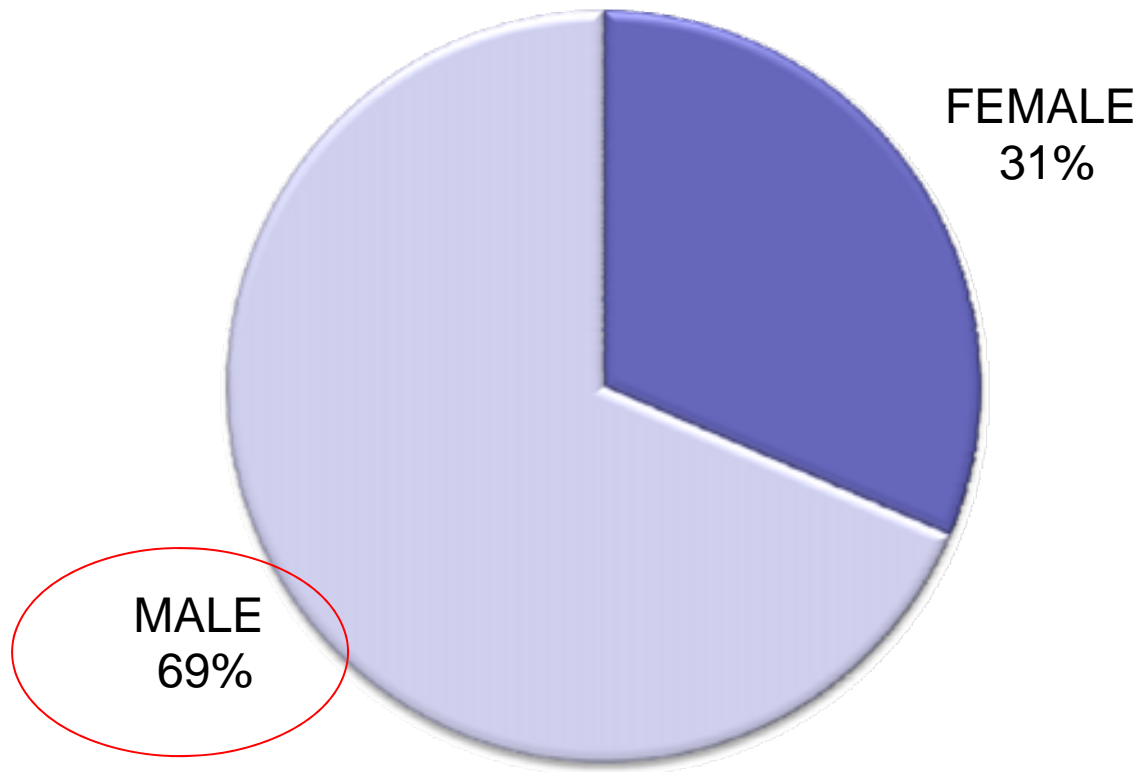


## SE 2007 - 2009 Severe Injuries by Gender



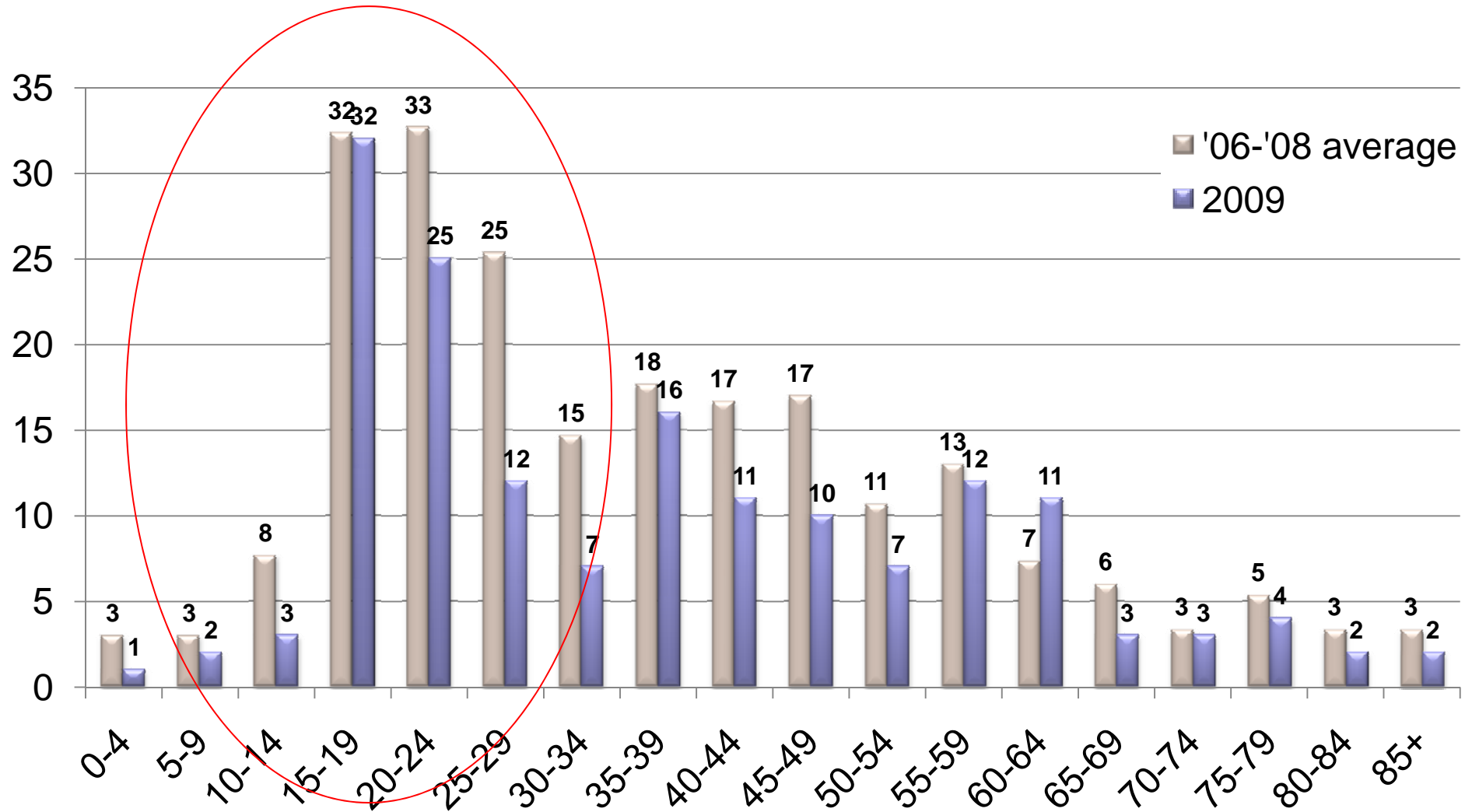


## SE 2007 – 2009 Fatalities by Gender



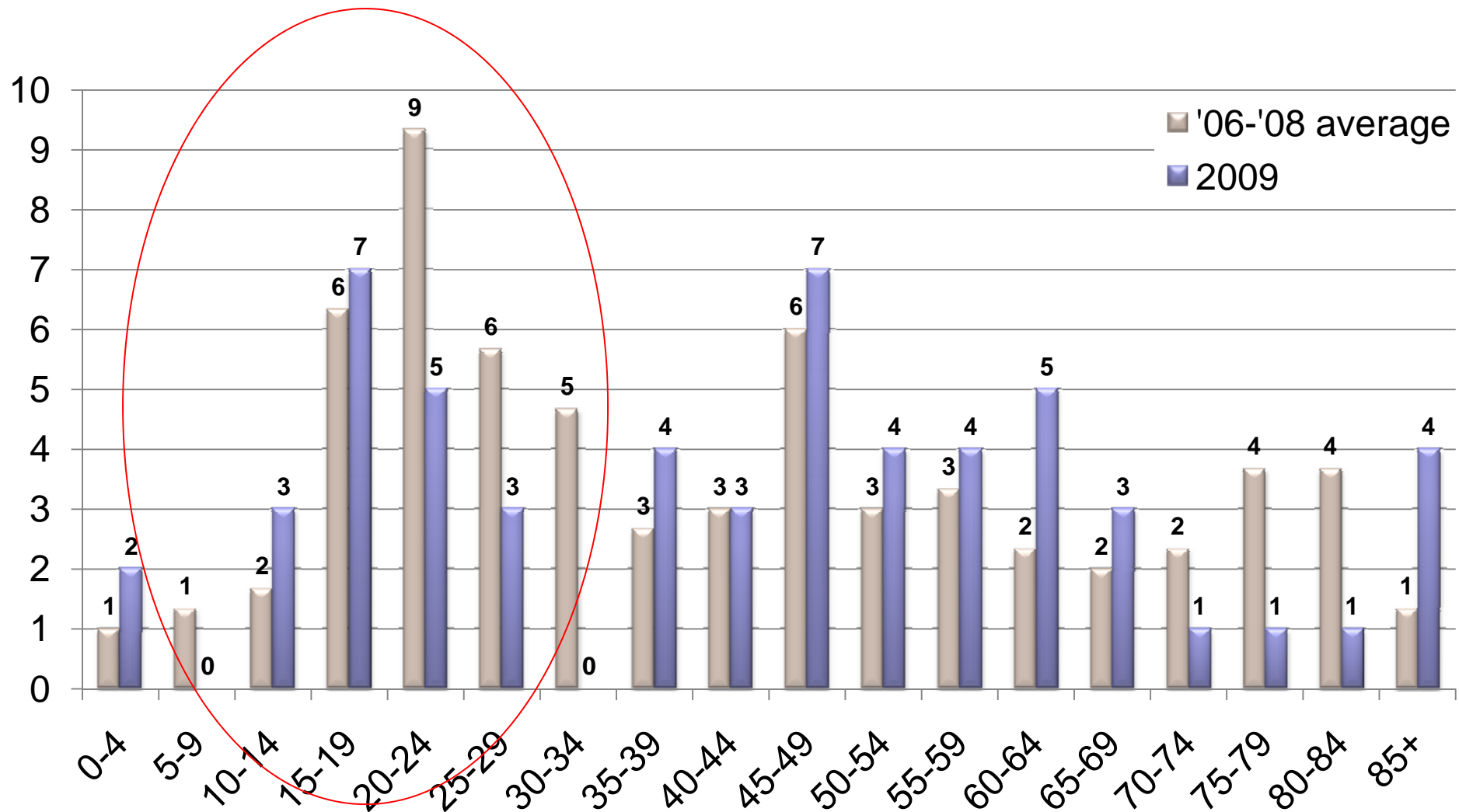
# SE 2006-2009

## Severe Injuries by Age



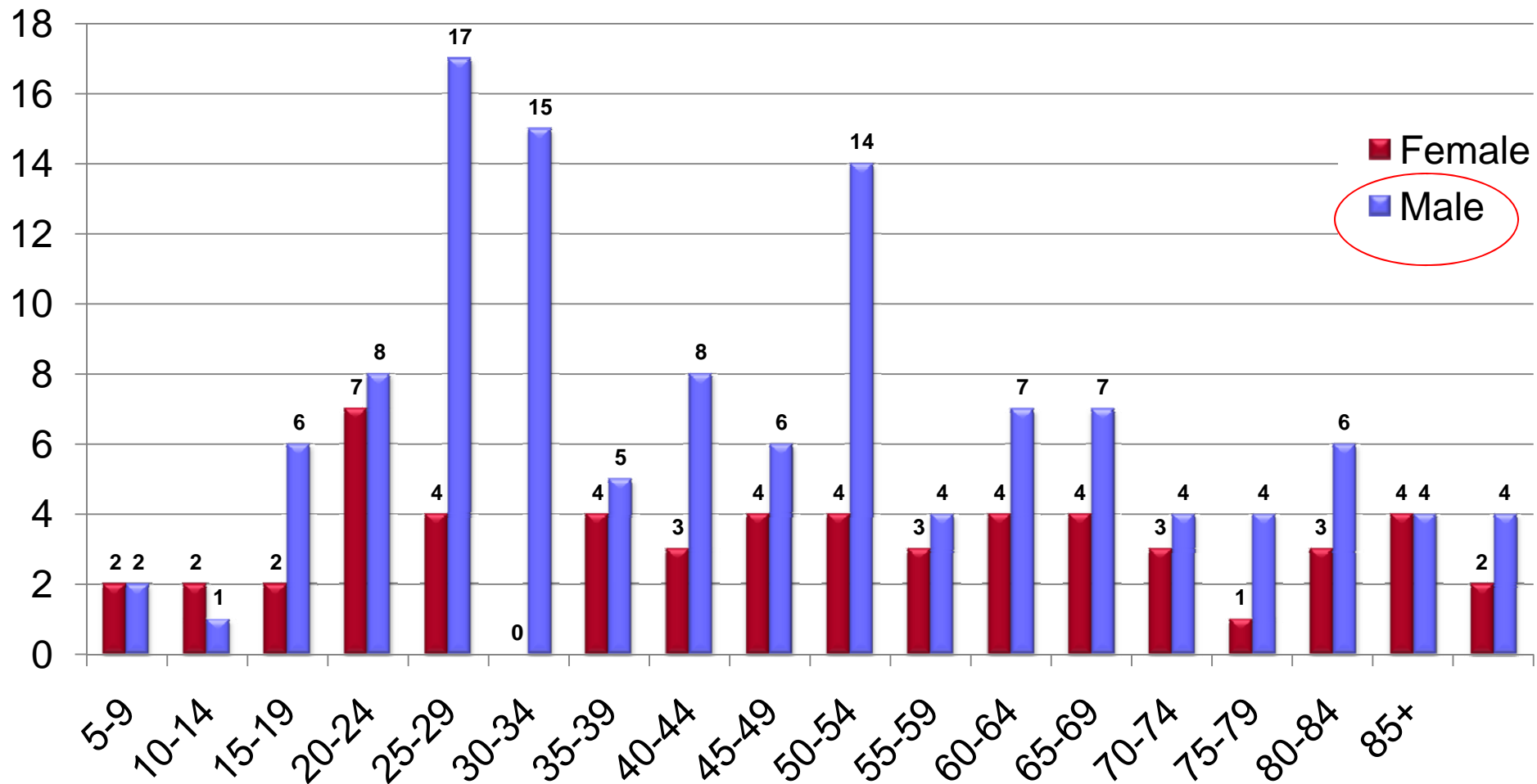
# SE 2006-2009

## Fatalities by Age



# SE 2007 - 2009

## Fatalities by Age and Gender



# When do fatal and severe crashes happen?

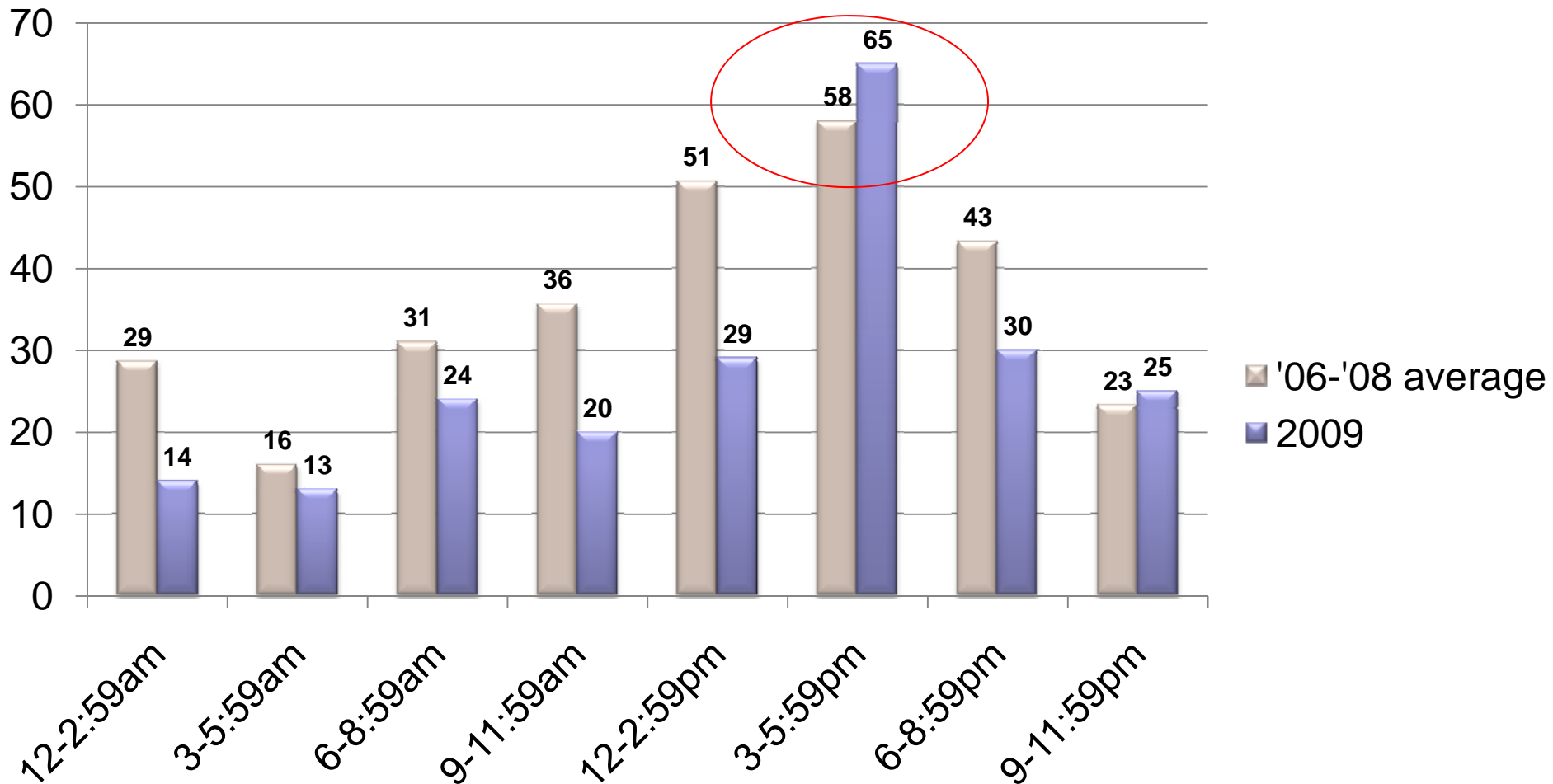
**-Time of day**

**-Month**



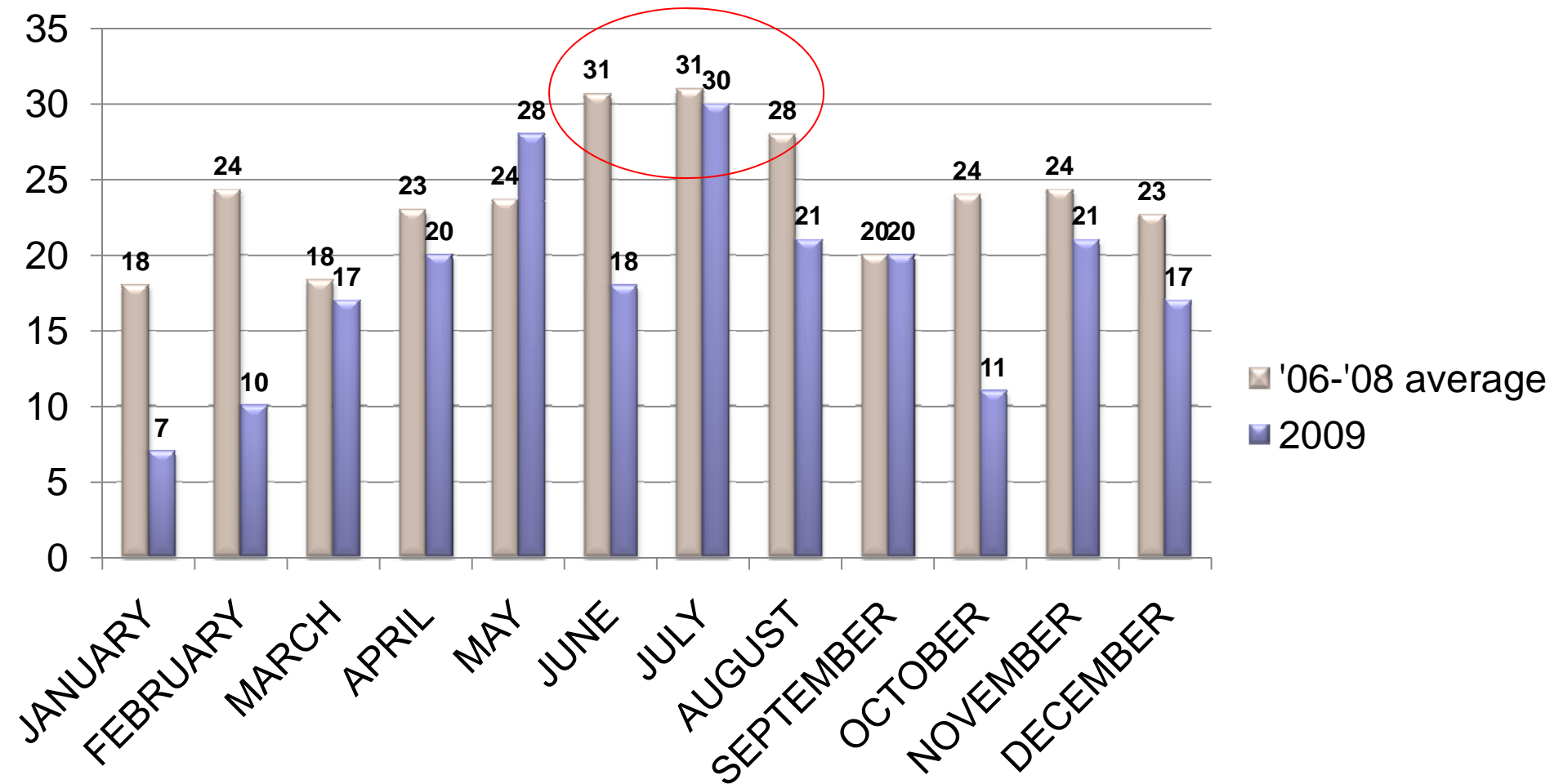
# SE 2006 - 2009

## Fatalities and Severe Injuries by Time of Day



# SE 2006 - 2009

## Fatalities and Severe Injuries by Month



# Which driver behaviors are contributing to crashes?





# SE 2009

## Single Vehicle Crashes

### Contributing Factors by Percent Within Age Group

CONTRIBUTING FACTOR	AGE						
	15-19	20-24	25-29	30-34	35-64	65-79	80+
ILLEGAL/UNSAFE SPEED	25.6	30.0	31.0	29.6	26.9	26.4	19.4
OVERCORRECTING	11.1	10.1	6.9	8.3	5.8	4.1	9.7
DRIVER INATTENTION/DISTRACTION	11.9	10.5	10.5	14.8	13.0	16.2	25.8
DRIVER INEXPERIENCE	16.1	5.0	2.1	4.6	1.8	1.4	0.0
CHEMICAL IMPAIRMENT*	3.7	8.8	9.3	8.8	5.2	1.4	3.2
SKIDDING	9.5	11.3	10.8	9.7	12.1	8.8	0.0

\*Chemical impairment based on officer's perception of possible alcohol involvement as noted on crash report.

SE 2009

## Multiple Vehicle Crashes

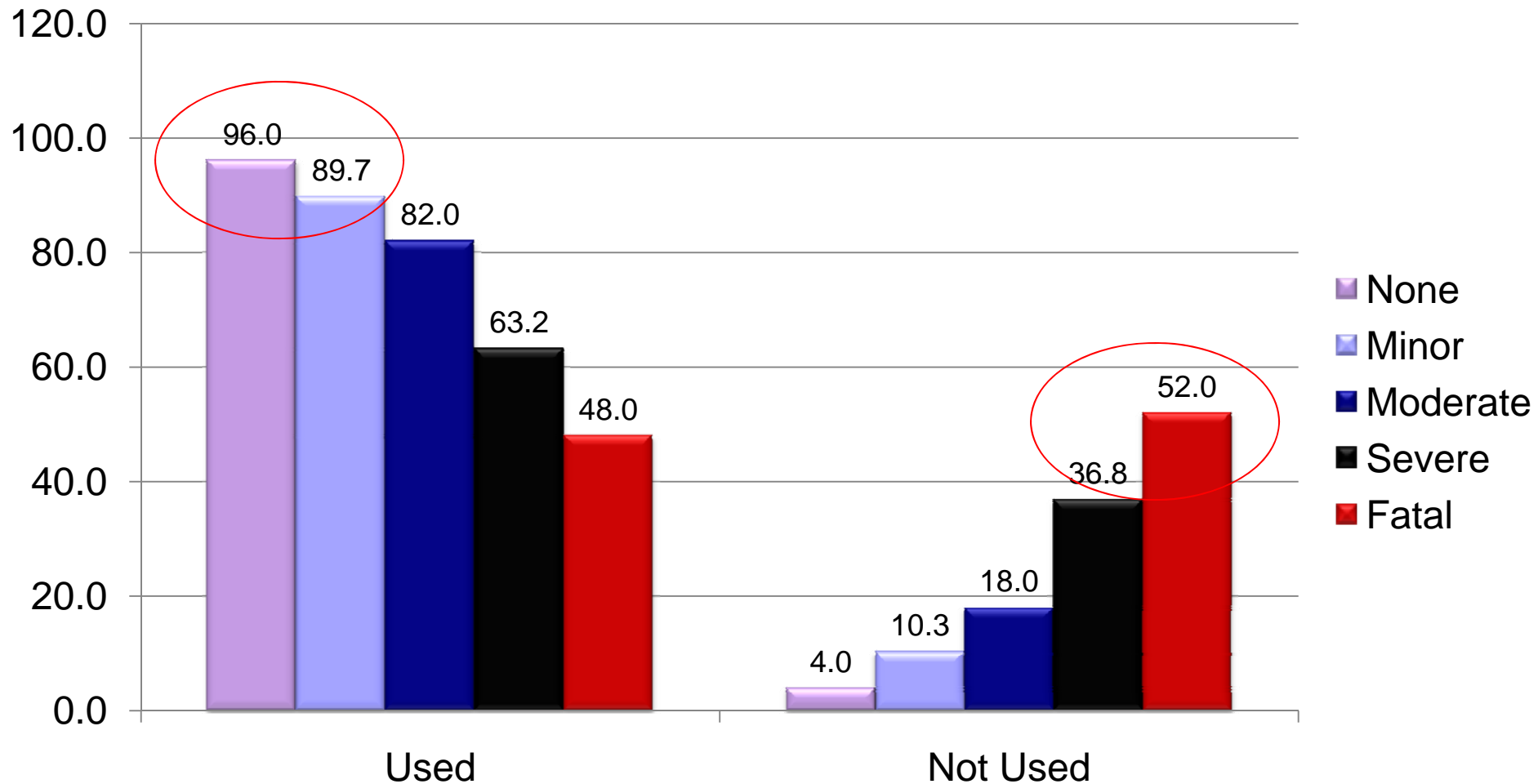
### Contributing Factors by Percent Within Age Group

CONTRIBUTING FACTOR	AGE						
	15-19	20-24	25-29	30-34	35-64	65-79	80+
<b>FAILURE TO YIELD RIGHT OF WAY</b>	23.1	17.9	20.0	19.8	21.1	34.8	43.8
<b>ILLEGAL/UNSAFE SPEED</b>	8.9	13.3	12.1	9.5	7.4	4.7	2.4
<b>FOLLOWING TOO CLOSE</b>	7.1	8.2	6.3	7.8	6.9	3.2	3.3
<b>DISREGARD OF TRAFFIC CONTROL</b>	3.6	3.4	4.9	4.0	3.7	4.5	6.2
<b>DRIVER INATTENTION/DISTRACTION</b>	24.4	23.1	19.3	18.4	21.9	22.5	18.6
<b>UNSAFE BACKING</b>	1.3	1.6	1.6	2.9	3.1	1.4	1.0
<b>CHEMICAL IMPAIRMENT*</b>	0.5	2.3	3.8	2.6	1.8	0.5	0.5

\*Chemical impairment based on officer's perception of possible alcohol involvement as noted on crash report

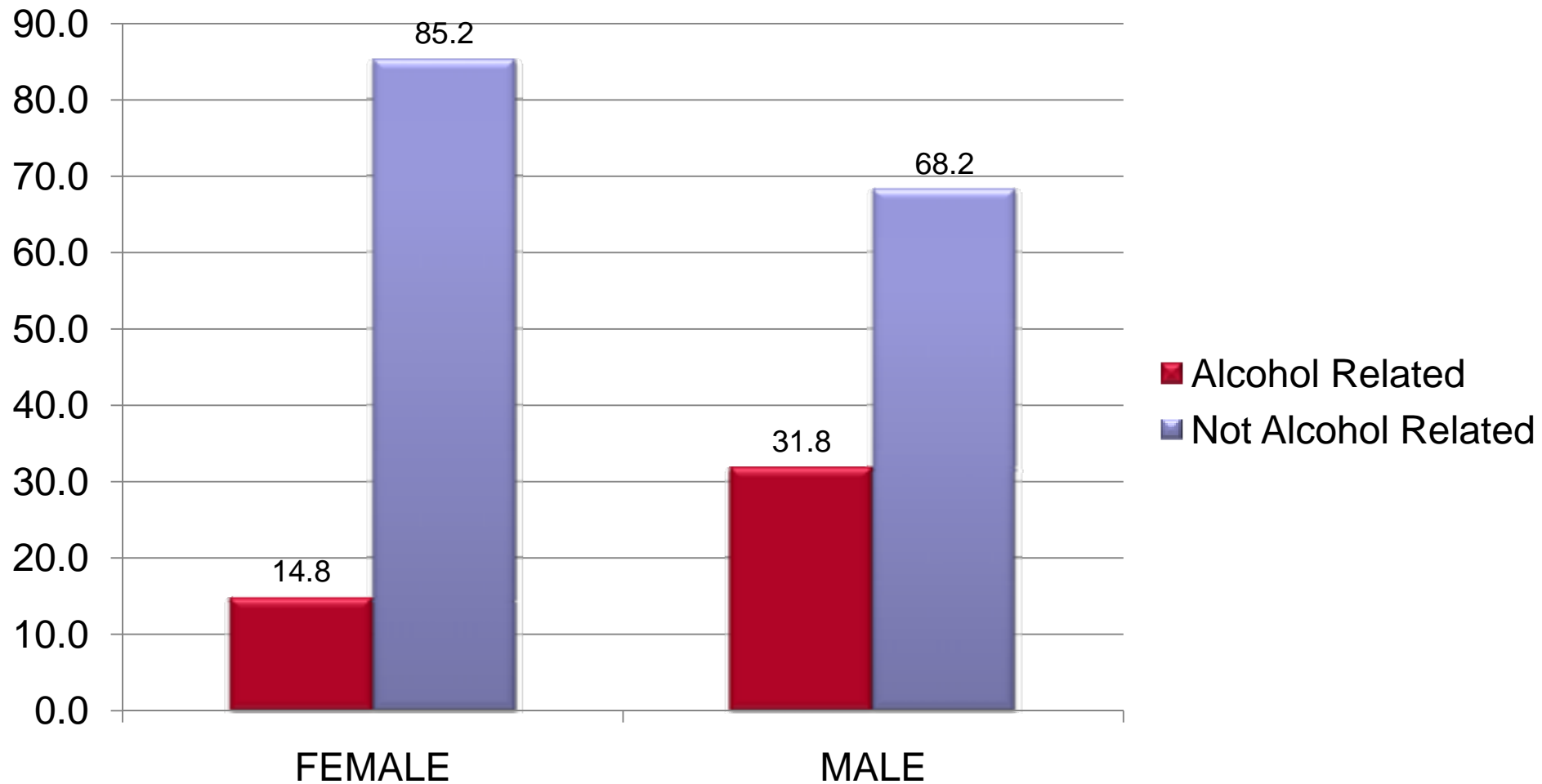
# SE 2007-2009

## Impact of Seat Belt Use on Injury Level



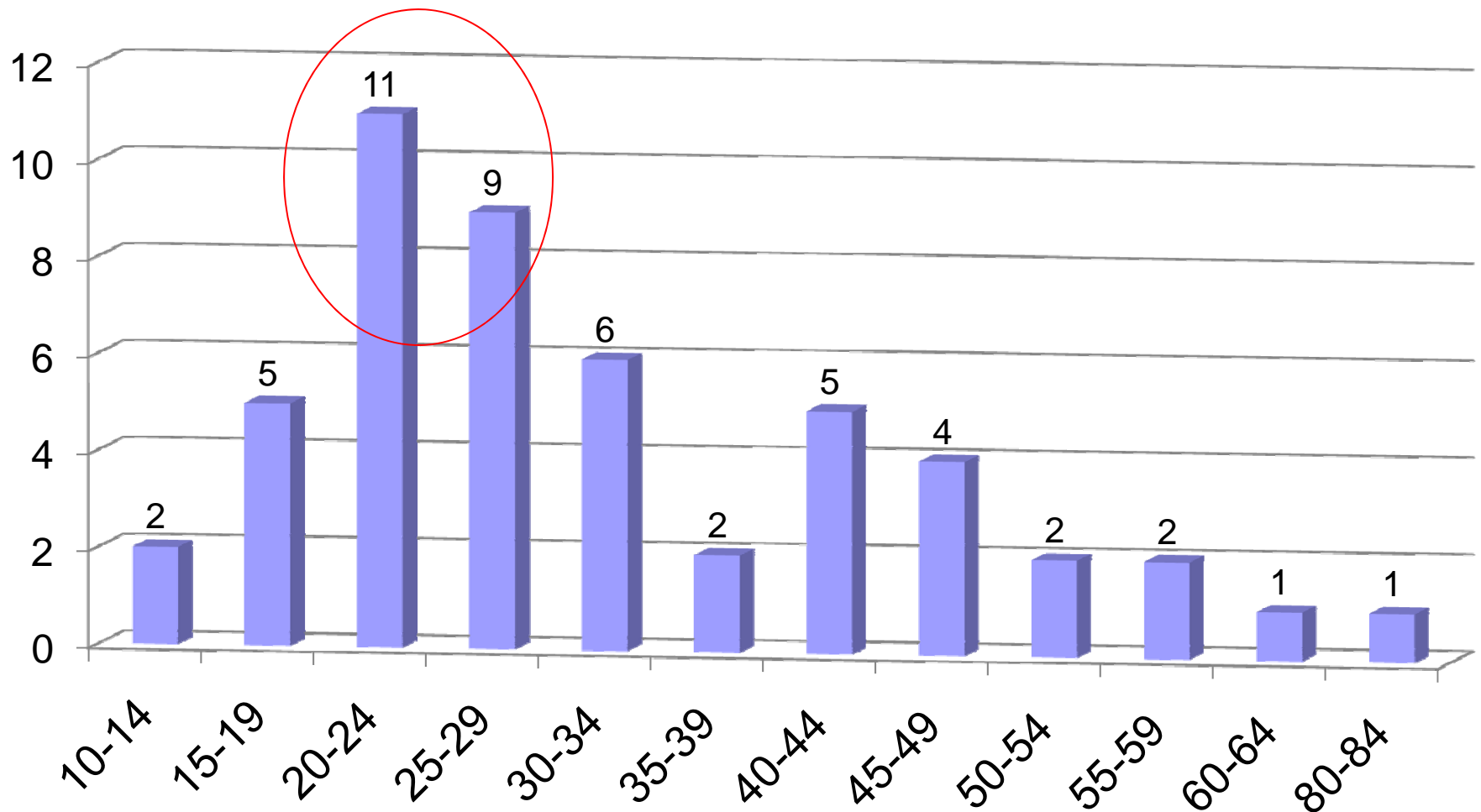
SE 2006-2008

## Percentage of Fatalities Alcohol-Related by Gender



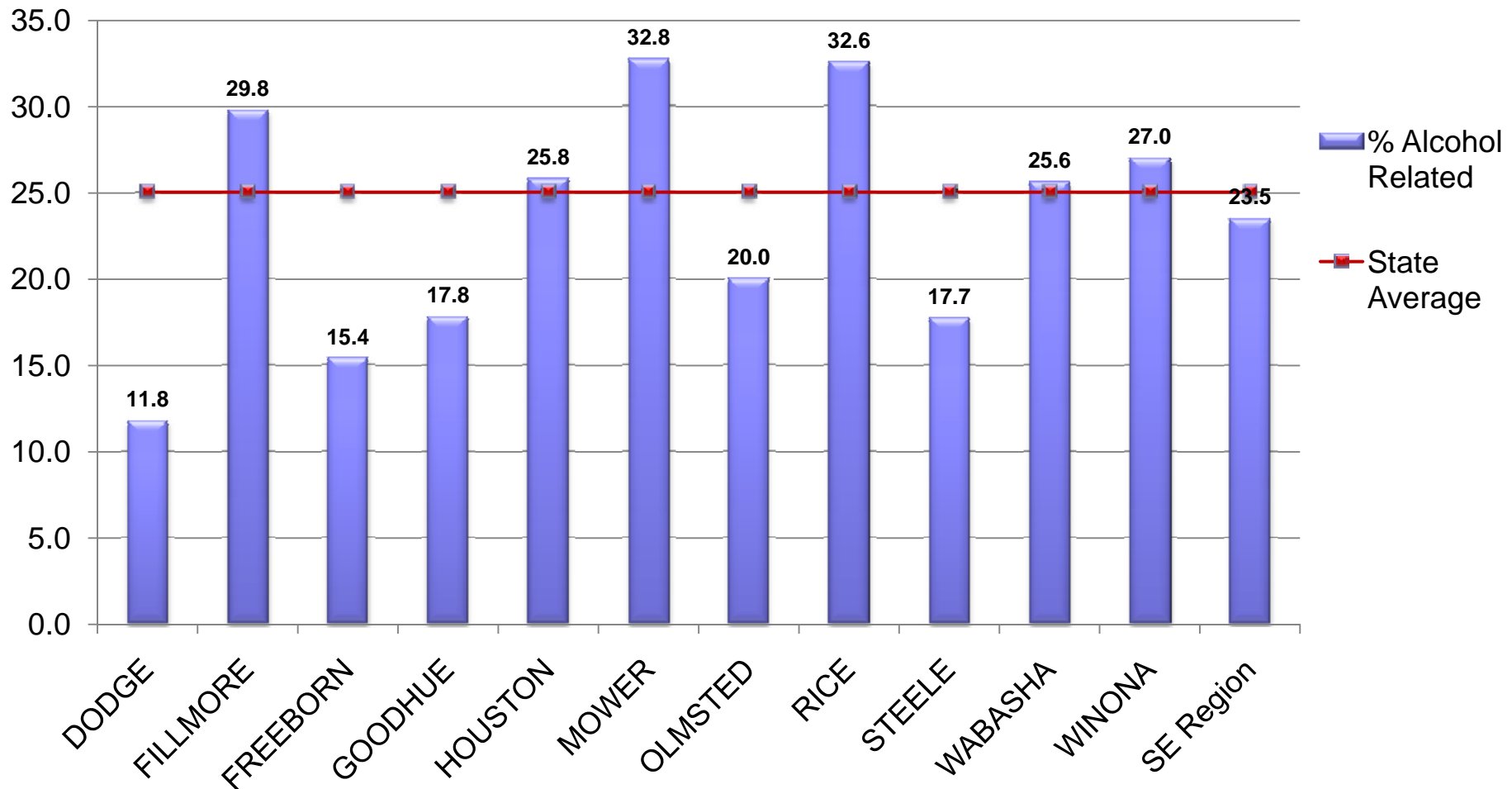
# SE 2006-2008

## Alcohol-Related Fatalities by Age

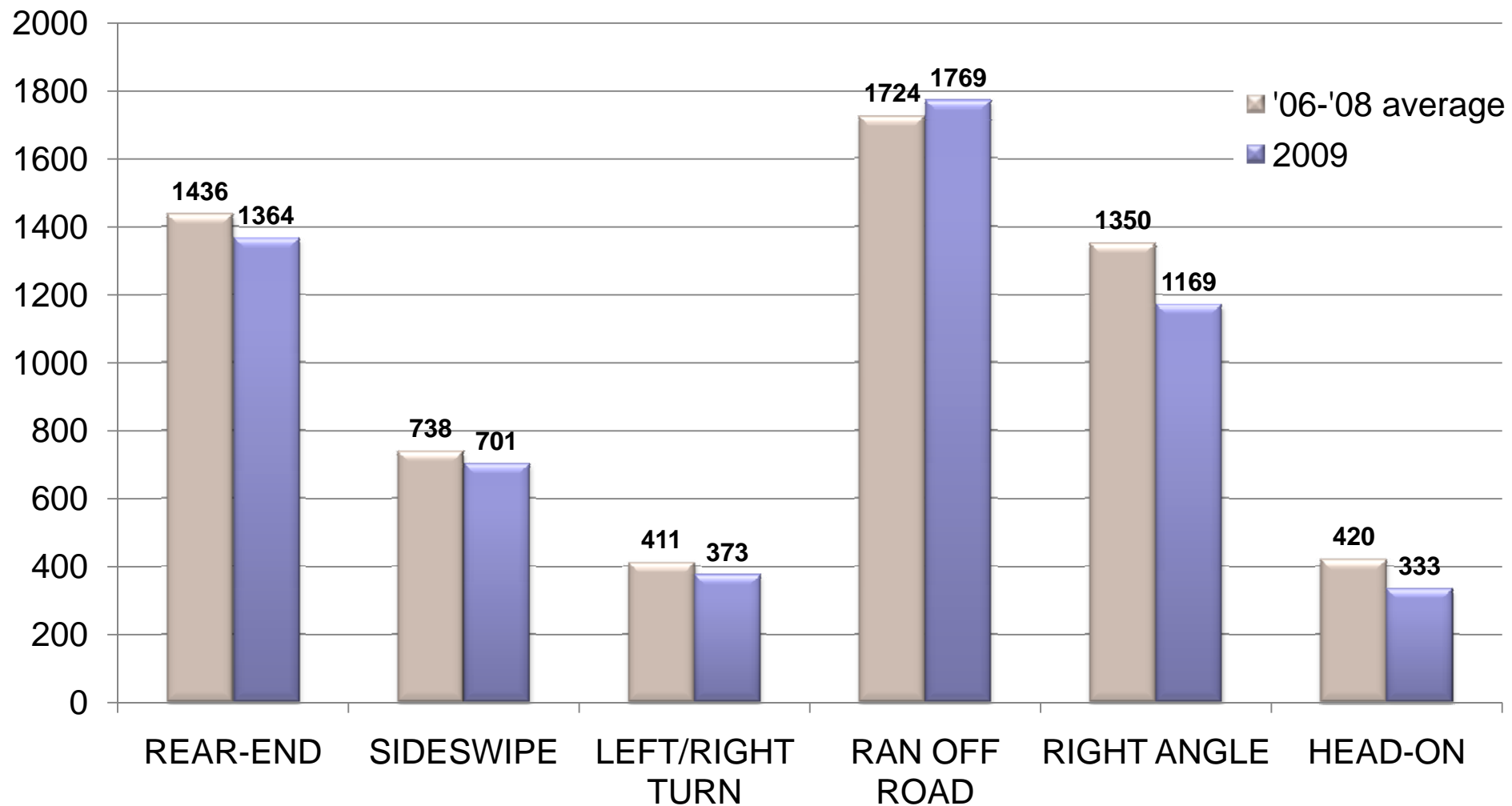


# SE 2006-2008

## Percentage of Fatalities and Severe Injuries Alcohol Related



## SE 2006-2009 Type of Crash

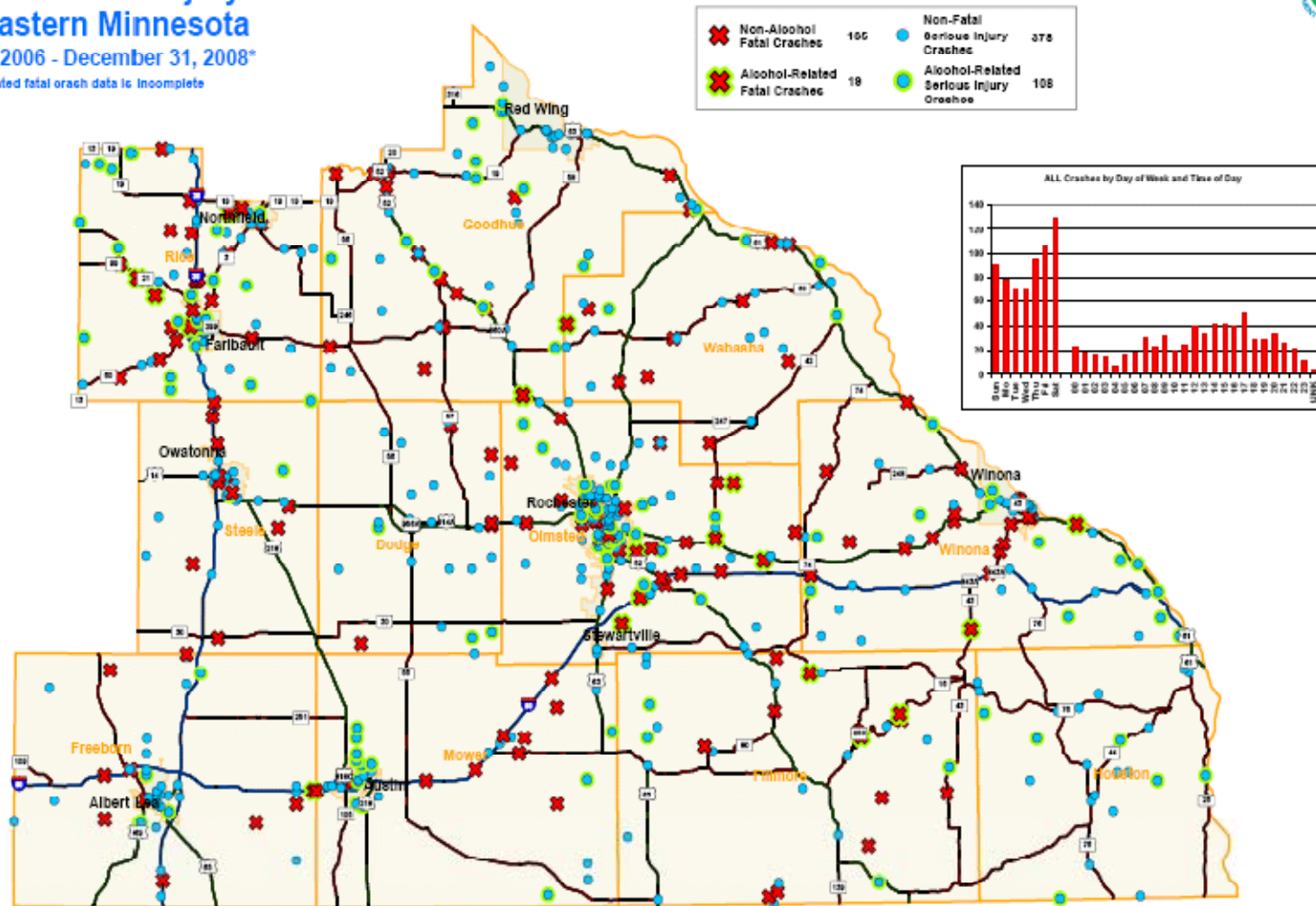


# Where are the crashes taking place?

## Fatal and Serious Injury Crashes Southeastern Minnesota

January 1, 2006 - December 31, 2008\*

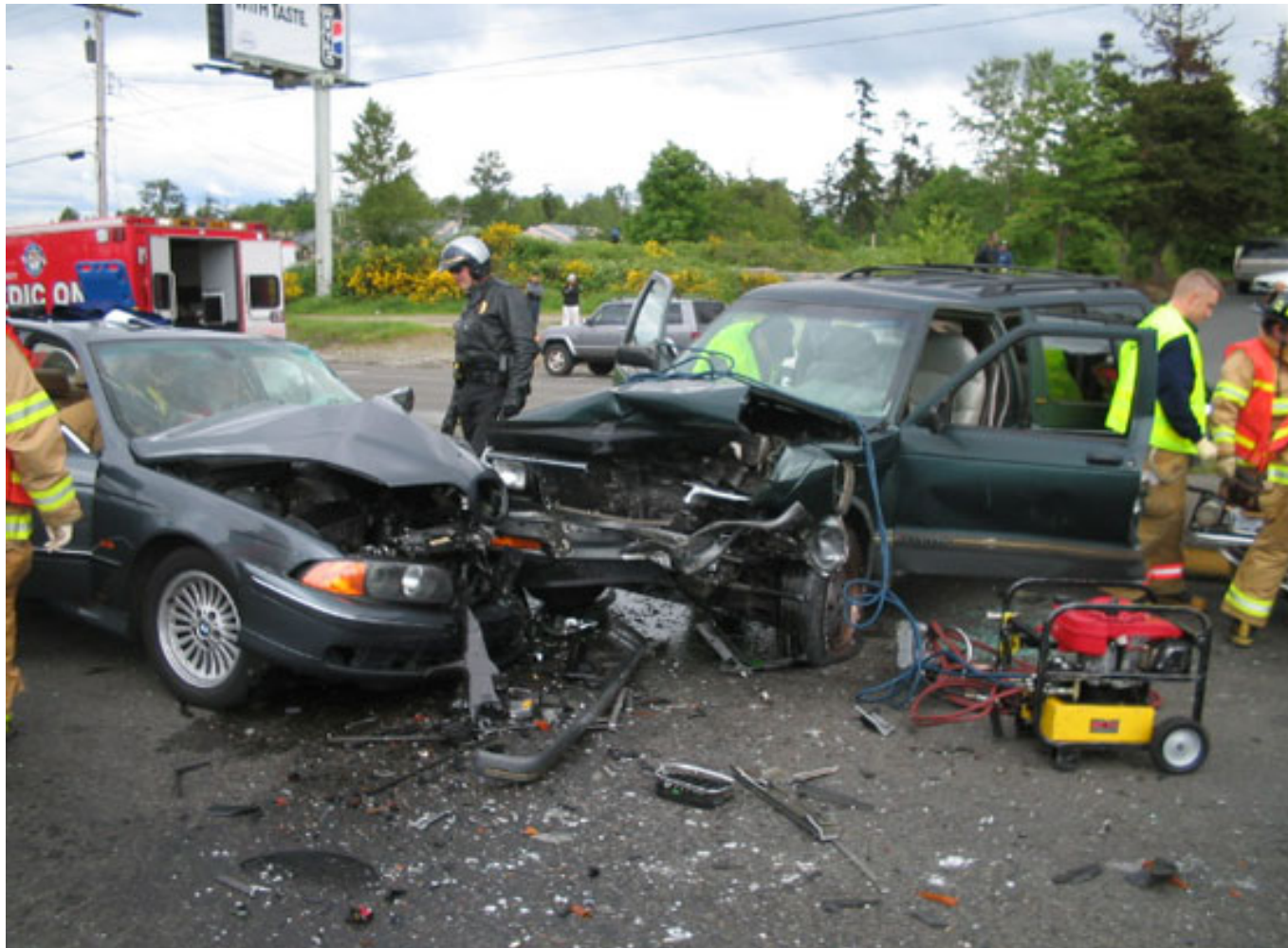
\*2008 alcohol-related fatal crash data is incomplete



Map provided by the Mn/DOT Office of Traffic, Safety, and Technology - May 2009



# How can we prevent these tragedies?





# SE TZD - Key Themes

- Fatalities decreased in Southeast (down 16% from 2008)
- Overall, most fatal and severe crashes occur during the “good weather” months
- Deadliest time of day in SE 3:00pm-6:00pm
- Nearly two-thirds of persons killed and severely injured were males
- One-third of the killed and severely injured were 15-24 years old
- Speeding is a major factor in single vehicle crashes – particularly from 20 to 34 years old
- Male motor vehicle occupants are more likely to be unbelted than female motor vehicle occupants
- 4 times as many male alcohol-related fatalities than female
- Unbelted fatalities and severe injuries cost the region nearly 90 million dollars 2007 – 2009



# Behavioral Targets

- Focus on:
  - ☐ Speed Awareness
  - ☐ Seat belts
  - ☐ Alcohol-related issues
  - ☐ Attentive Driving
  - ☐ Summer months; 3pm-6pm
- Who needs to get the message?
  - ☐ Mostly young males

Thank you.

Office of Traffic Safety

[www.dps@state.mn.us/ots](http://www.dps@state.mn.us/ots)

