



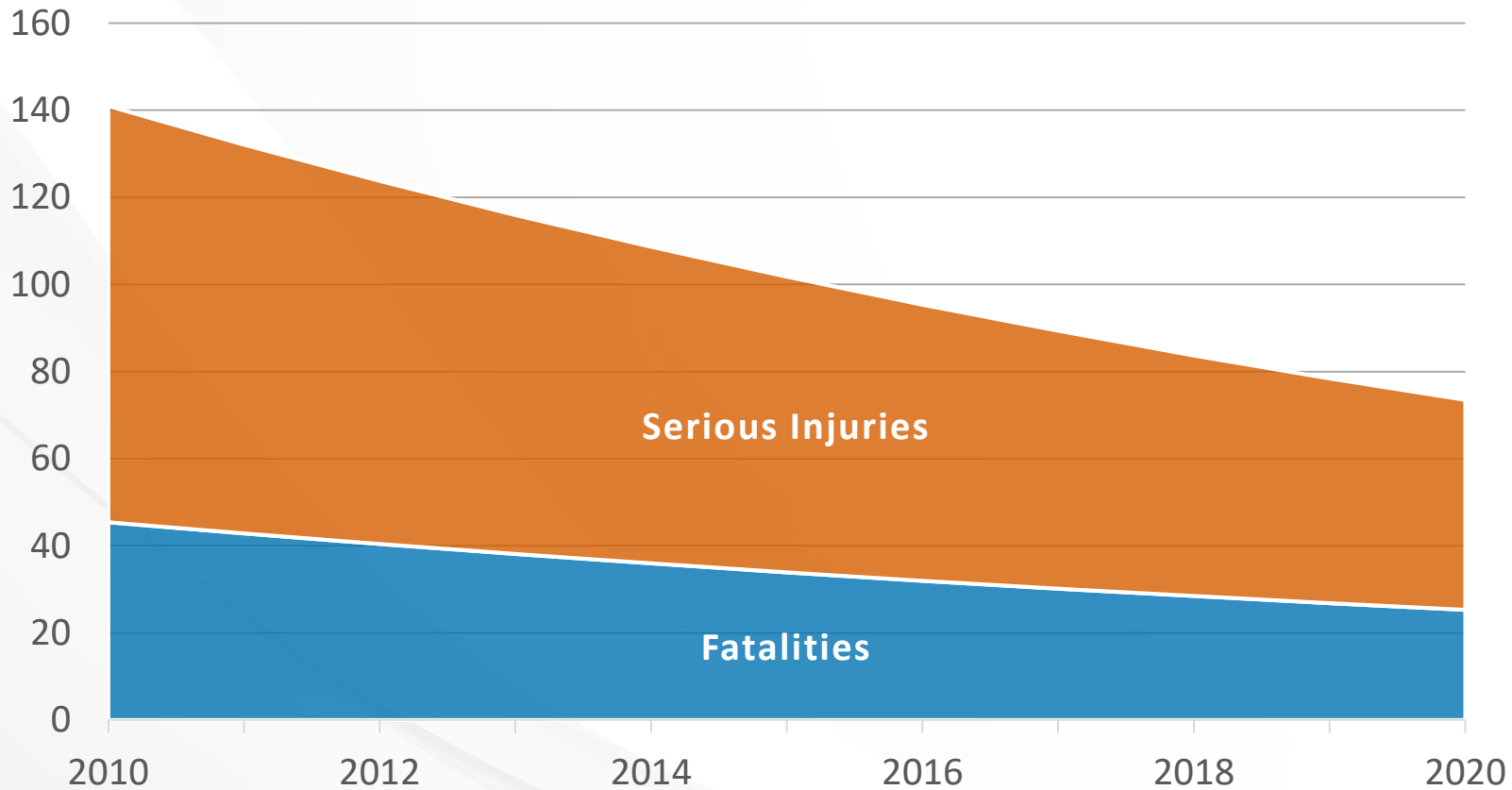
MINNESOTA
TOWARD **ZERO** DEATHS

South Central Minnesota Regional Crash Data

May 4, 2017

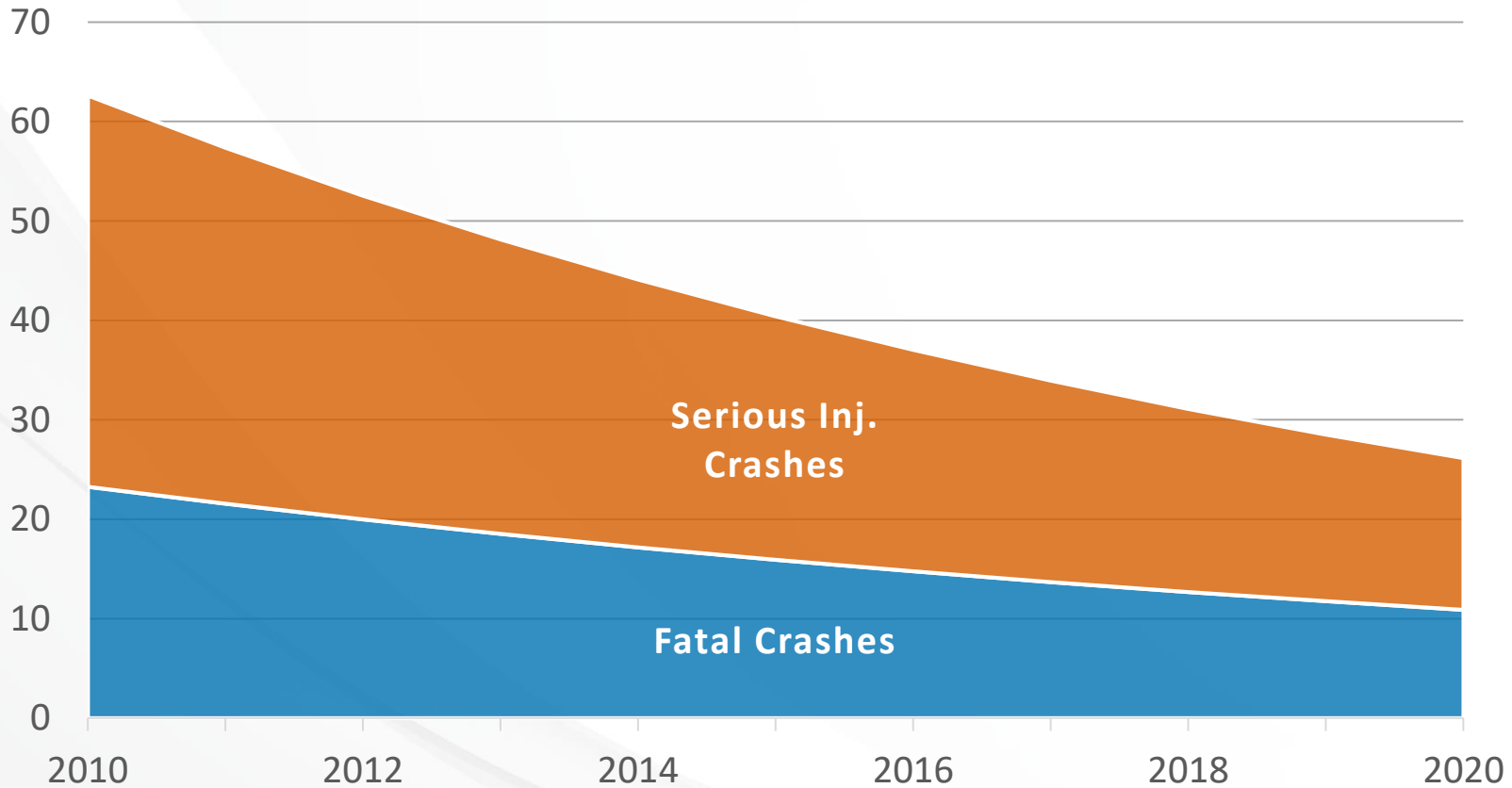
Safety Trends

South Central Region, 2010-2016



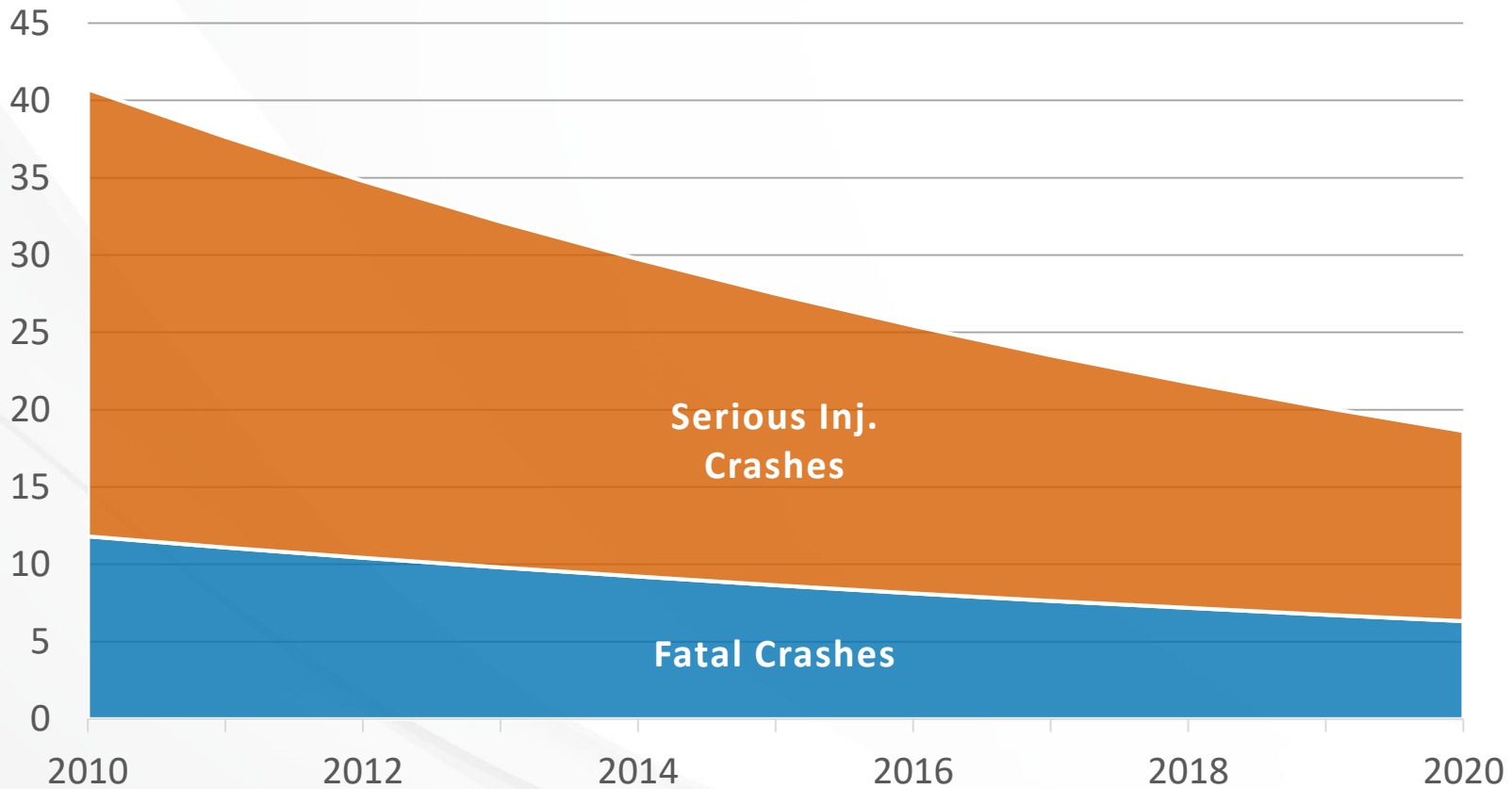
Lane Departure Crash Trends

South Central Region, 2010-2016



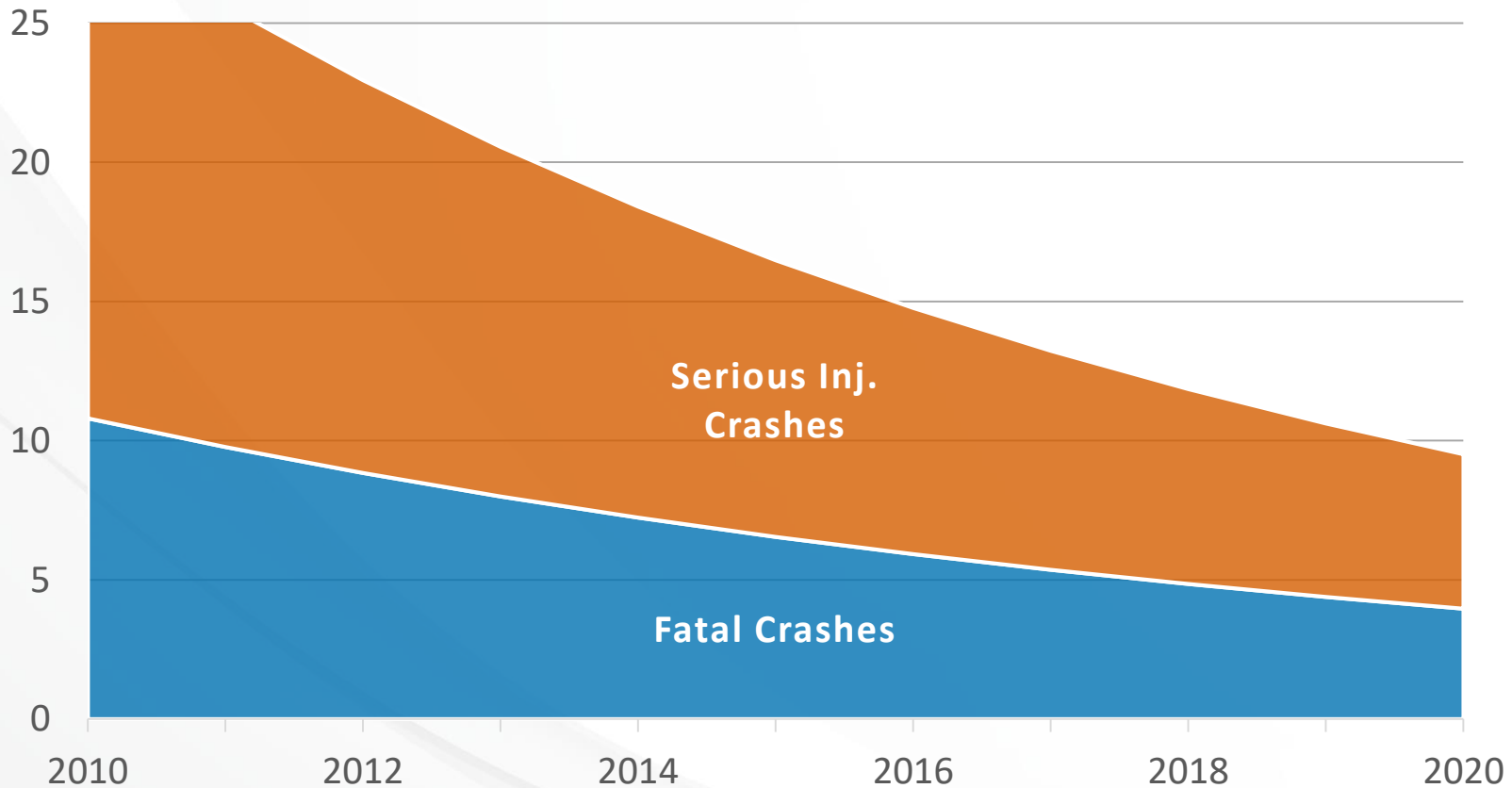
Intersection Crash Trends

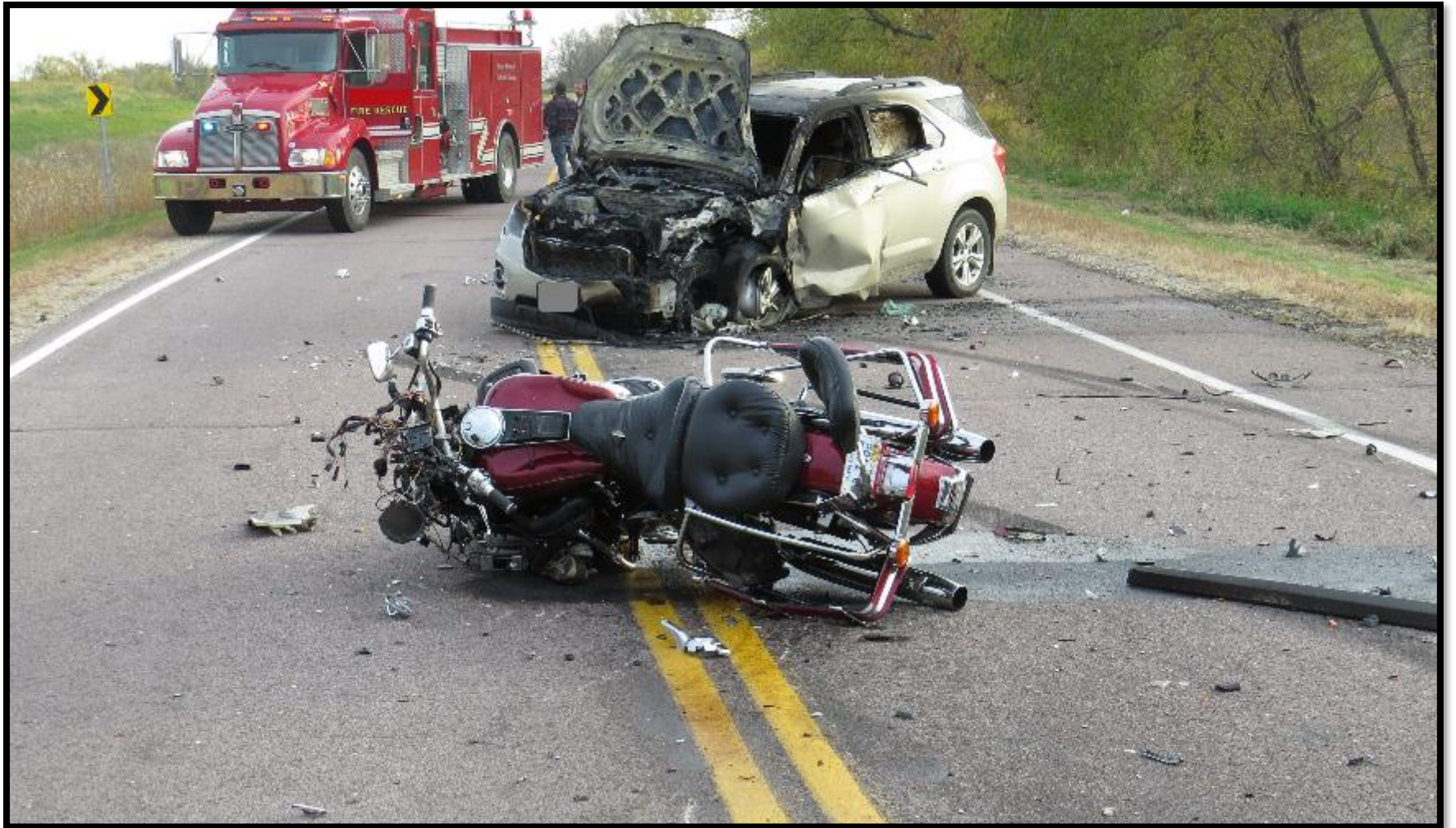
South Central Region, 2010-2016



Alcohol-Related Crash Trends

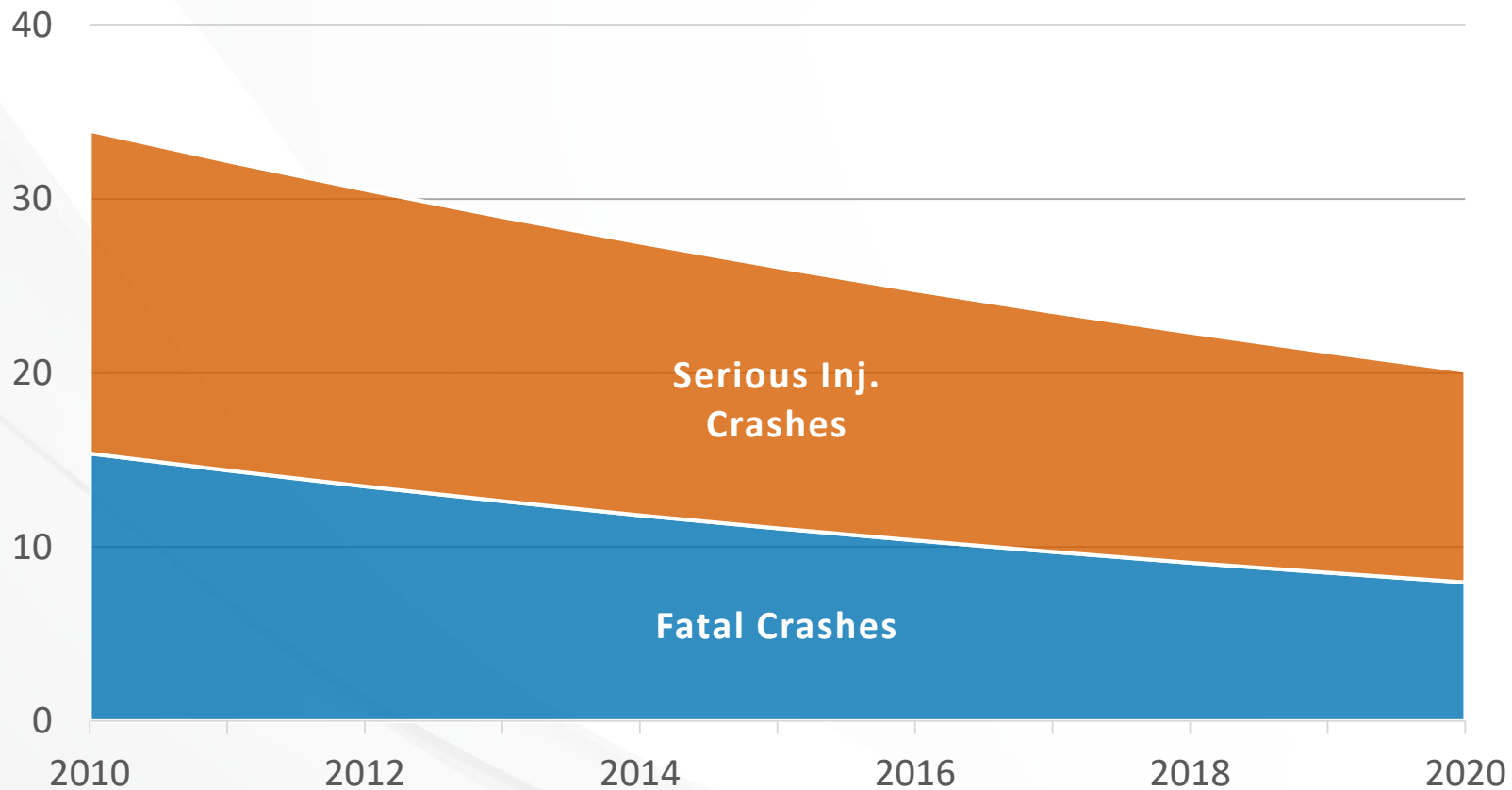
South Central Region, 2010-2016

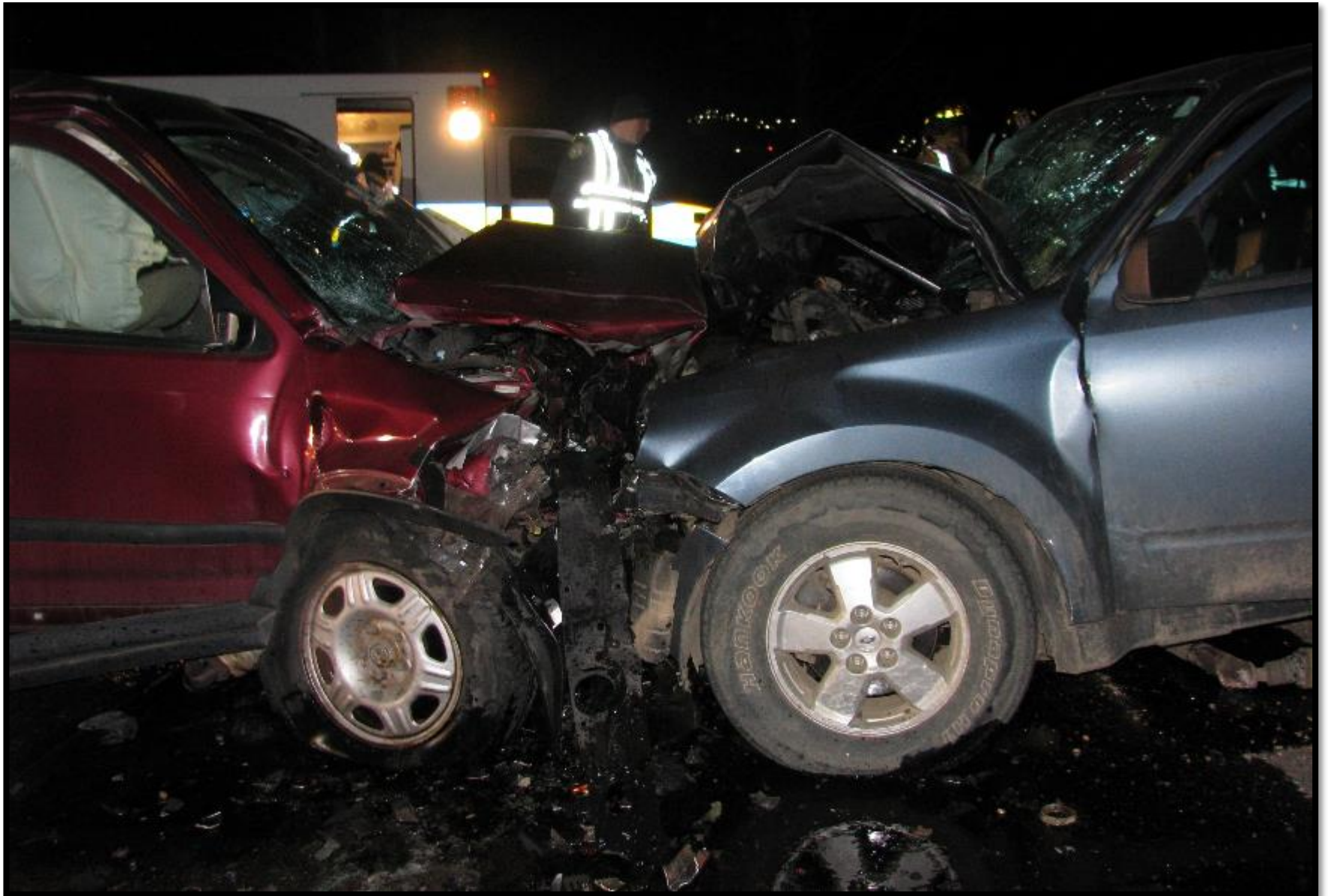




Unbelted Crash Trends

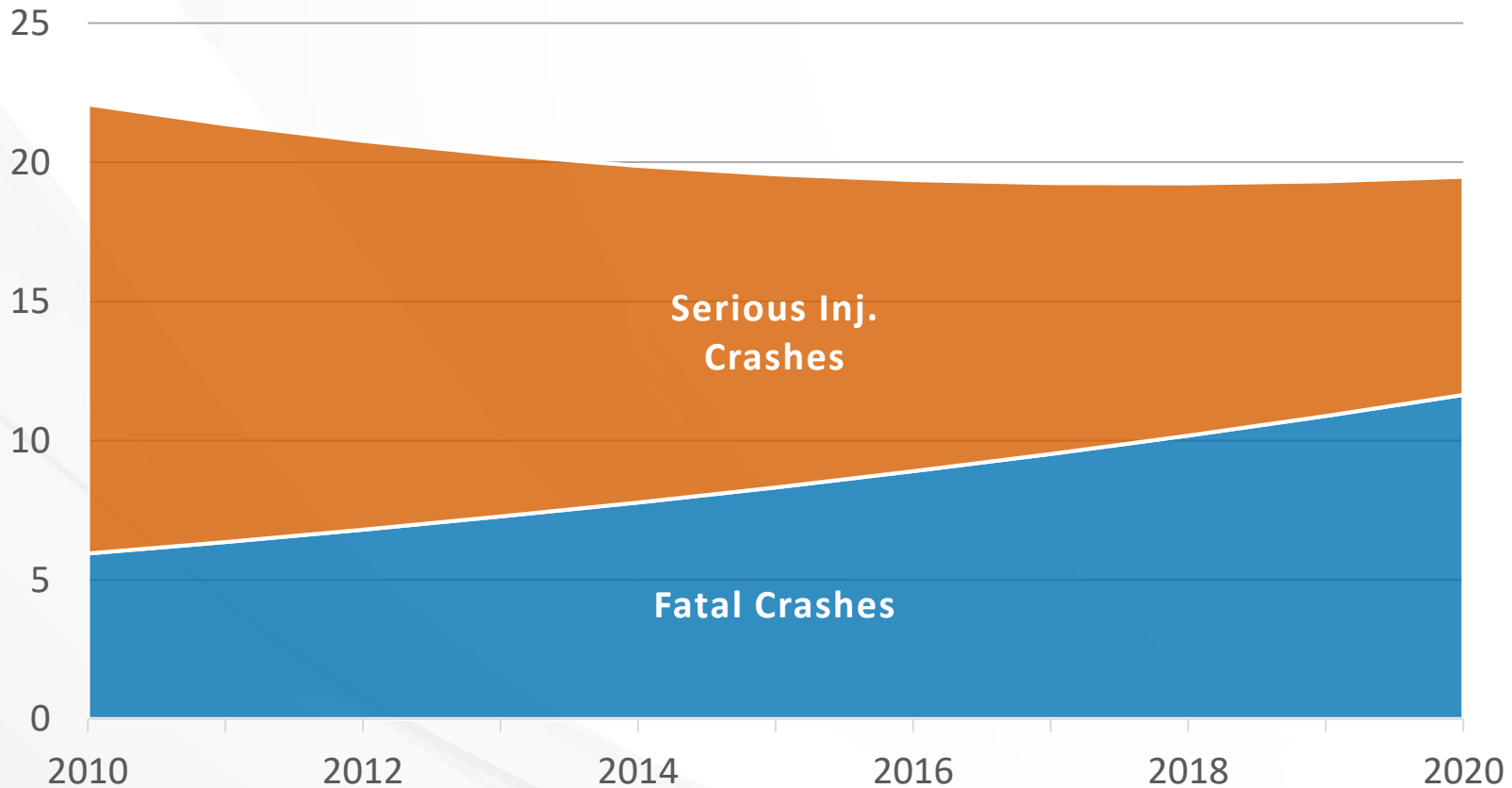
South Central Region, 2010-2016





Speed-Related Crash Trends

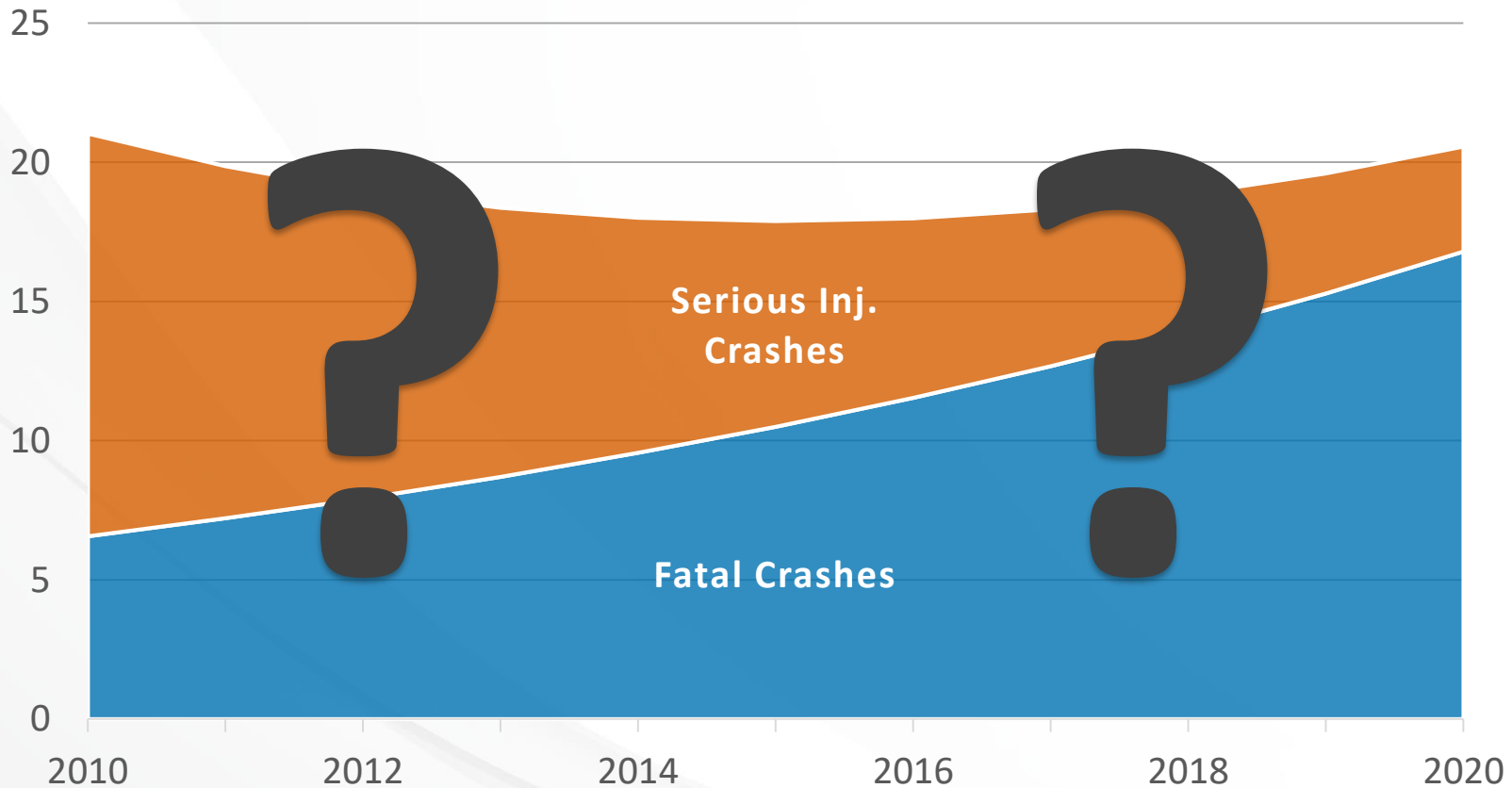
South Central Region, 2010-2016





Distraction-Related Crash Trends

South Central Region, 2010-2016



 medialooks

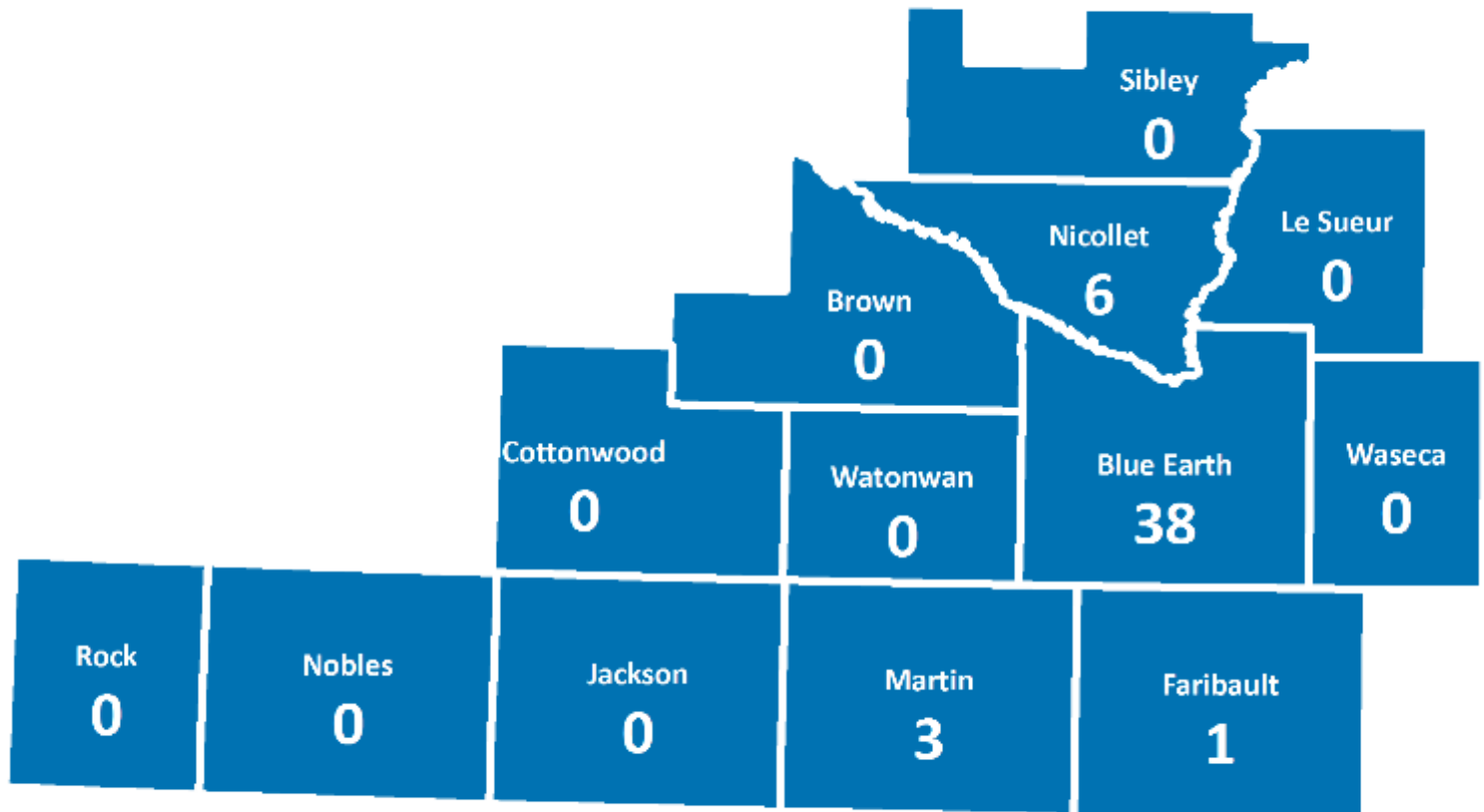


 medialooks



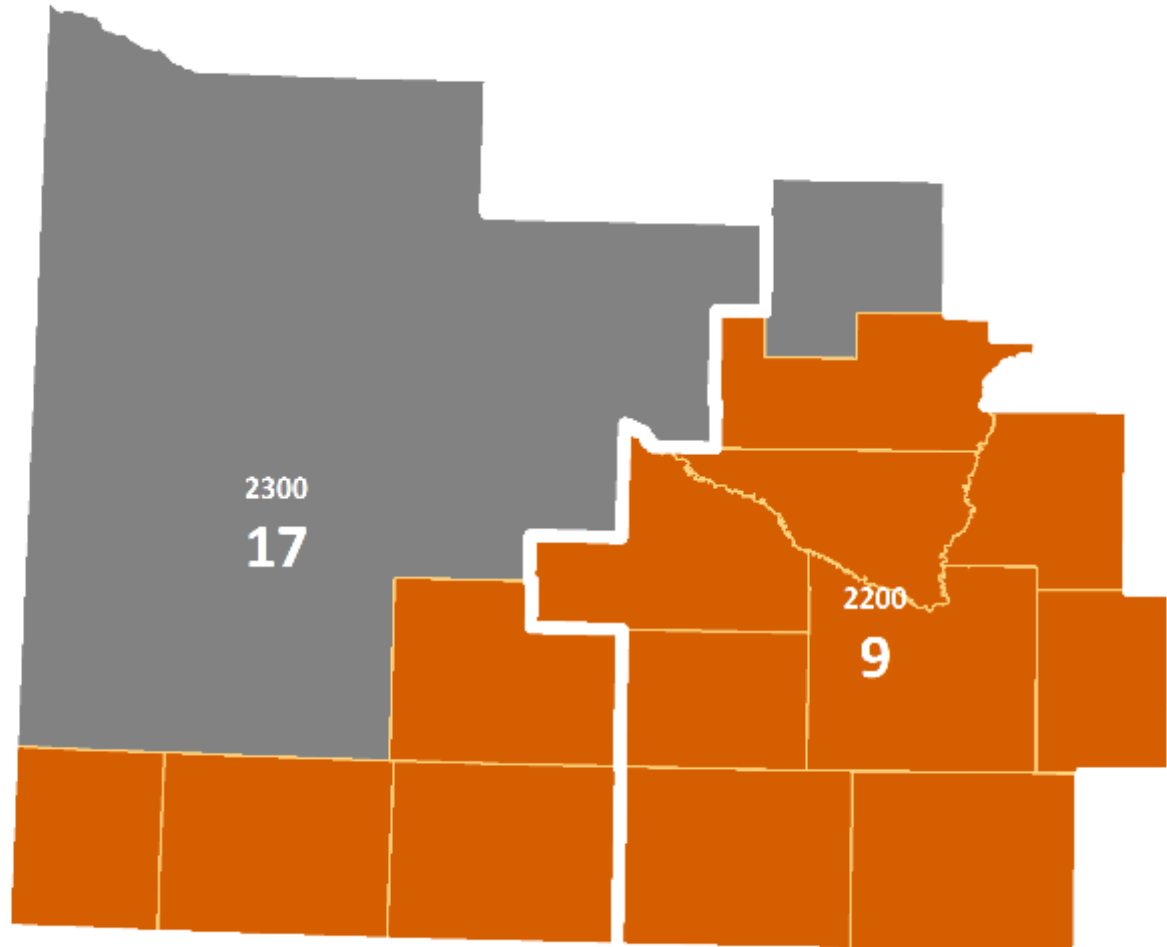
Texting Citations

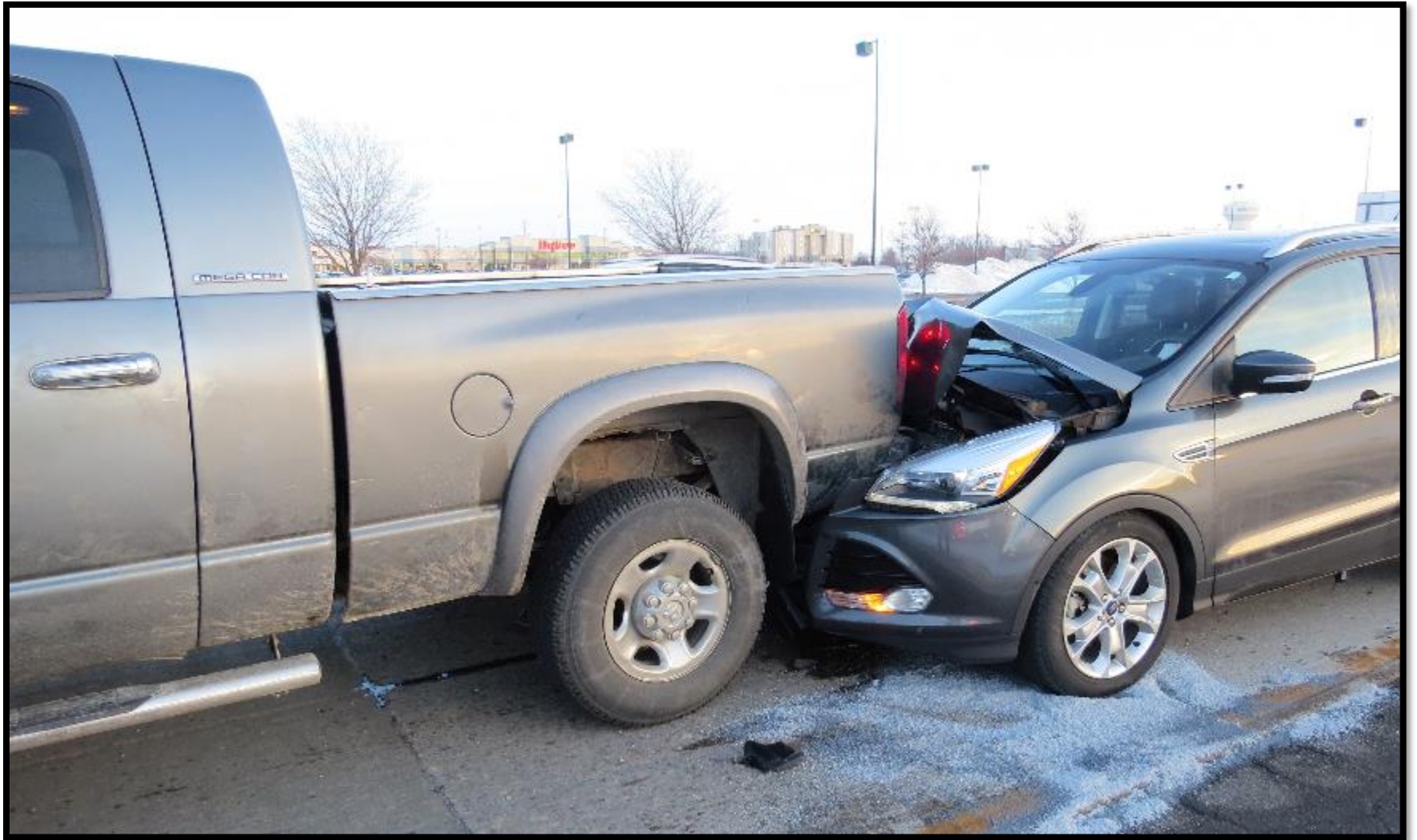
April 11-17, 2016, Grant Funded On-Duty Citations



Texting Citations

April 11-17, 2016, Grant Funded On-Duty State Patrol Citations





South Central Summary

- **The “Big Four” remain a challenge**
 - Impairment
 - Distraction
 - Seat Belt Use
 - Speed
- **Fatalities have leveled off after years of steady decline**
 - How can the Four Es work together to decrease fatalities and serious injuries?

Resources

- **Minnesota Toward Zero Deaths**
 - www.MinnesotaTZD.org
- **Strategic Highway Safety Plan**
 - www.mndot.gov/TrafficEng/Safety/SHSP
- **Minnesota Crash Facts**
 - <https://dps.mn.gov/Divisions/OTS>

Social Media!

*Dave Boxum, Public Information officer,
Office of Communications DPS*

and

*Jennifer Longaecker, Communications
Manager, DPS*

