

**South Central Minnesota Toward Zero Deaths
6th Annual Regional Workshop Agenda
Best Western Convention Center
2101 South Broadway St., New Ulm**

May 4, 2017

- 8 a.m. **Registration, Continental Breakfast, View Exhibits & South Central Regional TZD Accomplishments**
- 8:30 a.m. **Welcome** – *Greg Ous, District engineer, MnDOT District 7*
- 9 a.m. **Regional TZD Crash Facts overview** – *Captain Jeremy Geiger, Minnesota State Patrol*
- 9:15 a.m. **Social media!** – *Dave Boxum and Jennifer Longaecker, Public Information officers, Dept. of Public Safety, Office of Communications*
Follow us... Like us... What's this mean? How can we do that? With all the social networking going on, how do we get our traffic safety messages out to the target audience? Learn from the communication experts on social media. Find the answers to your questions on Facebook, Twitter, Instagram and so many more new social media tools! This session will provide real-life examples of how these emerging networks are being used for traffic safety campaigns, news conferences and other initiatives.
- 10 a.m. **Break, Exhibits & South Central Regional TZD Accomplishments**
- 10:15 a.m. **Breakout sessions**
- **TZD 101** – Whether you are just starting to think about developing a coalition or looking for ideas of what other areas have done, then you should attend this highly interactive breakout session. Gather “intel” on free resources and learn how to use tools available in the South Central TZD region. Representatives from Minnesota Safety Council, MADD, South Central EMS, Office of Traffic Safety Communications as well as local coalition coordinators will share their expertise.
Room: Pre-function area and outdoors
 - **Navigating the DWI eCharging & eWarrants Process**
Mike Asleson, DWI deployment coordinator, Bureau of Criminal Apprehension and Gary Kalstabakken, product manager, Dept. of Public Safety. Learn what's new with DWI eCharging, electronic search warrants and the DWI dashboard. Geared towards law enforcement, this session covers the arrests of impaired drivers. And, coming this spring, is eWarrants – which allows an officer to do electronic warrants in less time. In addition, the DWI Dashboard shows mapping of DWIs, along with severe injuries and fatal crashes, so law enforcement can see where they should focus their resources.
Room: Gallery 1 and 2

- 10:15 a.m. **Breakout sessions continued**
- **Engineering 201 – Back by popular demand!**
Brett Paasch, EIT, traffic engineer, MnDOT District 7, will share resources and explain the basic tips, latest tools and best practices for improving roadway safety from an engineer’s perspective.
Room: Gallery 3
- 11:15 a.m. **Critical Incident Stress Debrief**
Mark Griffith, executive director, South Central Minnesota EMS Corporation
"Critical incident stress" is the emotional and sometimes physical response that most people experience in a traumatic event, such as a fatality or severe injury. Learn why you should participate in a debrief session and how to cope with incidents, both now and long-term.
- 12:15 p.m. **Lunch, Exhibits & South Central Regional TZD Accomplishments**
- 1 p.m. **Powerful Dreams Inspire Powerful Action**
Annette Larson, South Central Minnesota TZD regional coordinator
You have the power to change our traffic safety culture! Challenge the “keep on, keeping on.” Report back on 2016 action plans. What can we accomplish for 2017?
- 2 p.m. **The Challenges of Drowsy Driving**
Julie Hatleli, RN, BSN, Mayo Clinic Health System Regional Sleep Disorder Center
Most drivers have found themselves tired or falling asleep while driving. Drowsy driving is not just falling asleep at the wheel – it is a profound impairment that mimics alcohol-impaired driving in many ways. Learn how key sleep disorders and chronic disease play a part in drowsy driving and what we can do about it.
- 2:30 p.m. **“Hands on the Wheel, Eyes on the Road: In Memory of Joe Tikalsky”** – Sylvie (17-yr-old granddaughter) and Greg Tikalsky (Joe Tikalsky’s son) will share their personal story on how driver decisions have impacted not only their own life, but also the entire community, when a distracted driver killed Joe while he was getting his mail.
- 3 p.m. **Wrap up & Adjourn** – *Greg Ous, District engineer, MnDOT District 7;*
Capt. Jeremy Geiger, Minnesota State Patrol

Please take time throughout the day to visit the traffic-safety exhibit tables for reference materials and ideas to implement in your communities.

**SOUTH CENTRAL TOWARD ZERO DEATHS REGIONAL WORKSHOP
EVALUATION FORM**

Best Western Convention Center, New Ulm, MN
May 4, 2017

Please take a few minutes to complete the following survey. Your comments, opinions and suggestions are very important to us. With your feedback we can better understand the needs of our participants and ensure the quality of future programs.

Please evaluate how informative and interesting the sessions were to you by placing a check in the box that best describes your opinion.

General Sessions	Excellent (4)	Good (3)	Fair (2)	Poor (1)	Did Not Attend
Welcome					
Regional TZD Crash Facts Overview					
Social Media!					
Critical Incident Stress Debrief					
Powerful Dreams Inspire Powerful Action					
The Challenges of Drowsy Driving					
“Hands on the Wheel, Eyes on the Road: In Memory of Joe Tikalsky”					
Wrap Up and Adjourn					

Comments on the general sessions: _____

Please check the box for the breakout session that you attended:

- TZD 101
- Navigating the DWI eCharging & eWarrants Process
- Engineering 201
- I did not attend any of the breakout sessions.

Please evaluate the following aspects of the breakout session that you attended by placing a check in the box that best describes your opinion.

Breakout Sessions	Excellent (4)	Good (3)	Fair (2)	Poor (1)
Format and length				
Topics covered were timely and useful				
Content was appropriate and helpful				
Facilitator was knowledgeable and managed the group well				

Comments on the breakout session that you attended: _____

Please evaluate the following aspects by placing a check in the box that best describes your opinion.

Workshop Arrangements	Excellent (4)	Good (3)	Fair (2)	Poor (1)	N/A
Convenience of the registration process					
Location of the venue.					
Facilities were comfortable and appropriate.					
Food served for meals and breaks was satisfying.					
Participant materials were helpful and useful.					
How useful are the mounted regional crash maps?					

Comments on the arrangements: _____

Do you have suggestions for topics you would like to see offered at future workshops? _____

What are your suggestions for building and maintaining support for this region's Minnesota TZD initiative? _____

Any other comments or suggestions are welcome.

*Thank you for your time.
Please return your completed evaluation to the registration table
or fax to Shannon Engstrom at (612)625-6381.*

5/4/2017 - South Central Workshop Exhibitor Roster

	Organization	First Name	Last Name	Email	Phone	Business Address	City	State	Zip	Organization website
1	Mayo Clinic Medical Transport	Meghan	Lamp	lamp.meghan@mayo.edu	507-696-1515	1216 Second Street SW	Rochester	MN	55905	
2	North Memorial Air Care	Sandy	Turbes	Matthew.jakubik@northmemorial.com	763-581-9928	4501 68th Ave. N.	Brooklyn Center	MN	55430	http://www.northmemorial.com/aircare
3	SC/SW TZD Regional Coordinator	Annette	Larson	annette.l.larson@state.mn.us	507.304.6110	2151 Bassett Dr	Mankato	MN	56001	
4	Department of Public Safety, Office of Traffic Safety	Scott	McConkey	smconkey@hickorytech.net	507-720-2041		St. Clair	MN	56080	
5	Minnesota Safety Council	Lisa	Kons	lisa.kons@minnesotasafetycouncil.org	651-228-7330	474 Concordia Avenue	St. Paul	MN	55103	www.minnesotasafetycouncil.org/nets

Count 5

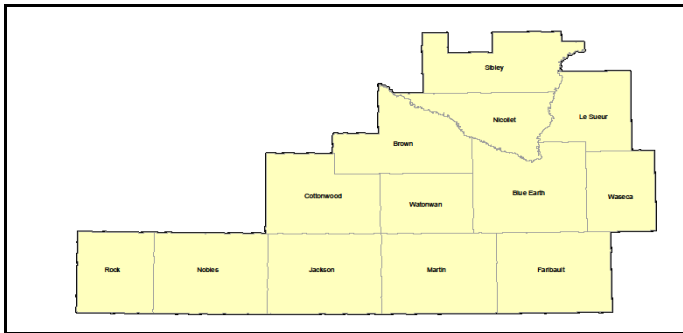
South Central Minnesota Toward Zero Deaths

Mission

To create a culture in which traffic fatalities and serious injuries are no longer acceptable through the integrated application of education, engineering, enforcement and emergency medical and trauma services. These efforts will be driven by data, best practices and research.

Values

- ❖ Continuous improvements
- ❖ Engage partners
- ❖ Evidence-based approaches



The South Central Minnesota Toward Zero Deaths (TZD) program began in 2011. The counties involved include: Blue Earth, Brown, Cottonwood, Faribault, Jackson, Le Sueur, Martin, Nicollet, Nobles, Rock, Sibley, Waseca and Watonwan.

The South Central Minnesota Toward Zero Deaths program is led by a Steering Committee comprised of the "4 Es:"

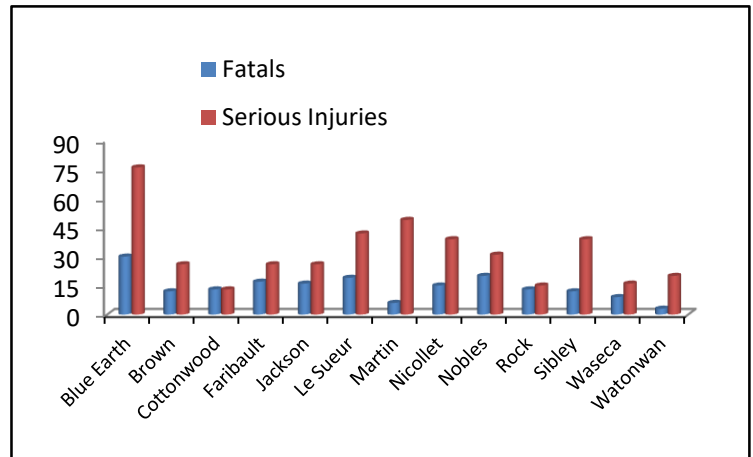
- ❖ Enforcement
- ❖ Engineering
- ❖ Education
- ❖ EMS / Emergency Medical & Trauma Services

South Central Traffic Information

The leading cause of deaths and severe injuries in south central Minnesota include:

- ❖ **Lack of Seatbelt Use**
*2017 South Central Minnesota regional seat belt usage survey results: **86.91** percent—the 2016 seat belts rate was 87.6, this slight drop is not statistically significant.*
- ❖ **Impaired Driving**
- ❖ **Speed and Aggressive Driving**
- ❖ **Inattentive Driving**

South Central Minnesota Fatalities and Serious Injuries by County (2012-2016*)



The leading type of crash resulting in deaths and severe injuries include:

- ❖ **Run-off-Road**
- ❖ **Intersection-Related**

South Central Minnesota TZD Leadership Contacts

Engineering

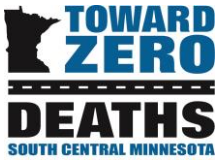
Greg Ous
MnDOT District Engineer
507-304-6101
greg.ous@state.mn.us

Enforcement

Captain Jeremy Geiger
Minnesota State Patrol
507-344-2760
jeremy.geiger@state.mn.us

Education / EMS

Annette Larson
South Central MN TZD Coordinator
507-304-6110
annette.L.larson@state.mn.us



South Central Minnesota Toward Zero Deaths Regional Strategic Plan

Mission

To move south central Minnesota toward zero deaths on our roads, using education, enforcement, engineering and emergency medical and trauma services.

Goal 1 – Reduce TZD Fatality and Serious Injuries

To continuously decrease traffic related fatalities and serious injuries in south central Minnesota from the past **5-year average (2012-2016*)** of 37 fatalities and 84 serious injuries. Note: New injury definitions were introduced in 2016 and may have contributed to a higher reported number of serious injuries.

Objectives

- A. To continuously increase regional seat belt use rates.

The statewide average **was 93 percent in 2016.**

The regional seat belt rate was 86.9 percent in April 2017. The 2016 rate was 87.6 percent, this slight drop is not statistically significant.

- B. To examine the characteristics of the unbelted fatalities and serious injuries.

Calculation of seat belt use in fatal and serious crashes is possible with existing data.

- C. To continuously decrease the following:

5-year average (2012-2016*) in South Central Region

Contributing Factors:

	Alcohol	Speed	Distraction**	Total
Fatalities	9	9	9	37
Fatal Crashes	8	8	9	32
Severe Injuries	18	21	16	84
Severe Injury Crashes	14	15	10	64

Average Annual number of:

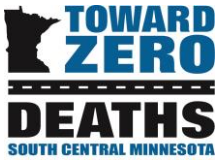
Note: a crash may have more than one of the above listed or additional contributing factor

Total South Central Region (2016*)

	Fatalities	Fatal Crashes	Severe Injuries	Severe Injury Crashes
2016* Total	25	22	107	88
2012-2016* Total	185	162	418	320

**2016 data are preliminary.*

***Distraction data for 2016 are not available. The average for 2011-2015 has been provided.*



South Central Minnesota Toward Zero Deaths Regional Strategic Plan

Region Goal 2- TZD Partnership Goals

To continuously increase TZD awareness and partnerships across south central Minnesota for both the general public and traffic safety professionals

1. Establish the vision of TZD as a priority for all region, county, city (government agencies)
 - A. Engage local government involvement in TZD steering committee and workshops
 - B. Educate/promote traffic safety awareness of city/county officials
 - C. Promote city/county employee education/policies that facilitate the TZD vision

(Activities: Recruitment of city and county to attend TZD event, giving TZD presentations to boards/councils, mailings/connections to Network of Employers for Traffic Safety (NETS))

2. Create and strengthen partnerships in the region
 - A. Engage stakeholders
 - B. Develop networking relationships
 - C. Recruit membership of the TZD partnership

(Activities: EMS Conference booth/presentation, regional workshop, web, calendar, statistics, workshop, orientation)

3. Promote and implement effective traffic safety initiatives in the region
 - A. Develop and distribute resource materials
 - B. Provide enforcement wave support in community
 - C. Promote evidence based countermeasures
 - D. Collect data and statistics within region
 - E. Implement best practices within region

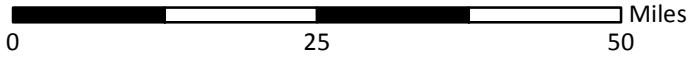
(Activities: web, brochure, one-pagers, presentations, news advisories, workshop, seatbelt observational survey and omnibus survey, media messaging and media events, news releases re: activities woven into existing messages, worksite education and policy development, parent component to drivers education, sober cab development, youth enforcement and education activities)

South Central TZD Region

Fatal and Serious Injury Crashes, 2012-2016

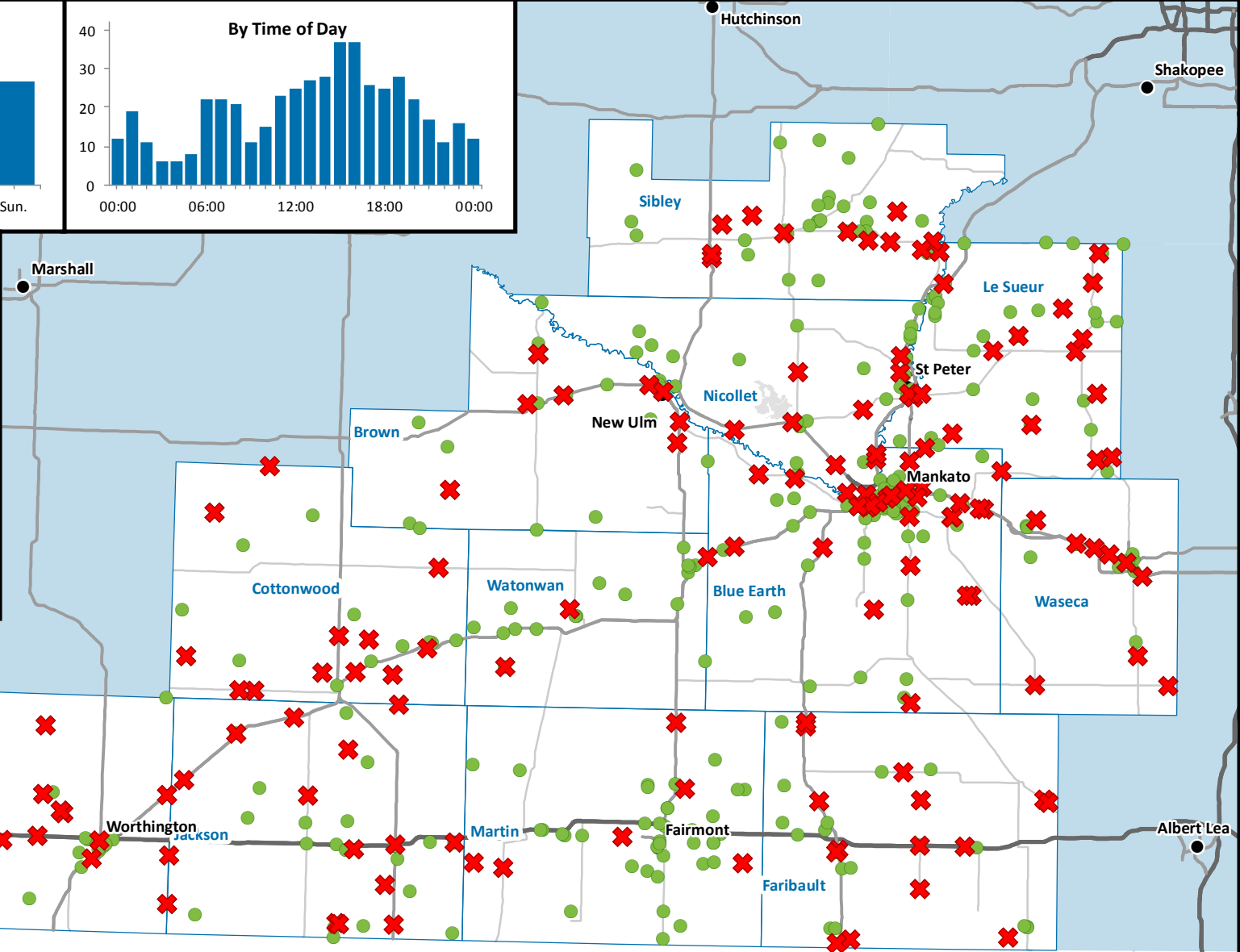
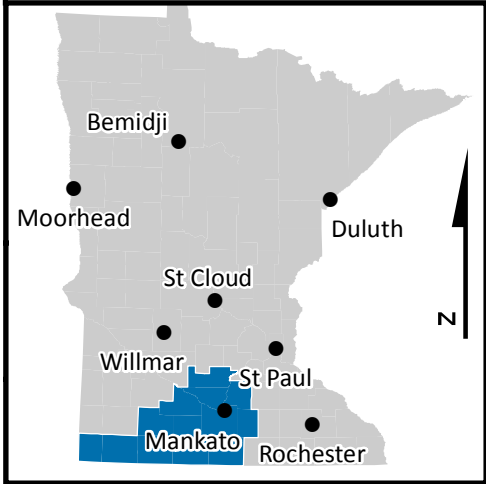
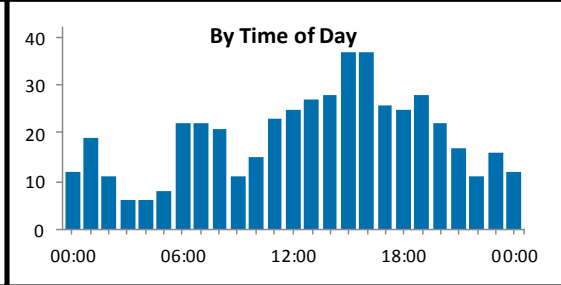
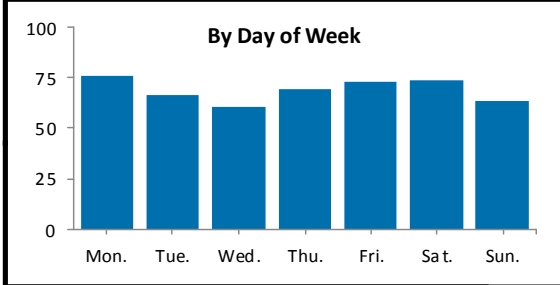


- ✕ Fatal Crash
- Serious Injury Crash



2016 data preliminary: April, 2017.

Not all crashes may be visible at this scale.



South Central TZD Region Crash Data, 2011 to 2015

County	Distraction-Related		Unbelted		Intersection	
	Killed	A Inj.	Killed	A Inj.	Killed	A Inj.
Blue Earth	11	7	10	14	14	24
Brown	3	10	5	7	11	16
Cottonwood	5	5	8	2	5	6
Faribault	2	3	8	7	4	9
Jackson	4	4	6	12	7	10
Le Sueur	7	6	3	16	4	19
Martin	1	6	3	8	3	21
Nicollet	3	10	6	8	5	14
Nobles	3	4	5	16	5	15
Rock	2	2	6	5	5	3
Sibley	1	11	7	8	3	16
Waseca	4	7	3	3	3	9
Watonwan	1	5	1	3	1	6

South Central TZD Region Crash Data, 2012 to 2016*

County	Fatalities and Serious Injuries		Lane Departure		Alcohol-Related		Speed-Related	
	Killed	A Inj.	Killed	A Inj.	Killed	A Inj.	Killed	A Inj.
Blue Earth	30	76	10	33	5	24	6	19
Brown	12	26	3	15	2	7	8	11
Cottonwood	13	13	8	6	8	1	1	0
Faribault	17	26	14	12	1	7	6	10
Jackson	16	26	9	16	3	3	3	4
Le Sueur	19	42	14	24	8	14	6	8
Martin	6	49	1	23	2	11	1	12
Nicollet	15	39	9	18	3	10	4	10
Nobles	20	31	12	14	5	1	5	4
Rock	13	15	5	6	1	5	1	2
Sibley	12	39	9	22	3	1	4	15
Waseca	9	16	6	8	2	3	0	5
Watonwan	3	20	1	10	0	2	0	4

County	Motorcyclists		Pedestrians		Bicyclists	
	Killed	A Inj.	Killed	A Inj.	Killed	A Inj.
Blue Earth	4	10	2	11	1	1
Brown	1	5	1	0	0	0
Cottonwood	0	1	0	2	0	1
Faribault	2	4	0	1	0	1
Jackson	6	6	1	0	0	1
Le Sueur	4	6	1	0	0	0
Martin	0	9	0	0	0	0
Nicollet	2	9	0	2	0	1
Nobles	1	2	1	2	0	0
Rock	2	2	1	2	1	2
Sibley	1	5	0	1	2	1
Waseca	2	3	0	0	1	1
Watonwan	1	0	0	1	0	2

*2016 data are preliminary. Where 2016 data are unavailable, data for 2011-2015 are reported.

Note: New injury definitions were introduced in 2016 and may have contributed to a higher reported number of serious injuries.

TZD'S STATEWIDE GOAL: Fewer than 300 fatalities and 850 serious injuries on Minnesota's roads by 2020

Key accomplishments

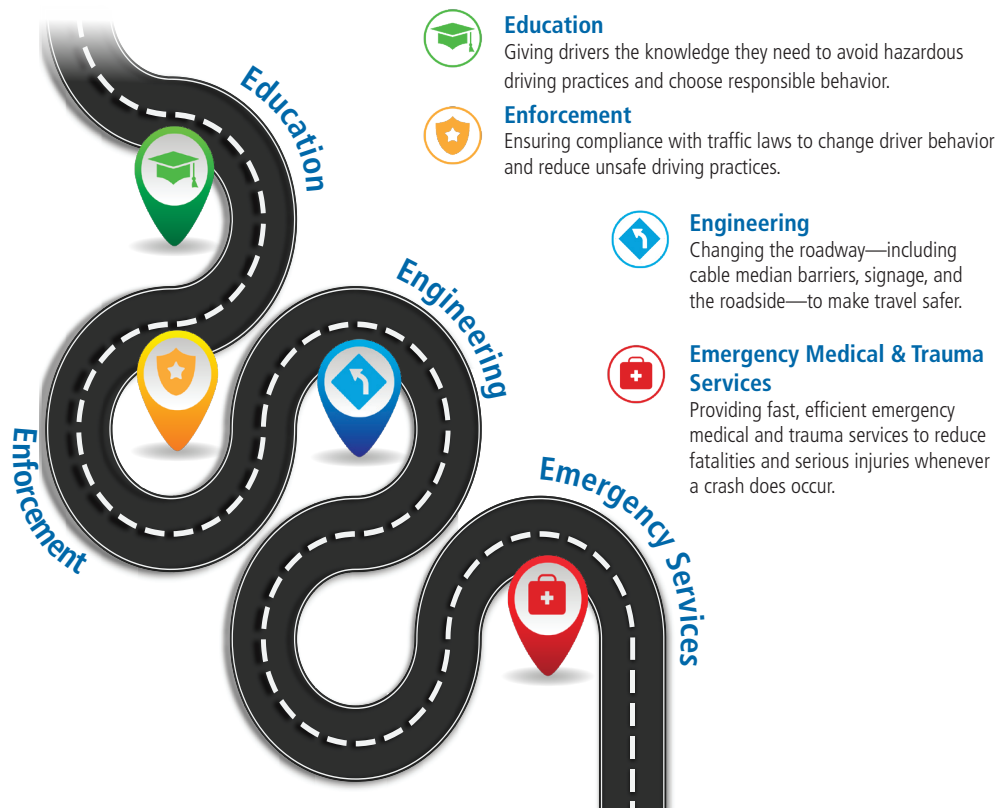
- A 37 percent reduction in the number of traffic deaths since TZD was launched in 2003.
- An updated Strategic Highway Safety Plan in 2014 and implementation of safety plans for each county and MnDOT district.
- A statewide seat belt use rate of 93 percent.
- A new electronic crash report interface for law enforcement, which has logged more than 20,000 crashes since its launch in early 2016.
- Passage of stronger traffic safety policies related to seat belt use, texting while driving, ignition interlock, graduated driving licensing, impaired driving, and speeding in work zones.
- Eight regional partnerships statewide that collaborate and build local relationships to implement TZD.
- Expansion of the statewide trauma system—now at 129 hospitals.
- Implementation of low-cost, high-benefit strategies for intersection and lane-departure crashes on state and local roads.
- More than 900 statewide conference participants annually.

WHAT IS THE MINNESOTA TOWARD ZERO DEATHS PROGRAM?

Minnesota TZD is the state's cornerstone traffic safety program that employs an interdisciplinary approach to reducing traffic crashes, injuries, and deaths on Minnesota roads. The program's vision is to reduce fatalities and serious injuries to zero.

The program is a partnership between the Minnesota Departments of Public Safety, Transportation, and Health; the University of Minnesota; and other stakeholders.

Minnesota TZD works to create a culture in which traffic deaths and serious injuries are no longer acceptable through the integrated application of the "4Es": Education, Enforcement, Engineering, and Emergency Medical and Trauma Services. The program also uses data to target areas for improvement, employ proven countermeasures, implement best practices, and advance innovations and new technologies.



Education

Giving drivers the knowledge they need to avoid hazardous driving practices and choose responsible behavior.



Enforcement

Ensuring compliance with traffic laws to change driver behavior and reduce unsafe driving practices.



Engineering

Changing the roadway—including cable median barriers, signage, and the roadside—to make travel safer.



Emergency Medical & Trauma Services

Providing fast, efficient emergency medical and trauma services to reduce fatalities and serious injuries whenever a crash does occur.

Program goals

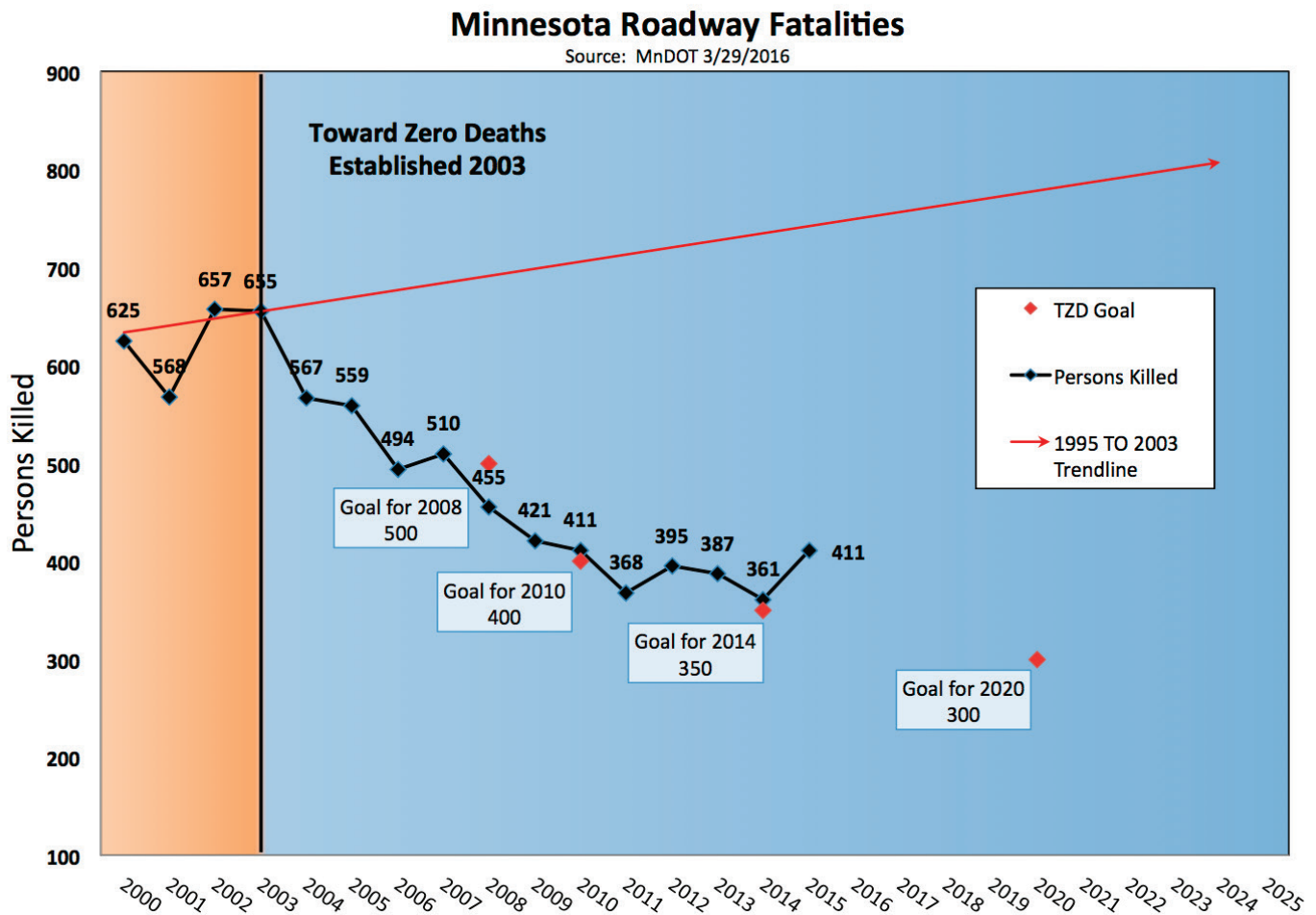
- Pursue widespread public support of traffic safety
- Strengthen TZD as a priority for all units of government and traffic safety partnerships
- Promote and implement effective traffic safety initiatives

Traffic safety is everyone's responsibility: Get involved!

- Contact your regional TZD coordinator and/or participate in a local TZD safety coalition (minnesotatzd.org/initiatives/regions).
- Attend the annual statewide TZD conference and/or regional workshops (minnesotatzd.org/events).
- Attend the TZD stakeholder breakfasts in person or participate online (minnesotatzd.org/events/breakfasts).
- Request to be added to the TZD mailing list: kkirk@umn.edu.

For more information

- Contact Kaydee Kirk, Program Coordinator, 612-626-5854, kkirk@umn.edu
- Contact Kristine Hernandez, Statewide TZD Program Coordinator, 507-286-7601, kristine.hernandez@state.mn.us
- Visit the TZD website: MinnesotaTZD.org



In 2003, 655 traffic deaths occurred on Minnesota's roads. That same year, the statewide TZD program was launched as a deliberate, interdisciplinary approach to traffic safety. Despite increases in the number of licensed drivers, registered motor vehicles, and vehicle miles traveled, there were 411 traffic deaths in Minnesota in 2015—a 37 percent reduction from 2003.

STRATEGIC DIRECTION

→ **STATEWIDE GOAL:** Fewer than 300 traffic-related fatalities—and fewer than 850 serious injuries—by 2020

VISION

To reduce fatalities and serious injuries on Minnesota's roads to zero

MISSION

To create a culture for which traffic fatalities and serious injuries are no longer acceptable through the integrated application of education, engineering, enforcement, and emergency medical and trauma services. These efforts will be driven by data, best practices, and research.

→ **GOAL 1:** Pursue public support of traffic safety as a priority

Strategies

- *Foster the initiatives of the traffic safety culture action team*
- Increase public awareness
- Facilitate effective policy and legislation
- Engage the media in traffic safety messaging

→ **GOAL 2:** Strengthen TZD as a priority for all units of government and traffic safety partnerships

Strategies

- *Urge state agencies and local jurisdictions to make TZD a part of their culture and responsibility*
- *Engage the court system as a traffic safety partner*
- Promote agency-to-agency collaboration
- Implement TZD communications to engage partners and stakeholders
- Increase and diversify participation in TZD programs and events

→ **GOAL 3:** Promote and implement effective traffic safety initiatives

Strategies

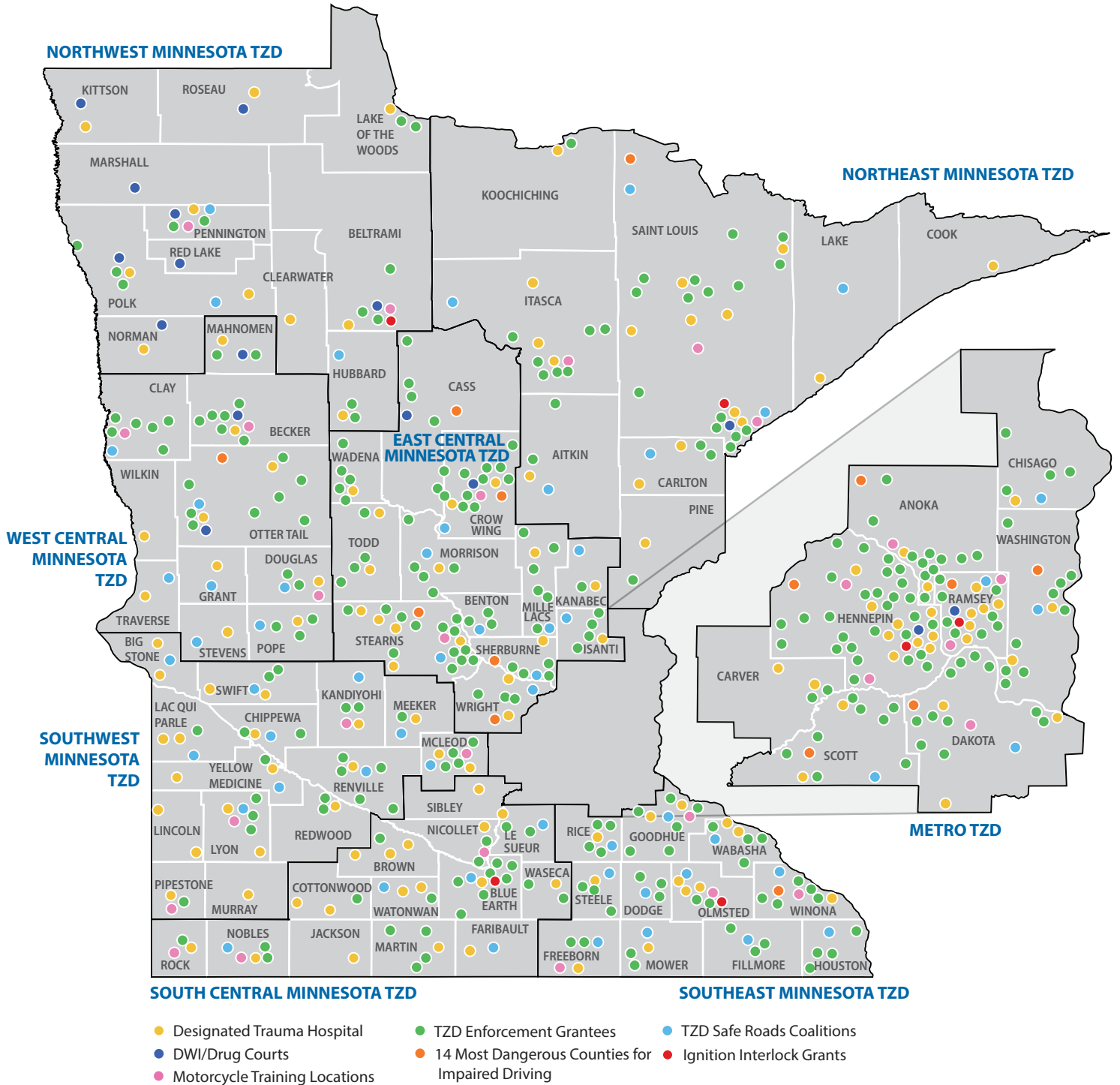
- *Improve the traffic safety records system across all disciplines*
- Implement the 2014 Strategic Highway Safety Plan
- Identify projects and actions resulting from the district and county safety plans
- Leverage Minnesota's trauma system to ensure timely treatment
- Increase collaboration among law enforcement agencies on all state and local roads
- Advance and evaluate new technologies and innovations
- Adopt and implement best practices

Italics signify priority strategies for 2017

VALUES

- Continuous improvement
- Engaged partners
- Evidence-based approaches

Local Minnesota Traffic Safety Initiatives



www.MinnesotaTZD.org/initiatives

Mark Your Calendars

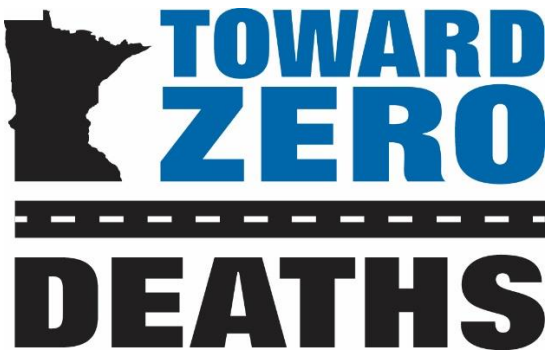
2017 Minnesota Toward Zero Deaths Conference

October 26-27, 2017

Saint Paul, MN

Saint Paul RiverCentre

**Annual Statewide Conference
for Traffic Safety Stakeholders**



Sponsored by

Minnesota Toward Zero Deaths Program
Minnesota Departments of Public Safety,
Transportation, and Health

With support from the National Highway Traffic
Safety Administration

Conference Description

This conference provides a forum to share information on best practices in engineering, enforcement, education, and emergency medical/health and trauma services, and to identify new approaches to reducing the number of traffic fatalities and life-changing injuries on Minnesota roads.

Who Should Attend

- Attorneys
- Child Passenger Safety Advocates
- City and County Engineers
- Departments of Transportation, Public Safety, and Health Employees
- Driver Educators
- Drug Recognition Evaluators
- EMS and Health Care Personnel
- Judges
- Law Enforcement Officials
- Local and State Elected Officials and Public-Sector Employees
- Members of the Court System
- Probation Staff
- Public Health Officials
- Safe Communities Coalitions
- Traffic Safety Stakeholders

At this Conference you will ...

- explore best practices for establishing traffic safety coalitions
- find out what's new in law enforcement on traffic safety
- get the latest on traffic engineering techniques for improving safety
- hear about challenges for EMS in rural communities
- interact with leaders from other disciplines to learn how all 4 Es can best work together
- learn about CPS technical updates
- learn the latest on drugged driving
- discover new ideas through research
- learn about how technology can affect the courtroom . . . and much more!

Credit

PDH, POST, CEU, and CLE credits will be available for attendance at this conference.

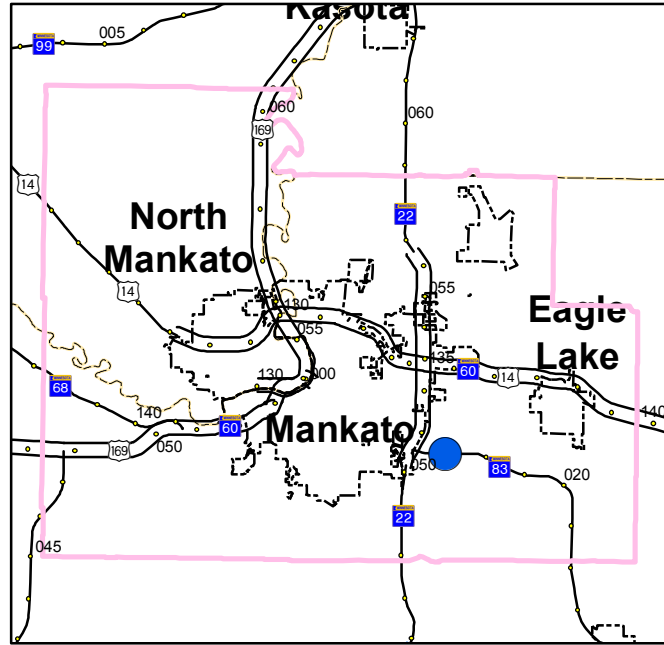
Registration and Further Information

A conference brochure with a detailed program schedule and registration materials will be distributed in late summer 2017. For more information, email cceconf5@umn.edu or visit TZD's website at: www.minnesotatzd.org

2017 Construction

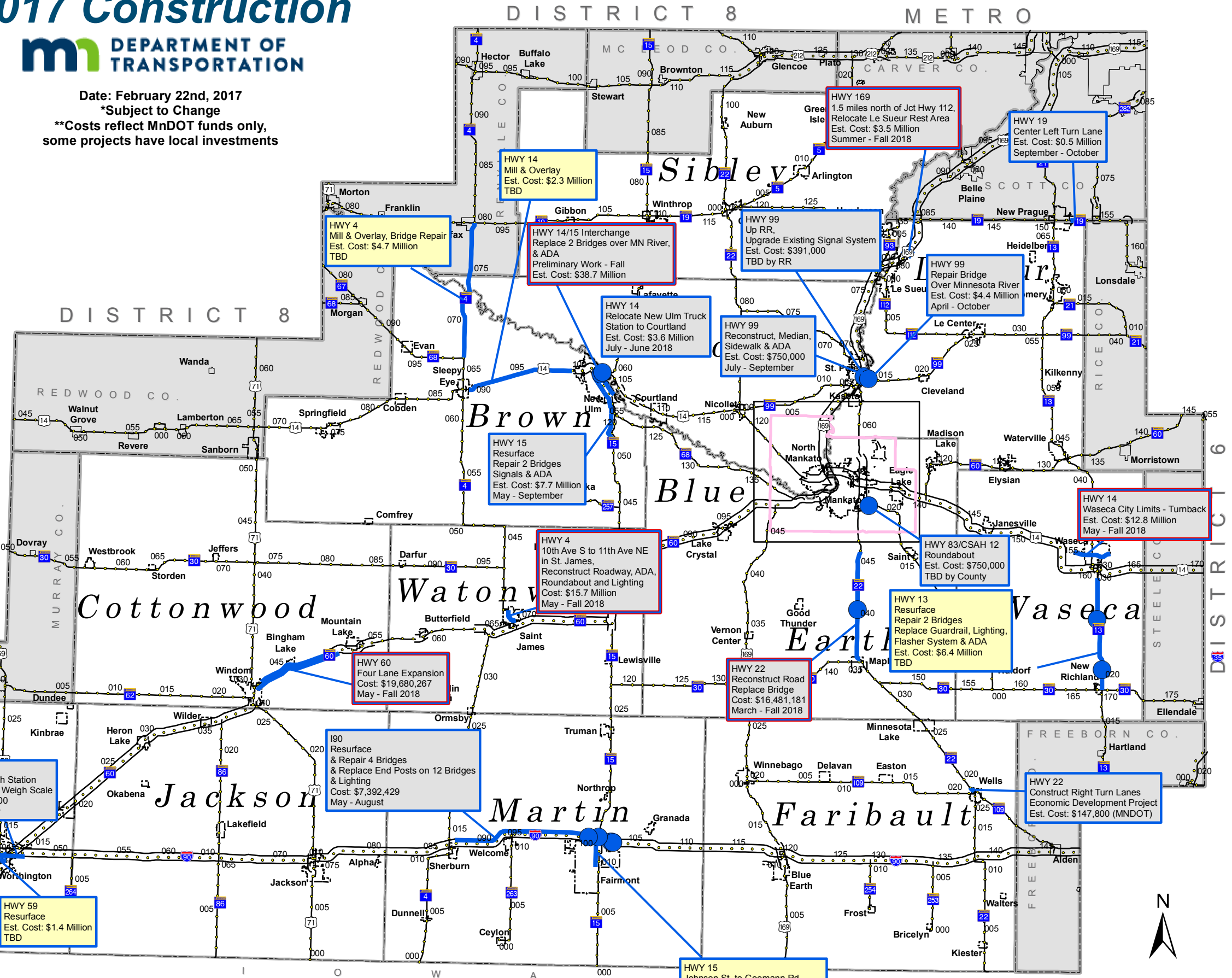


Date: February 22nd, 2017
 *Subject to Change
 **Costs reflect MnDOT funds only,
 some projects have local investments

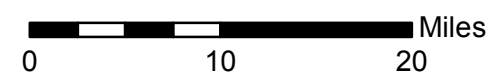


Legend

- 2017 Bridges
- 2017
- Timing Dependent on Legislative Authority
- 2017-2018



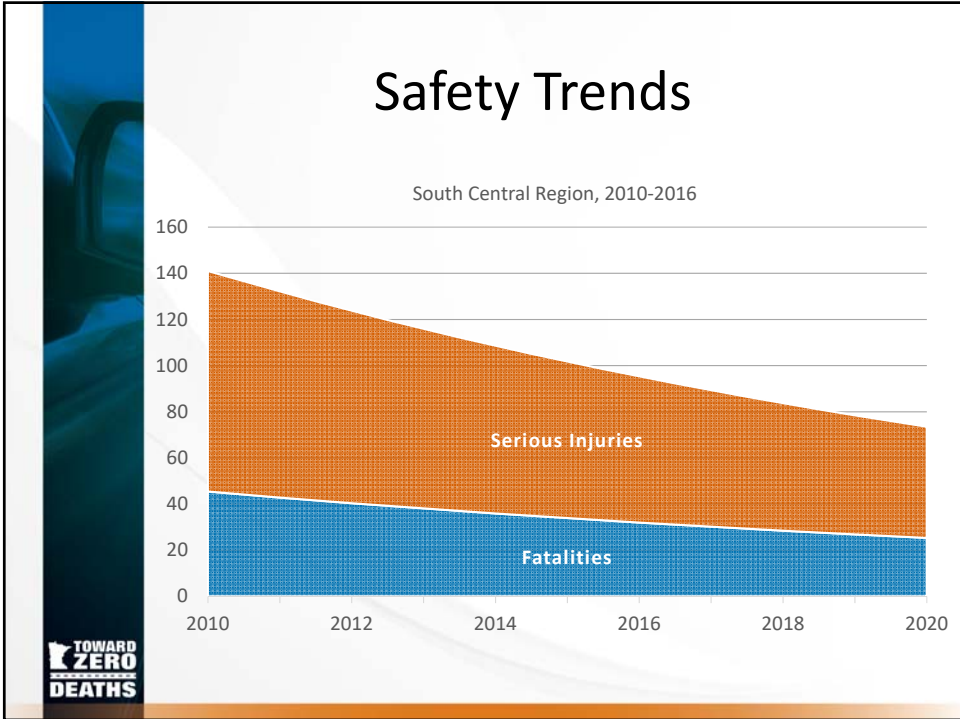
Data Source: Basemap Data from MnDOT Spatial Data Warehouse
 Map Developed by: Tom Brooks MnDOT District 7 - March 2014
 Map Location: S:\GIS\Planning\Altamirano\Planning\2016 MAPS\CONSTRUCTION PROGRAM 2017-2020\PDFs
 Map prepared by: Angelica Altamirano MnDOT District 7
 Date: February 22, 2017

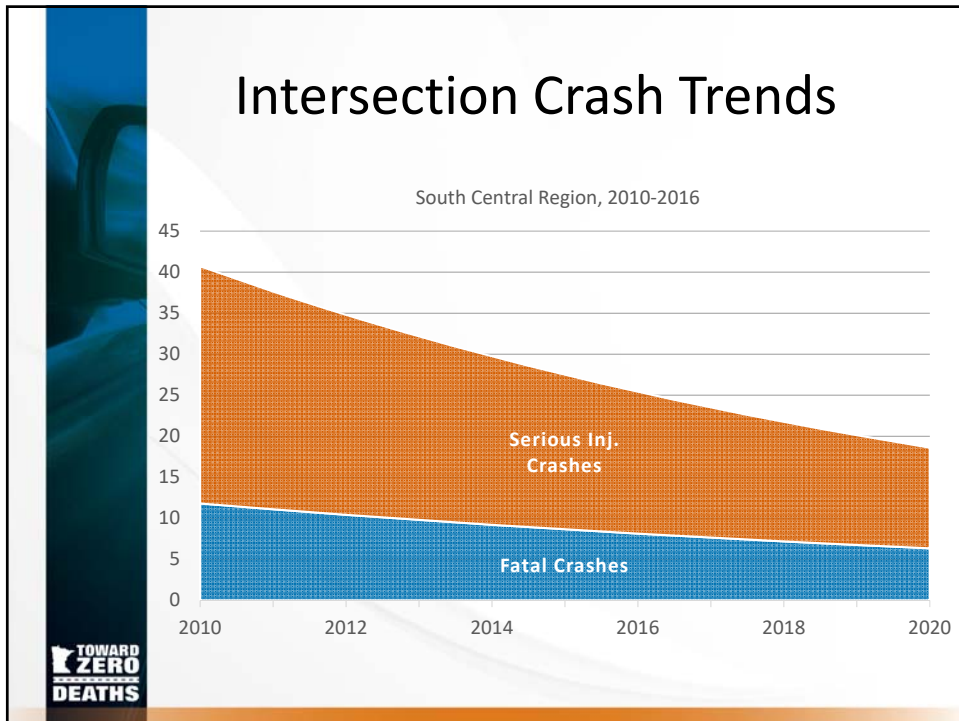
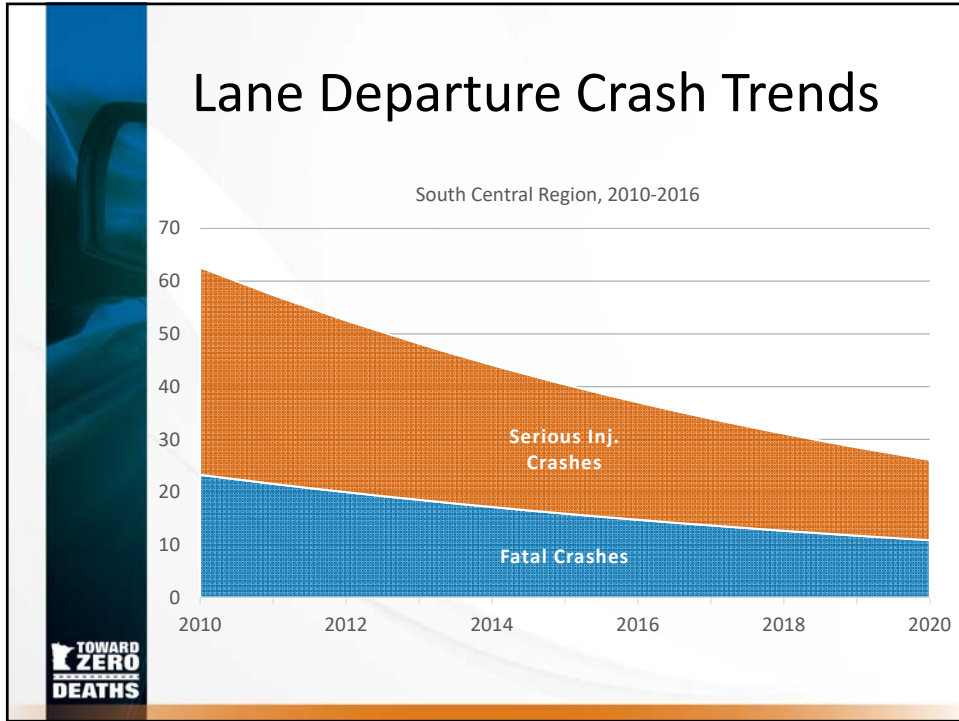


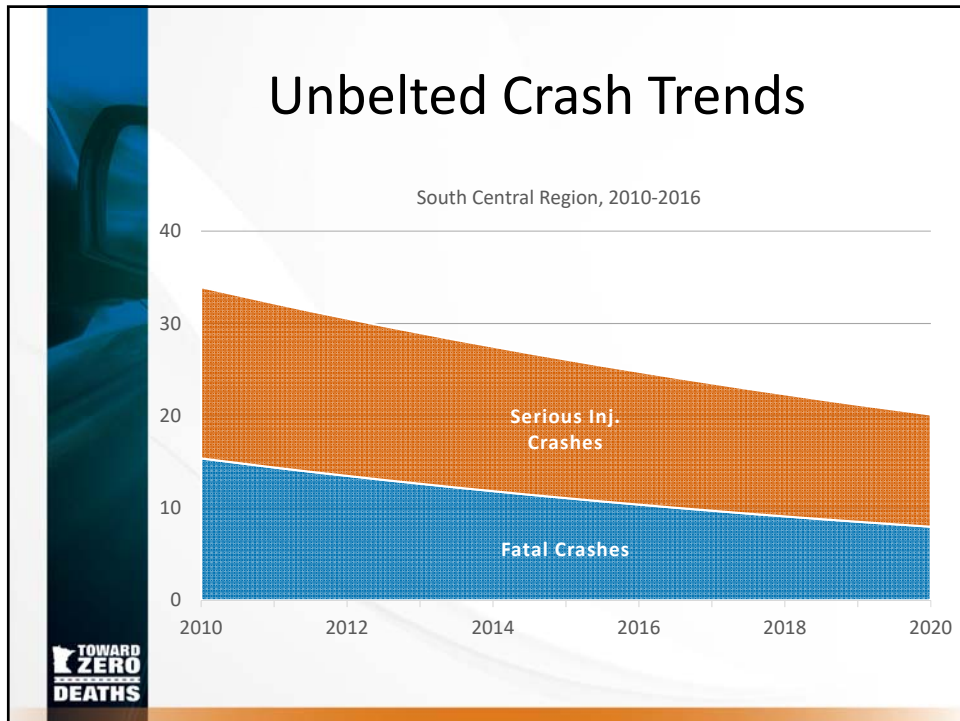
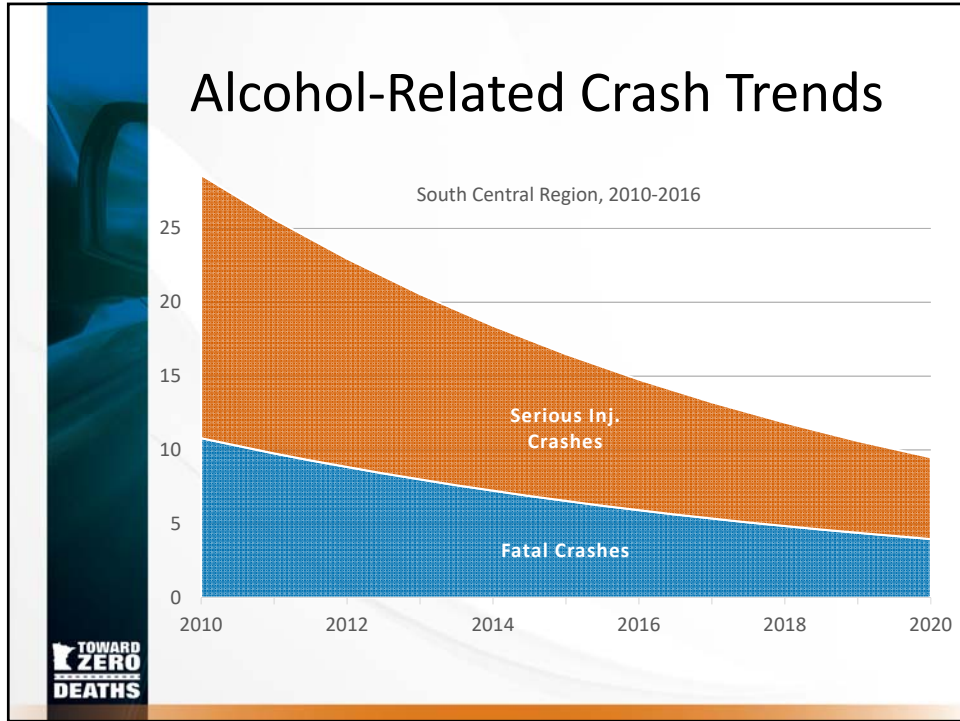
TOWARD ZERO DEATHS MINNESOTA **TOWARD ZERO DEATHS**

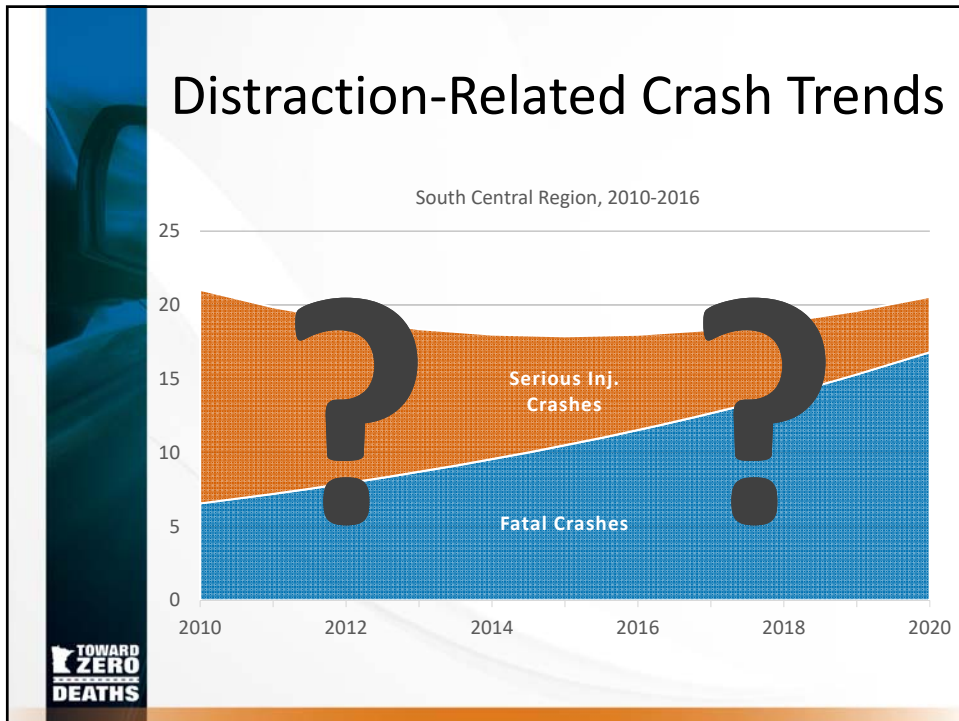
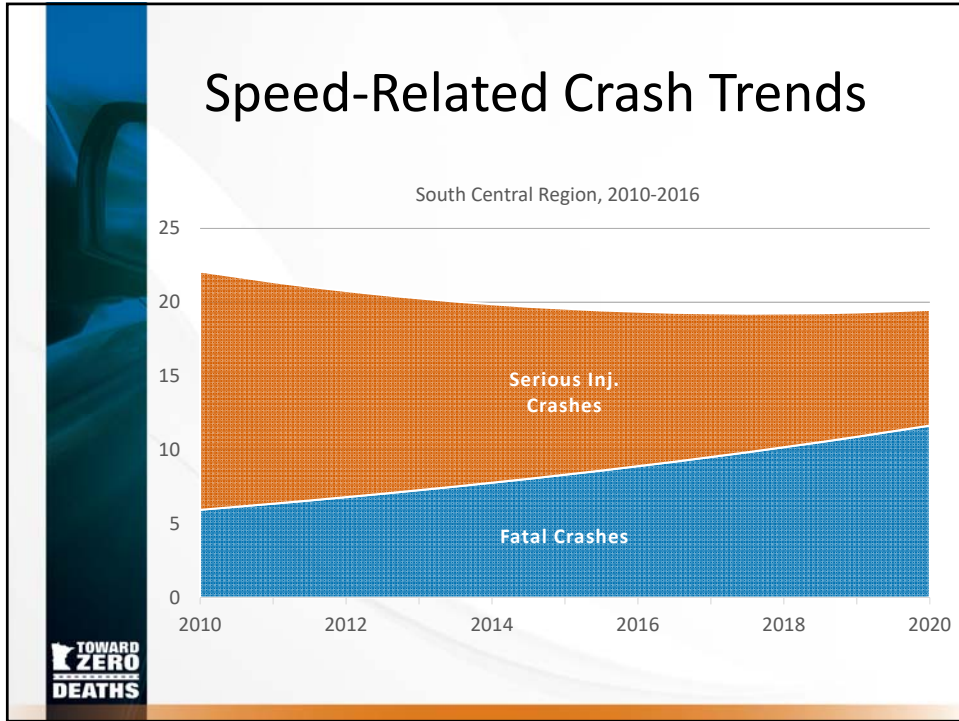
South Central Minnesota Regional Crash Data

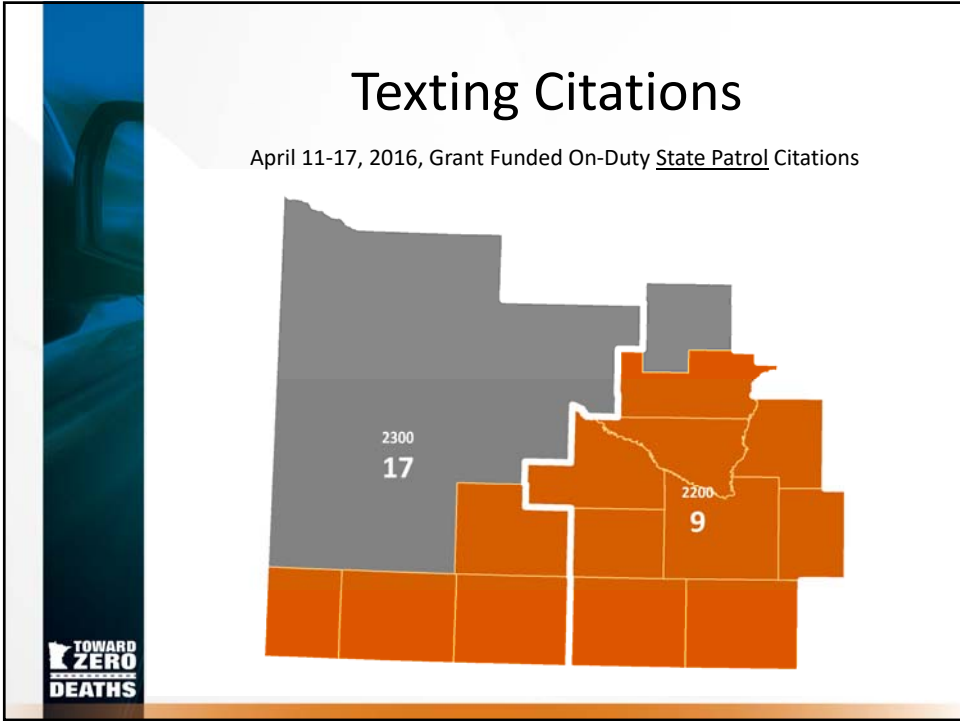
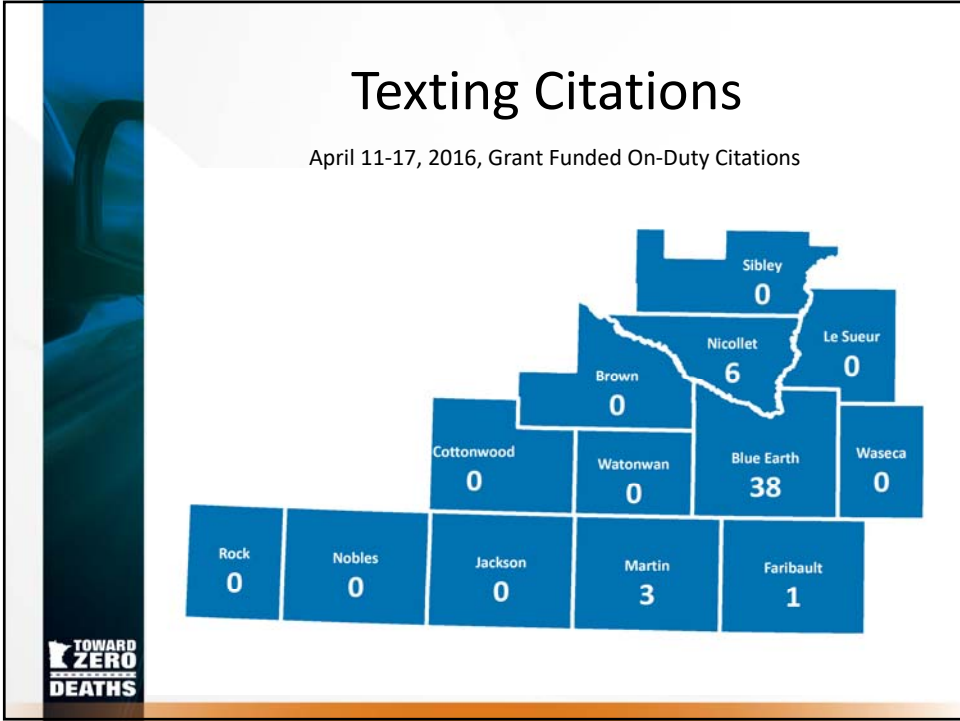
May 4, 2017











South Central Summary

- **The “Big Four” remain a challenge**
 - Impairment
 - Distraction
 - Seat Belt Use
 - Speed
- **Fatalities have leveled off after years of steady decline**
 - How can the Four Es work together to decrease fatalities and serious injuries?



Resources

- **Minnesota Toward Zero Deaths**
 - www.MinnesotaTZD.org
- **Strategic Highway Safety Plan**
 - www.mndot.gov/TrafficEng/Safety/SHSP
- **Minnesota Crash Facts**
 - <https://dps.mn.gov/Divisions/OTS>





CENTER FOR TRANSPORTATION STUDIES

Keep this Statement for your records.

Center for Transportation Studies
University of Minnesota
Professional Development Hours Credit Statement for Registrant Records

Many licensure and certification agencies require the demonstration of continuing professional competency. To the best of our knowledge, this meeting meets the continuing education requirements for Professional Development Hour (PDH) units. This form is for your use in maintaining a record of the hours that may qualify as PDHs by attending session(s) at this meeting. Complete this form and retain it. Please do not return it to the Center for Transportation Studies.
We recommend that you save the Final Program for your records should the licensure or certification agency request information from you. Reporting is done on an honor basis, and members are responsible for maintaining their own records. Please keep this completed form and the Final Program for your records.

The table below shows the professional development hours (PDH) that can be earned for the continuing education activities included in the Center for Transportation Studies South Central Minnesota Toward Zero Deaths Regional Workshop held in New Ulm, MN on May 4, 2017.

Sincerely,

Laurie B. McGinnis

Laurie McGinnis
Director

Table with 5 columns: DAY, TIME, TITLE, HOURS AVAILABLE, HOURS EARNED. Rows include sessions for May 4 such as Welcome, Regional TZD Crash Facts Overview, Social Media!, Breakout Sessions, Critical Incident Stress Debrief, Powerful Dreams Inspire Powerful Action, The Challenges of Drowsy Driving, and Hands on the Wheel, Eyes on the Road: In Memory of Joe Tikalsky. Total PDH Units: 5.5

Name: _____

Date: _____

Proof of Completion
Peace Officer Standards and Training Credit (POST)
Course Number: 10211-0041

Name of Program: South Central Toward Zero Deaths Regional Workshop

Dates: May 4, 2017

Location: New Ulm Conference Center, New Ulm, MN

This conference has been approved for Minnesota Board of Peace Officer Standards and Training (POST) credit. Anyone interested in obtaining this credit must complete this Post Credit form and **keep it in your records** for proof of completion.

This is to certify that I was in attendance for the sessions indicated below:

___ I attended the May 4, 2017 event and will receive 5.0 POST credits for my participation.

Name (First) (M.I.) (Last)

Affiliation

Signature Date

As of July 2016, the Minnesota Board of Peace Officers tracks the CE credits of officers. The Minnesota TZD program staff will submit the TZD regional workshop rosters to POST for CE credit tracking. Officers are expected to keep certificates or other proof of completion documents for the course/workshop they attend.

KEEP THIS FOR YOUR RECORDS

CERTIFICATE OF COMPLETION
FOR EMERGENCY MEDICAL
AND TRAUMA STAFF

ATTENDEE'S NAME

South Central Minnesota Regional Toward Zero Deaths Workshop

May 4, 2017

New Ulm, MN

6.0 Hours Continuing Education Credits

Presenters:

Captain Geiger, MN State Patrol

Greg Ous, District Engineer, MnDOT District 7

Mike Asleson, DWI Deployment Coordinator, Bureau of Criminal Apprehension

Scott Thompson, Traffic Engineer, MnDOT District 7

Slyvie and Greg Tikalsky, Personal Impact Speaker

Mark Griffith, Executive Director SC MN EMS Regional System

Dave Boxum, Public Information Officer, Office of Communications Minnesota

Department of Public Safety

Julie Hatleli, RN, BSN, Mayo Clinic Health System Regional Sleep Disorder Center

Annette Larson, South Central Toward Zero Deaths Regional Coordinator

