



Engineering for the Silver Tsunami

Scott M. Thompson – MnDOT District 7
May 29, 2015



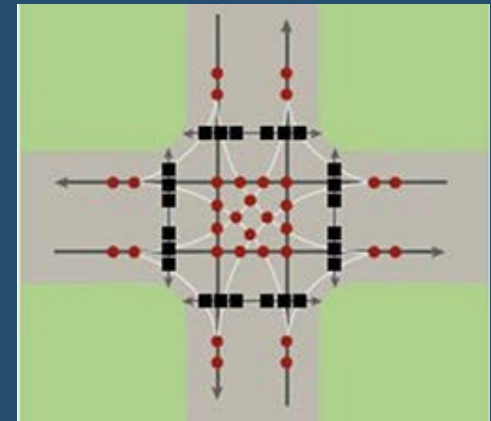
Statistics – a silver lining

- Crash rates down for older drivers
 - Better Health
 - Roadway Safety
 - Vehicle technologies
- Average driver age has increased
 - Hasn't resulted in large increase in crashes – thus far
 - “Design User” age should be 65+



Intersections – the biggest problem

- Large number of decisions
 - More conflicts
- Comprehension



Intersections – the biggest problem

- Reduce the number of decisions
- Reduced Conflict U-Turn (AKA: J-Turn)

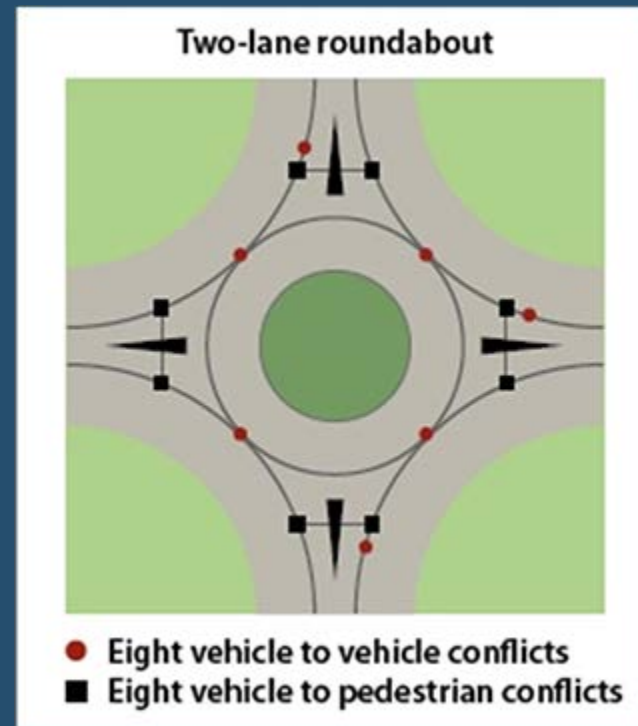
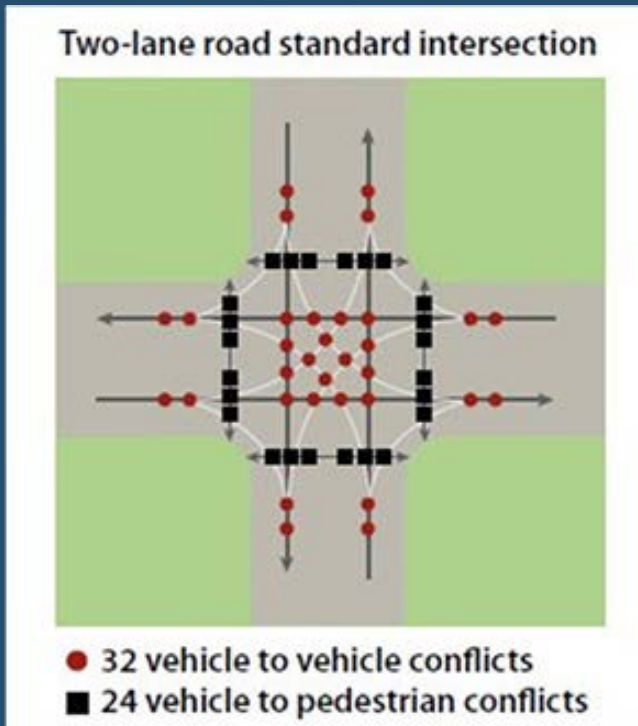


42 conflict points reduced to 24; 70% reduction in fatal crashes



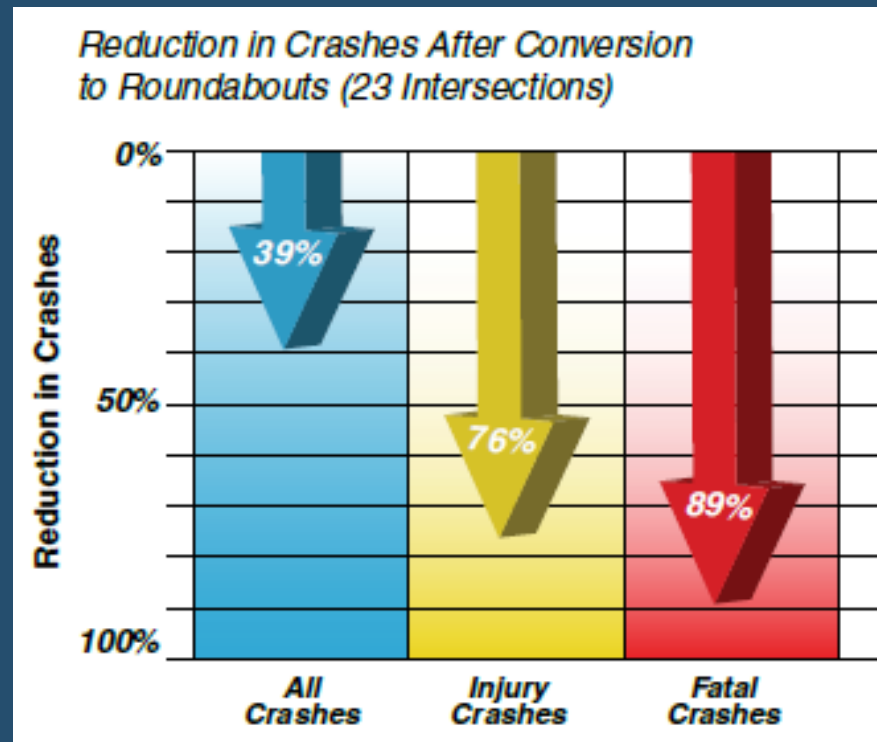
Intersections – the biggest problem

- Reduce Conflicts



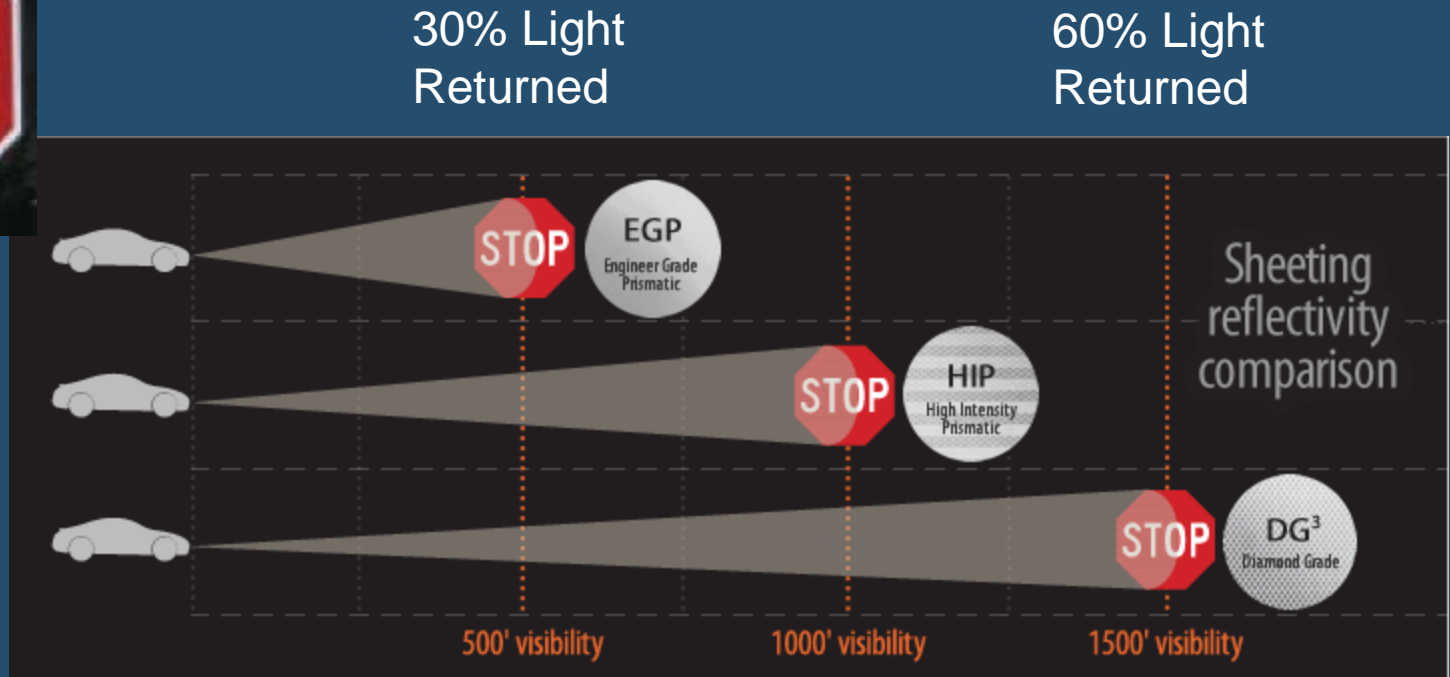
Intersections – the biggest problem

- Roundabouts



Intersections – strategies

- Improve comprehension with better signing materials



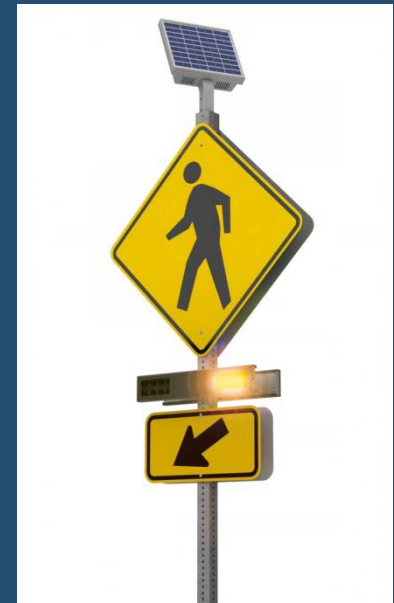
Intersections – strategies

- ...with bigger signing
- ...with improved clarity



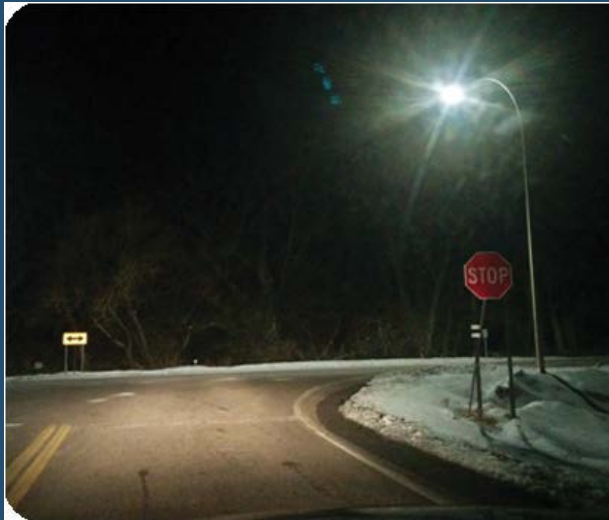
Intersections – strategies

- Improve comprehension with flashers/beacons



Intersections – strategies

- Improve comprehension with lighting



Intersections – strategies

- Improve comprehension in all weather



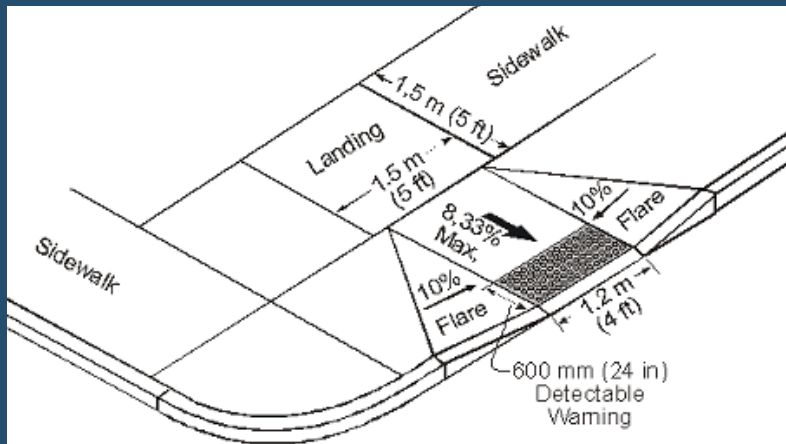
Intersections – strategies

- Improve comprehension with contrast



Intersections – strategies

- Non-motorized improvements
 - Signals
 - APS (Accessible Pedestrian Signals)
 - Extra Walk Time
 - Curb Ramps





Questions ?







Contact Information

MnDOT District 7 - Mankato

Scott M. Thompson

507-304-6156

scott.m.thompson@state.mn.us



Obstacles as we get older

- Declining Vision
 - 40's: Hard to focus up close
 - 60's: Reduced pupil size
 - 70's: Loss of peripheral vision (20-30 degrees)
- Slowed reaction times
- Reduced fitness (strength, flexibility)



Identify Curves

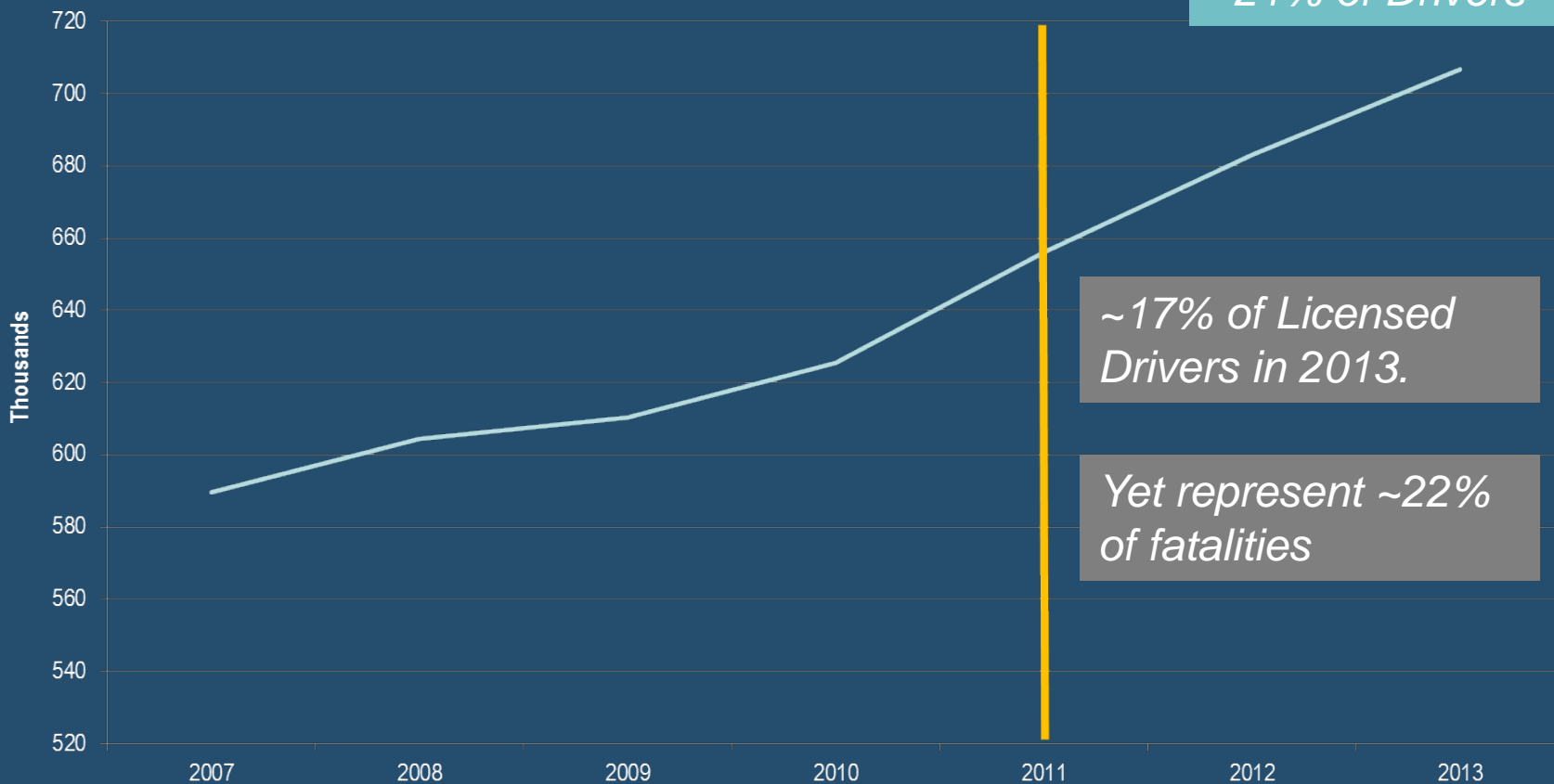
- Use chevrons to delineate curves.





Trend of older drivers

No. Driver Licenses (Age 65+)



*Projected to increase to 900,000+ by 2020
~21% of Drivers*

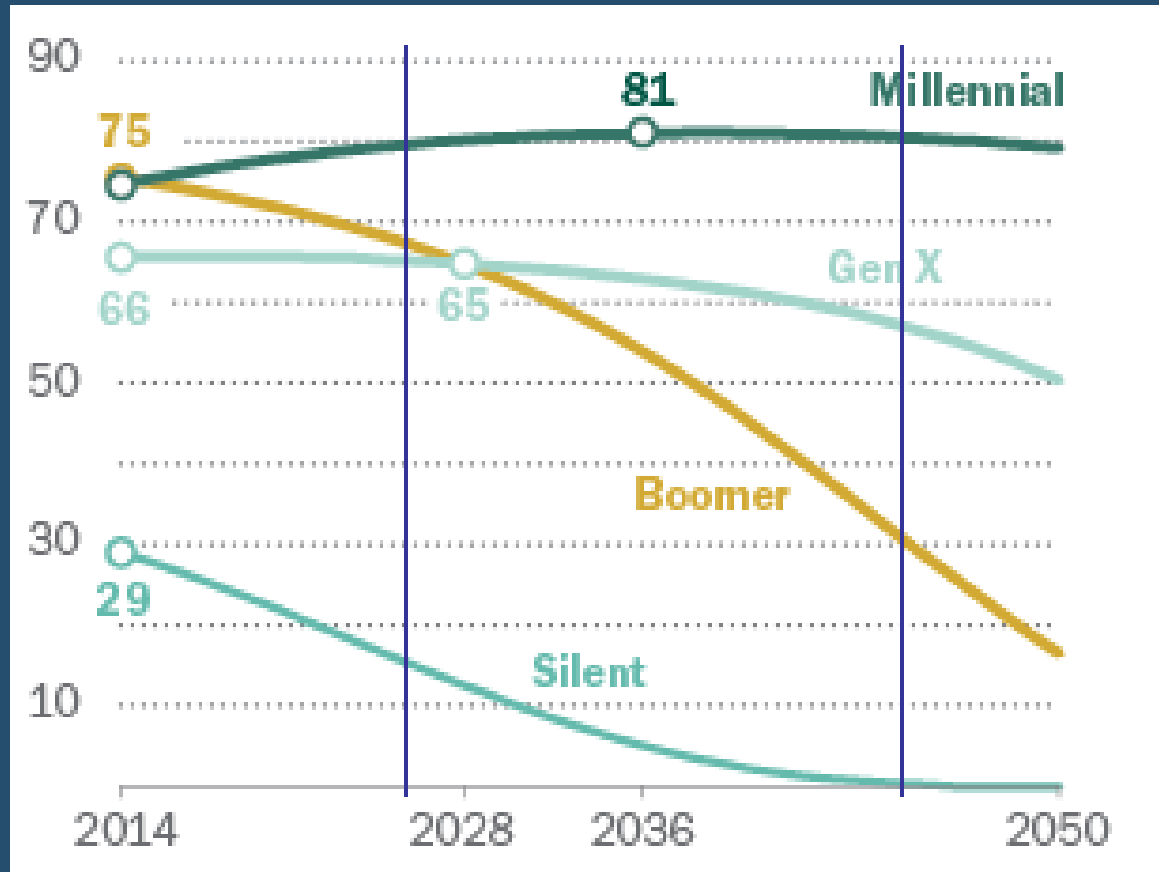
~17% of Licensed Drivers in 2013.

Yet represent ~22% of fatalities



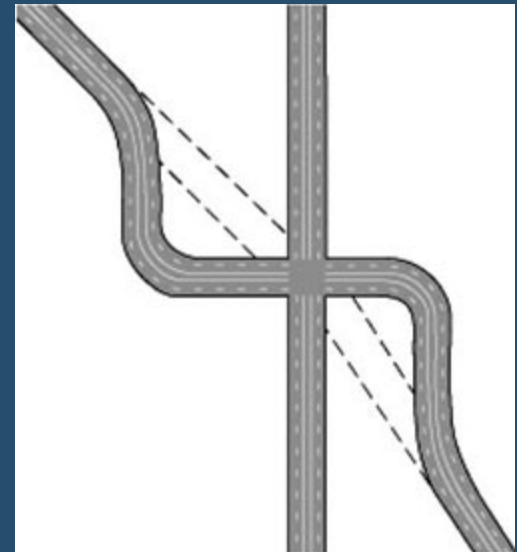
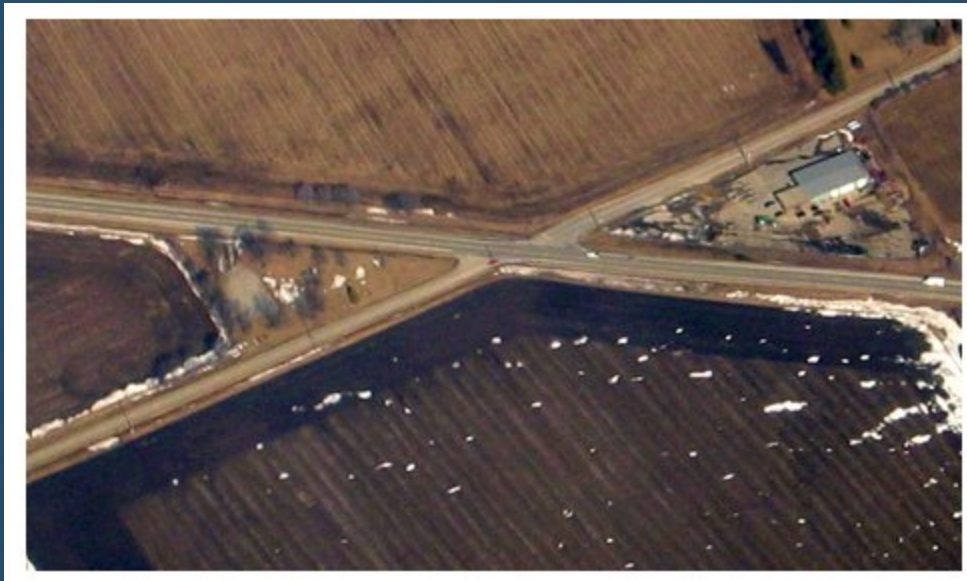
What's to come

Making transportation easier is good for everyone



Other Age Related Issues

- Address driver flexibility: remove skew



Non Engineering Solutions

- Mobility programs
 - Ensuring transportation for those who don't drive





Non Engineering Solutions

- Identifying older drivers at increased risk of crashing and intervene
 - Update procedures for assessing medical fitness for driving
 - In Minnesota – Voluntary reporting of unsafe drivers
<https://dps.mn.gov>
- Increase seat belt use among older drivers

