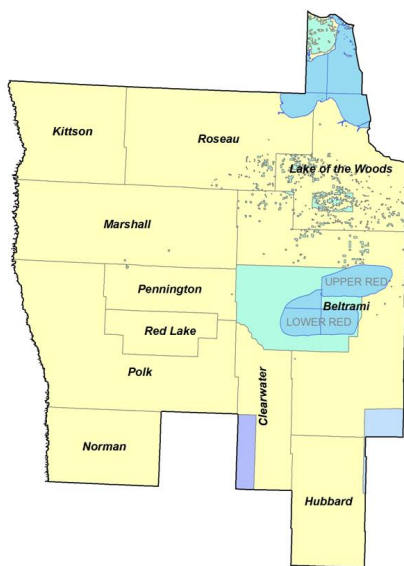


Mission:

To create a culture in which traffic fatalities and serious injuries are no longer acceptable through the integrated application of education, engineering, enforcement and emergency medical and trauma services. These efforts will be driven by data, best practices and research.

Values:

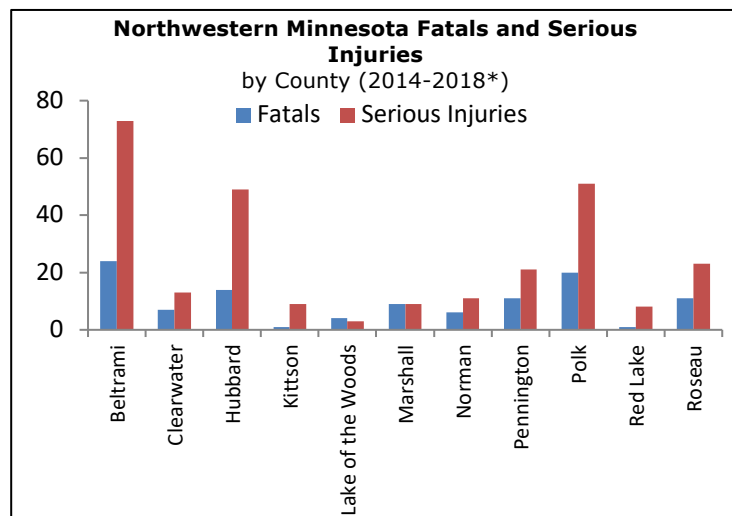
- ❖ Continuous improvements,
- ❖ Engage partners and
- ❖ Evidence-based approaches.



The Northwest Minnesota Toward Zero Deaths (TZD) program began in 2008. The counties involved include: Beltrami, Clearwater, Hubbard, Kittson, Lake of the Woods, Marshall, Norman, Pennington, Polk, Red Lake and Roseau.

The leading cause of deaths and severe injuries in northwest Minnesota include:

- ❖ **Alcohol**,
- ❖ **Distraction**,
- ❖ **Speed** and
- ❖ Lack of **Seatbelt** use.



The leading type of crash resulting in deaths and severe injuries include:

- ❖ **Run-off-Road**
- ❖ **Intersection-related**

The Northwest Minnesota TZD program is led by a steering committee comprised of the "4 Es:"

- ❖ Enforcement
- ❖ Engineering
- ❖ Education
- ❖ Emergency Medical and Trauma Services.

Northwest Minnesota TZD Leadership Contacts

Engineering

J.T. Anderson
MnDOT District Engineer
218-277-7962
j.t.anderson@state.mn.us

Enforcement

Capt. Mike Wedin
Minnesota State Patrol
218-683-8410
michael.wedin@state.mn.us

Education / EMS

Sue Johnson
TZD Regional Program Director
218-766-5943
susan.marie.johnson@state.mn.us

www.minnesotatzd.org