



healthy  
northland  
STATEWIDE HEALTH IMPROVEMENT PROGRAM

# **Pedestrians and Bicyclists:**

Working together for safe modes of transportation for all users.

***Facilitator:***

Annie Harala, Healthy Northland SHIP Program

***Panelists:***

Joshua Gorham, St. Louis County Public Health Nurse

Nick Lepak, Duluth Police Department

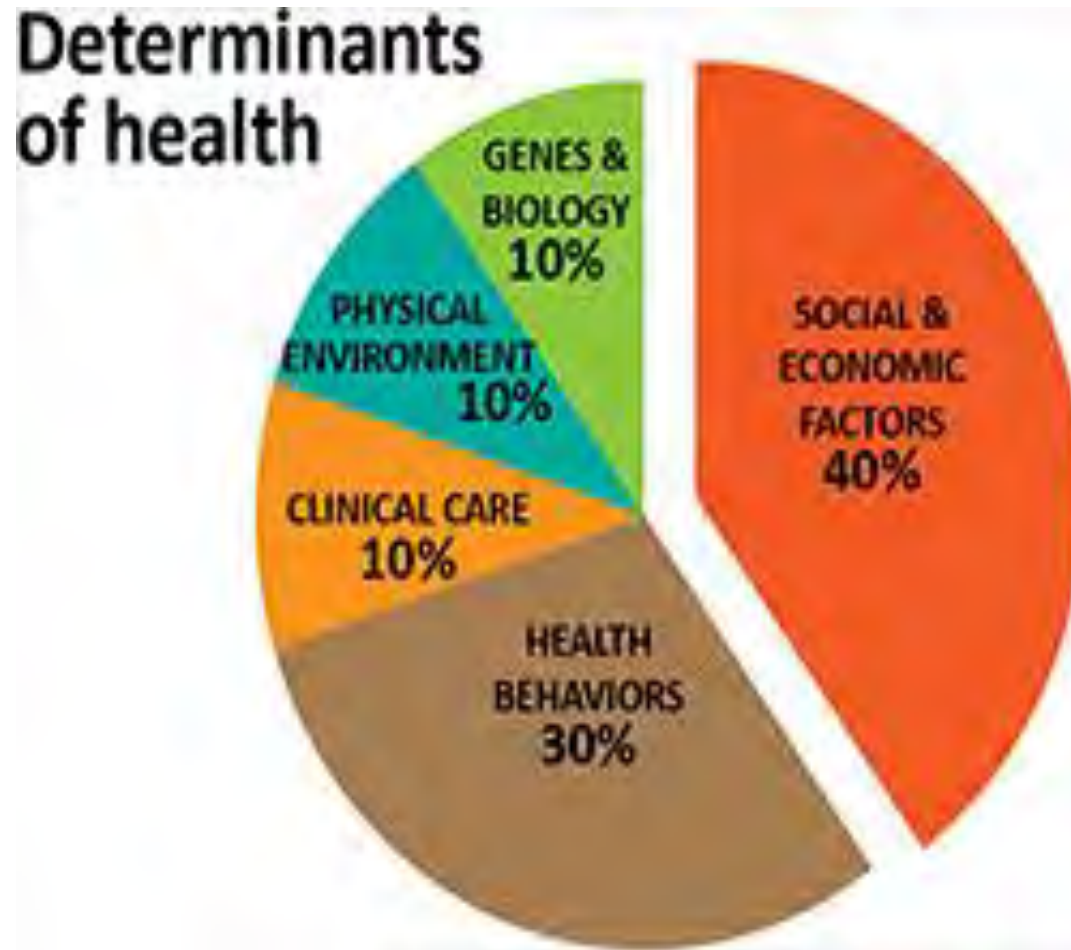
Vic Lund, St. Louis County Traffic Engineer

Ellen Pillsbury, ARDC Senior Planner

Randy Strohmeyer, Gold Cross EMS

# What Contributes to Your Health?

---



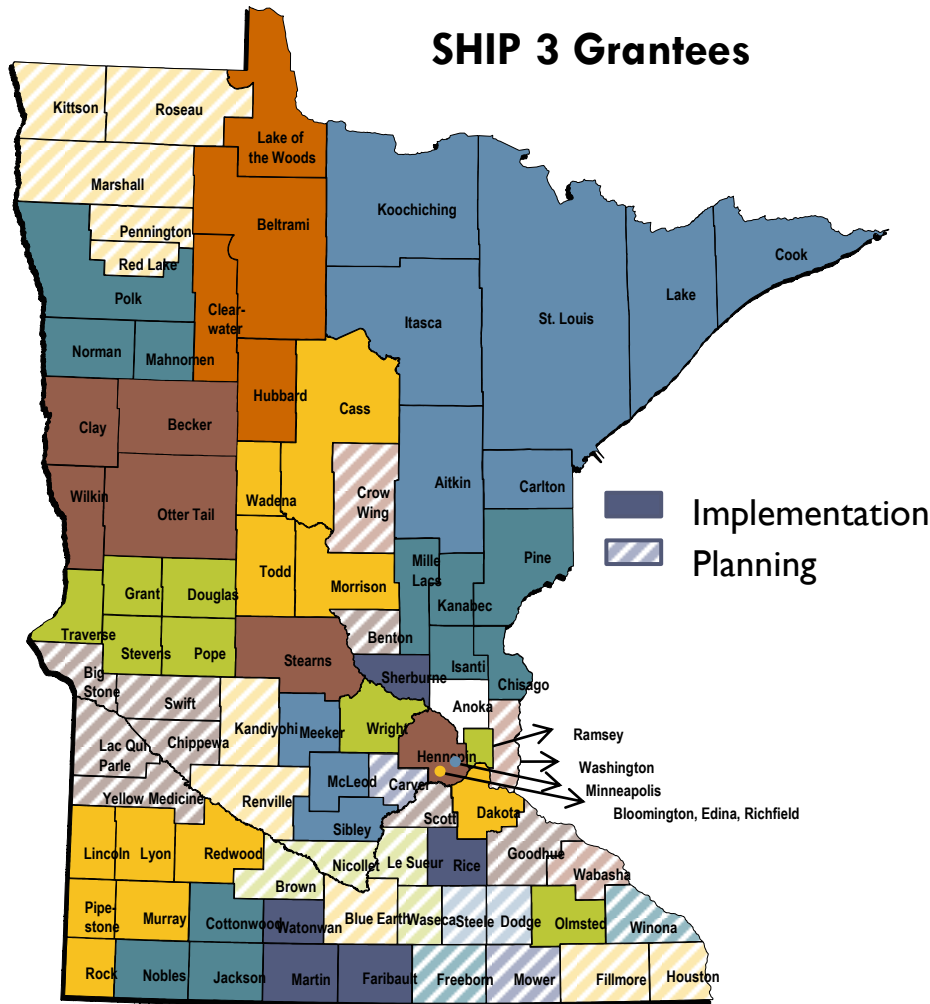
# Health Equity



# Environmental Impacts on Health



# SHIP 3 Grantees



Revised 9/2013

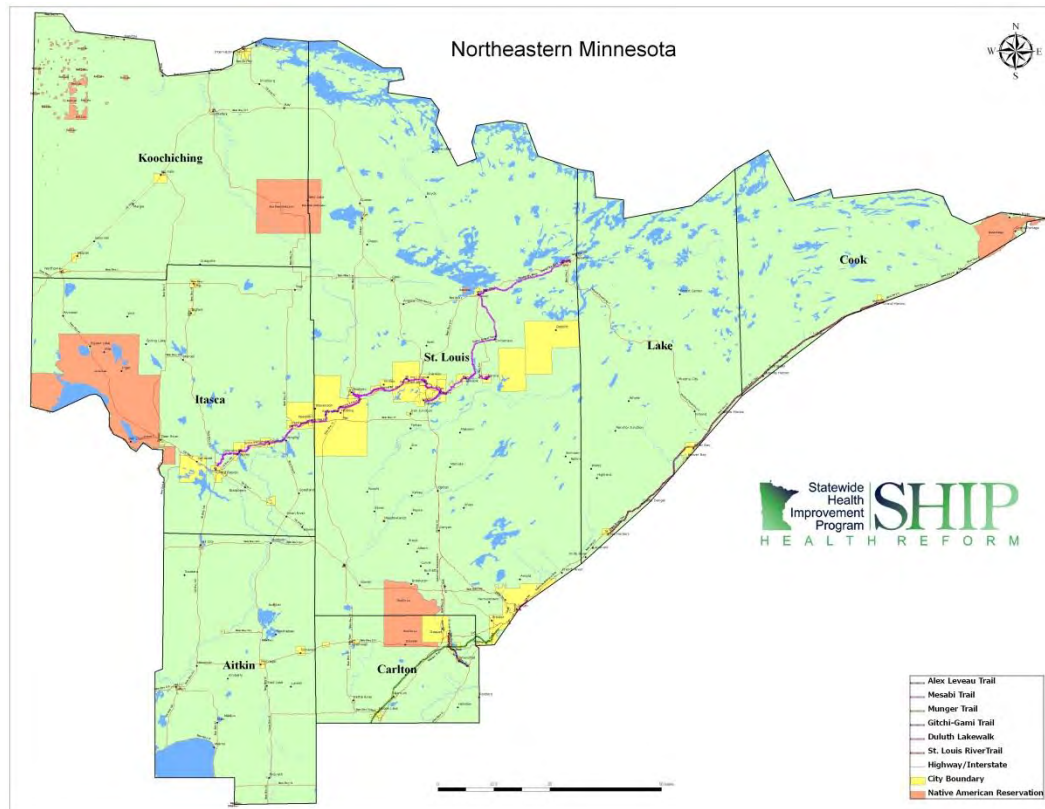


healthy  
northland  
STATEWIDE HEALTH IMPROVEMENT PROGRAM



# healthy northland

STATEWIDE HEALTH IMPROVEMENT PROGRAM



**Carlton, Cook, Lake, St. Louis Community Health Board**

In partnership with **Aitkin, Itasca, Koochiching Community Health Services**



# healthy northland

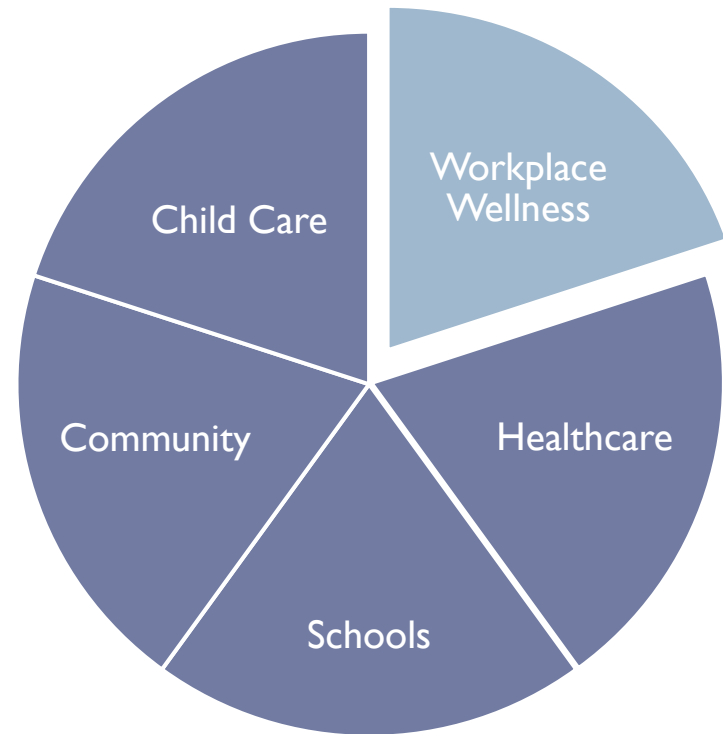
STATEWIDE HEALTH IMPROVEMENT PROGRAM



# SHIP 4 Behaviors and Settings



**Behavioral Risk Factors**



**SHIP 4 Settings**



healthy  
northland  
STATEWIDE HEALTH IMPROVEMENT PROGRAM





# Healthy Eating



healthy  
northland  
STATEWIDE HEALTH IMPROVEMENT PROGRAM



# Tobacco-Free Living



healthy  
northland  
STATEWIDE HEALTH IMPROVEMENT PROGRAM



# Health Care Strategies



- ▶ Partnerships between public health, primary care clinics and community resources
  - ▶ Practice facilitation with clinics in NE Minnesota
- ▶ Implementing preventive care around obesity, tobacco use and hypertension.
- ▶ Motivational Interviewing
- ▶ Clinical Health Coaching
- ▶ Breastfeeding



# Worksite Wellness

---



- ▶ Worksite Wellness Cohort Learning Model
- ▶ Lake County & Itasca County



healthy  
northland  
STATEWIDE HEALTH IMPROVEMENT PROGRAM



# Active Living



healthy  
northland  
STATEWIDE HEALTH IMPROVEMENT PROGRAM





# Health in All Policies

## Community Comprehensive Plan



# Healthy Northland Webtool



healthy  
northland  
STATEWIDE HEALTH IMPROVEMENT PROGRAM



ACTIVE  
LIVING



HEALTHY  
EATING



CLINICAL  
CARE



TOBACCO  
FREE  
LIVING



HEALTHY  
GOVERNMENT  
POLICIES

TOOLS ▾



TOP NEWS



Donar shalem gue lucada shem e phontiam. Quisque facilisis erat a dui. Nam malesuada dolor.

[Read More](#)



# Healthy Northland Webtool

www.healthynorthland.org/index\_frame.aspx?w=424&u=/index\_simple.aspx?id=32~fc=1&l=/active\_arrowhead/menu\_panel.aspx^cal=26~prop=11~tow=12~act=1

**Go Back** 37 Search Results for Healthy Living Facilities where the Facility Type is 'Farmers Markets'

Page 1 of 4

**Finke's Berry Farm** (Farmers Markets)

**Wentworth Gardens** (Farmers Markets)

**Jamison Meats** (Farmers Markets)

**Stop-A-Sec** (Farmers Markets)

**Farmer Doug** (Farmers Markets)

**Hoffbauer's Christmas Trees and Wreaths** (Farmers Markets)

**Healthy Northland** Provided by SHIP

Current Action: Move Map

Map Navigation Tools Help

**Backus Community Market**

Facility Name: Backus Community Market

Type: Farmers Markets

Description: Locally grown (northern St Louis County and all of Koochiching County) produce and food products, crafts and artwork. 15 local vendors.

City: International Falls

County:

Owner:

Year Built:

Year Opened:

Facility ID: 1412

**Overview**

**Map Layers**

Select a Map Layer to ma...

- Trails
- Hiking
- Mountain Biking
- Paddling
- Portages
- Road Biking
- Sidewalks
- X-County Skiing
- Active Living Trails
- Main Map
- Tobacco Free Living
- Active Living

Select a Layer and use (ALT) + Click to select Features

Use One-Touch Data Selection

# Community Vitality

---





healthy  
northland  
STATEWIDE HEALTH IMPROVEMENT PROGRAM

## **Annie Harala**

Regional Coordinator, Healthy Northland

[annieh@communityhealthboard.org](mailto:annieh@communityhealthboard.org)

218-733-2866

---

