



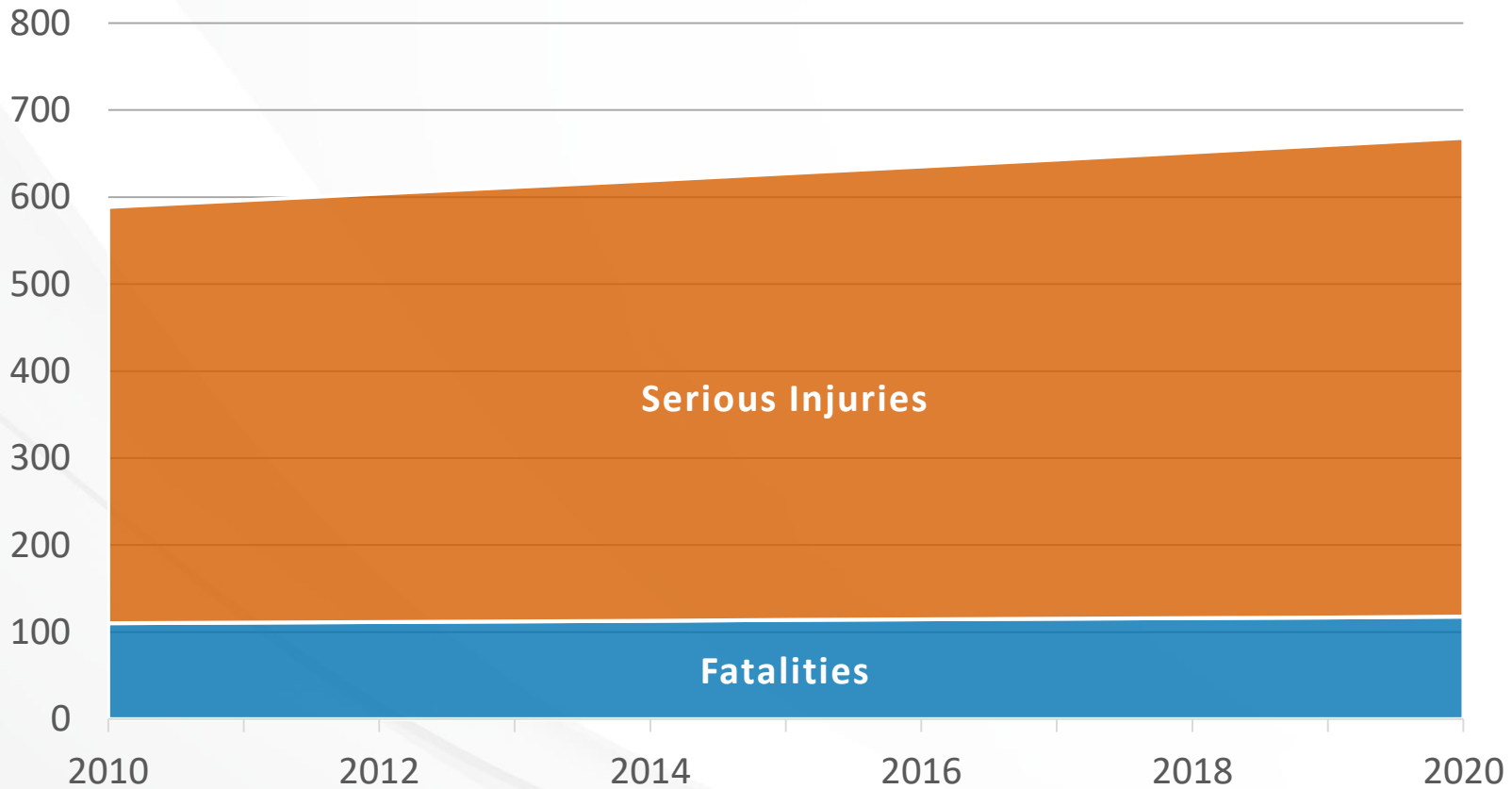
MINNESOTA
TOWARD **ZERO** DEATHS

Metro Minnesota Regional Crash Data

April 19, 2017

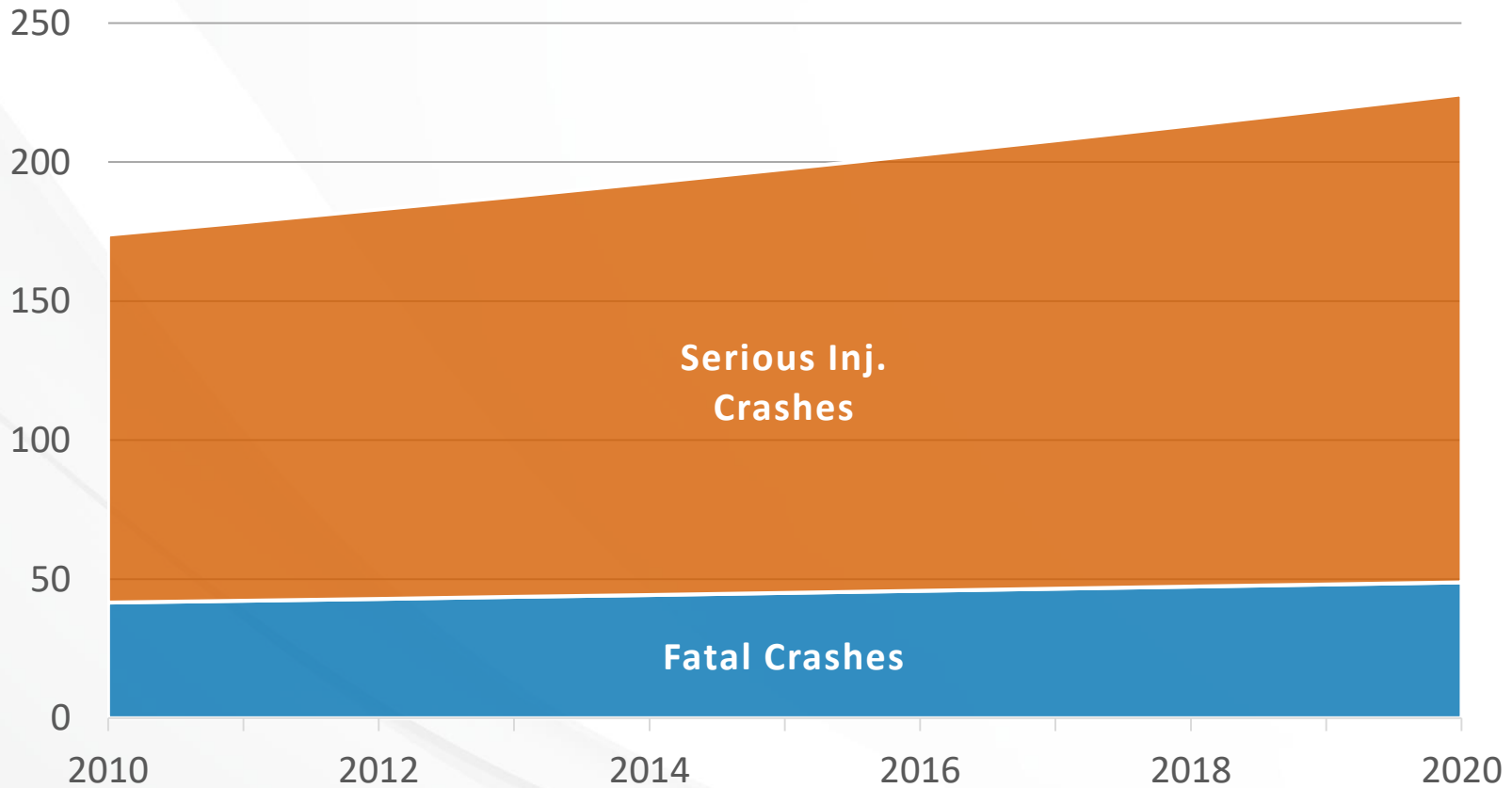
Safety Trends

Metro Region, 2010-2016



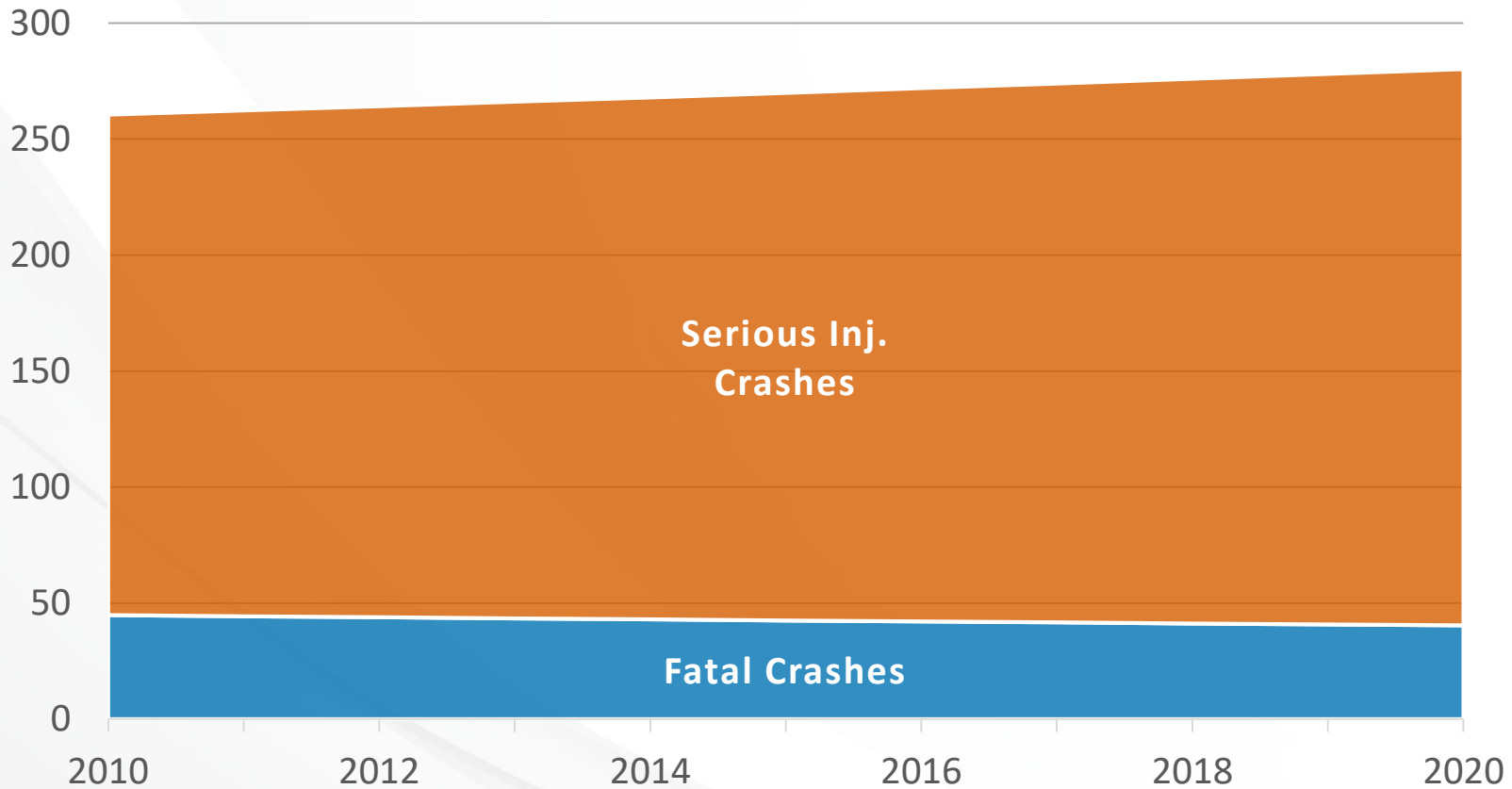
Lane Departure Crash Trends

Metro Region, 2010-2016



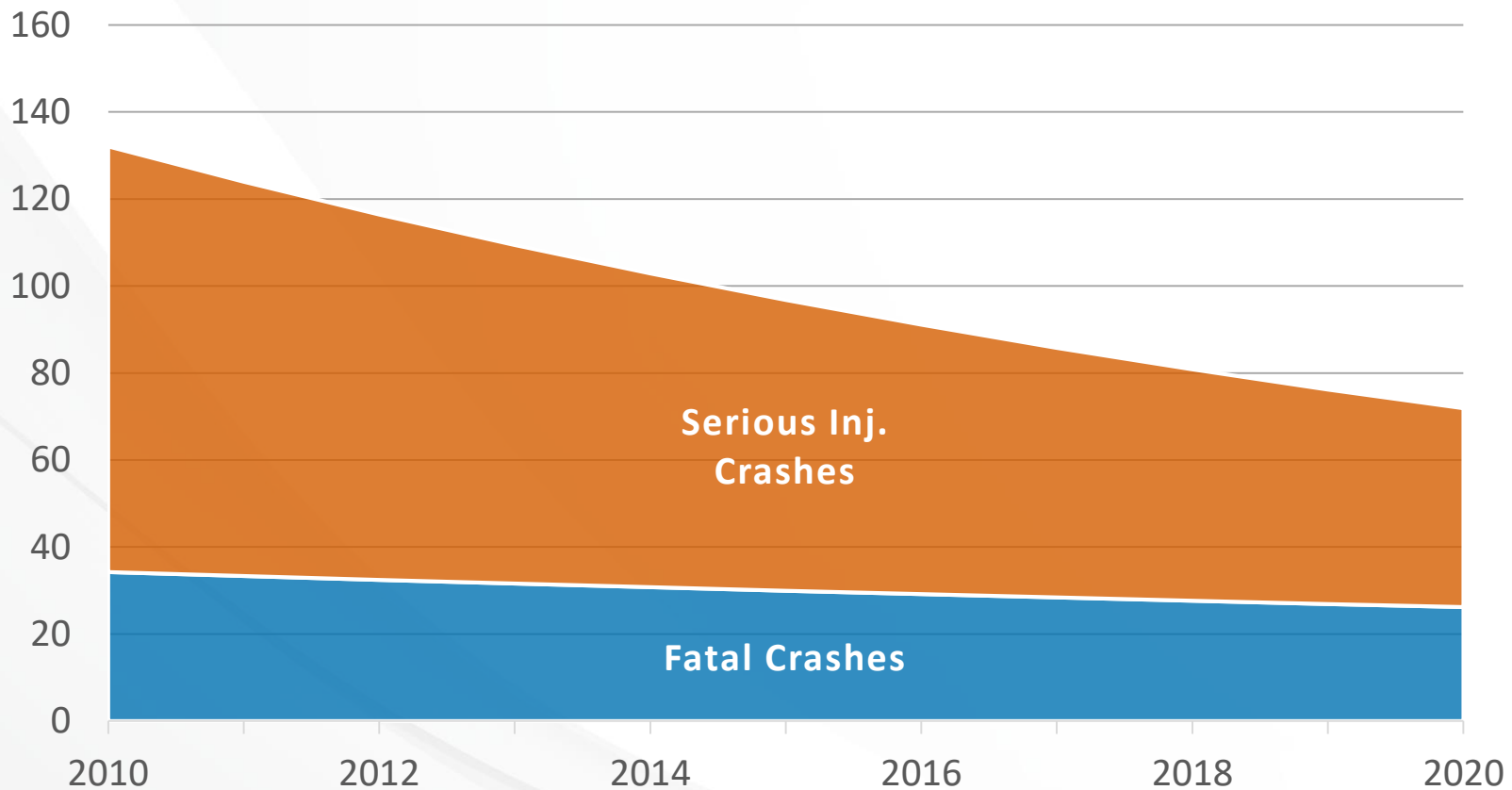
Intersection Crash Trends

Metro Region, 2010-2016



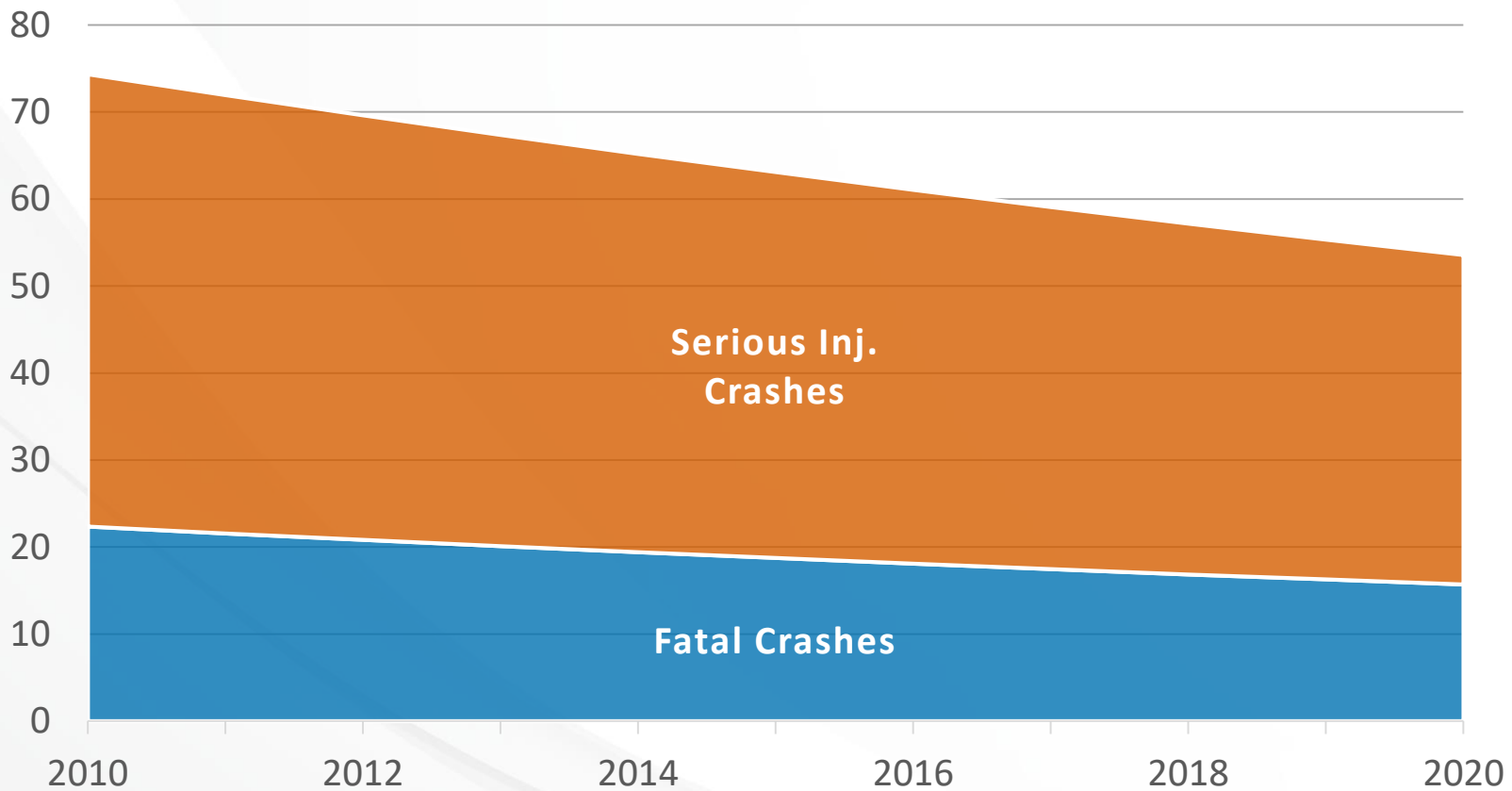
Alcohol-Related Crash Trends

Metro Region, 2010-2016



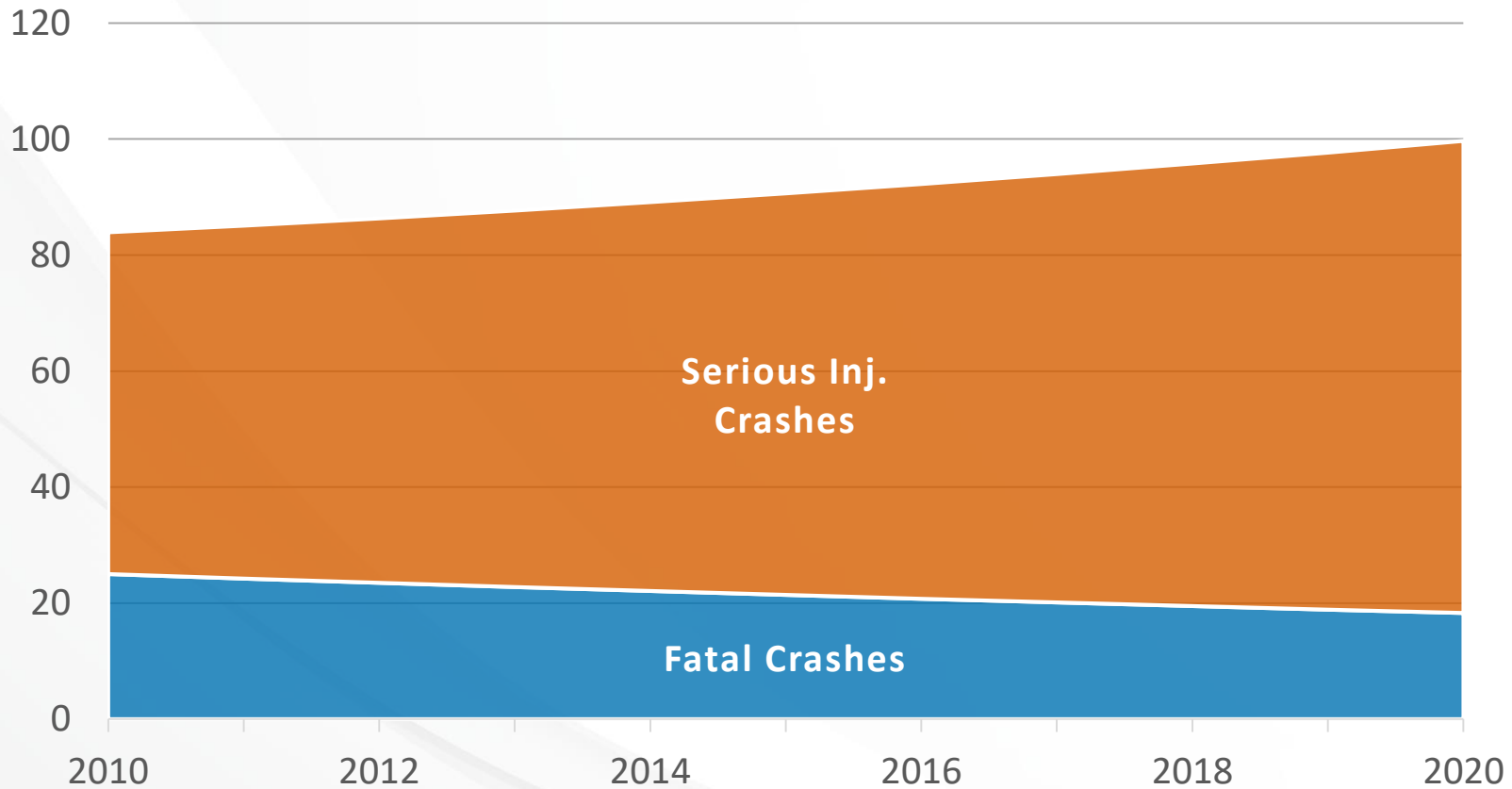
Unbelted Crash Trends

Metro Region, 2010-2016



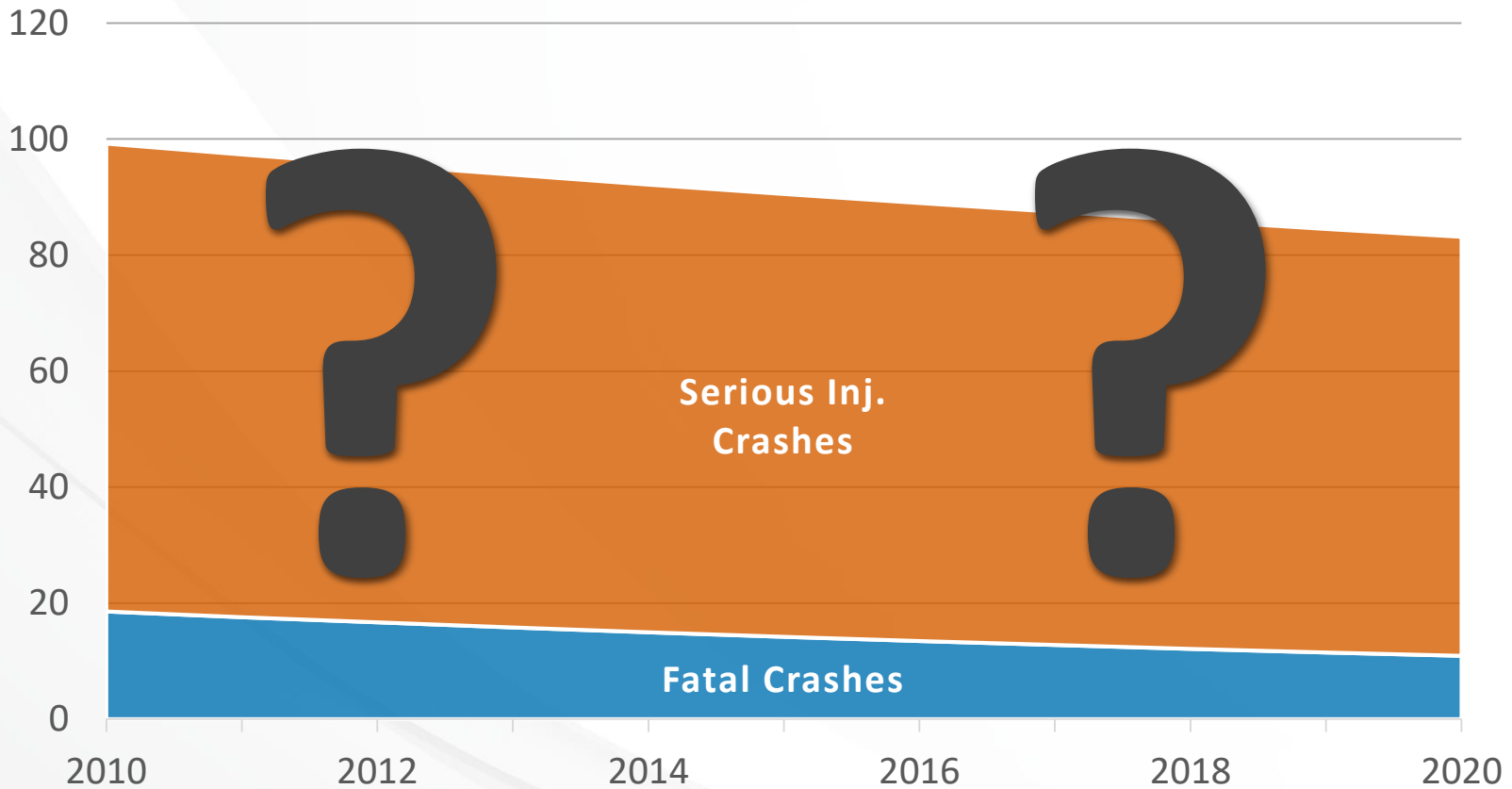
Speed-Related Crash Trends

Metro Region, 2010-2016



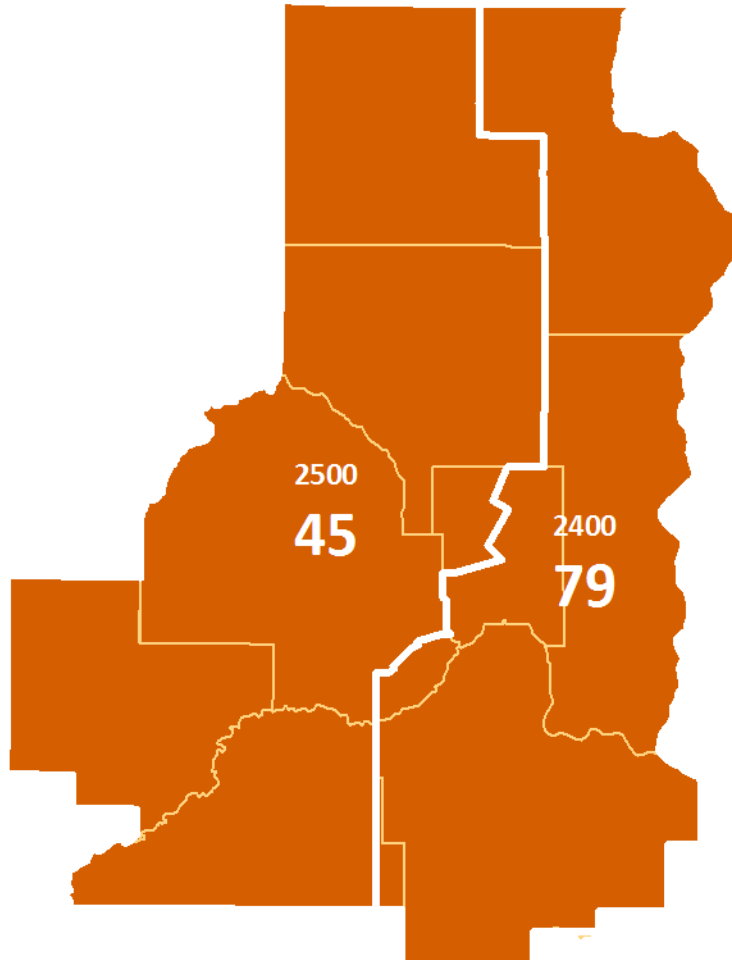
Distraction-Related Crash Trends

Metro Region, 2010-2016

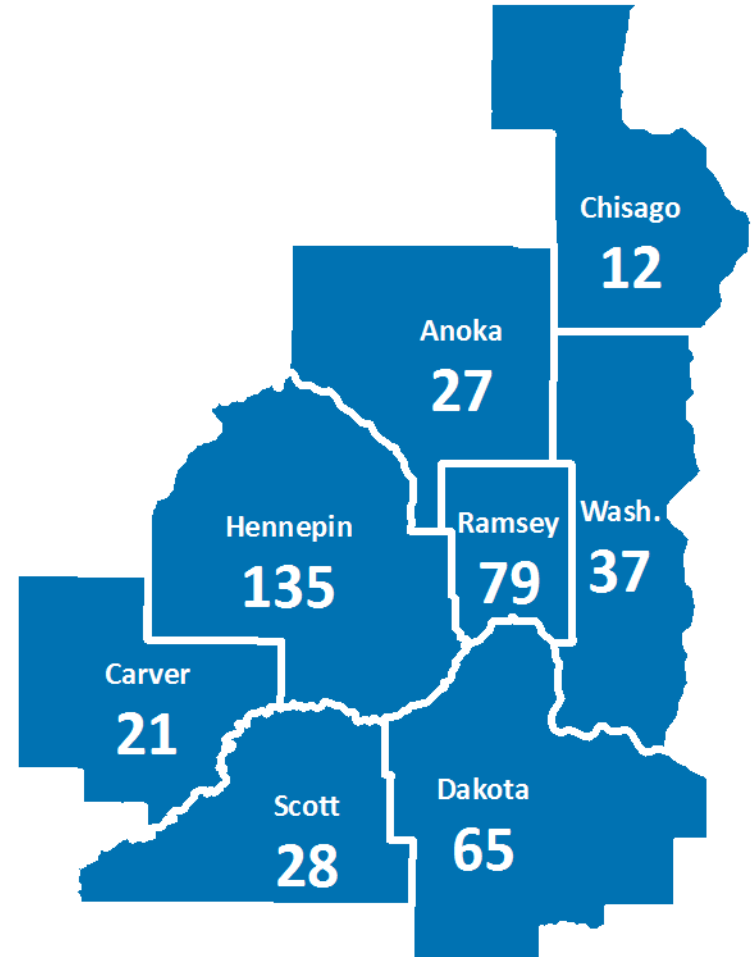


Texting Citations

April 11-17, 2016, Grant Funded On-Duty Citations



State Patrol District



Other Enforcement

Metro Summary

- **The “Big Four” remain a challenge**
 - Impairment
 - Distraction
 - Seat Belt Use
 - Speed
- **Fatalities have leveled off after years of steady decline**
 - How can the Four “Es” work together to decrease fatalities and serious injuries?

Resources

- **Minnesota Toward Zero Deaths**
 - www.MinnesotaTZD.org
- **Strategic Highway Safety Plan**
 - www.mndot.gov/TrafficEng/Safety/SHSP
- **Minnesota Crash Facts**
 - <https://dps.mn.gov/Divisions/OTS>