

TABLE 1
 DWI Incidents in Minnesota
 By County and Year
 DWI Data As Of: 3/1/2016
 (2015 Data are Preliminary)

DWI Incidents	YEAR					All
	2011	2012	2013	2014	2015	
	N	N	N	N	N	N
Aitkin	139	134	133	78	142	626
Anoka	1,453	1,392	1,188	1,150	1,093	6,276
Becker	256	250	192	232	267	1,197
Beltrami	434	298	299	288	265	1,584
Benton	153	127	140	163	163	746
Big Stone	20	42	22	23	14	121
Blue Earth	403	346	390	377	356	1,872
Brown	119	129	114	94	103	559
Carlton	247	239	178	184	172	1,020
Carver	331	310	257	304	281	1,483
Cass	224	212	201	190	154	981
Chippewa	55	58	52	50	55	270
Chisago	216	207	232	179	192	1,026
Clay	517	520	452	431	411	2,331
Clearwater	49	37	41	41	49	217
Cook	31	32	52	34	21	170
Cottonwood	70	51	56	61	51	289
Crow Wing	376	356	358	357	379	1,826
Dakota	2,060	1,813	1,616	1,606	1,628	8,723
Dodge	105	68	73	54	60	360
Douglas	216	162	152	170	152	852
Faribault	65	69	65	54	67	320
Fillmore	89	75	80	72	57	373
Freeborn	200	159	114	150	116	739
Goodhue	349	333	260	305	248	1,495
Grant	22	21	29	13	31	116
Hennepin	6,800	6,964	6,477	5,877	5,755	31,873
Houston	109	116	125	136	131	617
Hubbard	171	120	97	84	138	610
Isanti	158	159	129	151	142	739
Itasca	314	329	322	291	326	1,582
Jackson	63	81	55	42	47	288
Kanabec	113	89	88	53	50	393
Kandiyohi	231	242	194	182	180	1,029
Kittson	22	12	18	10	9	71
Koochiching	83	71	72	70	55	351
Lac Qui Parle	27	28	25	26	23	129
Lake	42	69	53	50	36	250
Lake of Woods	34	45	33	39	36	187
Le Sueur	106	93	82	88	91	460

Lincoln	22	29	24	16	12	103
Lyon	138	159	151	152	122	722
McLeod	184	149	158	159	149	799
Mahnomen	108	99	73	68	77	425
Marshall	43	49	29	28	31	180
Martin	91	89	82	88	89	439
Meeker	62	48	71	53	45	279
Mille Lacs	191	174	125	93	108	691
Morrison	156	144	168	109	97	674
Mower	275	277	267	313	267	1,399
Murray	21	25	17	19	15	97
Nicollet	169	167	113	110	115	674
Nobles	118	142	151	131	115	657
Norman	49	39	41	36	31	196
Olmsted	966	755	644	675	696	3,736
Otter Tail	299	267	315	263	270	1,414
Pennington	66	87	91	89	88	421
Pine	173	176	144	138	110	741
Pipestone	47	36	36	43	42	204
Polk	231	239	248	205	264	1,187
Pope	40	49	40	41	46	216
Ramsey	2,670	2,676	2,380	2,632	2,340	12,698
Red Lake	30	34	28	23	27	142
Redwood	91	107	83	79	73	433
Renville	126	119	78	117	100	540
Rice	331	264	217	253	231	1,296
Rock	52	34	53	44	56	239
Roseau	114	116	111	105	93	539
St. Louis	1,276	1,219	1,075	1,043	1,074	5,687
Scott	638	620	587	700	635	3,180
Sherburne	416	514	470	390	338	2,128
Sibley	42	49	70	66	95	322
Stearns	964	1,027	872	802	772	4,437
Steele	194	252	173	190	177	986
Stevens	50	42	31	41	35	199
Swift	65	59	61	51	40	276
Todd	83	103	102	102	97	487
Traverse	8	15	12	7	7	49
Wabasha	134	101	102	106	124	567
Wadena	68	65	67	59	41	300
Waseca	84	86	64	58	81	373
Washington	1,016	991	927	1,007	1,110	5,051
Watonwan	51	30	42	30	31	184
Wilkin	71	55	61	64	45	296
Winona	336	318	307	314	332	1,607
Wright	594	622	497	460	378	2,551
Yellow Medicine	83	85	60	45	52	325
All	29,508	28,660	26,034	25,376	24,719	134,297

Traffic Statistics
Minnesota, 2015
By County
(Data are Preliminary)

COUNTY	DWI's	Crashes	K's	A's
Aitkin	142	174	6	5
Anoka	1,093	3,129	11	65
Becker	267	303	1	12
Beltrami	265	376	6	7
Benton	163	549	7	6
Big Stone	14	32	1	2
Blue Earth	356	1,174	12	9
Brown	103	231	2	4
Carlton	172	350	9	13
Carver	281	1,064	6	15
Cass	154	275	4	14
Chippewa	55	102	4	5
Chisago	192	580	4	11
Clay	411	653	3	8
Clearwater	49	41	2	1
Cook	21	79	0	1
Cottonwood	51	88	6	3
Crow Wing	379	822	5	17
Dakota	1,628	5,303	11	80
Dodge	60	192	2	2
Douglas	152	501	2	7
Faribault	67	132	4	4
Fillmore	57	176	2	6
Freeborn	116	449	2	3
Goodhue	248	702	8	22
Grant	31	73	0	1
Hennepin	5,755	22,799	33	233
Houston	131	160	5	3
Hubbard	138	152	3	7
Isanti	142	352	15	7
Itasca	326	457	6	17
Jackson	47	102	6	2
Kanabec	50	90	2	5
Kandiyohi	180	589	8	8
Kittson	9	10	0	2
Koochiching	55	90	1	2
Lac Qui Parle	23	31	2	1
Lake	36	104	3	6
Lake of Woods	36	13	0	1
Le Sueur	91	318	6	4
Lincoln	12	45	0	3
Lyon	122	218	3	7
Mcleod	149	374	4	9

Mahnomen	77	29	1	1
Marshall	31	33	1	1
Martin	89	211	1	9
Meeker	45	170	4	3
Mille Lacs	108	231	4	13
Morrison	97	248	9	14
Mower	267	378	2	2
Murray	15	54	1	2
Nicollet	115	427	2	6
Nobles	115	276	3	5
Norman	31	45	3	1
Olmsted	696	2,132	14	34
Otter Tail	270	617	9	18
Pennington	88	117	3	8
Pine	110	346	9	9
Pipestone	42	40	2	2
Polk	264	287	4	9
Pope	46	84	0	1
Ramsey	2,340	10,946	18	73
Red Lake	27	11	0	1
Redwood	73	108	2	4
Renville	100	134	2	6
Rice	231	572	5	11
Rock	56	102	0	1
Roseau	93	48	0	3
St. Louis	1,074	2,856	16	47
Scott	635	1,311	7	24
Sherburne	338	962	11	26
Sibley	95	131	6	7
Stearns	772	2,369	12	26
Steele	177	497	4	5
Stevens	35	98	1	1
Swift	40	62	3	1
Todd	97	212	2	14
Traverse	7	35	0	0
Wabasha	124	180	3	3
Wadena	41	118	4	3
Waseca	81	157	1	2
Washington	1,110	2,630	12	25
Watonwan	31	103	1	3
Wilkin	45	111	0	5
Winona	332	508	1	24
Wright	378	1,261	8	30
Yellow Medicine	52	68	4	4
All	24,719	74,769	412	1,127

STRATEGIC DIRECTION

→ **STATEWIDE GOAL:** Fewer than 300 traffic-related fatalities—and fewer than 850 serious injuries—by 2020

VISION

To reduce fatalities and serious injuries on Minnesota's roads to zero

MISSION

To create a culture for which traffic fatalities and serious injuries are no longer acceptable through the integrated application of education, engineering, enforcement, and emergency medical and trauma services. These efforts will be driven by data, best practices, and research.

→ **GOAL 1:** Pursue public support of traffic safety as a priority

Strategies

- *Establish a traffic safety culture action team*
- Increase public awareness
- Coordinate effective policy and legislation
- Engage the media in traffic safety messaging

→ **GOAL 2:** Strengthen TZD as a priority for all units of government and traffic safety partnerships

Strategies

- *Urge state agencies and local jurisdictions to make TZD a part of their culture and responsibility*
- *Engage the court system as a traffic safety partner*
- Promote agency-to-agency collaboration
- Implement TZD communications to engage partners and stakeholders
- Increase and diversify participation in TZD programs and events

→ **GOAL 3:** Promote and implement effective traffic safety initiatives

Strategies

- *Implement the 2014 Strategic Highway Safety Plan*
- Improve the traffic safety records system across all disciplines
- Update district and county safety plans and monitor implementation
- Leverage Minnesota's trauma system to ensure timely treatment
- Increase collaboration among law enforcement agencies on all state and local roads
- Advance new technologies and innovations
- Adopt and implement best practices

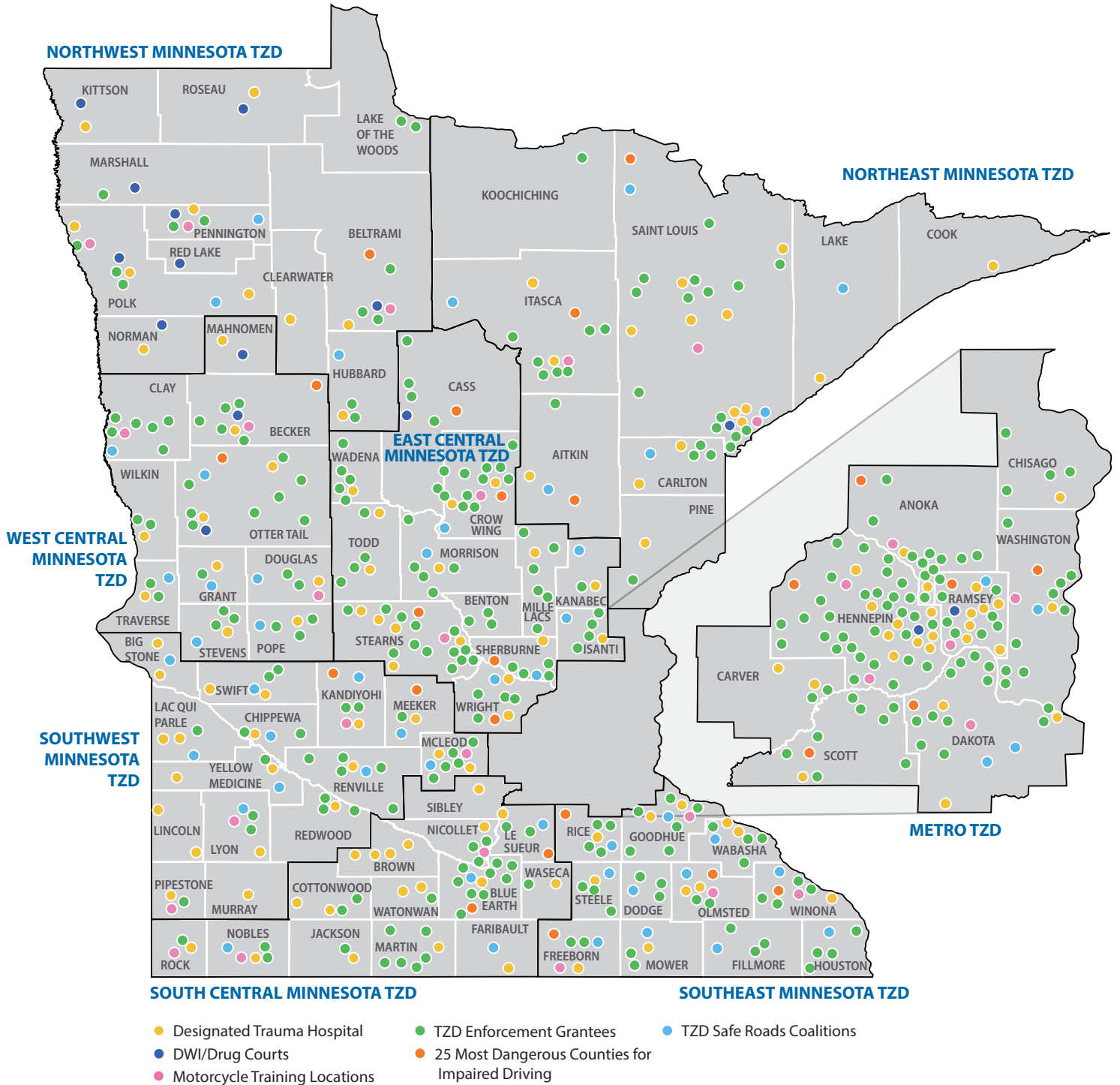
Italics signify priority strategies for 2016

VALUES

- Continuous improvement
- Engaged partners
- Evidence-based approaches

MINNESOTA
TOWARD ZERO DEATHS
TOWARD ZERO DEATHS

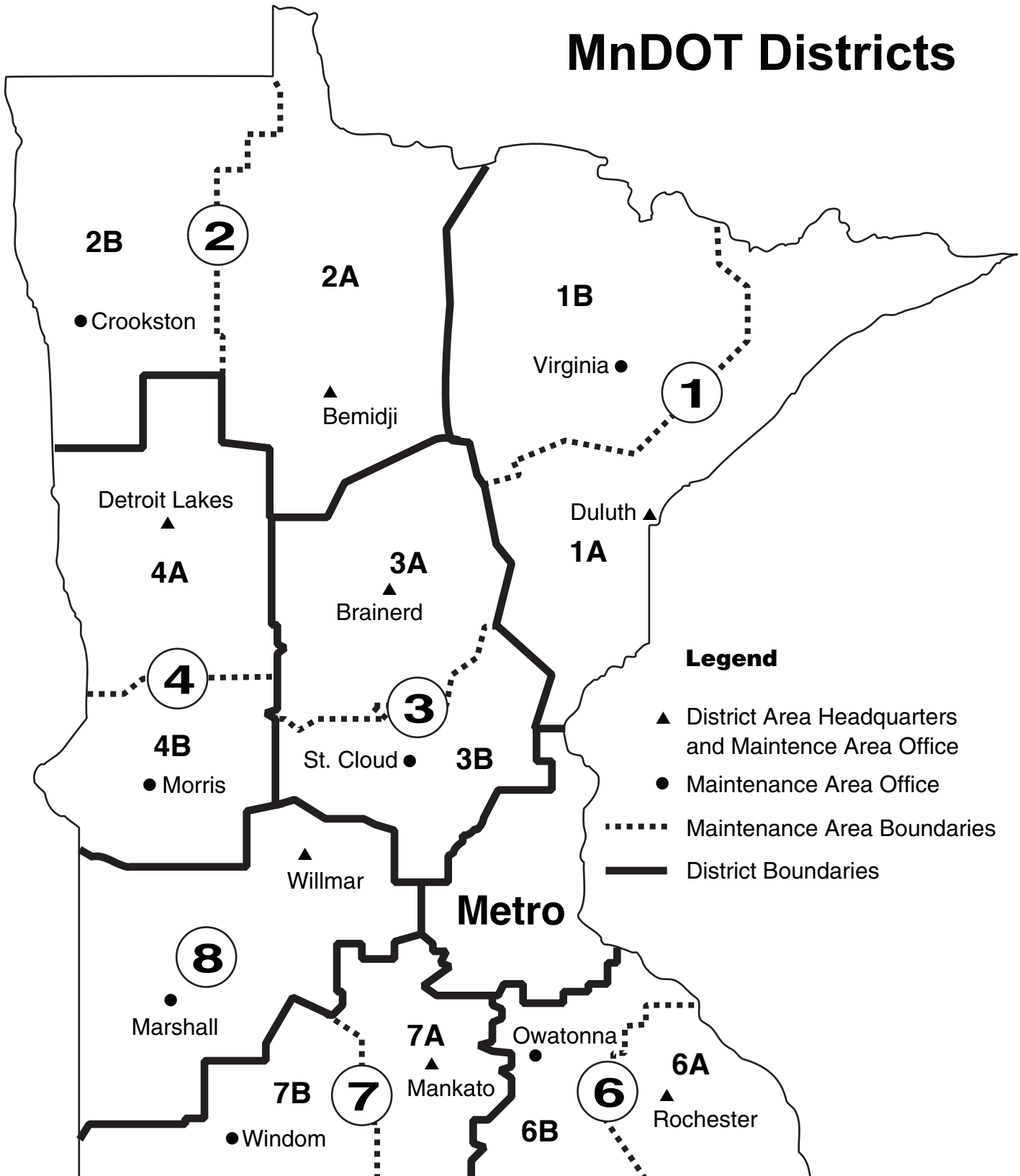
Local Minnesota Traffic Safety Initiatives



www.MinnesotaTZD.org/initiatives



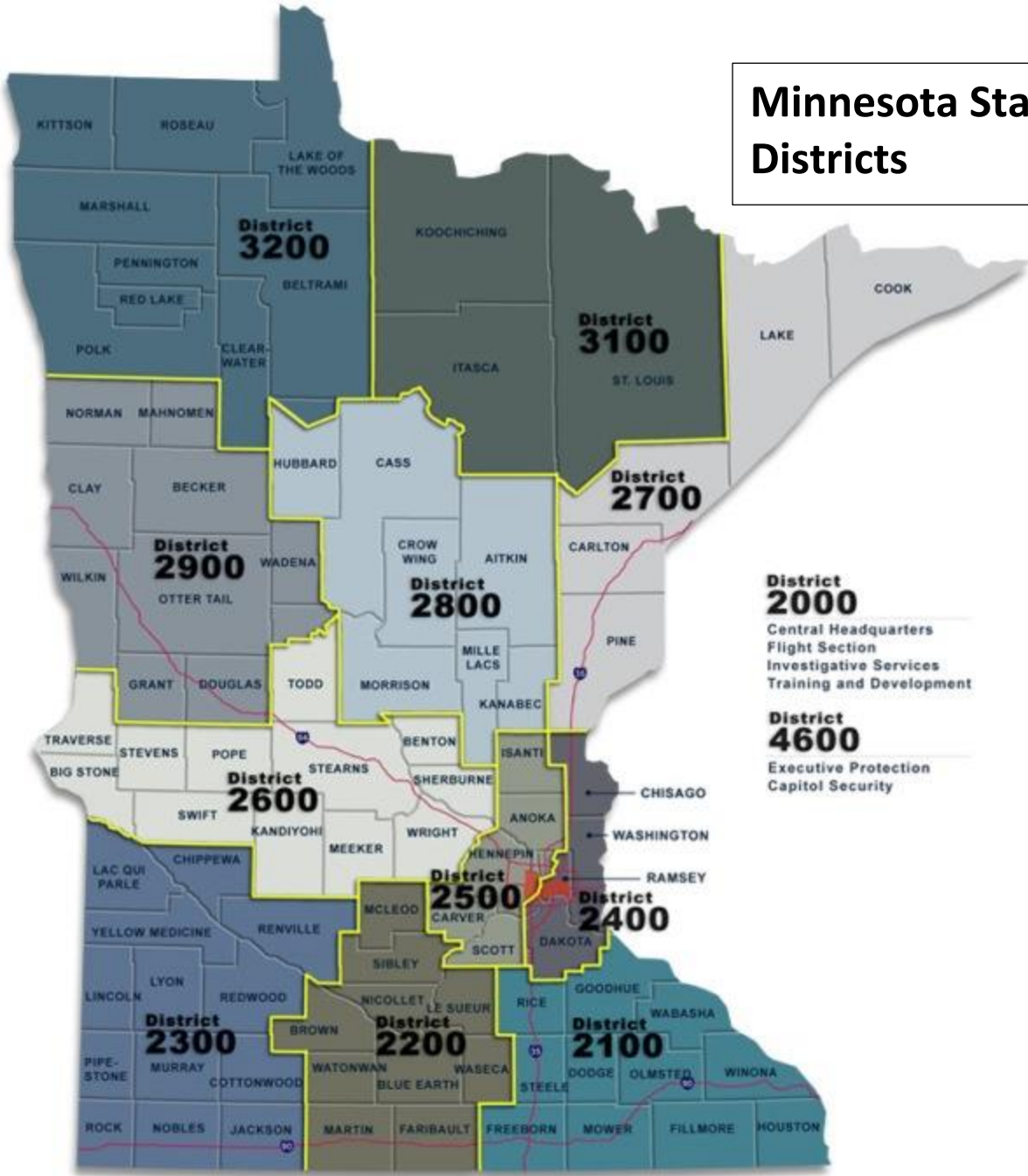
MnDOT Districts



Legend

- ▲ District Area Headquarters and Maintenance Area Office
- Maintenance Area Office
- Maintenance Area Boundaries
- District Boundaries

Minnesota State Patrol Districts



Mark Your Calendars

2016
Minnesota
Toward Zero Deaths Conference

November 16-17, 2016

Duluth, MN

Duluth Entertainment Convention Center

Annual Statewide Conference for Traffic Safety Stakeholders

This conference provides a forum to share information on best practices in engineering, enforcement, education, and emergency medical and trauma services, and to identify new approaches to reducing the number of traffic fatalities and life-changing injuries on Minnesota roads.

Who Should Attend

- Attorneys
- Child Passenger Safety Advocates
- City and County Engineers
- Departments of Transportation, Public Safety, and Health Employees
- Driver Educators
- Drug Recognition Experts
- EMS and Health Care Personnel
- Judges
- Law Enforcement Officials
- Local and State Elected Officials and Public-Sector Employees
- Members of the Court System
- Probation Staff
- Public Health Officials
- Safe Communities Coalitions
- Traffic Safety Stakeholders

At this Conference you will ...

- explore best practices for establishing traffic safety coalitions
- find out what's new in law enforcement on traffic safety
- get the latest on traffic engineering techniques for improving safety
- hear about challenges for EMS in rural communities
- interact with leaders from other disciplines to learn how all 4 Es can best work together
- learn about CPS technical updates and earn continuing education credits
- discover new ideas through research
- learn about how technology can affect the courtroom

... and much more!

Credit

PDH, POST, CEU, and CLE credits will be available for attendance at this conference.

Registration and Further Information

A conference brochure with a detailed program schedule and registration materials will be distributed in summer 2016. For more information, email cceconf5@umn.edu or visit TZD's website at:

www.minnesotatzd.org

Sponsored by



With support from the National Highway Traffic Safety Administration