



**TOWARD  
ZERO**



**DEATHS**  
**STEARNS & BENTON**

FROM THE  
EAST  
CENTRAL  
WORKSHOP  
2016 UNTIL  
TODAY....

ONE YEAR OF FUN  
WITH TRAFFIC SAFETY!

FIRST INTRODUCING OURSELVES TO THE PUBLIC...



**THANK YOU!**


We believe good people making good choices  
deserve recognition.

**THANK YOU** for being a responsible driver!

Find us on Facebook  
[fb.me/MNTZDStearnsBenton](https://fb.me/MNTZDStearnsBenton)

**HAPPY NEW YEAR**



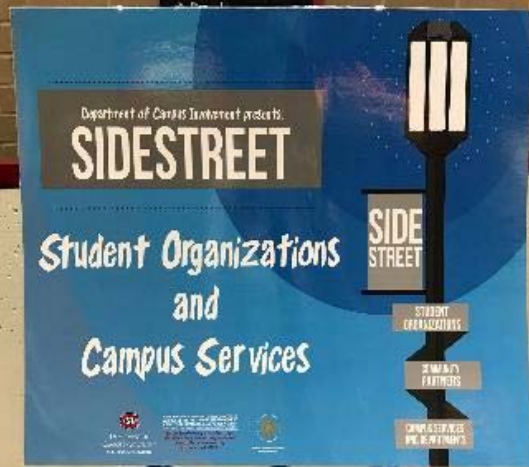


HELP US REACH A GOAL OF  
**ZERO FATALITIES**  
ON STEARNS & BENTON COUNTY ROADS!

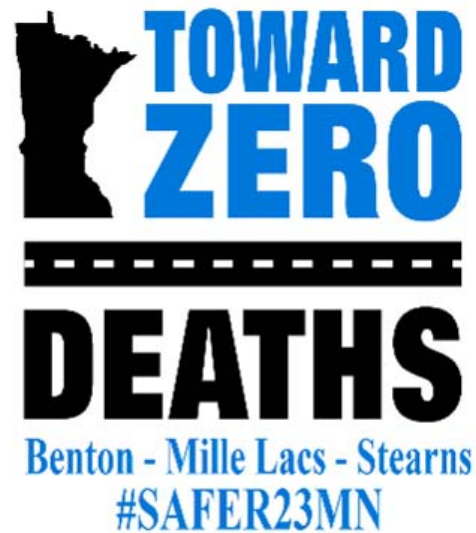
JOIN US ON FACEBOOK!  
[@MNTZDSTEARNSBENTON](https://www.facebook.com/MNTZDSTEARNSBENTON)



# MN TZD STUDENT ORGANIZATION ON SCSU CAMPUS



# HWY 23 CRASH REDUCTION PROJECT... RICHMOND TO MILACA



Hwy 23 Message Monday Campaign  
#safer23MN



# HWY 23 RECRUITMENT, COMMUNITY COLLABORATIONS & AWARENESS...

**Showcase 2017**  
**kenny ahern**  
**to laugh is to live!**  
**FREE ADMISSION**

kennyahern.com

January ahern's shows are filled with AMAZING comedy, wit, HILARIOUS photos of family and FUN audience participation!

**Saturday March 18**  
 3-4PM - 7-9PM on the HIGHWAY 23 Safety Show

Business & Nonprofit Booths  
 Exhibits & Demonstrations  
 Free Family Entertainment  
 Ziegler Cat Simulator courtesy of Kraemer Trucking and Excavating  
 Door Prize Drawings **FREE ADMISSION!**  
 Food

For more info, visit:  
**www.ColdSpringMN.com**

Brought to you by the Cold Spring Area Chamber of Commerce and these great sponsors:



## HELP US MAKE HIGHWAY 23 SAFER.

We believe that working together, as a community, we can make a difference to eliminate serious injuries or fatalities on Highway 23. Over 2,000 car crashes have occurred on this short stretch of highway in just 4 years and has impacted us all in one way or another.

### Behind the wheel, have you...

- Glanced at your phone to read an email or text?
- Changed the location on your navigation system?
- Turned around to observe your child in the backseat?
- Unwrapped a sandwich or burger?

If you answered **YES** to any of these questions, we are asking you to change your driving habits and be part of the solution to reduce crashes on Highway 23.

**TAKE ACTION TO STOP DISTRACTION.**

## LEADING CAUSES OF CRASHES ON HIGHWAY 23:

### 1. Distracted Driving

We have all witnessed this behavior and probably done some ourselves. Is that next text worth a life? What can you do to help? All you need to do is pay attention to your driving. You will be aware of what you are doing and more prepared for what others are doing around you.

### 2. Failure to Yield

To yield the right-of-way you must scan the area around you; look left, look right, look ahead and scan to your left again. Failing to yield to pedestrians or other drivers often results in serious injury or fatalities. Speeding and distraction are contributing factors of failure to yield.

### 3. Following too Close

Have you ever had to slam on your breaks to avoid the car in front of you? 3 factors affect how long it takes to stop a vehicle. Perception Distance, Reaction Distance, and Braking Distance. Increase your following distance and don't tailgate.

### 4. Illegal or Unsafe Speed

We all know that driving above the posted speed limit or driving too fast for existing conditions is dangerous. Do the right thing by watching your speed and slow down especially in bad weather.

By paying attention and following safe driving rules, you can reduce your chances of being in a crash. Wearing your seatbelt will reduce your chances of injury or fatality if you are involved in a crash.

**Thank you for being a partner in keeping Highway 23 safer!**

### Your traffic safety partners



**Back The Blue & Support Your Local Hero's**  
**May 27th, 2017**  
**At Viking Land Harley-Davidson®**  
**3555 Shadowwood Dr. NE, Sauk Rapids**

**Bring the whole family from 9am-4pm**  
**Help us Support our local Hero's!**  
**We will have tons of stuff for the kids to do and see!**  
**From a SWAT truck, Fire Engines, Ambulance and so much more! This is a must see event!**  
**Plus kick off the afternoon with live music at Rolie's**  
**All donations made will be donated to the departments who participated in today's event!**

**Special Thanks to**  
**Benton County \* Stearns County \* Sherburne County**  
**St. Cloud PD \* Sauk Rapids Fire \* Sauk Rapids PD \* St. Cloud Fire**  
**Sartell/St. Stephen Fire \* Watie Park PD \* Rice PD \* Gold Cross**  
**St. Cloud Public Safety Foundation**  
**Brian D. \* Bob & Cindy Hems \* Geyer Signal**  
**Cash Wise Liquor \* Nelson Sanitation**





**ENOUGH TRAGEDY.**

**#SAFER23MN**



↑ Billboard donated by Franklin Advertising:  
located on Hwy 23 in Benton County near Mimbach Fleet

← Window clings for business support



# COALITION AND HWY 23 KICKOFF EVENT: APRIL 27<sup>TH</sup>, 2017

IT WAS A FRIGID 30 DEGREES... AND STILL AMAZING!

## TOWARD ZERO DEATHS COALITION and HWY. 23 CRASH REDUCTION INITIATIVE Kickoff Event

April 27 • 3-7 p.m.

CentraCare Health Plaza  
1900 CentraCare Circle • St. Cloud, MN 56303  
*(parking lot at the south end of CentraCare Circle)*

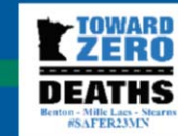


Fun for all ages!

- LifeLink III helicopter
- impaired driving simulation/pedal carts
- rollover simulator
- ambulance
- fire truck
- car seat education
- learn about a project to reduce crashes on Hwy. 23 from Milaca to Richmond.
- much more!

**CRASH  
REDUCTION  
PROJECT  
AREA**  
**HWY 23  
INITIATIVE**

Sponsored by:







All emergency agencies from Richmond to Milaca participated:

Minnesota State Patrol

Stearns County Sheriff's Office, Benton County Sheriff's Office, Mille Lacs County Sheriff's

Richmond/Cold Spring PD, Waite Park PD, St. Cloud PD, Foley PD, Milaca PD

CentraCare Health Ambulance, SCFD, LifeLinkIII













## TRAILER DONATION TO THE COALITION FOR COMMUNITY EVENTS

## WHO WE ARE...

Benton County Public Health  
Benton County Public Works/Engineering  
Benton County Sheriff's Office  
CentraCare Health Emergency Medical Services  
CentraCare Health, St. Cloud Hospital Trauma Services  
Central Minnesota Council on Aging  
Central Minnesota Emergency Medical Services  
Cold Spring Chamber of Commerce  
Cold Spring/Richmond Police Department  
College of St. Benedict's and St. John's  
Foley Police Department  
Foley Fire Department  
Granite Community Bank-Cold Spring  
Gold Cross Ambulance  
Life Link III  
Milaca Police Department  
Mille Lacs County Sheriff's Office  
Mille Lacs Safe Roads Coalition  
Minnesota Department of Public Safety



Minnesota Department of Transportation  
Minnesota Highway Safety Center  
Minnesota State Patrol  
Minnesotan's Fighting Against Distracted Driving  
Mothers Against Drunk Driving  
Rice Police Department  
Sartell Police Department  
Sauk Rapids Police Department  
Senior Traffic Safety Education  
State Farm- Kristen Stebbins  
St. Cloud City Attorney's Office  
St. Cloud Fire Department  
St. Cloud Police Department  
St. Joseph Police Department  
Stearns County Attorney's Office  
Stearns County Highway Engineering  
Stearns County Public Health  
Stearns County Sheriff's Office  
Waite Park Police Department