

**East Central Minnesota Toward Zero Deaths  
4<sup>th</sup> Annual Regional Workshop  
MnDOT Training Facility, 3725 12th St. N.  
St. Cloud, Minn.**

**May 16<sup>th</sup>, 2016**

- 8 a.m.                   **Registration & Continental Breakfast**
- 8:30 a.m.               **Welcome & Regional Accomplishments**  
*Dan Anderson, District engineer, MnDOT District 3 and TZD regional co-chair;  
Tom Nixon, East Central Minnesota regional TZD coordinator; and  
Kristine Hernandez, Statewide TZD program coordinator.*
- 9:15 a.m.               **Critical crash management – Auto-Launch and resource dispatching**  
*Matt Jakubik, NREMTP North Memorial, Rob Pearson, NREMTP North Memorial, Dr.  
Pat Lilja North Memorial*  
*When a crash occurs, time is a variable we cannot avoid. How can you contribute to  
the expediting of patients off crash scenes and to the appropriate care? Through the  
use of case reviews, we can see how this impacts the outcomes of the patients and  
responder safety.*
- 9:45 a.m.               **Break**
- 10 a.m.                   **Regional TZD Crash Facts overview**  
*Minnesota State Patrol Lt. Joe Dwyer*  
*Through case studies highlighting contributing factors in local crashes, participants  
will see how crash data directly relates to actual incidents.*
- 10:30 a.m.             **2015: What happened?**  
*University of Minnesota Center for Transportation Studies representatives*  
*Last year, we reviewed data and discussed new topics, how did that change your  
local traffic safety? Together we will do a short review of last year’s workshop and  
priorities. Then we will work in small groups to discuss what has been done locally,  
can be done locally and report back. A list of guiding questions will help all “4-Es”  
develop a summary.*
- 11 a.m.                   **The MNCrash Record System**  
*Kathleen Haney, Traffic Records coordinator, DPS Office of Traffic Safety*  
*This newly launched state crash record system has more crash data collection for  
input, providing data reporting capabilities for both agencies and the public. In  
addition, MNCrash will allow you to select a location on a map and it will  
automatically fill location attributes including county, city/township, route system,  
street names, X and Y coordinates and MnDOT specific elements.*

- 11:30 a.m.      **Personal Impact Statement**  
*As a parent, Deb Hadley will share the details of how a crash has changed her life as well as the close-knit community and the first responders. Tyler, Deb's son, died in crash not far from home, along with three other friends in March of 2014 in Sleepy Eye, Minnesota.*
- 12 p.m.      **Lunch & Exhibits**
- 12:45 p.m.      **What's New?**  
*Presenters: Lt. Jim Mortenson, St. Cloud Police Dept.; Melissa Hjelle, Injury Prevention Specialist CentraCare Trauma Services; Jodi Teich, PE Stearns County engineer*  
*If you are working in traffic safety, here are the topics you need. This presentation will cover what is new from the "4-Es." From new infrastructure to new ways to prevent trauma, as well as the latest enforcement efforts and education priorities – such as the new LRRB Teen Tool Kit that everyone can use. This will be the building blocks for 2016.*
- 1:30 p.m.      **The Future of Transportation**  
*Janelle Borgen, PE, WSB Consulting; and Mike Kronzer, PE, MnDOT Office of Traffic Safety and Technology*  
*The future is something many of us think about and attempt to prepare for its arrival. Much of the future seems beyond belief, but we have to be aware of what could be coming sooner than anticipated. This interactive presentation will engage attendees in what is on the "up and coming" as well as ideas on how to prepare or respond.*
- 2:15 p.m.      **2016 Action Planning**  
*University of Minnesota Center for Transportation Studies representatives*  
*After all of the information shared throughout the day, what can you contribute to identifying as both the action items the region and what local stakeholders should engage? In groups, attendees will work through the data and what has been presented to develop 2016 priorities for education and targeting risk. What is the data showing and who do we need to reach? After we identify who we need to reach, then the discussion will turn to how to implement steps to induce change.*
- 3 p.m.      **Wrap up & Adjourn**  
*Minnesota State Patrol, Lt. Tom Schmitz*

*Please take time throughout the day to visit the traffic-safety exhibit tables for reference materials and ideas to implement in your communities.*

**EAST CENTRAL TZD REGIONAL WORKSHOP  
EVALUATION FORM**

MnDOT Training Center, St. Cloud, MN  
May 16, 2016

Please take a few minutes to complete the following survey. Your comments, opinions and suggestions are very important to us. With your feedback we can better understand the needs of our participants and ensure the quality of future programs.

**Please evaluate how informative and interesting the sessions were to you by placing a check in the box that best describes your opinion.**

<b>General Sessions</b>	<b>Excellent (4)</b>	<b>Good (3)</b>	<b>Fair (2)</b>	<b>Poor (1)</b>	<b>Did Not Attend</b>
Welcome & Regional Accomplishments					
Critical crash management – Auto-Launch and resource dispatching					
Regional TZD Crash Facts Overview					
2015: What Happened?					
The MNCrash Record System					
Personal Impact Statement					
What's New?					
The Future of Transportation					
2016 Action Planning					
Wrap Up & Adjourn					

**Comments on the general sessions:** \_\_\_\_\_  
 \_\_\_\_\_  
 \_\_\_\_\_  
 \_\_\_\_\_

**Please evaluate the following aspects of the workshop by placing a check in the box that best describes your opinion.**

<b>Arrangements</b>	<b>Excellent (4)</b>	<b>Good (3)</b>	<b>Fair (2)</b>	<b>Poor (1)</b>
Convenience of the registration process				
Location of the MnDOT Training Center				
Facilities were comfortable and appropriate for the workshop				
Food served for meals and breaks was satisfying				
Participant materials were helpful and useful				
How beneficial are the mounted regional crash maps provided to each county?				
How useful was the e-packet?				

**Comments on the arrangements:** \_\_\_\_\_  
 \_\_\_\_\_  
 \_\_\_\_\_  
 \_\_\_\_\_

**Do you have suggestions for topics you would like to see offered at future workshops? \_\_\_\_\_**

---

---

**What are your suggestions for building and maintaining support for this region's Minnesota TZD initiative: \_\_\_\_\_**

---

---

---

**Any other comments or suggestions are welcome.**

---

---

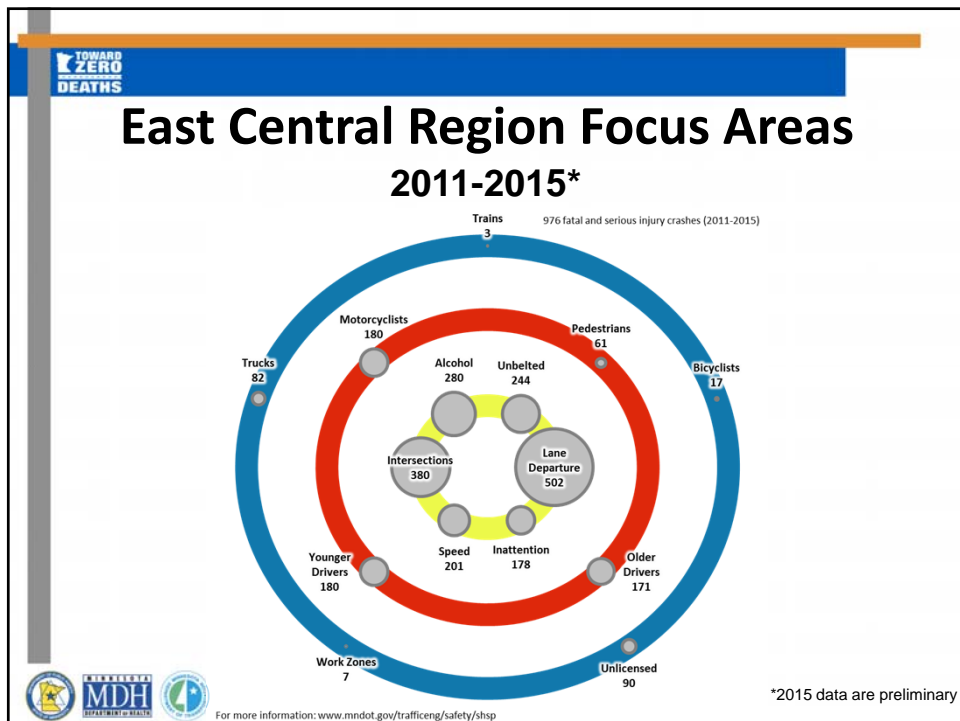

---

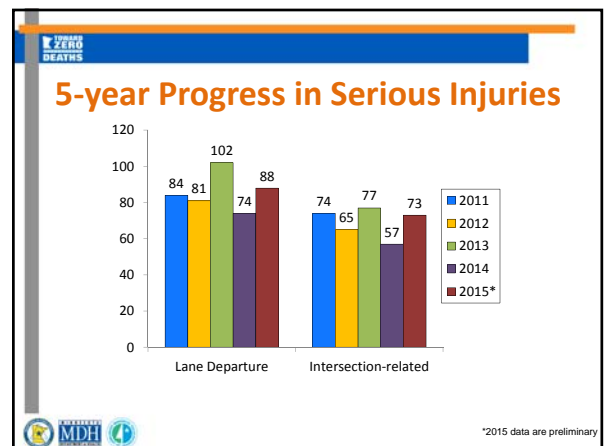
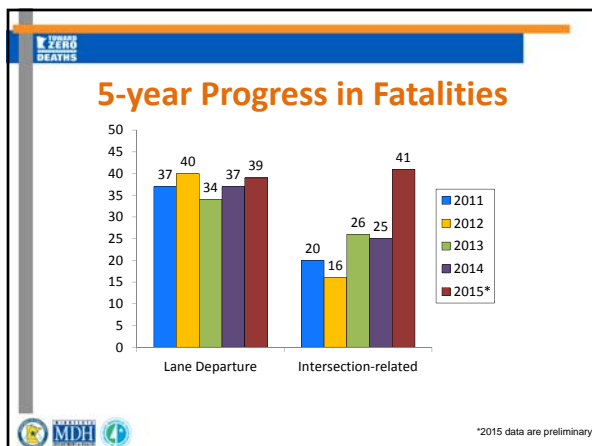
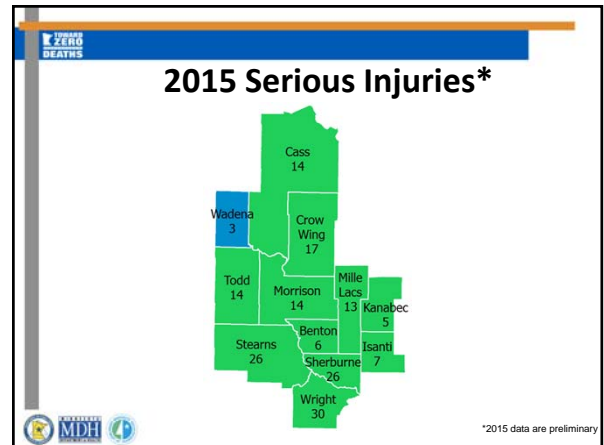
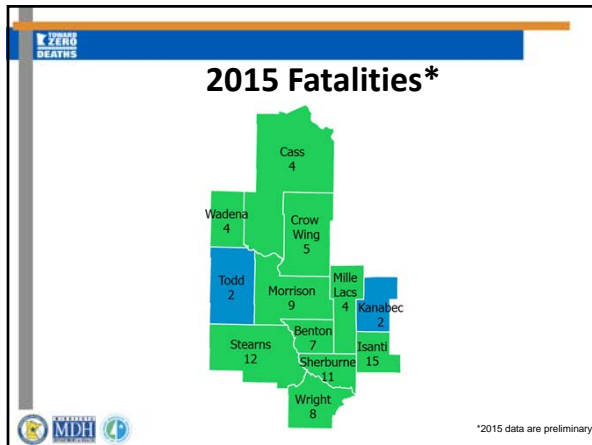
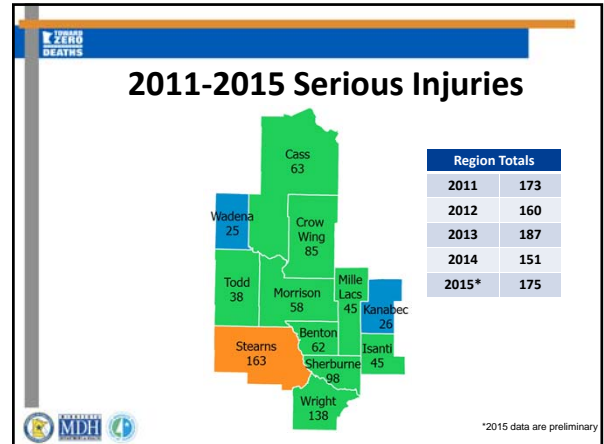
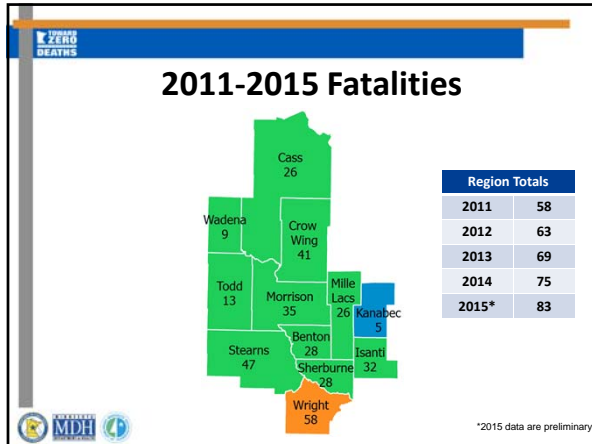
*Thank you for your time.  
Please return your completed evaluation to the registration table  
or fax to Kaydee Kirk at (612)625-6381.*

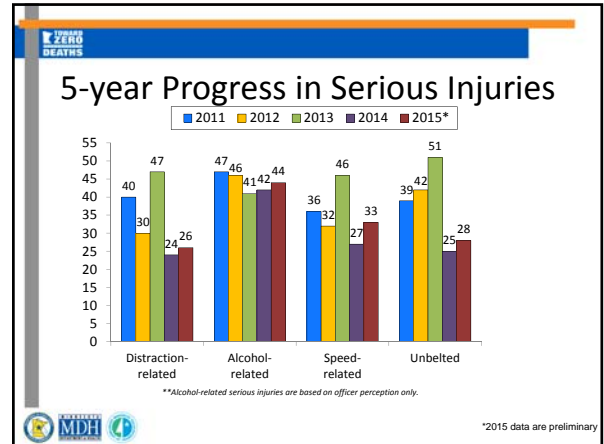
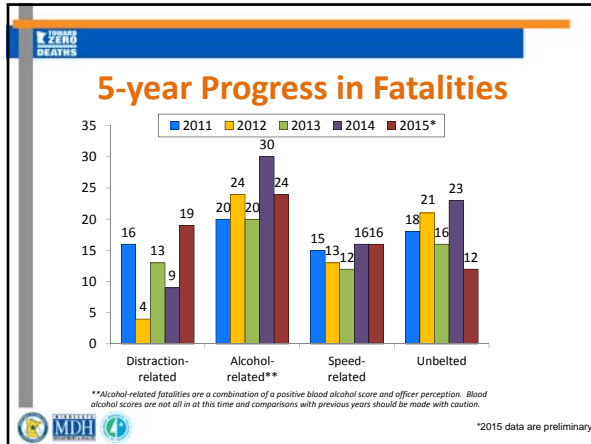
**TOWARD ZERO DEATHS**  
Because your life counts

# East Central Minnesota Regional Crash Data

May 16, 2016







### Key Findings for 2015\*

#### East Central Region

- Females ages 15-24 are overrepresented in serious injuries and fatalities, most closely followed by males 50-64
- 6.9 fatalities per month
- 14.6 serious injuries per month
- Distraction-related and unbelted fatalities and serious injuries crashes are decreasing

\*2015 data are preliminary

### Key Findings for 2015\*

#### Successes!

- 2 Counties with TWO fatalities
- 1 County with THREE serious injuries

#### Challenges

- Alcohol and speed remain a challenge

\*2015 data are preliminary

### Resources

- **Minnesota Toward Zero Deaths**
  - <http://www.MinnesotaTZD.org>
- **Strategic Highway Safety Plan**
  - <http://www.dot.state.mn.us/TrafficEng/Safety/SHSP>
- **Minnesota Crash Facts**
  - <https://dps.mn.gov/Divisions/OTS>

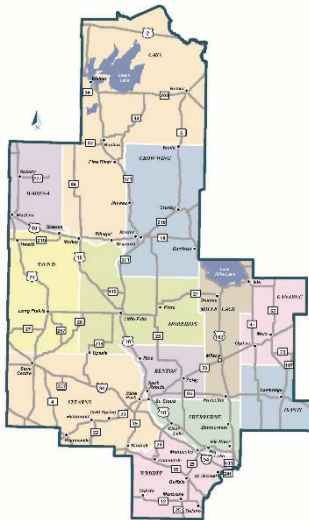
\*2015 data are preliminary

## Mission:

To create a culture for which traffic fatalities and serious injuries are no longer acceptable through the integrated application of education, engineering, enforcement and emergency medical and trauma services. These efforts will be driven by data, best practices and research.

## Values:

- ❖ Continuous Improvements
- ❖ Engaged Partners
- ❖ Evidence-based Approaches

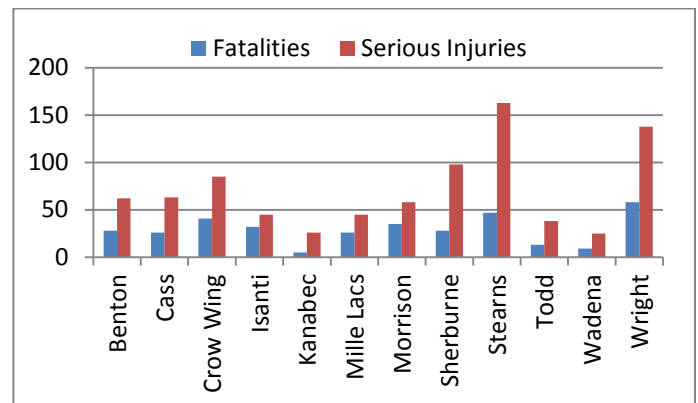


The East Central Minnesota Toward Zero Deaths (TZD) program is new this year. The counties involved include: Benton, Cass, Crow Wing, Isanti, Kanabec, Mille Lacs, Morrison, Sherburne, Stearns, Todd, Wadena, Wright

The leading cause of deaths and severe injuries in East Central Minnesota include:

- ❖ **Lack of Seatbelt Use**
- ❖ **Impaired Driving**
- ❖ **Speed and Aggressive Driving**
- ❖ **Inattentive Driving**

**East Central Minnesota Fatal and Serious Injuries by County (2011-2015)**



The leading type of crash resulting in deaths and severe injuries include:

- ❖ **Run off the Road**
- ❖ **Impaired Driving**

The East Central Minnesota TZD program is led by a steering committee comprised of the "4 E's:"

- ❖ Enforcement
- ❖ Engineering
- ❖ Education
- ❖ EMS / Emergency and Trauma Services

## East Central Minnesota TZD Leadership Contacts

### Engineering

Dan Anderson  
MnDOT District Engineer  
218-828-5703  
daniel.d.anderson@state.mn.us

### Enforcement

Captain Sean Meagher  
Minnesota State Patrol  
218-828-2403  
sean.meagher@state.mn.us

### Education/EMS

Tom Nixon  
East Central TZD Coordinator  
218-828-5830  
thomas.nixon@state.mn.us

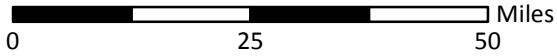


# East Central TZD Region

## Fatal and Serious Injury Crashes, 2011-2015

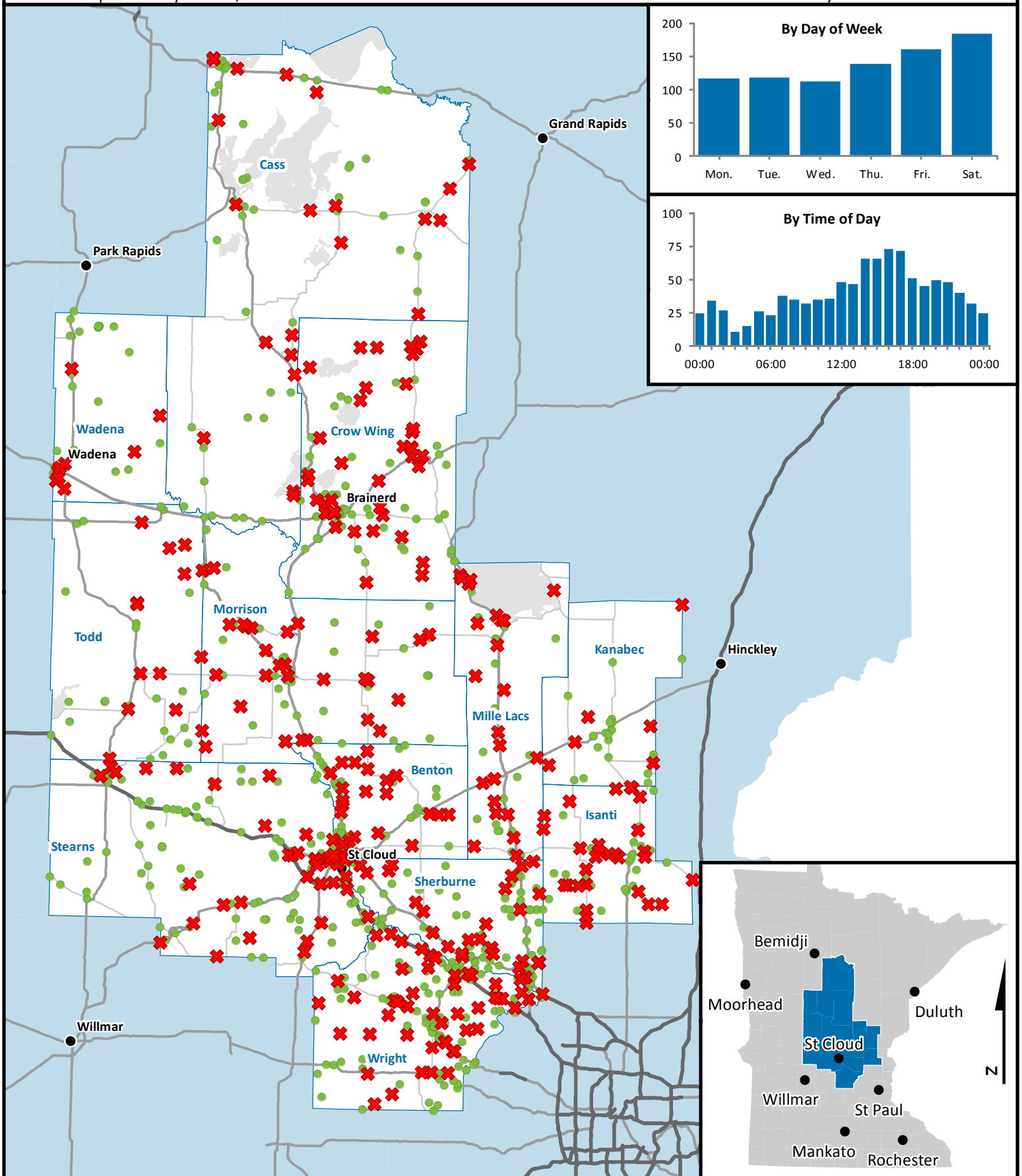


- ✕ Fatal Crash
- Serious Injury Crash



2015 data preliminary: March, 2016.

Not all crashes may be visible at this scale.



## East Central TZD Region Crash Data, 2011 to 2015\*\*\*

County	Injuries		Distracted		Alcohol		Speed		Unbelted	
	Killed	A Inj.	Killed	A Inj.	Killed	A Inj.	Killed	A Inj.	Killed	A Inj.
Benton	28	62	6	15	9	15	3	13	6	12
Cass	26	63	4	9	12	24	10	13	9	26
Crow Wing	41	85	9	16	15	21	5	14	10	20
Isanti	32	45	7	9	9	9	7	11	6	11
Kanabec	5	26	2	7	1	4	1	5	0	5
Mille Lacs	26	45	3	9	11	14	5	14	8	17
Morrison	35	58	6	12	9	20	8	15	9	12
Sherburne	28	98	1	16	7	24	9	16	3	7
Stearns	47	163	11	41	16	42	14	27	16	25
Todd	13	38	3	7	8	14	1	12	6	16
Wadena	9	25	1	2	4	9	1	7	3	11
Wright	58	138	8	24	17	24	8	27	14	23

County	Lane Departure		Intersection		Motorcyclist		Pedestrian		Bicyclist	
	Killed	A Inj.	Killed	A Inj.	Killed	A Inj.	Killed	A Inj.	Killed	A Inj.
Benton	14	25	14	33	4	10	5	4	0	1
Cass	17	44	6	15	1	5	2	2	1	0
Crow Wing	23	42	12	32	14	15	0	3	1	2
Isanti	16	11	14	24	9	12	2	0	1	1
Kanabec	1	20	0	6	1	10	0	1	0	0
Mille Lacs	14	21	8	18	2	2	3	1	1	0
Morrison	16	32	18	24	2	7	1	3	0	1
Sherburne	14	47	12	46	7	20	1	5	0	0
Stearns	26	78	20	70	7	33	5	15	1	6
Todd	8	24	3	9	0	6	1	0	0	0
Wadena	6	14	4	11	1	2	1	1	0	0
Wright	32	71	17	58	7	28	2	6	0	1

\*\*\* 2015 data are preliminary





**Keep this Statement  
for your records.**

**Center for Transportation Studies  
University of Minnesota  
Professional Development Hours Credit Statement for Registrant Records**

Many licensure and certification agencies require the demonstration of continuing professional competency. To the best of our knowledge, this meeting meets the continuing education requirements for Professional Development Hour (PDH) units. This form is for your use in maintaining a record of the hours that may qualify as PDHs by attending session(s) at this meeting. Complete this form and retain it. **Please do not return it to the Center for Transportation Studies.**

We recommend that you save the Final Program for your records should the licensure or certification agency request information from you. Reporting is done on an honor basis, and members are responsible for maintaining their own records. **Please keep this completed form and the Final Program for your records.**

The table below shows the professional development hours (PDH) that can be earned for the continuing education activities included in the Center for Transportation Studies **East Central Minnesota Toward Zero Deaths Regional Workshop held in St. Cloud, MN on May 16, 2016.**

Sincerely,

Laurie McGinnis  
Director

<b>SESSIONS</b>				
<b>DAY</b>	<b>TIME</b>	<b>TITLE</b>	<b>HOURS AVAILABLE</b>	<b>HOURS EARNED</b>
<b>May 16</b>	8:30 am – 9:15 am	Welcome & Regional Accomplishments	0.75	
	9:15 am – 9:45 am	Critical Crash Management – Auto-Launch and Resource Dispatching	0.50	
	10:00 am – 10:30 am	Regional TZD Crash Facts Overview	0.50	
	10:30 am – 11:00 am	2015: What Happened?	0.50	
	11:00 am – 11:30 am	The MNCrash Record System	0.50	
	11:30 am – 12:00 pm	Personal Impact Statement	0.50	
	12:45 pm – 1:30 pm	What's New?	0.75	
	1:30 pm – 2:15 pm	The Future of Transportation	0.75	
	2:15 pm – 3:00 pm	2016 Action Planning	0.75	
<b>Total PDH Units:</b>			<b>5.50</b>	

Name: \_\_\_\_\_

Date: \_\_\_\_\_

**Proof of Completion**  
**Peace Officer Standards and Training Credit (POST)**  
**Course Number: 10211-0036**

**Name of Program:** East Central Toward Zero Deaths Regional Workshop

**Dates:** May 16, 2016

**Location:** MnDOT Training Center, St. Cloud, MN

This conference has been approved for Minnesota Board of Peace Officer Standards and Training (POST) credit. Anyone interested in obtaining this credit must complete this Post Credit form and **keep it in your records** for proof of completion.

This is to certify that I was in attendance for the sessions indicated below:

\_\_\_ I attended the May 16, 2016 event and will receive 5.0 POST credits for my participation.

---

Name (First) (M.I.) (Last)

---

Affiliation

---

Signature Date

Attendance rosters are no longer submitted to POST; however, sponsors retain the course rosters for their files. Officers are expected to keep certificates or other proof of completion documents for the course they attend. POST is monitoring officer compliance of CE requirements through a random review process.

**KEEP THIS FOR YOUR RECORDS**