

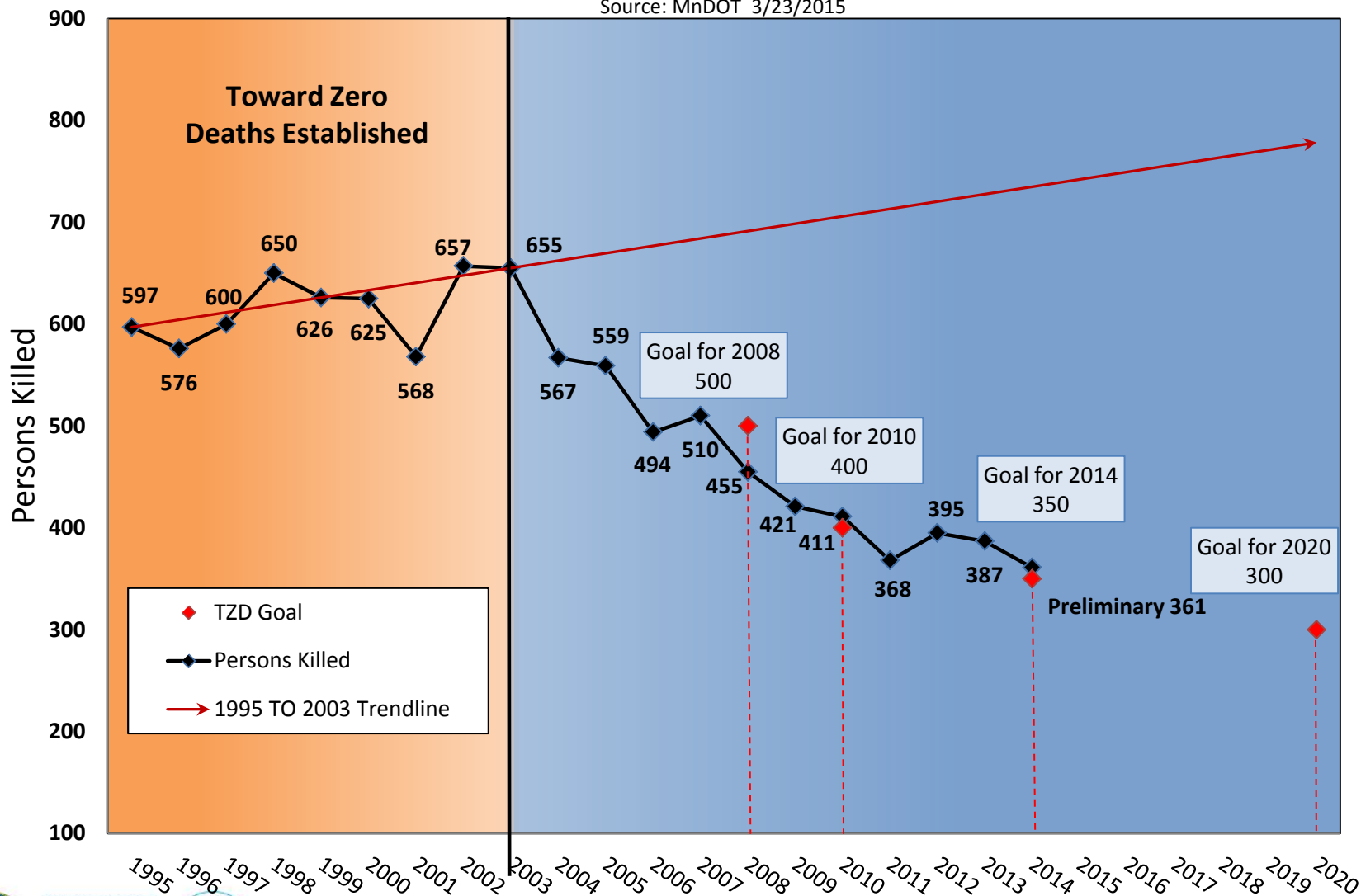
# East Central Minnesota Regional Crash Data

June 2, 2015

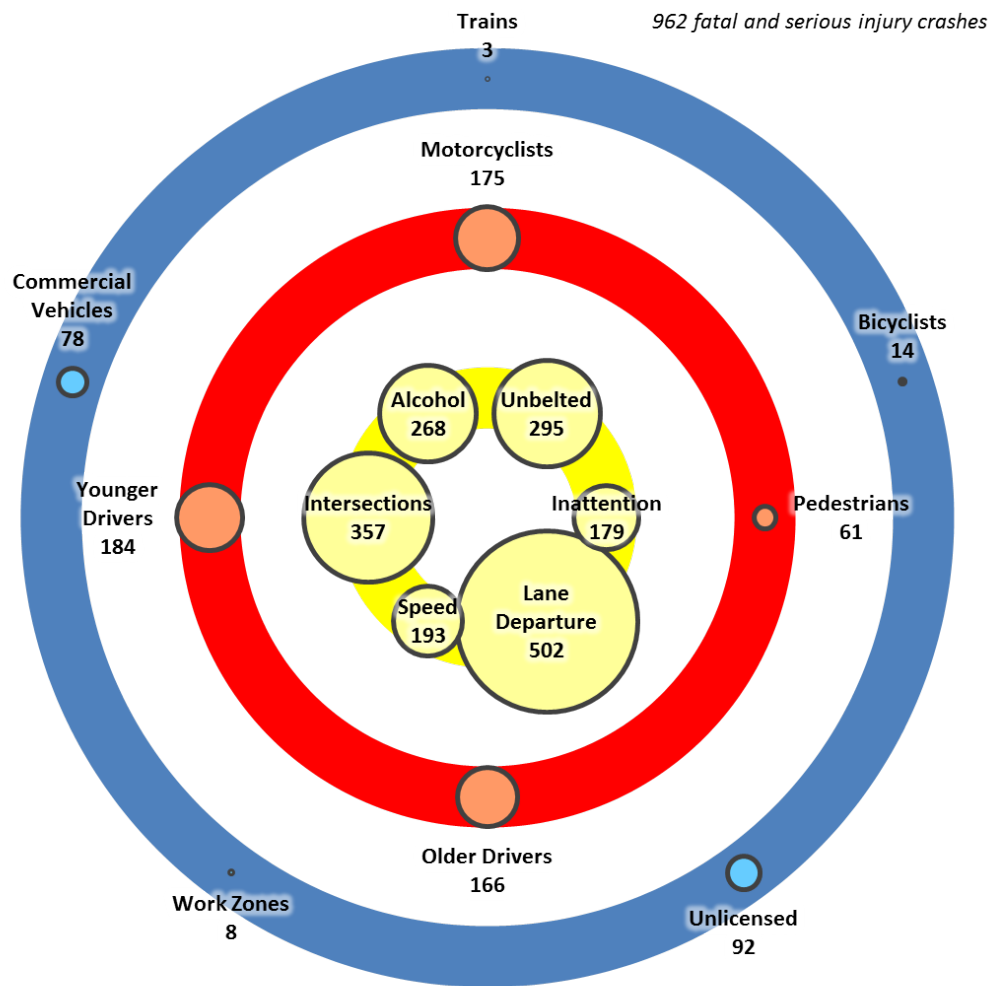


# Minnesota Roadway Fatalities

Source: MnDOT 3/23/2015

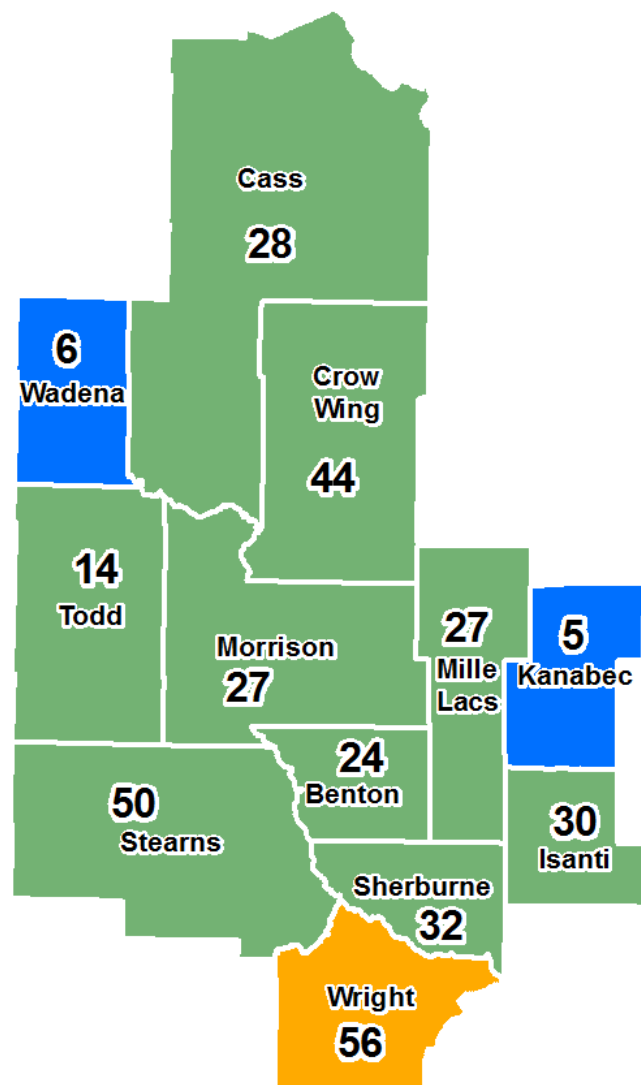


# East Central Region Focus Areas 2010-2014\*



\*2014 data are preliminary

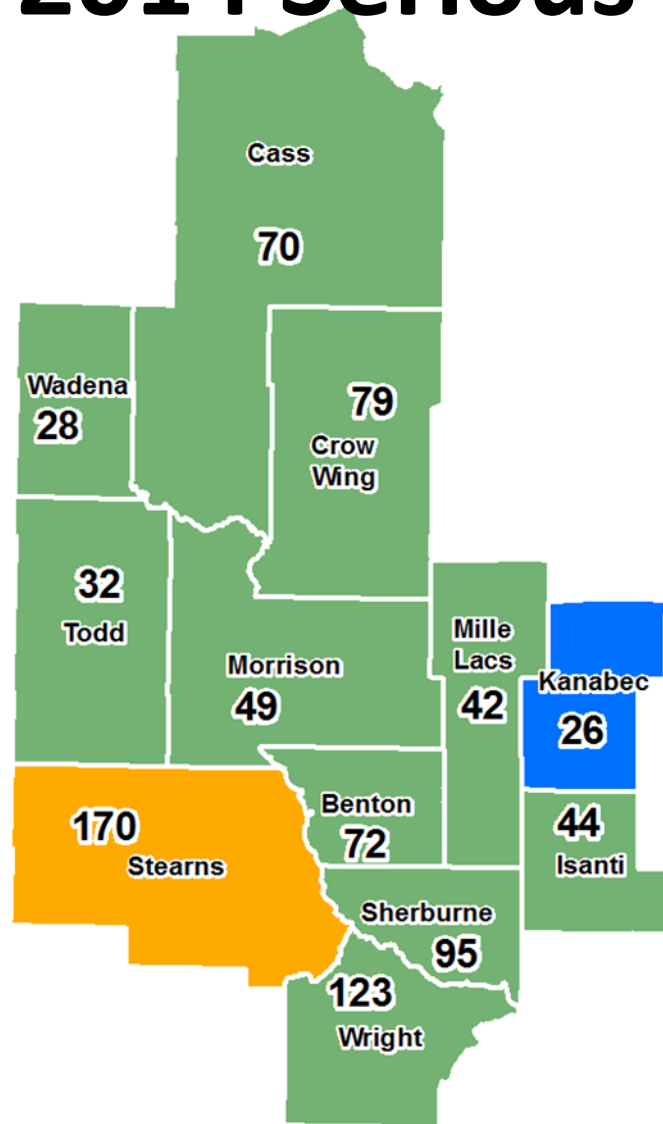
# 2010-2014 Fatalities



Region Totals	
2010	78
2011	58
2012	63
2013	69
2014*	75

\*2014 data are preliminary

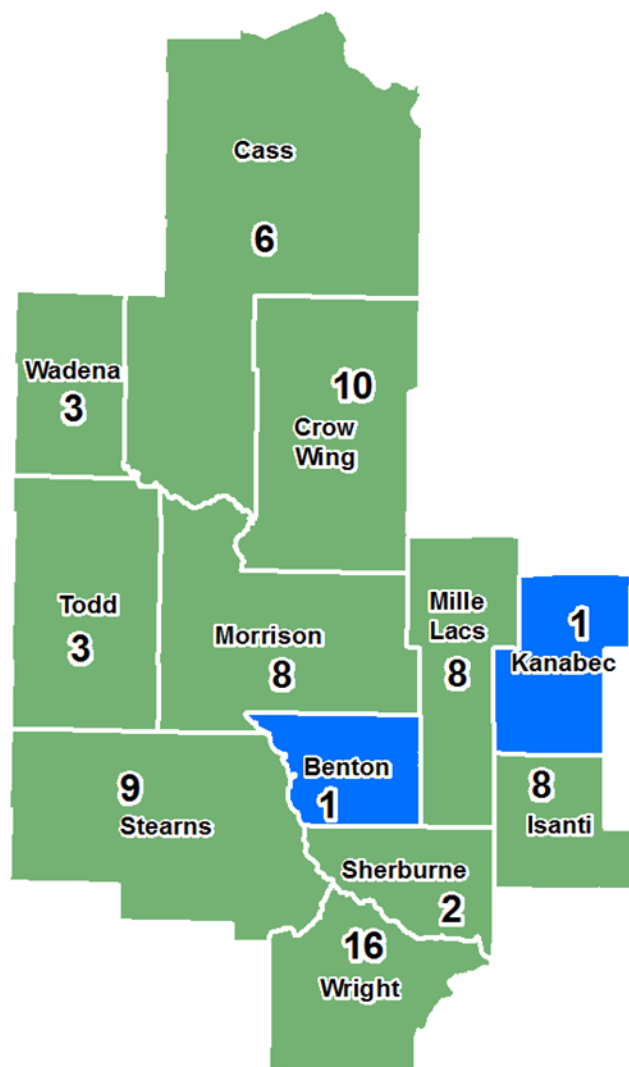
# 2010-2014 Serious Injuries



Region Totals	
2010	159
2011	173
2012	160
2013	187
2014*	151

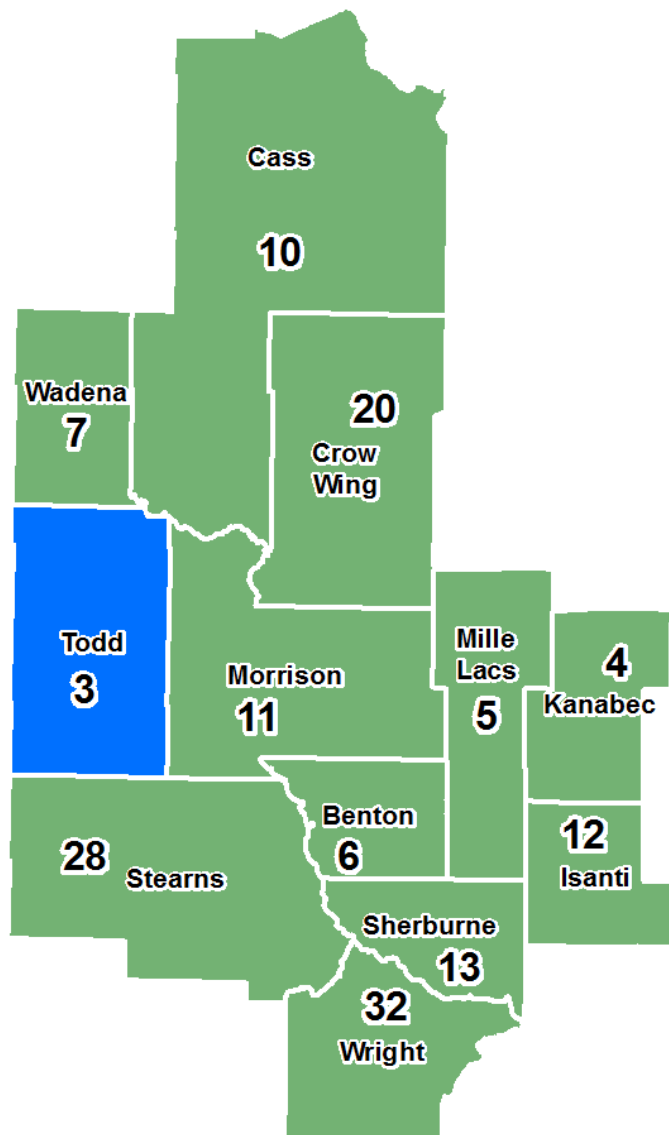
\*2014 data are preliminary

# 2014 Fatalities\*



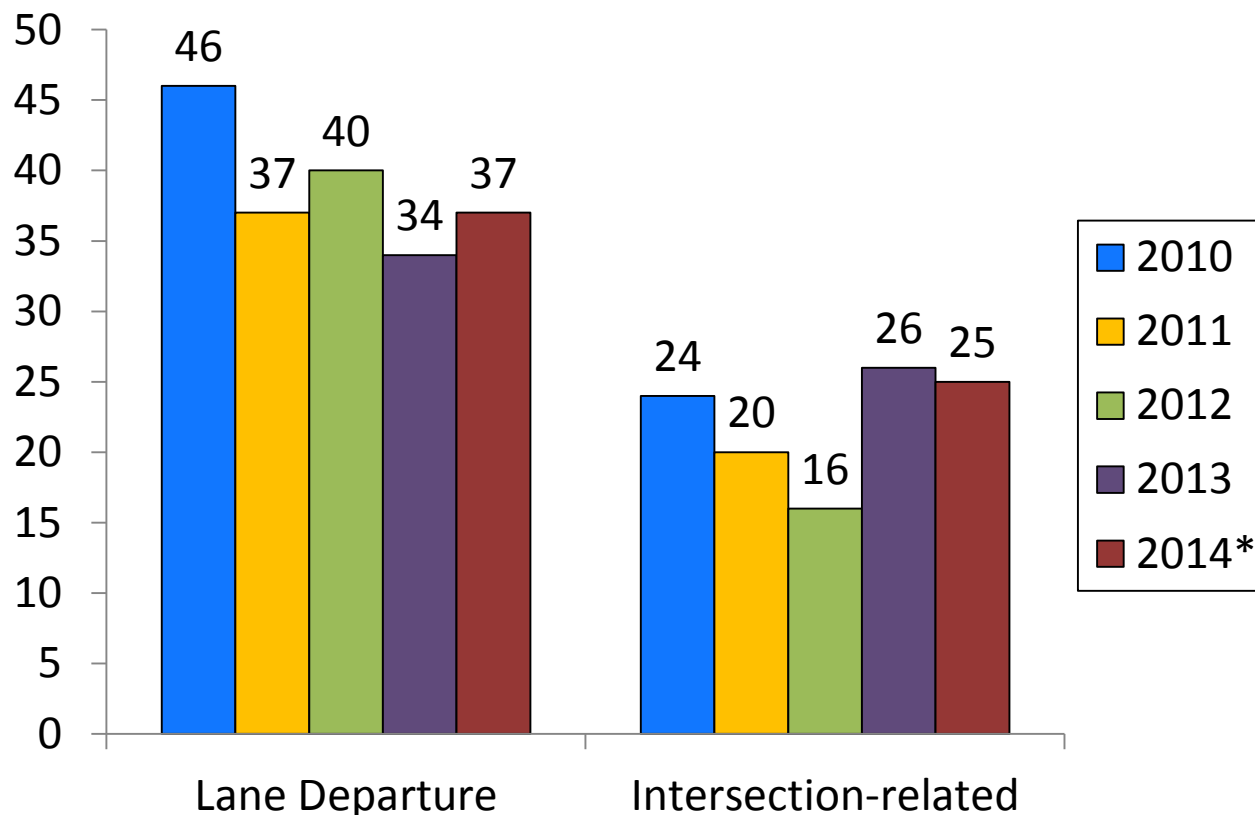
\*2014 data are preliminary

# 2014 Serious Injuries\*



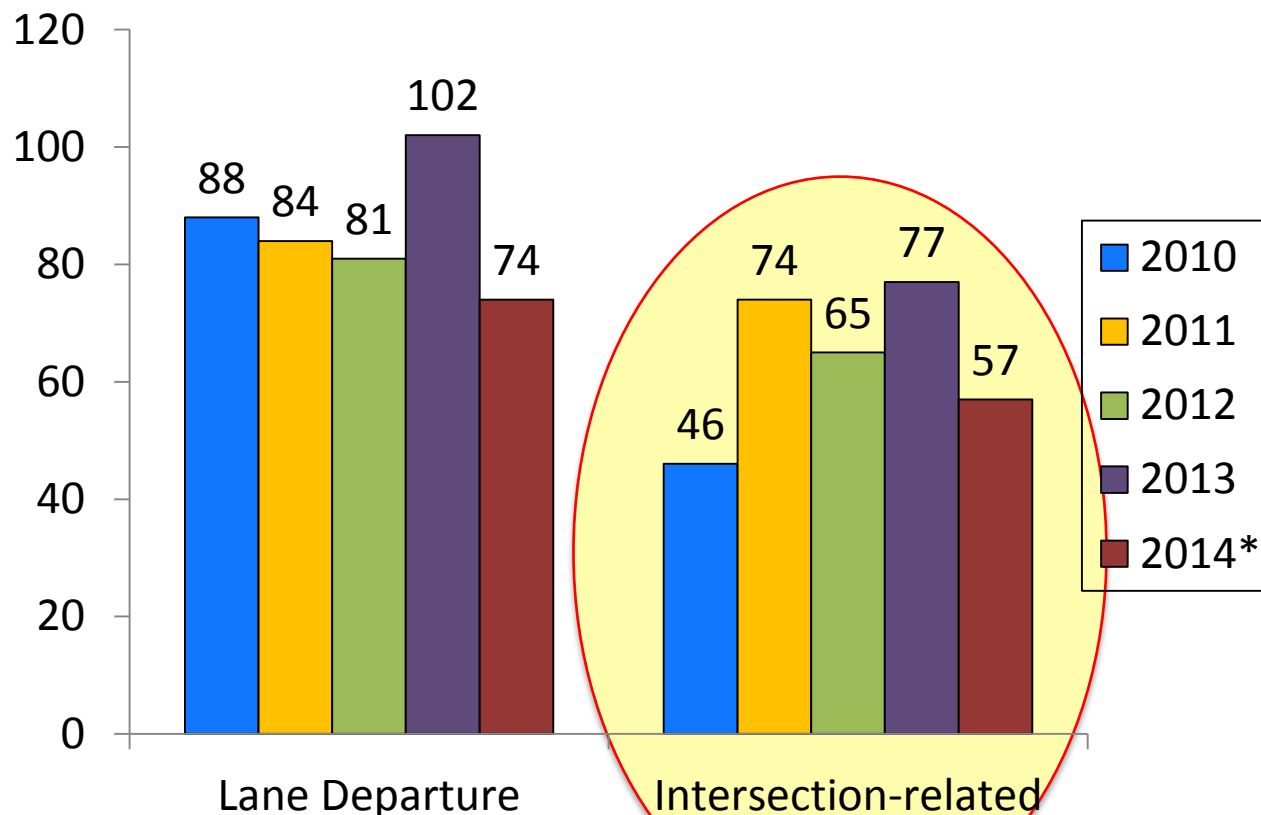
\*2014 data are preliminary

# 5-year Progress in Fatalities





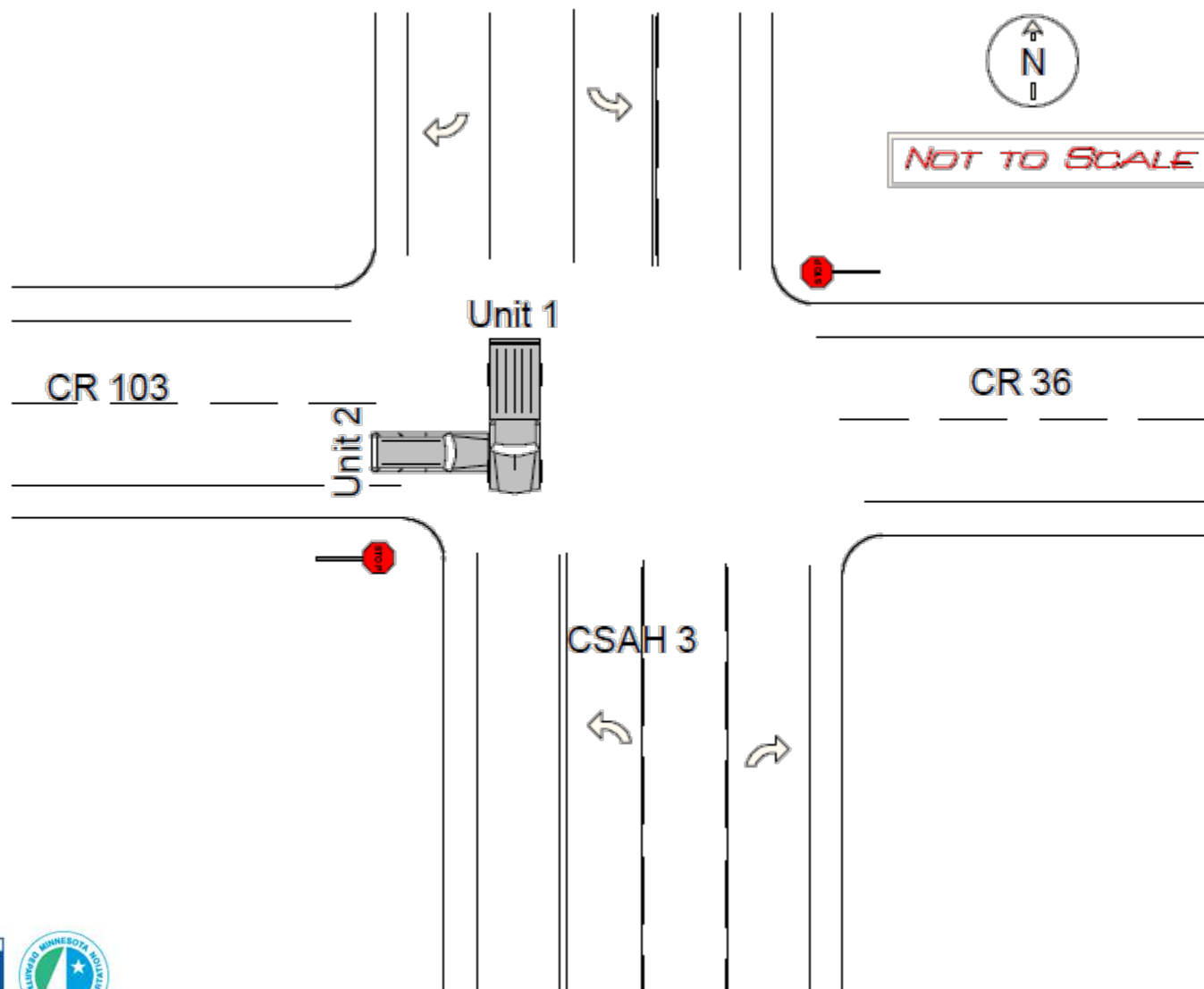
# 5-year Progress in Serious Injuries



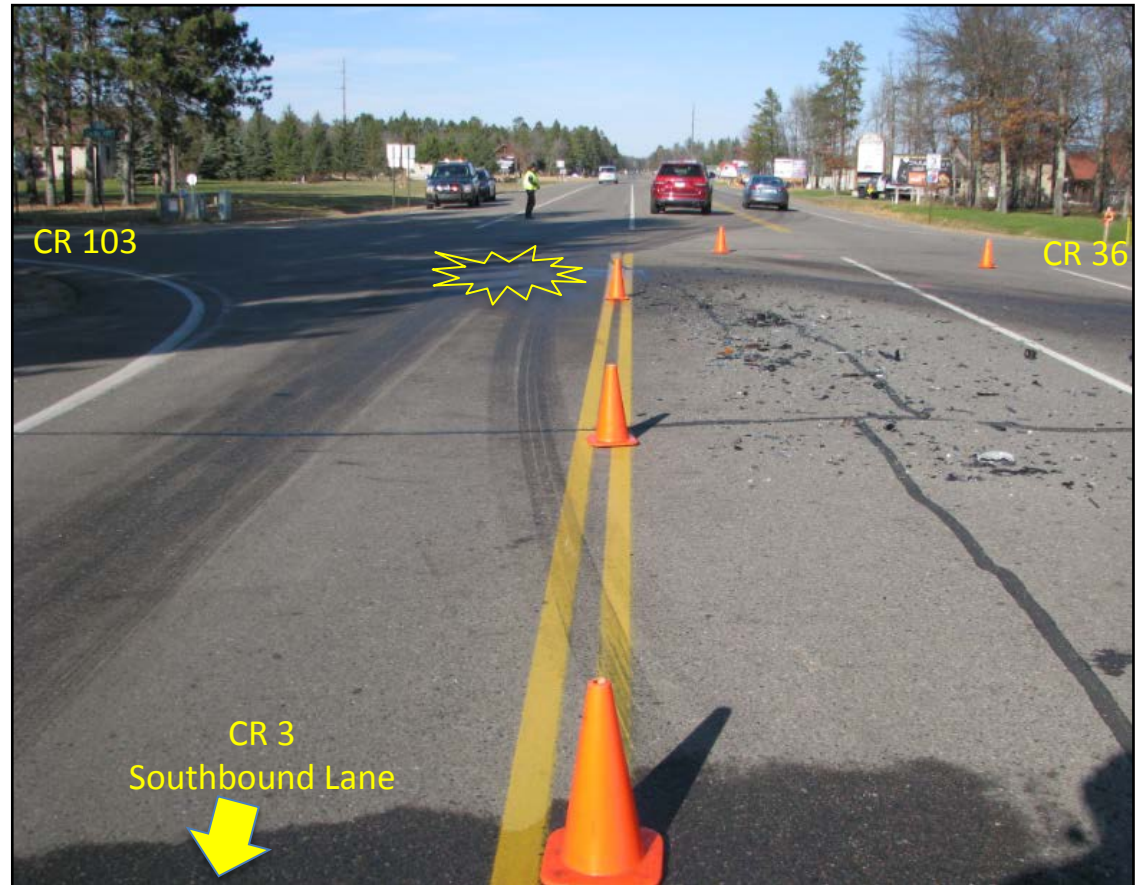
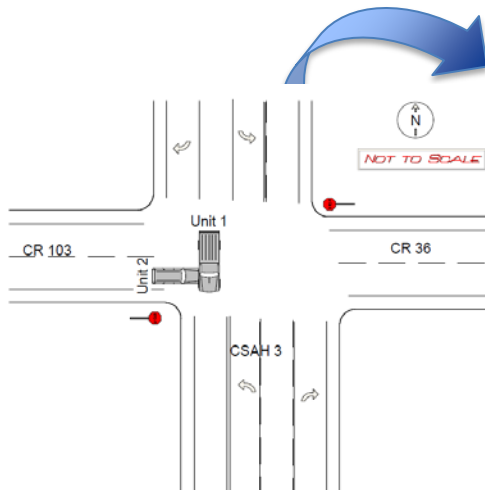
# Case Study – Intersection Related



# Case Study – Intersection Related

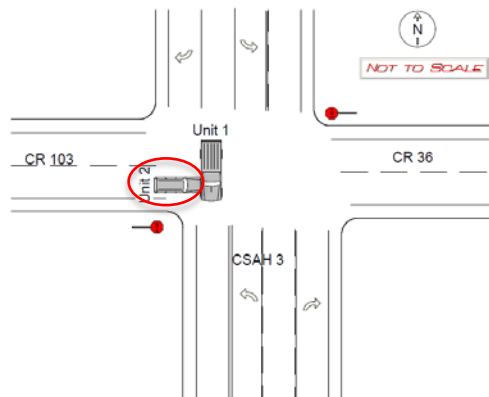


# Case Study – Intersection Related

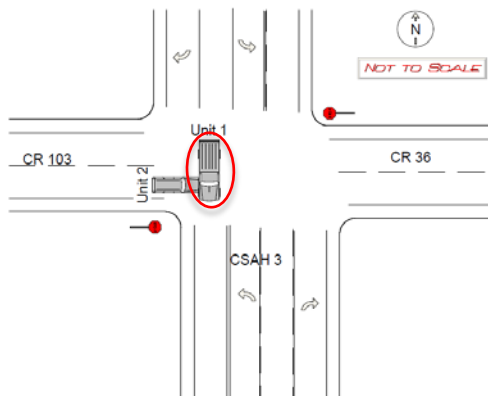




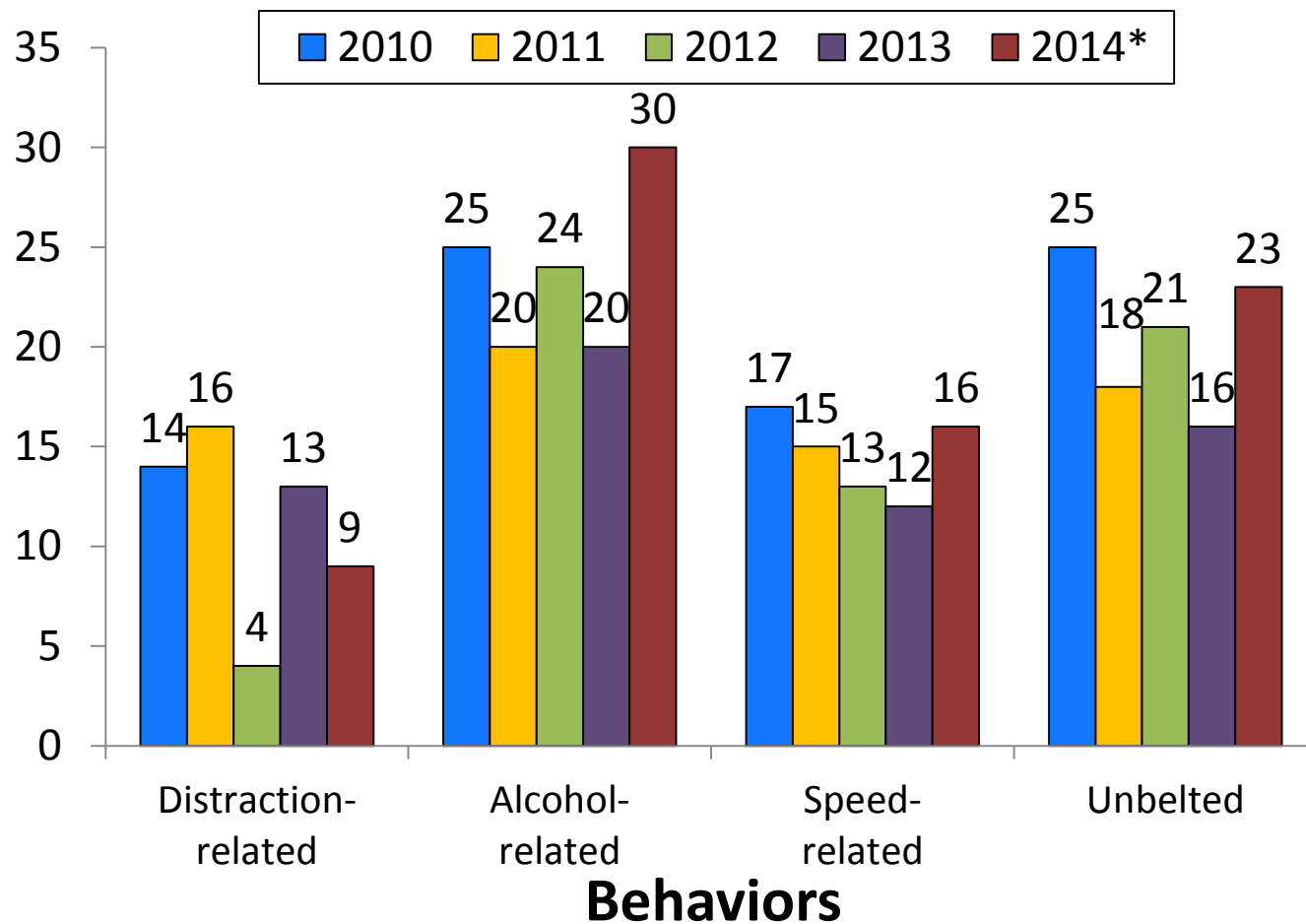
# Case Study – Intersection Related



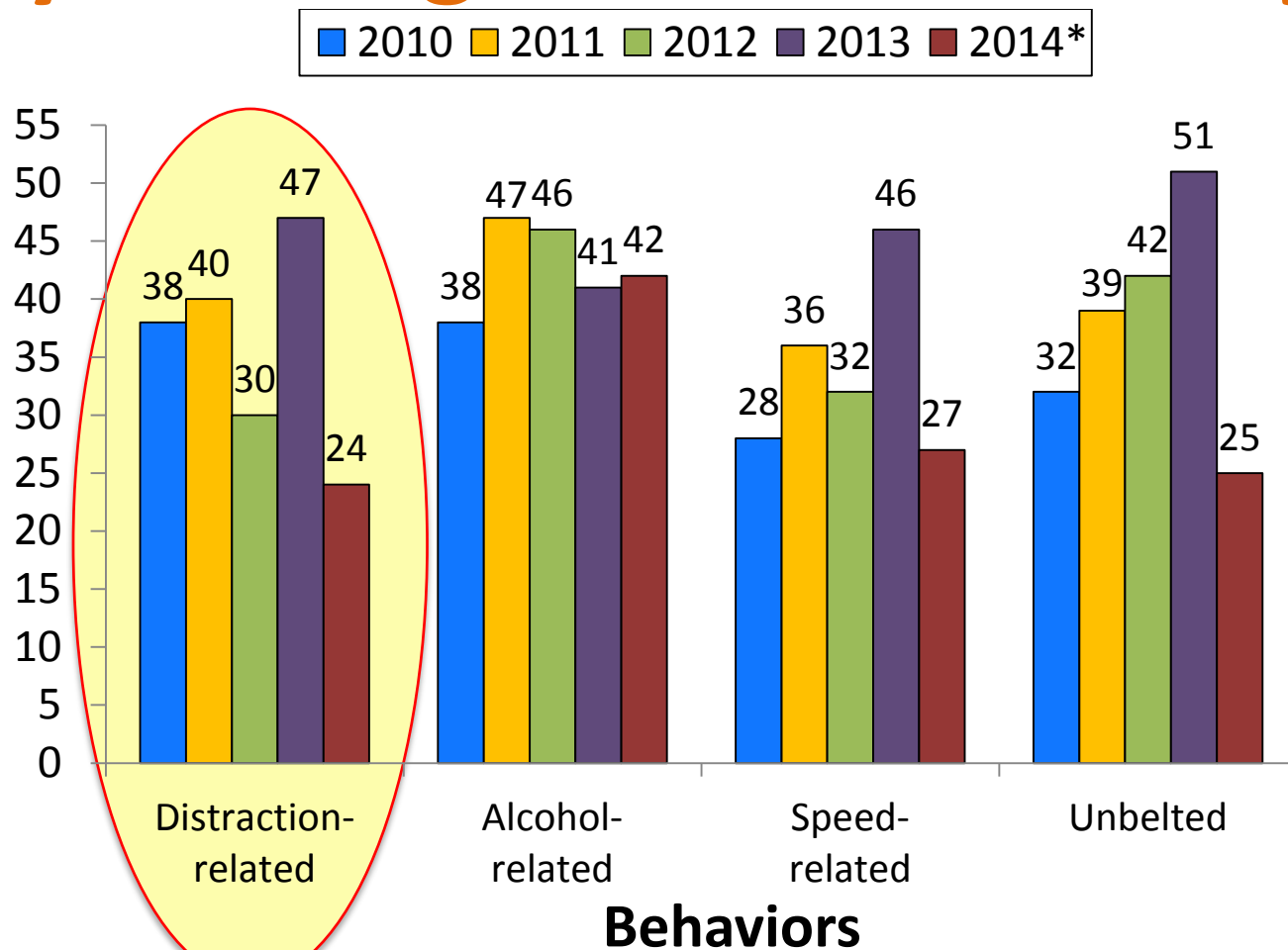
# Case Study – Intersection Related



# 5-year Progress in Fatalities



# 5-year Progress in Serious Injuries





# Case Study – Intersection Related



Additional Information:

- Driver remembers nothing
- Driver is familiar with the area
- Speed at impact:  $\approx 67$  mph

## Pick the Contributing Factors:

- Disregard a Traffic Control Device?
- Fail to Yield Right-of-Way?
- Illegal/Unsafe Speed?
- Driver Inattention/Distraction?

# Key Findings for 2014\*

## East Central Region

- Males ages 20-24 are overrepresented in serious injury and fatal crashes.
- 6.3 fatalities per month
- 12.6 serious injuries per month
- Distracted-related crashes are decreasing.

# Key Findings for 2014\*

## Successes!

- 2 Counties with ONE fatality
- 1 County with THREE serious injuries

## Challenges

- Alcohol, speed and unbelted remain a challenge

# Resources

- **Minnesota Toward Zero Deaths**

- <http://www.MinnesotaTZD.org>

- **Strategic Highway Safety Plan**

- <http://www.dot.state.mn.us/TrafficEng/Safety/SHSP>

- **Minnesota Crash Facts**

- <https://dps.mn.gov/Divisions/OTS>