



MINNESOTA TOWARD ZERO DEATHS

Minnesota TZD Conference

October 29-30, 2015
St. Cloud, Minnesota
www.minnesotatzd.org



SAVED BY A CAR SEAT

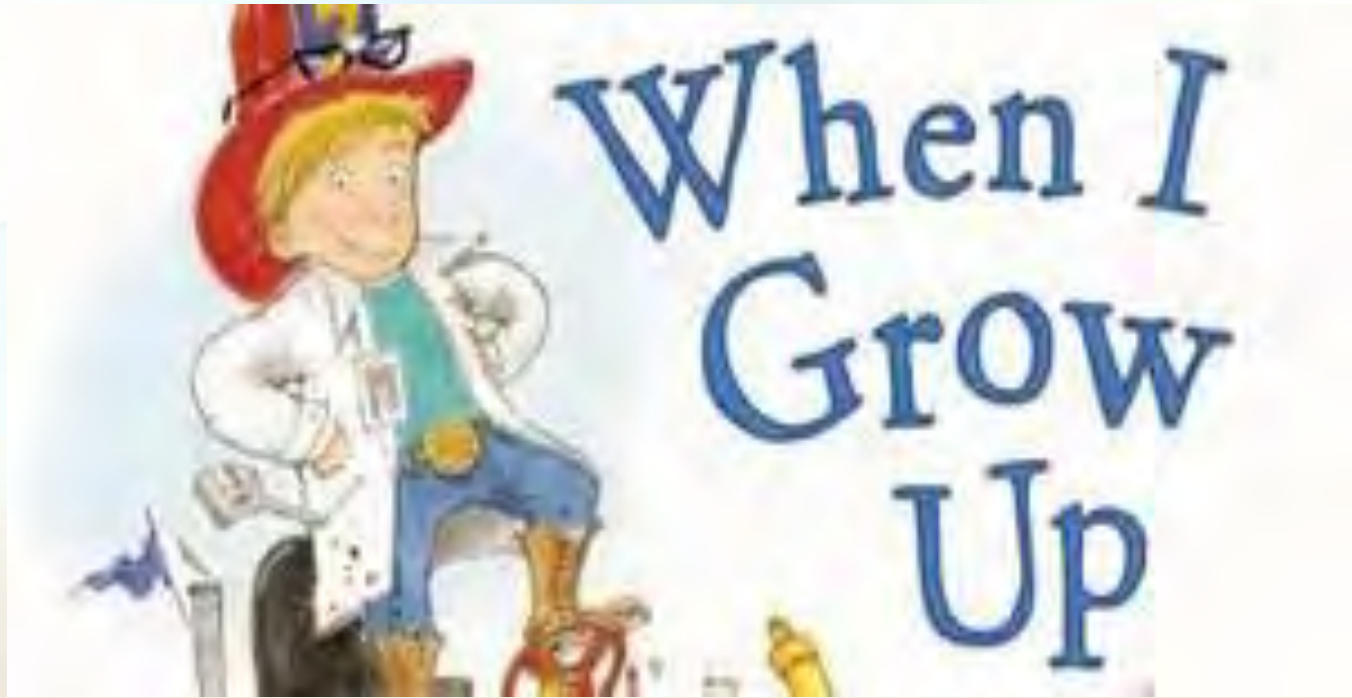


• TZD 2015

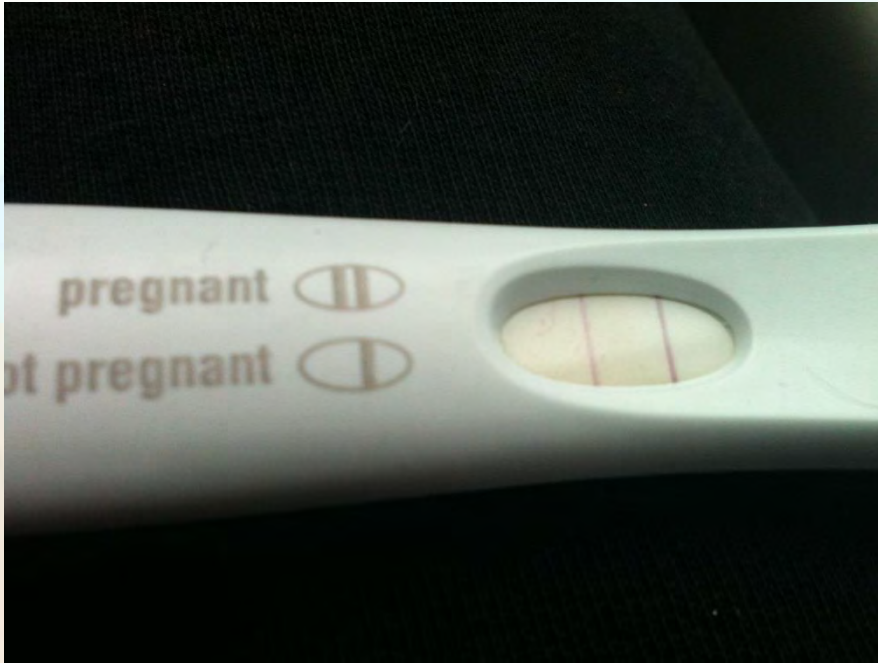
NUMBER ONE KILLER



MOTOR VEHICLE CRASHES







I'm going
to be a big
brother!











***ALL CAR SEATS ARE
NOT THE SAME***



My Kids Aren't Minimums
We Ride To The MAX



Proud Supporter of Extended Rear-Facing
and Extended Harnessing



**CHILD
SAFETY SEAT
CHECK**



DENIAL



MOTOR VEHICLE CRASHES

CANCER

CHILD ABUSE



Candy Warehouse











AT THE SCENE.....

Introduction

- May 23rd 2014- 11:07 am
 - Dispatch received for a truck vs. car-unknown injuries
 - St Croix County Sheriff's Department (Sergeants Jeff Kennett and James Sander and Patrol Deputy Koenig), 3 ALS Ambulances and a quick response medic from Baldwin, United Fire and Rescue (3 Stations), Baldwin Police and the Wisconsin State Patrol were dispatched.

Location of the Scene



Updated Dispatch Information

- Additional 911 calls received
 - Updated call received to 911: Truck with a cattle trailer vs. vehicle - one entrapped
 - 11:13am- 3 patients identified including; a head injury, an 8 month old “sleeping” and a small boy with a cut.
- Life Link III requested - ETA un-determined.
Helicopter launching from Rice Lake, WI
- 1st deputy arrived in the area at 11:12 am
- 5 minutes later 1st ambulance arrived

Truck with Cattle Hauler



Victim Vehicle



Scene Updates

- Fire and Rescue first engine arrived at 11:16 am and began extrication of Bethany and her son.
- Sgt. Kennett locates Emma Jean, a 1 year old child out of the vehicle. She has been removed by a passerby from her vehicle in her car seat.

Extrication Continues



The Scene



The Scene



Cattle Hauler and Truck



The Scene - Truck



The Scene



The Scene



Emma Jean's Initial Assessment

- After being found out of the vehicle, Sgt. Kennett maintained her airway due to obvious trouble breathing, and then carried her to the 1st arriving ambulance (Critical Care 5603) in her damaged car seat.

Findings and Quick Action

- Abrasions noted on the right side of her head and shoulders.
- Unresponsive - however, does occasionally open her eyes.
- Irregular breathing, with grunting noted.
- Lung sounds equal- skin is cyanotic (pale/blue).

Findings and Action

- Pupils are both sluggish, EKG shows a heart rate in the 150s-170s. 2nd critical care medic arrived to assist.
- Car seat is in unacceptable condition - subsequently a rapid decision was made to place her on a pediatric long board.

More Findings and Actions

- Decerebrate posturing noted in both hands.
- Intraosseous access obtained in her right leg. RSI medications administered with a desired effect.
- Intubation successful with a 4.0 uncuffed ET tube.

Transport Decision

- Helicopter cancelled.
- Transport to Regions Hospital, with the continued care of Critical Care Paramedics Posner and Wittmer, and Sgt. Kennett.
- Patient meets Peds TTA Criteria, team activated with at least a 20 min. notice.

Transport

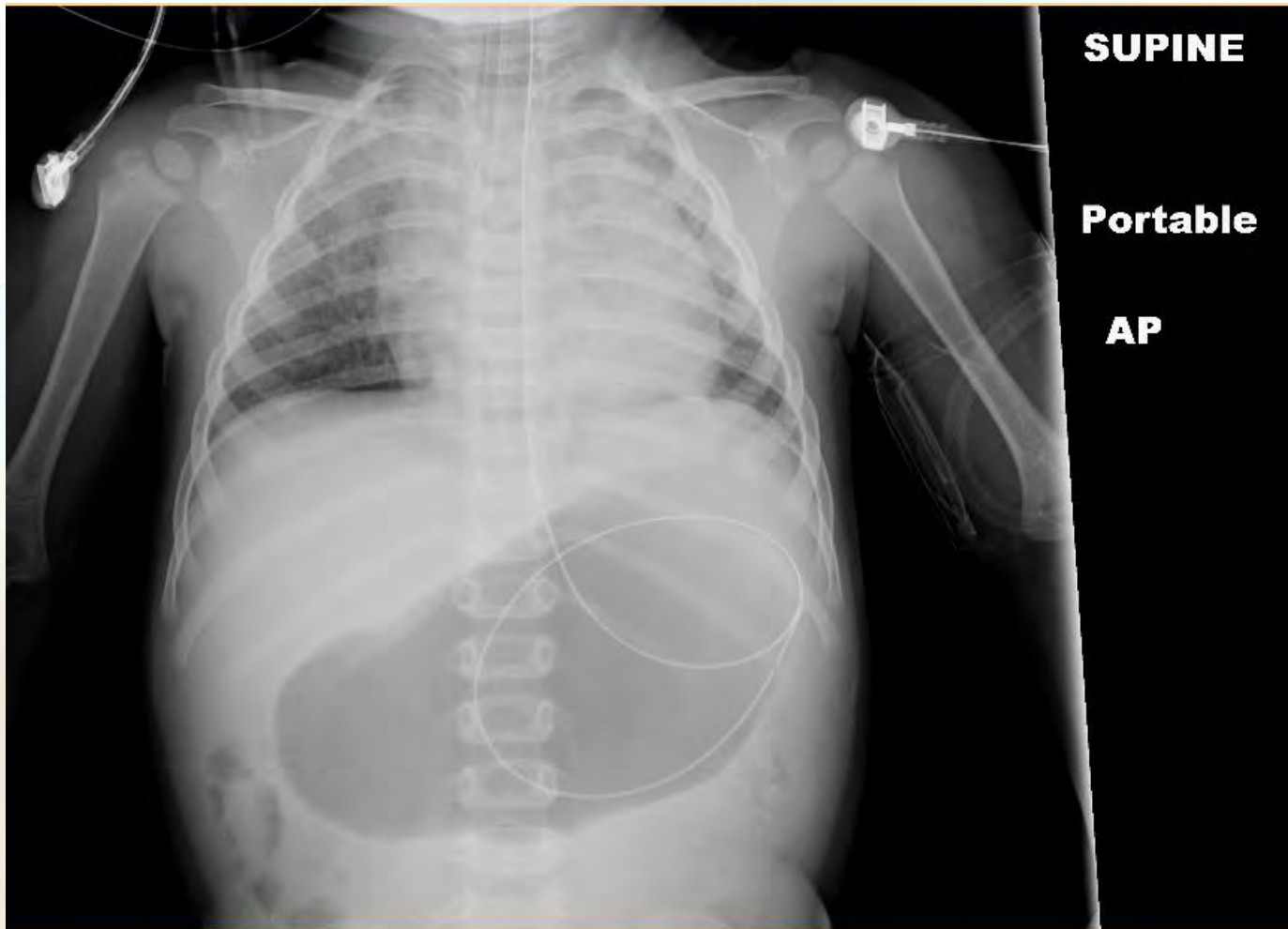
- Total transport time - 40 Minutes.
- Time from 911 call to Regions ED - 65 minutes.
- Patient remained chemically paralyzed with no significant changes in vital signs (BVM used - no vent available).

Summary

- Time was critical- road conditions were good, Law Enforcement and EMS were in the area prior to the call.
- Quick recognition and interventions.
- Followed the WI Trauma Guidelines and transported directly to a Level I Pediatric Trauma Center.

At the Hospital.....

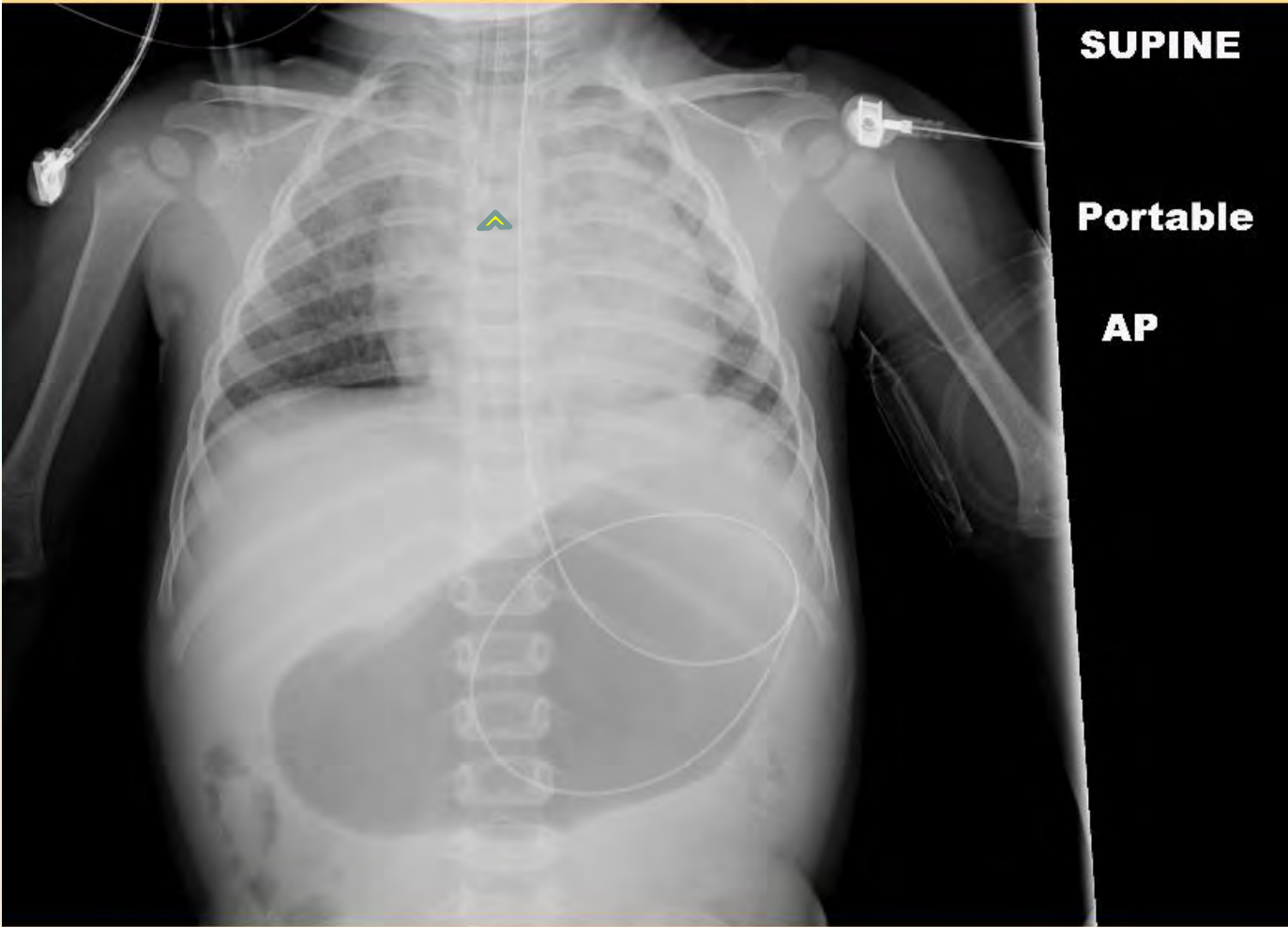




SUPINE

Portable

AP



SUPINE

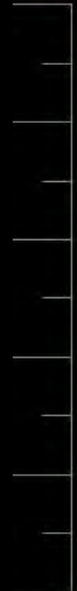
Portable

AP

A



10 cm



A

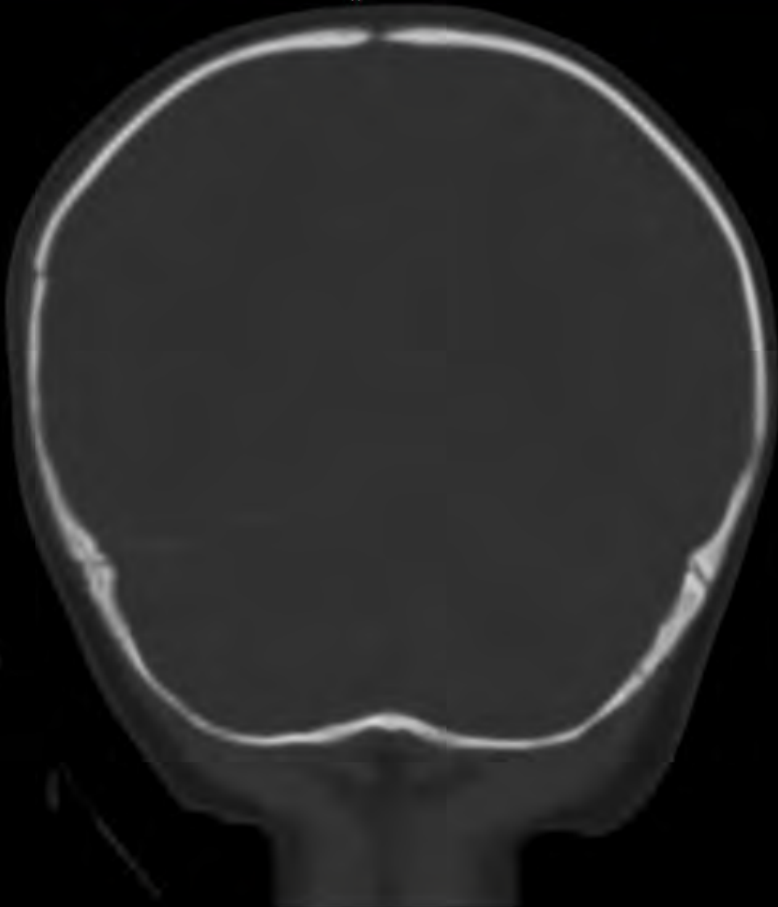


10 cm



FOV: 169
512x512
WW: 90 WL: 40

H



10 cm

FOV: 169

512x512

WW: 2,000 WL: 650





Hospital Course

- Admitted to PICU
- Repeat head CT showed progression of injury
- EVD inserted hospital day 2
- Started to develop seizures on day 5 with elevated ICP, ultimately required pentobarbital

Hospital Course

- Seizures fully controlled after 3 days
- Improving, weaned from vent at 2 weeks
- Transferred to Rehab after 26 days



Closing comments.....



ONE YEAR DIFFERENCE






Regions Hospital
 HealthPartners

2015 Car Seat Clinics

Regions Hospital is offering child and booster seat safety clinics. Certified car seat technicians from Regions Hospital will teach you how to install and use child car restraints correctly. There is no charge for this clinic.

Regions Hospital South Ramp from 4 p.m. – 7 p.m.:

January 8	July 9
February 12	August 6
April 9	September 10
May 7	October 8
June 11	December 10

Fire Department locations from 4 p.m. – 7 p.m.:

January 20 - Cottage Grove Fire	June 23 - Vadnais Heights Fire
February 24 - Maplewood Fire	July 21 - St Paul Fire
March 12 - St Paul Fire	August 18 - White Bear Lake Fire
March 24 - Hastings Fire	September 22 - Stillwater Fire
April 21 - Forest Lake Fire	October 22 - Cottage Grove Fire
April 23 - Bloomington Fire	November 5 - St Paul Fire
May 19 - Mahtomedi Fire	November 19 - Oakdale Fire


 The car seat program is a gift from HealthPartners employees.

To make an appointment, call Regions Child Passenger Safety at 651-357-2798 or e-mail carseatinfo@healthpartners.com.



THANK YOU!

